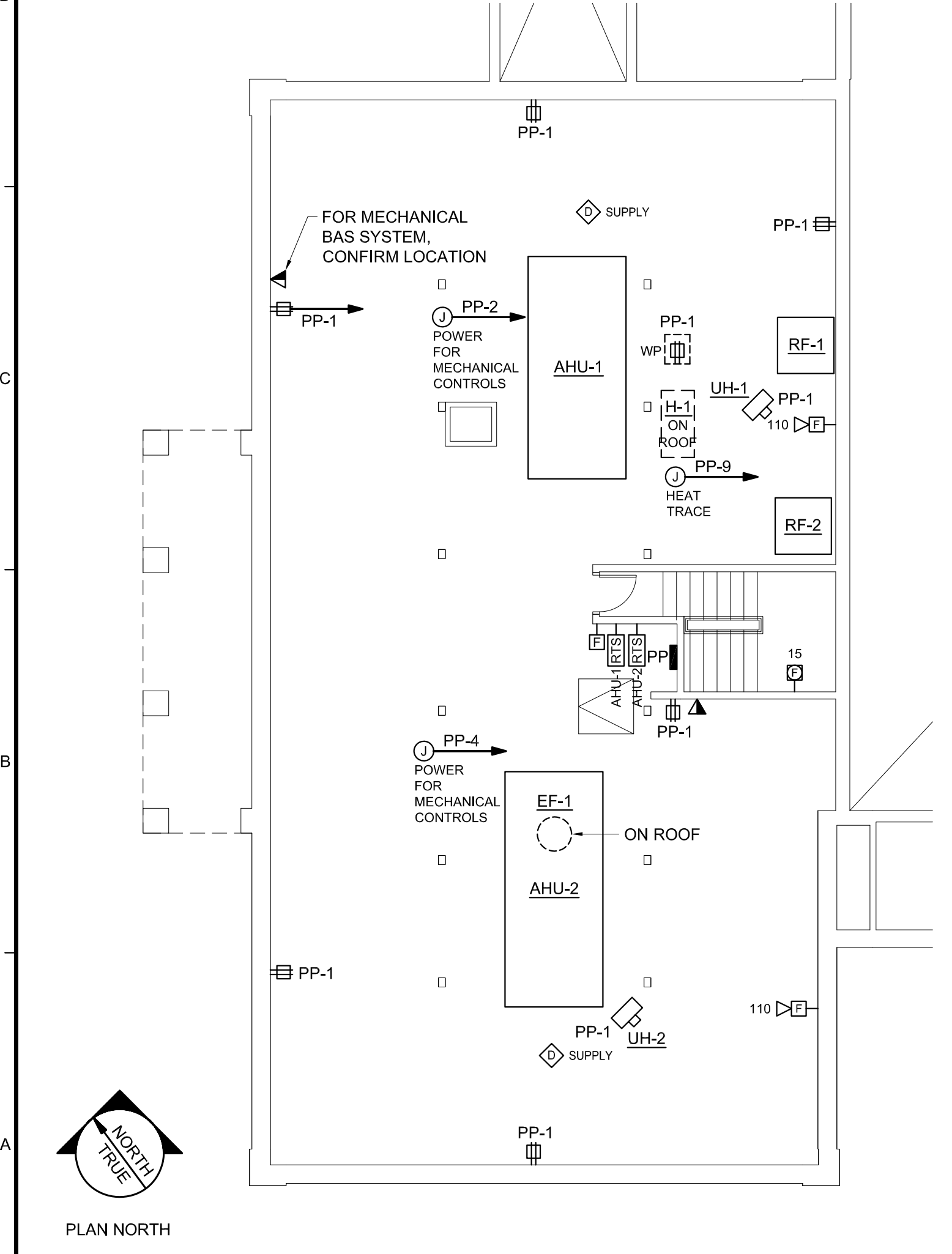
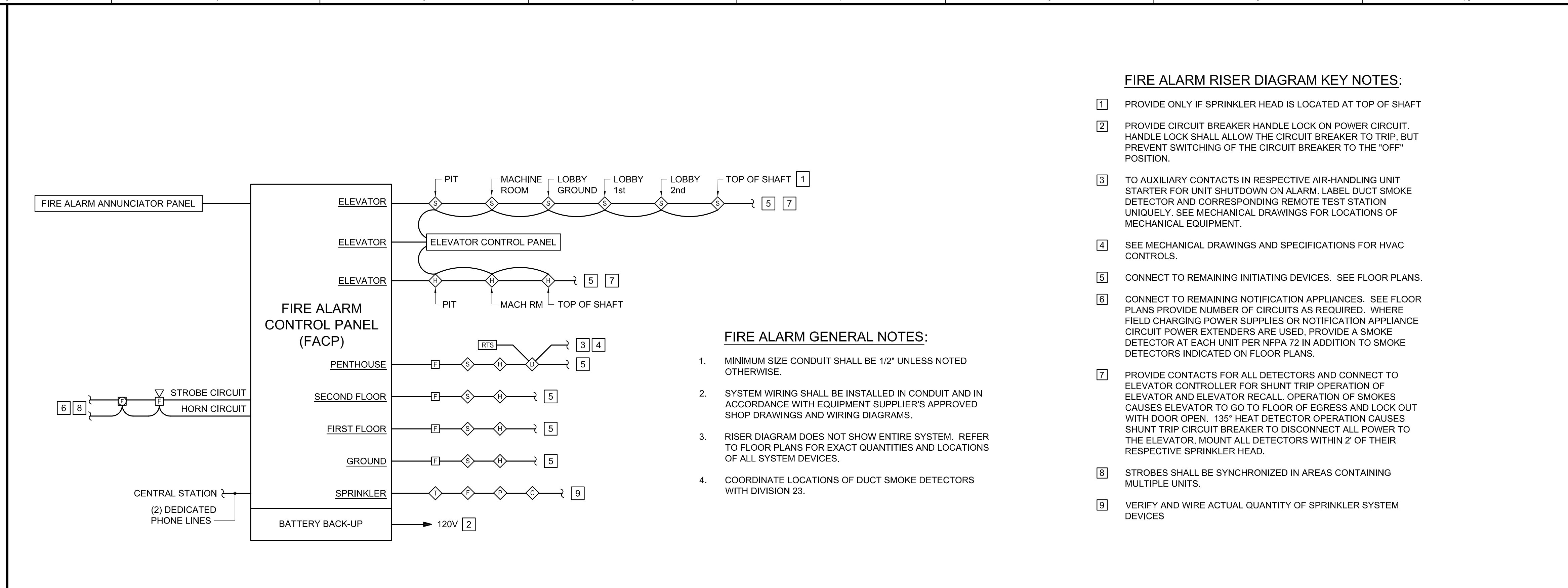


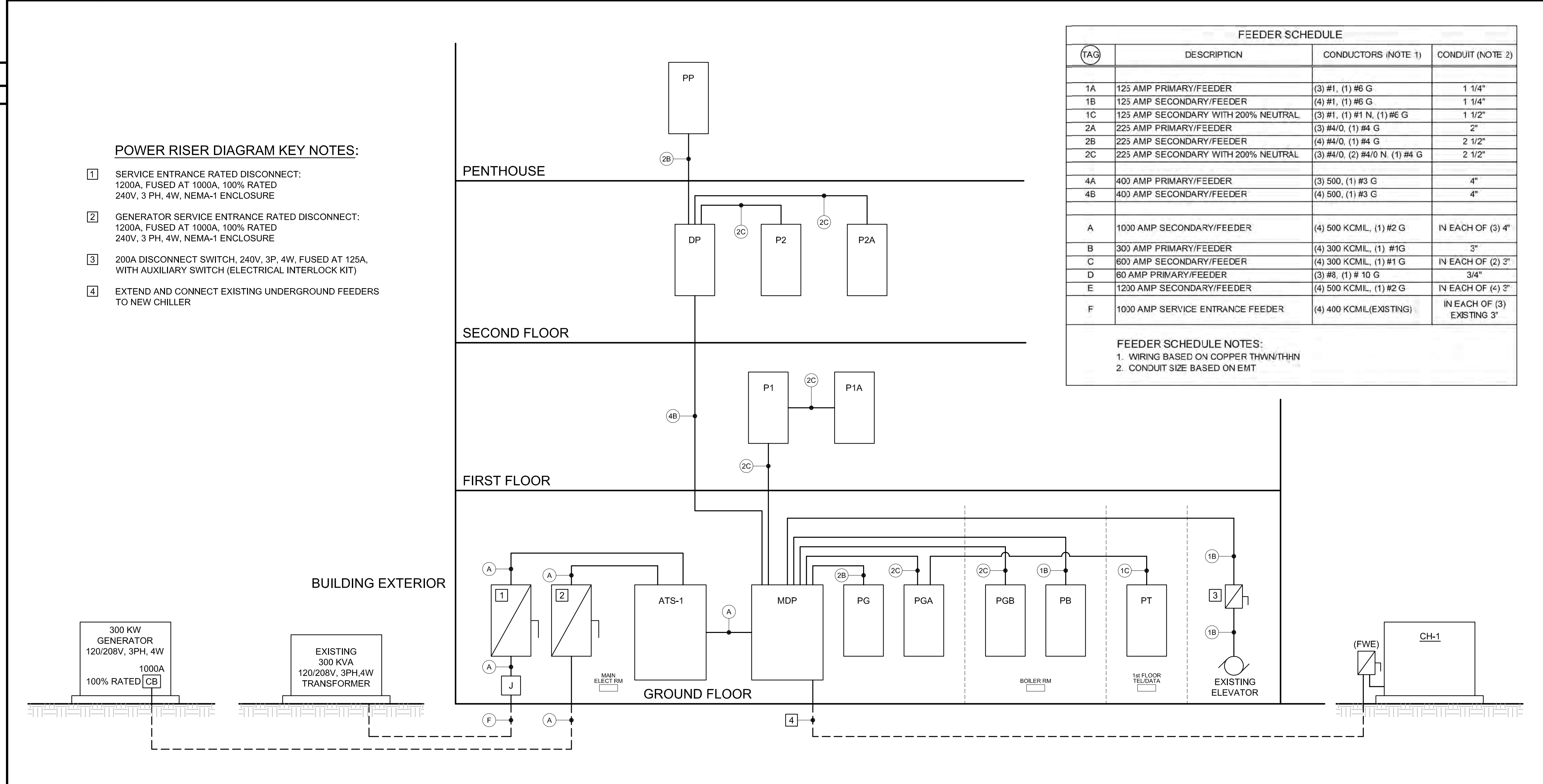
D1 LIGHTING PLAN ~ PENTHOUSE
1/8" = 1'-0"



A1 POWER AND SYSTEMS PLAN ~ PENTHOUSE
1/8" = 1'-0"



E3 FIRE ALARM RISER DIAGRAM
NO SCALE



A3 POWER RISER DIAGRAM
NO SCALE

FIRE ALARM RISER DIAGRAM KEY NOTES:

- 1 PROVIDE ONLY IF SPRINKLER HEAD IS LOCATED AT TOP OF SHAFT
- 2 PROVIDE CIRCUIT BREAKER HANDLE LOCK ON POWER CIRCUIT. HANDLE LOCK SHALL ALLOW THE CIRCUIT BREAKER TO TRIP, BUT PREVENT SWITCHING OF THE CIRCUIT BREAKER TO THE "OFF" POSITION.
- 3 TO AUXILIARY CONTACTS IN RESPECTIVE AIR-HANDLING UNIT STARTER FOR UNIT SHUTDOWN ON ALARM. LABEL DUCT SMOKE DETECTOR AND CORRESPONDING REMOTE TEST STATION UNIQUELY. SEE MECHANICAL DRAWINGS FOR LOCATIONS OF MECHANICAL EQUIPMENT.
- 4 SEE MECHANICAL DRAWINGS AND SPECIFICATIONS FOR HVAC CONTROLS.
- 5 CONNECT TO REMAINING INITIATING DEVICES. SEE FLOOR PLANS.
- 6 CONNECT TO REMAINING NOTIFICATION APPLIANCES. SEE FLOOR PLANS PROVIDE NUMBER OF CIRCUITS AS REQUIRED. WHERE FIELD CHARGING POWER SUPPLIES OR NOTIFICATION APPLIANCE CIRCUIT POWER EXTENDERS ARE USED, PROVIDE A SMOKE DETECTOR AT EACH UNIT PER NFPA 72 IN ADDITION TO SMOKE DETECTORS INDICATED ON FLOOR PLANS.
- 7 PROVIDE CONTACTS FOR ALL DETECTORS AND CONNECT TO ELEVATOR CONTROLLER FOR SHUNT TRIP OPERATION OF ELEVATOR AND ELEVATOR RECALL. OPERATION OF SMOKE CAUSES ELEVATOR TO GO TO FLOOR OF EGRESS AND LOCK OUT WITH DOOR OPEN. 135° HEAT DETECTOR OPERATION CAUSES SHUNT TRIP CIRCUIT BREAKER TO DISCONNECT ALL POWER TO THE ELEVATOR. MOUNT ALL DETECTORS WITHIN 2' OF THEIR RESPECTIVE SPRINKLER HEAD.
- 8 STROBES SHALL BE SYNCHRONIZED IN AREAS CONTAINING MULTIPLE UNITS.
- 9 VERIFY AND WIRE ACTUAL QUANTITY OF SPRINKLER SYSTEM DEVICES

FIRE ALARM GENERAL NOTES:

1. MINIMUM SIZE CONDUIT SHALL BE 1/2" UNLESS NOTED OTHERWISE.
2. SYSTEM WIRING SHALL BE INSTALLED IN CONDUIT AND IN ACCORDANCE WITH EQUIPMENT SUPPLIER'S APPROVED SHOP DRAWINGS AND WIRING DIAGRAMS.
3. RISER DIAGRAM DOES NOT SHOW ENTIRE SYSTEM. REFER TO FLOOR PLANS FOR EXACT QUANTITIES AND LOCATIONS OF ALL SYSTEM DEVICES.
4. COORDINATE LOCATIONS OF DUCT SMOKE DETECTORS WITH DIVISION 23.

FEEDER SCHEDULE			
(TAG)	DESCRIPTION	CONDUCTORS (NOTE 1)	CONDUIT (NOTE 2)
1A	125 AMP PRIMARY/FEEDER	(3) #1, (1) #6 G	1 1/4"
1B	125 AMP SECONDARY/FEEDER	(4) #1, (1) #6 G	1 1/4"
1C	125 AMP SECONDARY WITH 200% NEUTRAL	(3) #1, (1) #1 N, (1) #6 G	1 1/2"
2A	225 AMP PRIMARY/FEEDER	(3) #4/0, (1) #4 G	2"
2B	225 AMP SECONDARY/FEEDER	(4) #4/0, (1) #4 G	2 1/2"
2C	225 AMP SECONDARY WITH 200% NEUTRAL	(3) #4/0, (2) #4/0 N, (1) #4 G	2 1/2"
4A	400 AMP PRIMARY/FEEDER	(3) 500, (1) #3 G	4"
4B	400 AMP SECONDARY/FEEDER	(4) 500, (1) #3 G	4"
A	1000 AMP SECONDARY/FEEDER	(4) 500 KCML, (1) #2 G	IN EACH OF (3) 4"
B	300 AMP PRIMARY/FEEDER	(4) 300 KCML, (1) #1 G	3"
C	600 AMP SECONDARY/FEEDER	(4) 300 KCML, (1) #1 G	IN EACH OF (2) 3"
D	60 AMP PRIMARY/FEEDER	(3) #8, (1) # 10 G	3/4"
E	1200 AMP SECONDARY/FEEDER	(4) 500 KCML, (1) #2 G	IN EACH OF (4) 3"
F	1000 AMP SERVICE ENTRANCE FEEDER	(4) 400 KCML (EXISTING)	IN EACH OF (3) EXISTING 3"

FEEDER SCHEDULE NOTES:
1. WIRING BASED ON COPPER THWN/THHN
2. CONDUIT SIZE BASED ON EMT

POWER RISER DIAGRAM KEY NOTES:

- 1 SERVICE ENTRANCE RATED DISCONNECT: 1200A, FUSED AT 1000A, 100% RATED 240V, 3 PH, 4W, NEMA-1 ENCLOSURE
- 2 GENERATOR SERVICE ENTRANCE RATED DISCONNECT: 1200A, FUSED AT 1000A, 100% RATED 240V, 3 PH, 4W, NEMA-1 ENCLOSURE
- 3 200A DISCONNECT SWITCH, 240V, 3P, 4W, FUSED AT 125A, WITH AUXILIARY SWITCH (ELECTRICAL INTERLOCK KIT)
- 4 EXTEND AND CONNECT EXISTING UNDERGROUND FEEDERS TO NEW CHILLER

C:\Users\blambert\AppData\Local\Temp\Temp_P_Permit_Sch_Dwg.dwg 11022E.dwg Sep 19, 2011 - 8:41am