

- 1 8" HIGH, 3/4" AC PLYWOOD BACKBOARD ALL AROUND ON 3 1/2" STANDOFFS - PAINT BOTH SIDES WITH (2) COATS OF BLACK FIRE RETARDANT PAINT
- 2 EXISTING TEMPORARY POWER AND LIGHTING SHALL REMAIN. WIRE AND CONNECT TO NEW PANELS.
- 3 PROVIDE CONDUIT, BOXES AND WIRING TO PANEL INDICATED FOR FUTURE LIGHTING AND DEVICES INDICATED. DEVICES AND LIGHTING SHALL BE INSTALLED AS PART OF THE FUTURE TENANT FIT-UP PROJECT.
- 4 (4) 4" SLEEVES FOR FUTURE TEL/DATA CABLING. MOUNT HORIZONTALLY AS HIGH TO STRUCTURE AS POSSIBLE.
- 5 PROVIDE JUNCTION BOX AND CIRCUIT FOR MECHANICAL CONTROLS

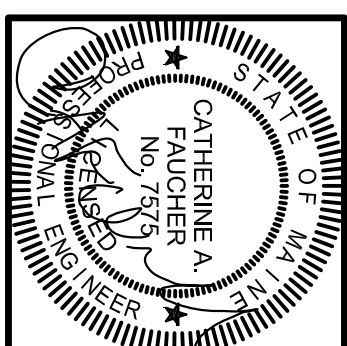
G9	KEY NOTES
----	-----------

PDT
ARCHITECTS
 49 DARTMOUTH STREET
 PORTLAND, MAINE 04101
 207-775-1059
 www.pdtarch.com

Allied Engineering
 Structural Mechanical
 Electrical Commissioning
 160 Veranda Street
 Portland, Maine 04103
 T: 207.221.2268
 F: 207.221.2266
 Web: www.allied-eng.com

allied Project No: 11-022
 CAD File: 11022E

MARTIN'S POINT - BUILDING 4
SHELL AND CORE RETROFIT
 PORTLAND, MAINE



PDT JOB NO. _____

DRWN. CHK. DLL/CAF

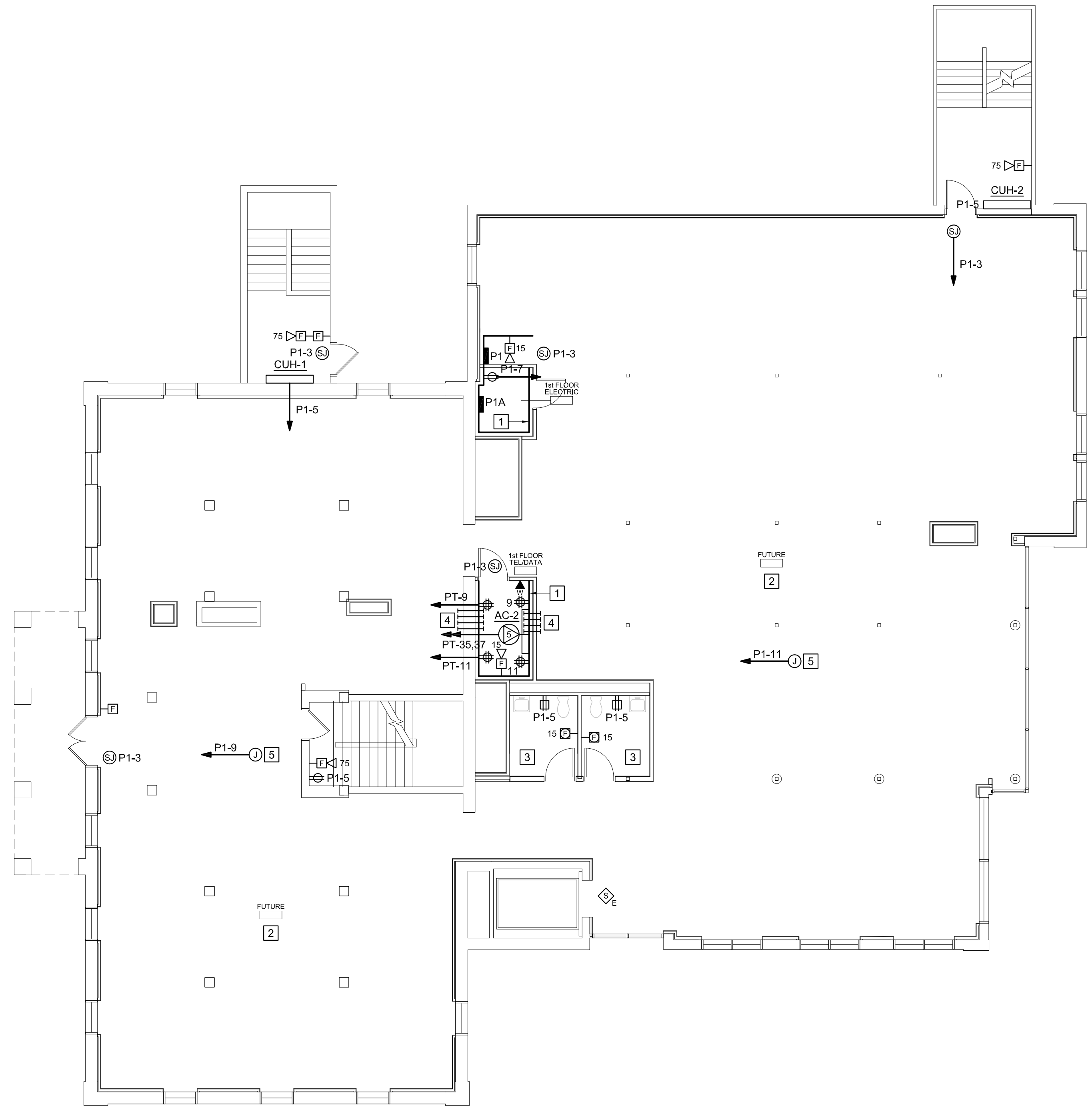
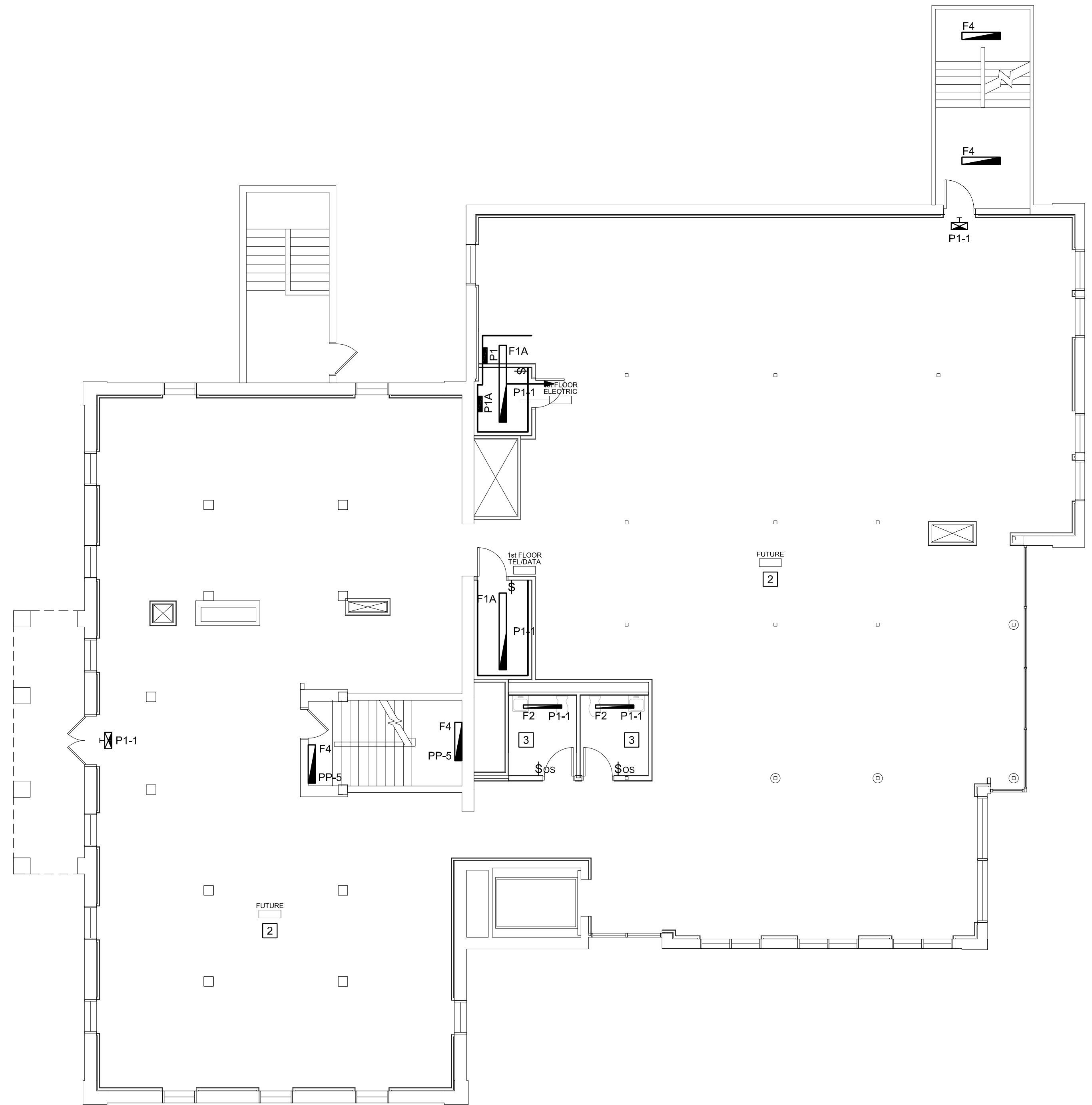
SCALE AS NOTED

ISSUE MAY 1 2011 FOR CONSTRUCTION

TITLE ELECTRICAL FIRST FLOOR PLANS

SHEET

E-101



C:\Users\alambert\AppData\Local\Temp\Temp2_Permit_Set_Dwg.sip\11022E.dwg Sep 19, 2011 - 8:40am

A1 LIGHTING PLAN ~ FIRST FLOOR
 1/8" = 1'-0"

A6 POWER AND SYSTEMS PLAN ~ FIRST FLOOR
 1/8" = 1'-0"