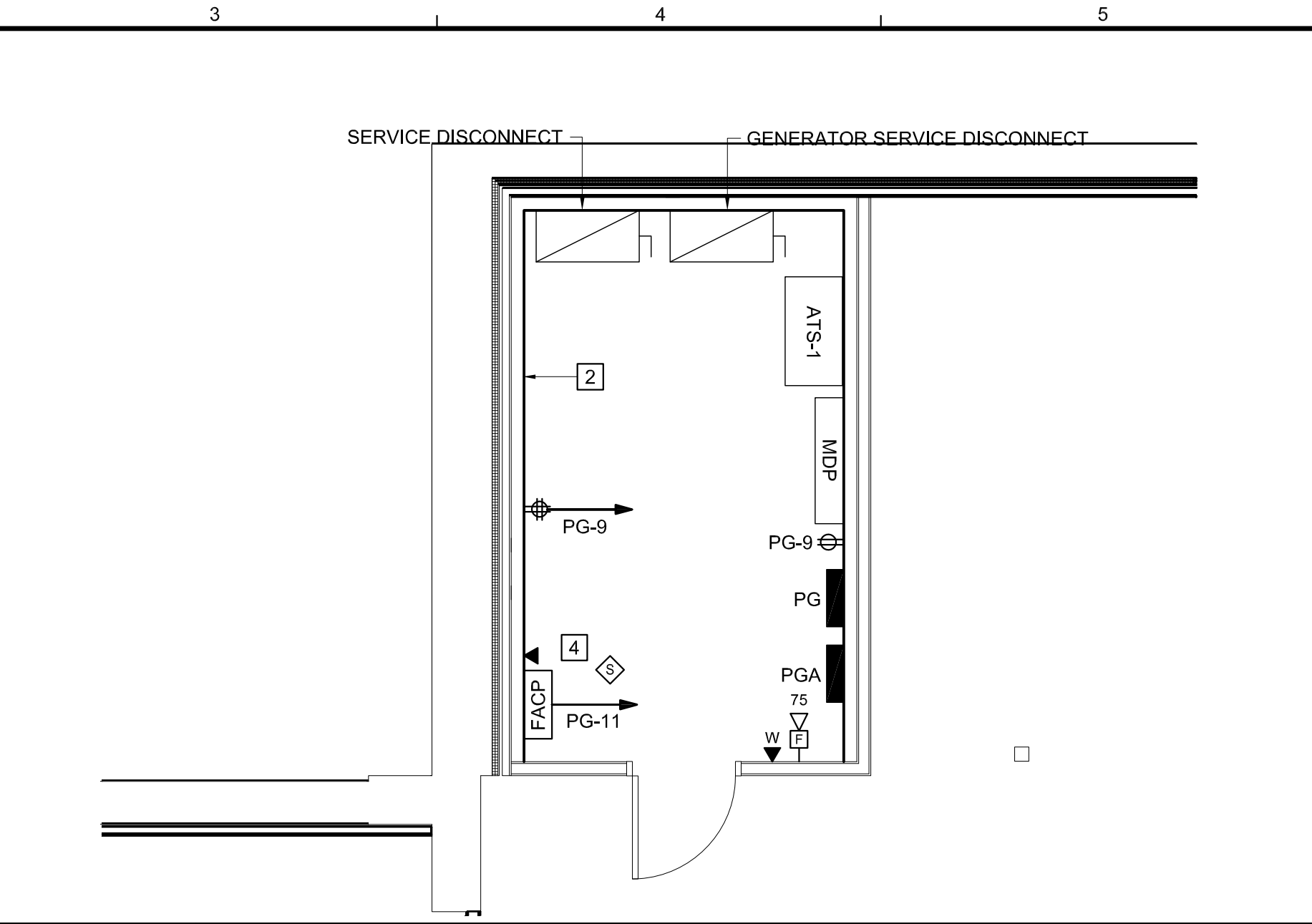
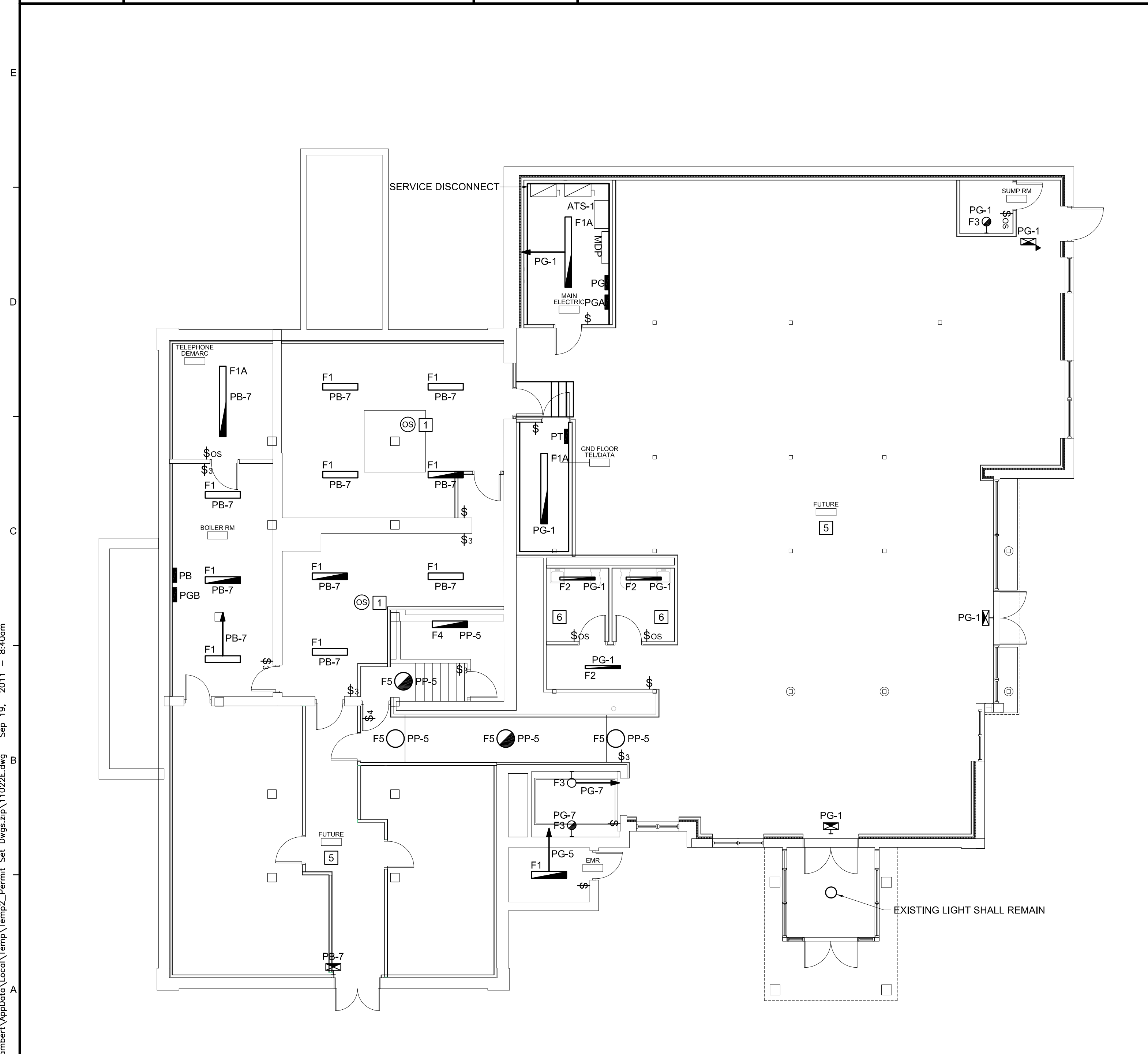


F4 ELEVATOR ENLARGED PLAN  
1/4" = 1'-0"

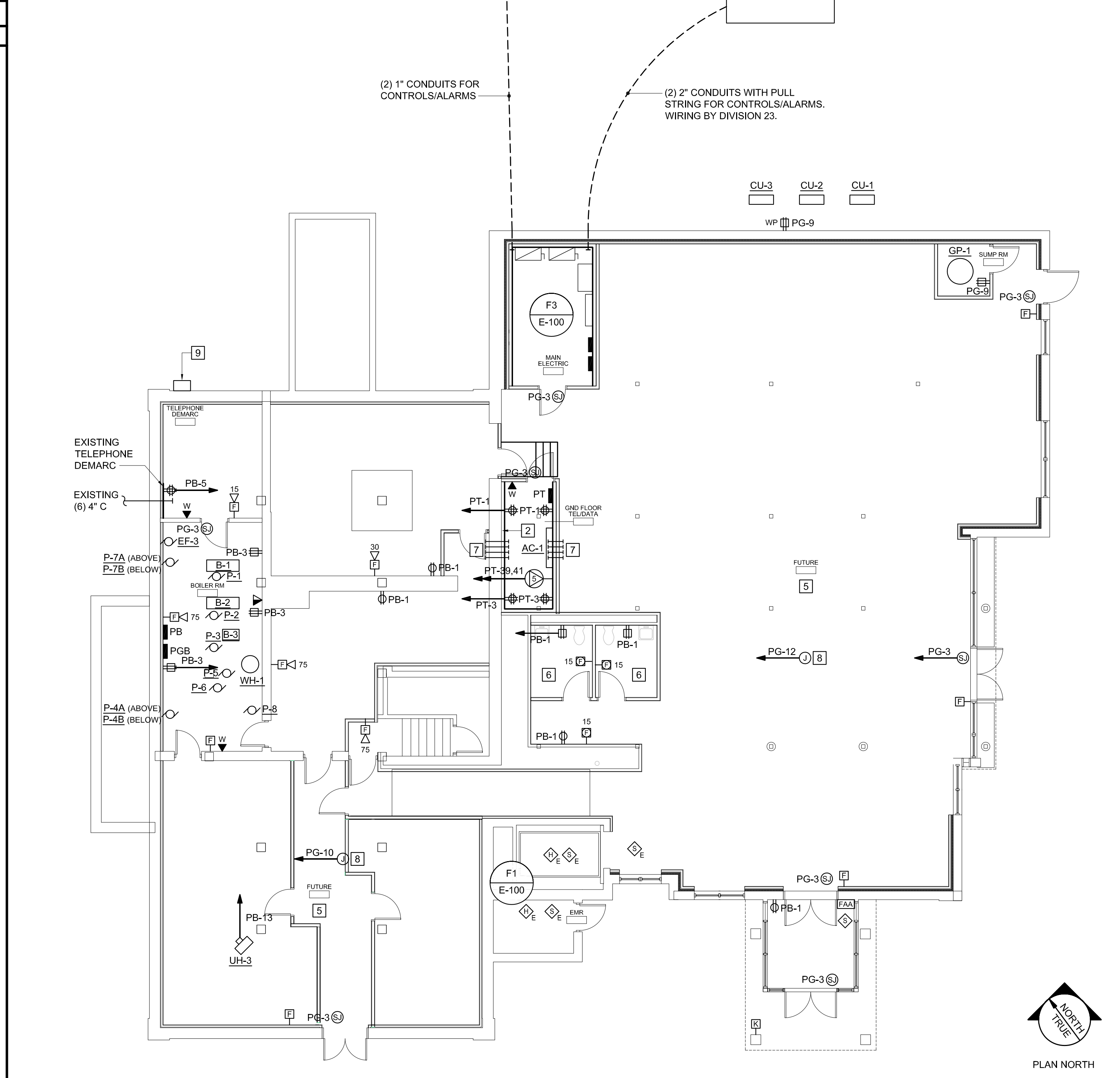


F3 ELECTRIC ROOM ENLARGED PLAN  
1/4" = 1'-0"



A1 LIGHTING PLAN ~ GROUND FLOOR  
1/8" = 1'-0"

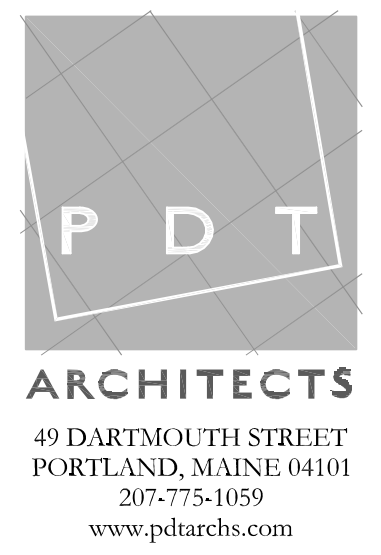
**GENERAL NOTE:**  
WIRE AND CONNECT ALL EXISTING BUILDING MOUNTED EXTERIOR LIGHTING, EXISTING VESTIBULE LIGHT, AND EXISTING PARKING LOT LIGHTING TO NEW PANELS (10 AMPS PER CIRCUIT MAXIMUM). PROVIDE TIME SWITCH WITH PHOTOCELL CONTROL. EXISTING WIRING MAY BE REUSED WHERE POSSIBLE.



A6 POWER AND SYSTEMS PLAN ~ GROUND FLOOR  
1/8" = 1'-0"

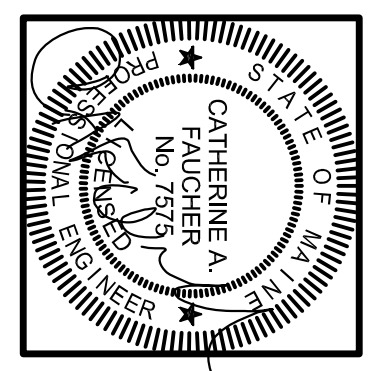
- 1 LIGHTING CONTROL: MANUAL ON, AUTO OFF VIA OCCUPANCY SENSOR
- 2 8' HIGH, 3/4" AC PLYWOOD BACKBOARD ALL AROUND ON 3 1/2" STANDOFFS - PAINT BOTH SIDES WITH (2) COATS OF BLACK FIRE RETARDANT PAINT
- 3 LIGHTING CONTROL: AUTO ON/AUTO OFF VIA OCCUPANCY SENSOR
- 4 PROVIDE FIRE ALARM RECORDS CABINET IN ACCORDANCE WITH CITY REQUIREMENTS
- 5 EXISTING TEMPORARY POWER AND LIGHTING SHALL REMAIN. WIRE AND CONNECT TO NEW PANELS.
- 6 PROVIDE CONDUIT, BOXES AND WIRING TO PANEL INDICATED FOR FUTURE LIGHTING AND DEVICES INDICATED. DEVICES AND LIGHTING SHALL BE INSTALLED AS PART OF THE FUTURE TENANT FIT-UP PROJECT.
- 7 (4) 4" SLEEVES FOR FUTURE TEL/DATA CABLING. MOUNT HORIZONTALLY AS HIGH TO STRUCTURE AS POSSIBLE.
- 8 PROVIDE JUNCTION BOX AND CIRCUIT FOR MECHANICAL CONTROLS
- 9 EXISTING 200A, 2P, 240V CIRCUIT BREAKER SHALL BE REPLACED WITH 200A, 2P, 30KAIC, 240V CIRCUIT BREAKER IN NEMA 3R ENCLOSURE. THIS BREAKER FEEDS THE ADJACENT ADMIN BUILDING.

F9 KEY NOTES



allied Project No: 11-022  
CAD File: 11022E

**MARTIN'S POINT - BUILDING 4**  
SHELL AND CORE RETROFIT  
PORTLAND, MAINE



PDT JOB NO.

DRWN. CHK.

SCALE AS NOTED

ISSUE MAY 1 2011 FOR CONSTRUCTION

TITLE ELECTRICAL GROUND FLOOR PLANS

SHEET

**E-100**

C:\Users\jambert\AppData\Local\Temp\Temp2\_Permit\_Set\_Dwg.dwg\11022E.dwg Sep 19, 2011 - 8:40am