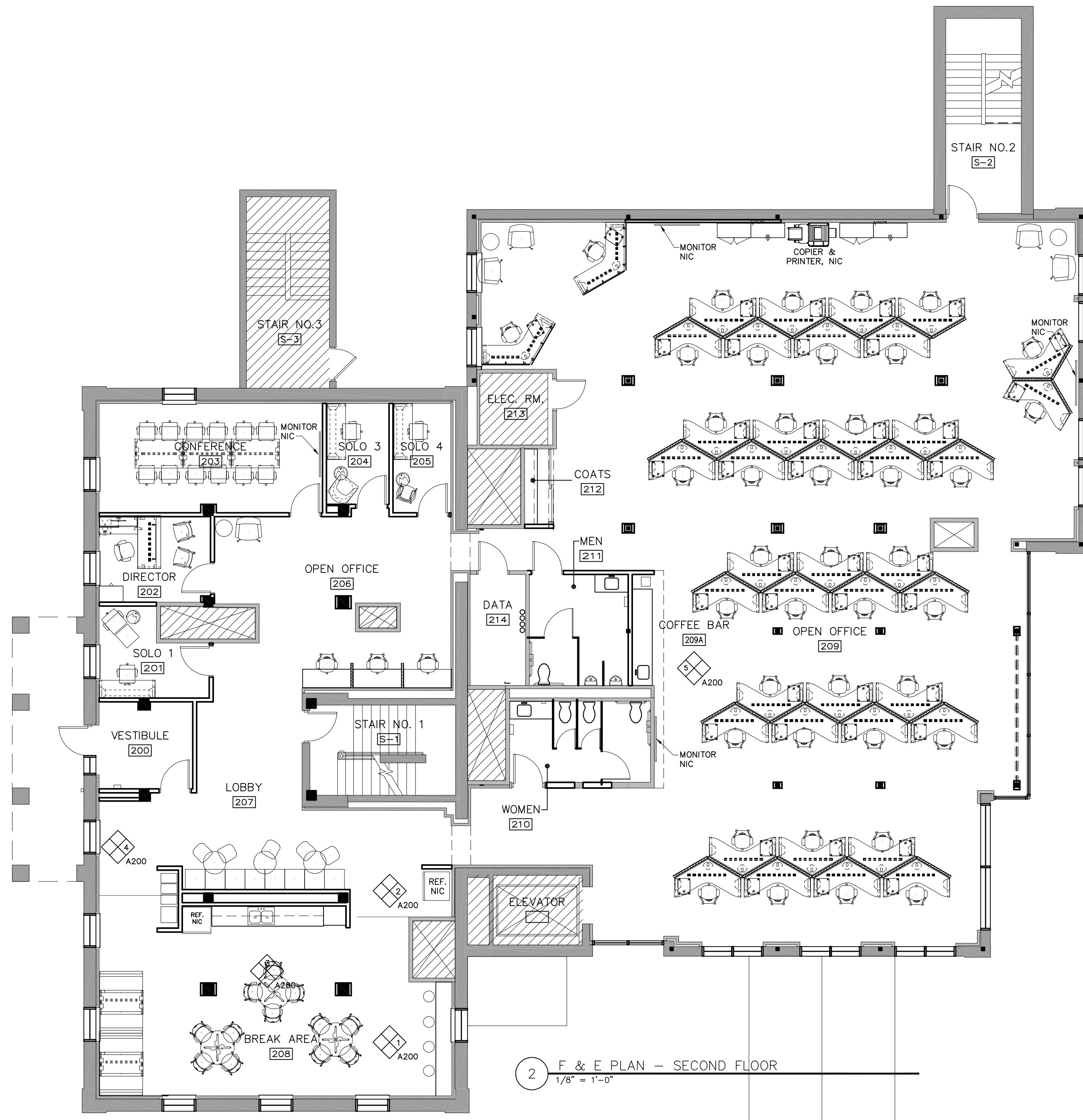


GRAPHIC LEGEND:

- CEILING MATERIAL
CEILING HEIGHT
OR "EXO" (EXISTING - HEIGHT TO REMAIN)
OR "TYP" (SEE TYPICAL DETAIL)
- NEW SUSPENDED ACOUSTICAL CEILING TILE
AND SUSPENSION SYSTEM.
CENTER ALL NEW SPRINKLER HEADS AND
CEILING MOUNTED DEVICES IN TILE, U.N.O.
- RECESSED DOWN LIGHT
- LINEAR FIXTURE
- PENDANT FIXTURE
- 2X2 INDIRECT LIGHT FIXTURE
- 2X4 INDIRECT LIGHT FIXTURE
- GYPSUM WALL BOARD
- AREA NOT IN SCOPE OF WORK

CEILING NOTES:

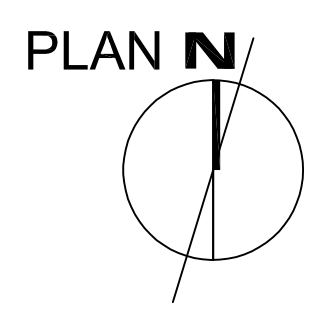
1. Ceiling plans do not show every fixture or component. Refer to electrical, plumbing, mechanical and structural drawings for extent of all ceiling penetrations and installations and coordinate prior to installation.
2. Center grid layout in all rooms unless noted otherwise.
3. All components mounted in or below a suspended acoustic ceiling shall be centered in the ceiling tile or in the 2x2 portion of regular ceiling tiles, unless noted otherwise. This shall include, but not be limited to, light fixtures, diffusers, speakers, smoke detectors, and sprinkler heads.
4. Prior to the installation of ceilings, allow for an above-ceiling inspection of components that will not be visible when the ceilings have been installed, including inspection of fire, smoke, and acoustical separations.



2 F. & E. PLAN - SECOND FLOOR
1/8" = 1'-0"



1 REFLECTED CEILING PLAN - SECOND FLOOR
1/8" = 1'-0"



K:\WP - 17114 - VERANDAST - BUILDING 4 - CALL CENTER\17114 - WORKING FILES\CAD CDS\1-31-18 - MPHC - BLDG 4 - CALL CENTER BASE.DWG