

K:\MP - 17114 - VERANDAST - BUILDING 4 - CALL CENTER\17114 - WORKING FILES\CAD\CD\17114 - MPHIC-BLDG 4 - CALL CENTER BASE.DWG

ABBREVIATIONS

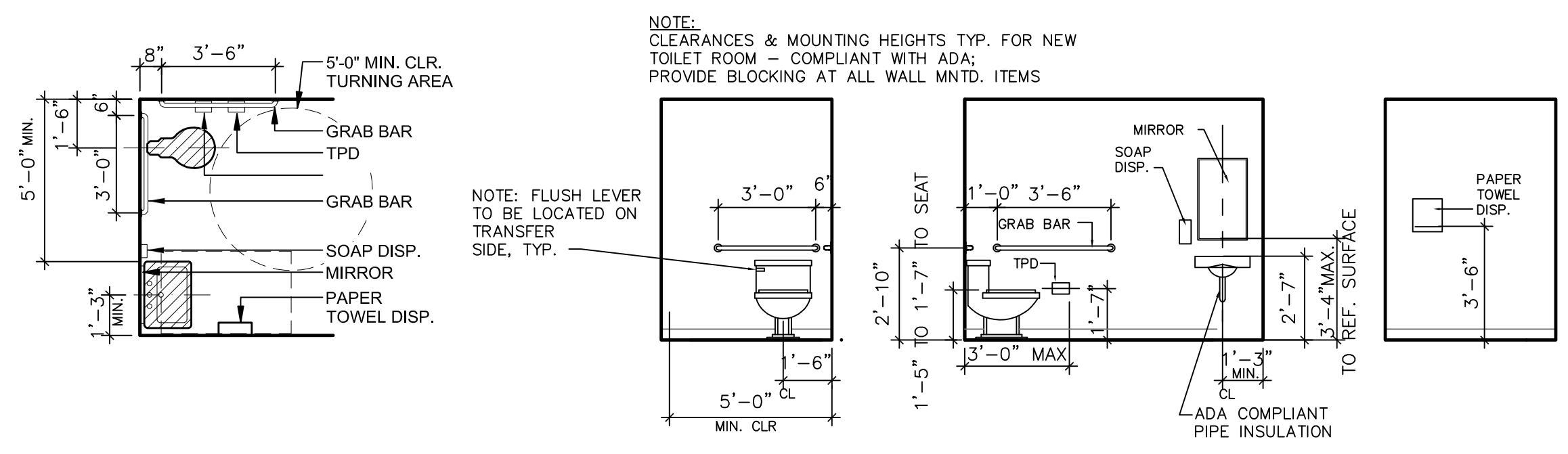
AB ANCHOR BOLT	DMP DEMOUNTABLE PARTITION	GLB GLASS, GLAZING	MSF METAL STUD FRAMING	SGL SAFETY GLASS
AB AIR BARRIER	DN DOWN	GWB GYPSUM WALLBOARD	MTL METAL	SH SHOWER
AC AIR CONDITIONING	DR DOOR			SHT SHEET
ADDL ADDITIONAL	DTL DETAIL			SHTHG SHEATHING
ADJ ADJUSTABLE	DWG DRAWING	HARD HARDENER	N NORTH	SIM SIMILAR
ADO AUTOMATIC DOOR OPERATOR	DWR DRAWER	HB HOSE BIBB	NA NOT APPLICABLE	SLNT SEALANT
AFF ABOVE FINISHED FLOOR		HC HOLLOW CORE	NIC NOT IN CONTRACT	SNR SANITARY NAPKIN RECEPTOR
AH AIR HANDLER		HD HEAD	NO NUMBER	SP SPECIAL PAINT
AIB AIR INFILTRATION BARRIER	E EAST	HDO HIGH DENSITY OVERLAY	NOM NOMINAL	SPEC SPECIFICATION
ALT ALTERNATE	EA EACH	HDWD HARDWOOD	NRC NOISE REDUCTION COEFFICIENT	SPKR SPEAKER
ALUM ALUMINUM	EF EXHAUST FAN	HDWR HARDWARE	NTS NOT TO SCALE	SQ SQUARE
AOR AREA OF REFUGE	EMHO ELECTRO MAGNETIC HOLD OPEN	HM HOLLOW METAL		SS STAINLESS STEEL
APPROX APPROXIMATE	EIFS EXTERIOR INSULATION FINISH SYSTEM	HORIZ HORIZONTAL	O/ OVER	STC SOUND TRANSMISSION CLASS
ARCH ARCHITECT(URAL)	EJ EXPANSION JOINT	HR HAND RAIL	OC ON CENTER	STD STANDARD
ARND AROUND	EL ELEVATION	HS HIGH SCHOOL	OD OUTSIDE DIAMETER	STL STEEL
AVB AIR/VAPOR BARRIER	EP EPOXY PAINT	HT HEIGHT	OFS OVERFLOW SCUPPER	STOR STORAGE
AWP ACOUSTICAL WALL PANEL	ELEC ELECTRICAL	HTG HEATING	OP OPAQUE	STRL STRUCTURAL
	ELEV ELEVATOR	HVAC HEATING/VENTILATION/AIR CONDITIONING	OH OVERHEAD	STRUCT STRUCTURE/STRUCTURAL
BD BOARD	EMER EMERGENCY		OPH OPPOSITE HAND	SUPT SUPPORT
BF BARRIER FREE	ENCL ENCLOSED/ENCLOSURE	IBC INSTALLED BY CONTRACTOR	OPNG OPENING	SUSP SUSPENDED
BIT BITUMINOUS	EQ EQUAL	ID INSIDE DIAMETER	OPP OPPOSITE	SV SHEET VINYL
BLDG BUILDING	EQIP EQUIPMENT	IN INCH (ES)	OPS OPERABLE PANEL SYSTEM	
BLKG BLOCKING	EXH EXHAUST	INCL INCLUDE (D), (ING)		T TOILET
BM BENCHMARK	EXIST EXIST	INFO INFORMATION	P, PTD PAINT	TB TOWEL BAR
BOT BOTTOM	EKT EXTERIOR	INSUL INSULATED	PC PRECAST CONC.	TACKBOARD TACKBOARD
BO BOTTOM OF	EW EYEWASH	INT INTERIOR	PERF PERFORATED	T&G TONGUE AND GROOVE
BRK BRICK	EWC ELECTRIC WATER COOLER	INV INVERT	PRKG PARKING	TGL TEMPERED GLASS
BRG BEARING		JT JOINT	PL PLATE	THK THICK(NESS)
B/S BRICK SHELFL		KIT KITCHEN	PLAM PLASTIC LAMINATE	TO TOP OF
BSMT BASEMENT	FB FIRE BLANKET		PLYWD PLYWOOD	TP TOILET PARTITION
	FBO FURNISHED BY OWNER	LAB LABORATORY	PSF POUNDS PER SQUARE FOOT	TPD TOILET PAPER DISPENSER
C, CRS COURSE	FCS FLOOR COATING SYSTEM	LAM LAMINATE (D)	PT POUNDS PER SQUARE INCH	TV TELEVISION
CAB CABINET	FD FLOOR DRAIN	LAV LAVATORY	PTD PAPER TOWEL DISPENSER	TYP TYPICAL
CB CATCH BASIN	FE FIRE EXTINGUISHER	LB POUND (S)	PTN PARTITION	UCR UNDER COUNTER REFRIGERATOR
CC CENTER TO CENTER	FEK FIRE EXTINGUISHER AND CABINET	LCC LEAD COATED COPPER	PVC POLYVINYL CHLORIDE	UNO UNLESS NOTED OTHERWISE
CF CUBIC FOOT	FFE FINISHED FLOOR ELEVATION	LH LEFT HAND	PVMT PAVEMENT	
CFMF COLD FORMED METAL FRAMING	FG FIBERGLASS	LOC'N LOCATION		VB VAPOR BARRIER/VINYL BASE
CJ CONTROL JOINT	FHVC FIRE HOSE AND VALVE CABINET	LW LIGHTWEIGHT (CMU)	QR QUARTER ROUND	VC VALVE CABINET
CL CENTERLINE	FIN FINISHED	MAS MASONRY	QT QUARRY TILE	VCT VINYL COMPOSITION TILE
CLG CEILING	FIN GR FINISH GRADE	NATL MATERIAL		VERT VERTICAL
CLR CLEAR	FLR FLOOR(ING)	MAX MAXIMUM	RE: REFERENCE	VPW VENER PLYWOOD
CMT CERAMIC MOSAIC TILE	FMB FIBERGLASS MAT BOARD	MC MEDICINE CABINET	REQ'D REQUIRED	WVC VINYL WALL COVERING
CMU CONCRETE MASONRY UNIT	FNDN FOUNDATION	MCWF MULTI COLOR WALL FINISH	REV REVISION (S), REVISED	W WEST
CO CLEANOUT	FP FIREPROOFING	MDO MEDIUM DENSITY OVERLAY	RL RAIN LEADER	W/ WITH
COL COLUMN	FRMG FRAME(ING)	MECH MECHANICAL	RF RUBBER FLOOR	WC WATER CLOSET
CONC CONCRETE	FRP FIBER REINFORCED PLASTIC	MEC MEDIUM	RH RIGHT HAND	WD WOOD
CONC/C COLORED CONCRETE	FRT FIRE RETARDANT TREATED	MF MEMBRANE FLASHING	RM ROOM	WGL WIRE GLASS
CONT CONTINUOUS OR CONTINUE	FSR FLEXIBLE SHEET ROOFING	MFR MANUFACTURER	RO ROUGH OPENING	WH WATER HEATER
CONTR CONTRACTOR	FT FOOT(FEET)	MIN MINIMUM	ROW RIGHT OF WAY	W/O WITHOUT
CPT CARPET	FTG FOOTING	MISC MISCELLANEOUS	S SOUTH	WS WATERSTOP
CS COUNTERSINK	FTR FIN TUBE RADIATION	MLDG MOULDING, MOULDING	SAT SUSPENDED ACOUSTICAL TILE	WP WATERPROOF
CSMT CASEMENT	FUR FURRED(ING)	MO MASONRY OPENING	SC SOLID CORE	WVF WELDED WIRE FABRIC
CT CERAMIC TILE	FV FIELD VERIFY	MR MOISTURE RESISTANT	SCHED SCHEDULE	WWW WELDED WIRE MESH
CWT CERAMIC WALL TILE	FWC FABRIC WALL COVERING	MRGB MOISTURE RESISTANT GYPSUM BOARD	SD STORM DRAIN, SOAP DISPENSER	YD YARD
CUH CABINET UNIT HEATER	GA GAUGE	MS MOP SINK	SECT SECTION	ZCC ZINC-COATED COPPER
CY CUBIC YARD	GALV GALVANIZED		SF SQUARE FOOT	
	GB GRAB BAR			
	GFB GROUND FACE CMU			

GENERAL NOTES:

- ALL DIMENSIONS ARE TO FACE OF NEW STUDS OR FACE OF EXISTING WALL FINISH.
- CONTRACTOR TO VERIFY ALL EXISTING CONDITIONS PRIOR TO COMMENCING WORK. CONTRACTOR TO NOTIFY ARCHITECT AND OWNER IMMEDIATELY IF FIELD CONDITIONS ARE DISCOVERED TO DIFFER FROM CONDITIONS DESCRIBED IN THE CONSTRUCTION DOCUMENTS.
- PATCH AND REPAIR ALL EXISTING CONSTRUCTION AFFECTED BY DEMOLITION OR REMOVAL OF EXISTING CONSTRUCTION.
- SEAL AROUND ALL NEW PENETRATIONS IN NEW AND EXISTING CORRIDOR WALLS TO RESIST THE PASSAGE OF SMOKE BETWEEN CORRIDORS AND ADJACENT SPACES.
- ALL PENETRATIONS THROUGH FIRE-RESISTANCE-RATED ASSEMBLIES SHALL BE SEALED WITH TESTED AND APPROVED FIRESTOP SYSTEMS.
- CONTRACTOR SHALL INSTALL OWNER SUPPLIED ITEMS INCLUDING, BUT NOT LIMITED TO:
- SOAP DISPENSERS
- TOILET TISSUE DISPENSERS
- PAPER TOWEL DISPENSERS
- WINDOW SHADES
- MAINTAIN 18" CLEAR AT PULL SIDE OF DOORS.
- CONTRACTOR SHALL BE RESPONSIBLE FOR COORDINATING LOCATIONS OF POWER AND TEL/DATA WITH OWNER PRIOR TO COMMENCEMENT OF WORK.
- INSTALL BLOCKING BEHIND ALL SURFACE APPLIED FIXTURES, TRIM, GRAB BARS, CASEWORK AND MISC. ACCESSORIES.
- INSTALL MOISTURE RESISTANT GWB AT ALL WET LOCATIONS WITHIN 8'-0" OF ANY PLUMBING FIXTURE.

GENERAL PATCHING AND REPAIRING NOTES

- Where new construction either infills or abuts existing construction, the finished faces shall align, and the surfaces shall be finished to match.
- After cutting, fitting, or removal of building components, any resulting holes shall be patched. Such patches shall be flush with adjacent surfaces and finished to match.
- Maintain fire ratings, smoke ratings, and acoustical ratings.
- Provide metal cover plates at all abandoned electrical devices, finished to match wall.



1 TYPICAL BARRIER FREE PLANS & ELEVATIONS
1/4" = 1'-0"



JOB NO.
17114

DRWN. CHK

SCALE:
As Noted

ISSUE
Permit Set
January 31, 2018

TITLE
Abbreviations,
General Notes,
Barrier Free Details

SHEET

A001