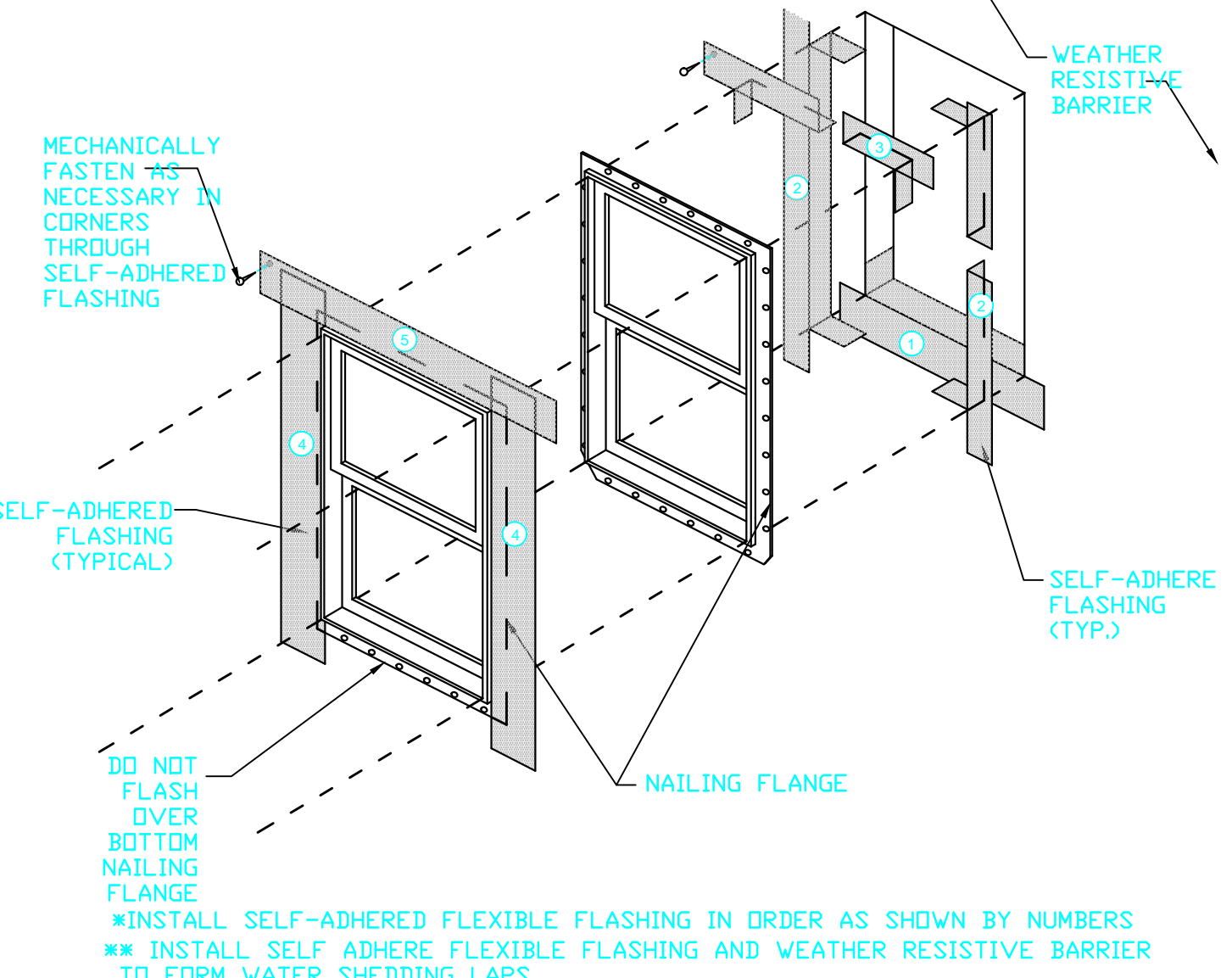
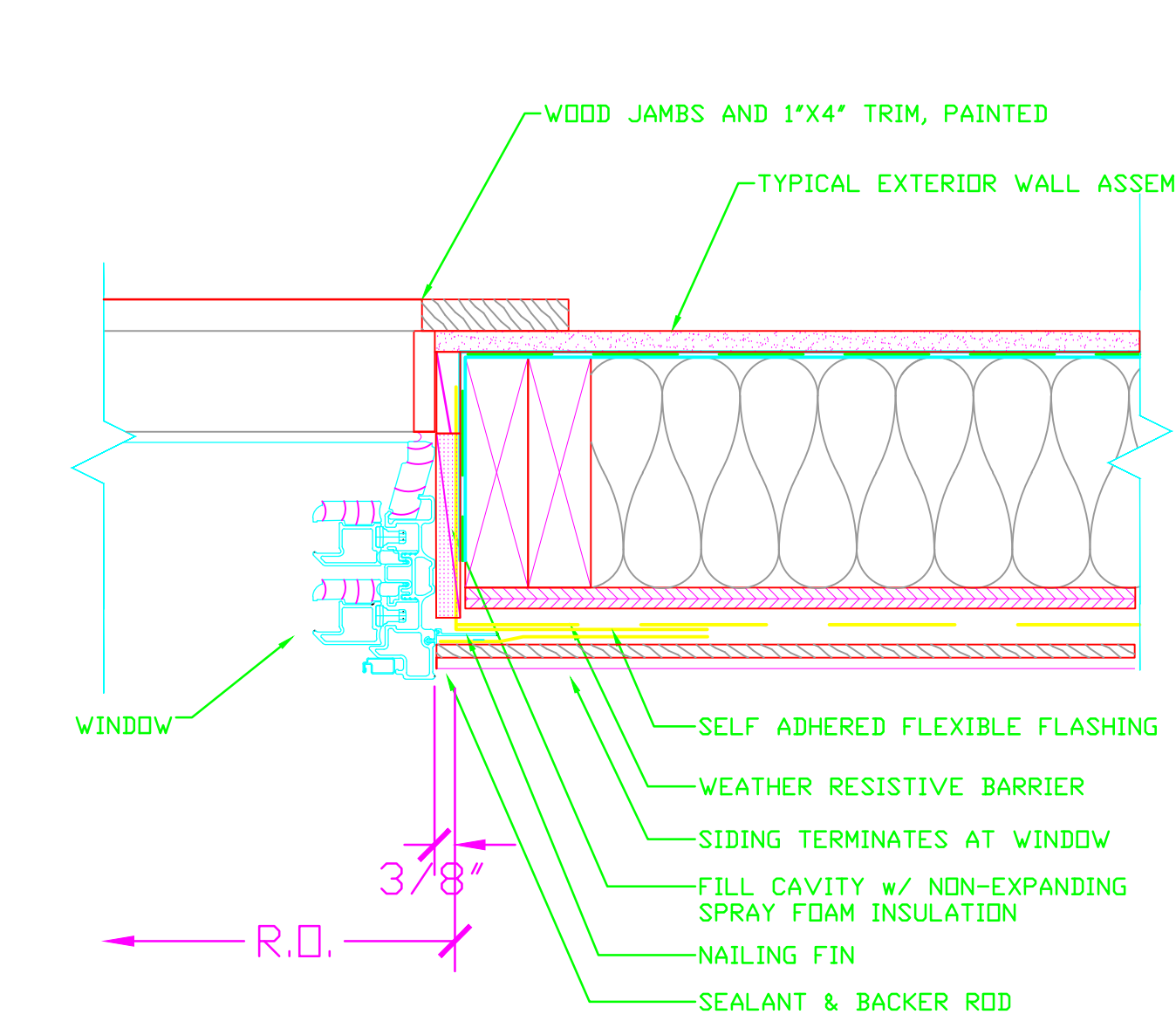


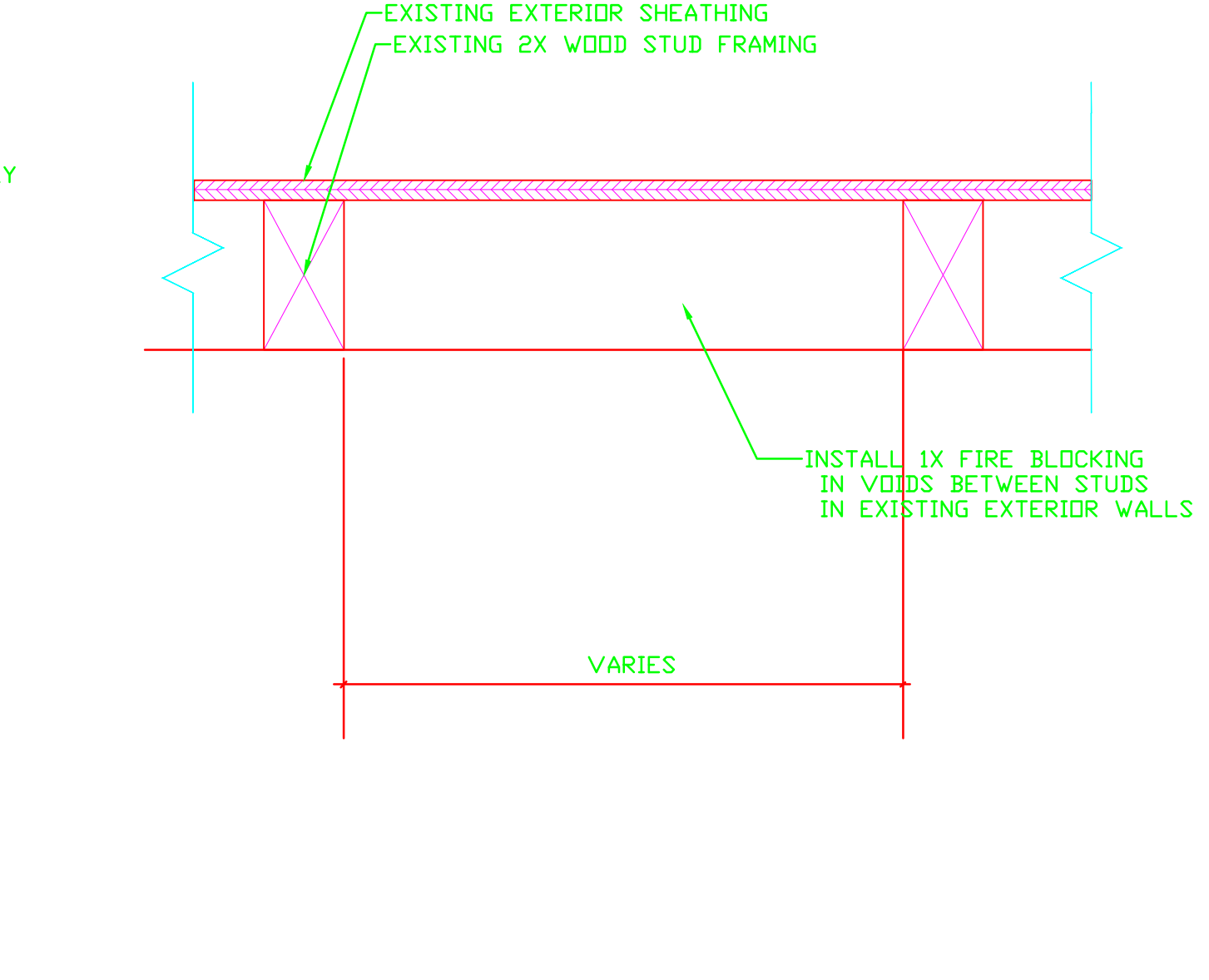
1 DOUBLE HUNG HEAD
A106 3' = 1'-0"



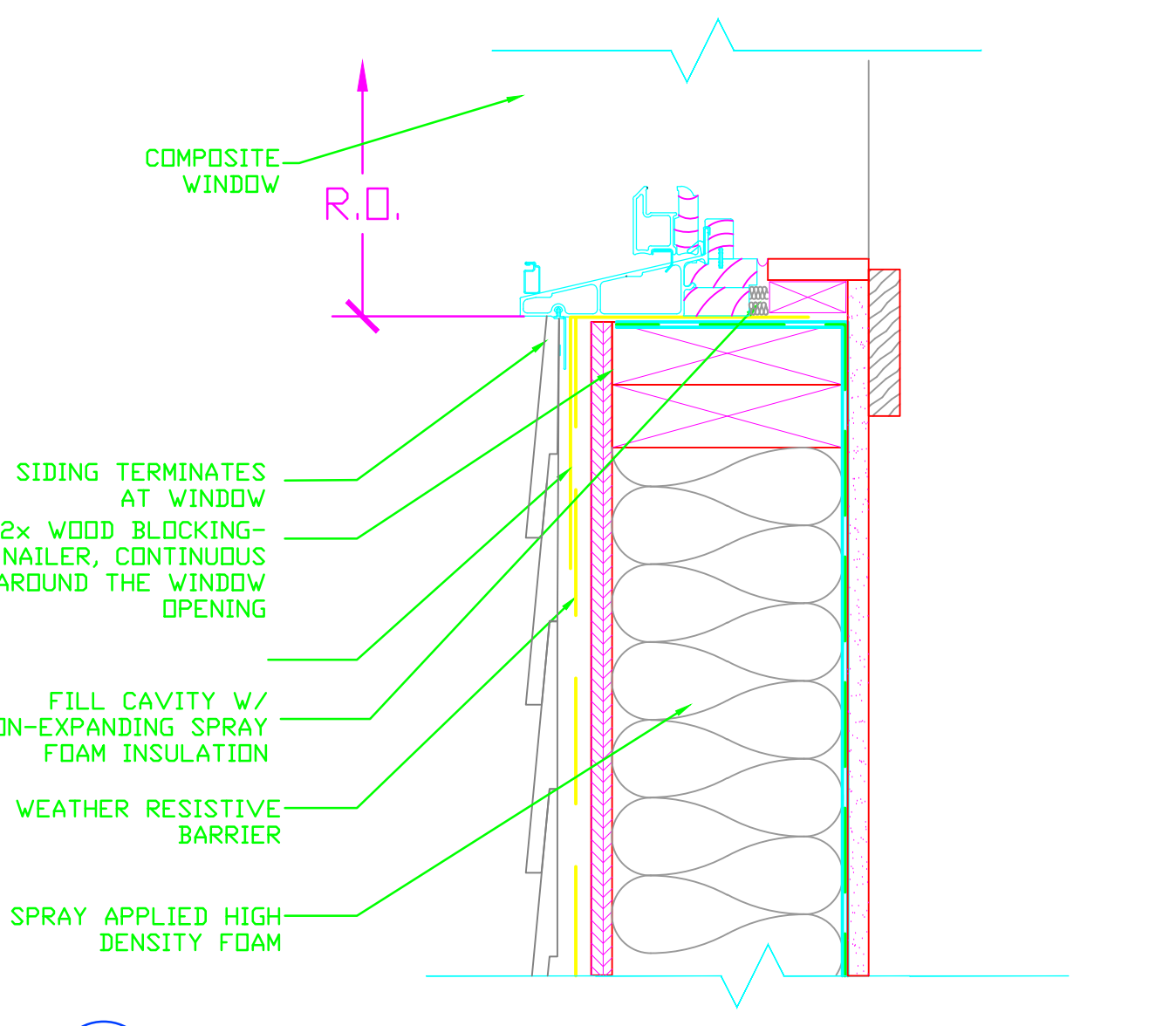
4 TYPICAL FLASHING INSTALLATION
A106 3' = 1'-0"



2 DOUBLE HUNG JAMB
A106 3' = 1'-0"



5 TYPICAL FIRE PLAN DETAIL EXTERIOR WALLS
A106 3' = 1'-0"



3 DOUBLE HUNG SILL
A106 3' = 1'-0"

WINDOW SCHEDULE						
WINDOW NO.	UNIT DIMENSIONS	TYPE	MANUFACTURER	CATALOG NUMBER	GLAZING	REMARKS
A	4'-8 7/8" X 2'-5 5/8"	DH	ANDERSON	WDH24X46	LOW E HIGH PERFORMANCE	
B	2'-5 5/8" X 4'-5 1/4"	DH	ANDERSON	200 SERIES 2442	LOW E HIGH PERFORMANCE	
C	2'-1 5/8" X 3'-5 1/4"	DH	ANDERSON	200 SERIES 2032	LOW E HIGH PERFORMANCE	
D	2'-1 5/8" X 3'-5 1/4"	DH	ANDERSON	200 SERIES 3046	LOW E HIGH PERFORMANCE	EGRESS SIZE
E	2'-1 5/8" X 4'-5 1/4"	DH	ANDERSON	200 SERIES 2042	LOW E HIGH PERFORMANCE	
F	2'-9 5/8" X 4'-5 1/4"	DH	ANDERSON	200 SERIES 2842	LOW E HIGH PERFORMANCE	
G	2'-0 1/8" X 2'-0 1/8"	AWNING	ANDERSON	400 SERIES A21	LOW E HIGH PERFORMANCE	
H	FLEXI FRAME AS SHOWN	DH	ANDERSON	200 SERIES 2442	LOW E HIGH PERFORMANCE	



DOOR SCHEDULE									
DOOR NO.	SIZE	MAT'L	TYPE	GLAZE MAT'L	FRAME ELEV	TYPE	FIRE RTG. (MIN.)	REMARKS	
B100	2'-10" X 5'-10"	STEEL	4	-	WD/STL	2	45 MIN	THERMA-TRU SE100, CUSTOM SIZE	
100	3'-0" X 6'-8"	FBR GLASS	3	TEMP INS	WD	1	-	LOW E GLAZING	
100A	2'-0" X 6'-6"	WOOD	1	-	WD	1	-		
101	2'-6" X 6'-6"	WOOD	1	-	WD	1	-		
102	(2) 2'-6" X 6'-8"	WOOD	5	-	WD	1	-		
103	2'-8" X 6'-8"	FBR GLASS	3	TEMP INS	WD	1	-	LOW E GLAZING	
103A	(2) 2'-6" X 6'-8"	CLAD WOOD	6	TEMP INS	WD	1	-	LOW E GLAZING	
104	2'-0" X 6'-6"	WOOD	1	-	WD	1	-		
105	2'-8" X 6'-8"	STEEL	2	-	WD/STL	2	45 MIN		
105A	EXISTING RELOCATED	-	-	-	-	-	-	RELOCATE DOOR & FRAME FROM EXG BASEMENT ACCESS	
105B	2'-0" X 3'-4"	WOOD	1	-	WD	1	-	CUSTOM SIZE DOOR	
106	2'-4" X 6'-6"	WOOD	1	-	WD	1	-	PRIVACY LOCKSET	
106A	2'-0" X 6'-6"	WOOD	1	-	WD	1	-		
107	EXISTING RELOCATED	-	-	-	-	-	-	RELOCATE DOOR & FRAME FROM EXG BASEMENT ACCESS	
G107	(2) 9'-0" X 8'-0"	INS. STEEL	7	-	WD	1	-	OVERHEAD DOORS-G.C. VERIFY DIMENSIONS	
200	1'-4" X 6'-6"	WOOD	1	-	WD	1	-		
201	2'-4" X 6'-6"	WOOD	1	-	WD	1	-	PRIVACY LOCKSET	
201A	1'-4" X 6'-6"	WOOD	1	-	WD	1	-		
202	2'-6" X 6'-6"	WOOD	1	-	WD	1	-		
202A	(2) 2'-6" X 6'-6"	WOOD	1	-	WD	1	-	SLIDING DOOR HARDWARE	
203	2'-6" X 6'-6"	WOOD	1	-	WD	1	-		
203A	2'-0" X 6'-6"	WOOD	1	-	WD	1	-		
204	2'-6" X 6'-6"	WOOD	1	-	WD	1	-		
204A	1'-4" X 6'-6"	WOOD	1	-	WD	1	-		
205	2'-6" X 6'-6"	WOOD	1	-	WD	1	-		
205A	(2) 2'-6" X 6'-6"	WOOD	1	-	WD	1	-	SLIDING DOOR HARDWARE	
205B	(2) 2'-6" X 6'-6"	WOOD	1	-	WD	1	-	SLIDING DOOR HARDWARE	
205C	(2) 3'-0" X 6'-8"	CLAD WD	6	TEMP INS	WD	1	-	LOW E GLAZING/ CLAD WOOD TRANSOM TO MATCH DOORS	
206	2'-4" X 6'-6"	WOOD	1	-	WD	1	-	PRIVACY LOCKSET	
206A	1'-0" X 6'-6"	WOOD	1	-	WD	1	-		

1	ISSUED FOR CONSTRUCTION	6/12/12
0	ISSUED FOR CONSTRUCTION	6/12/12

ISSUED FOR REVIEW

CURRENT ISSUE STATUS:

MAINE DESIGN STUDIO
ARCHITECTURE DESIGN + PLANNING
3 PIPELINE ROAD
WINDHAM, MAINE 04062
(207) 892-3907

WINDOW & DOOR SCHEDULES & DETAILS