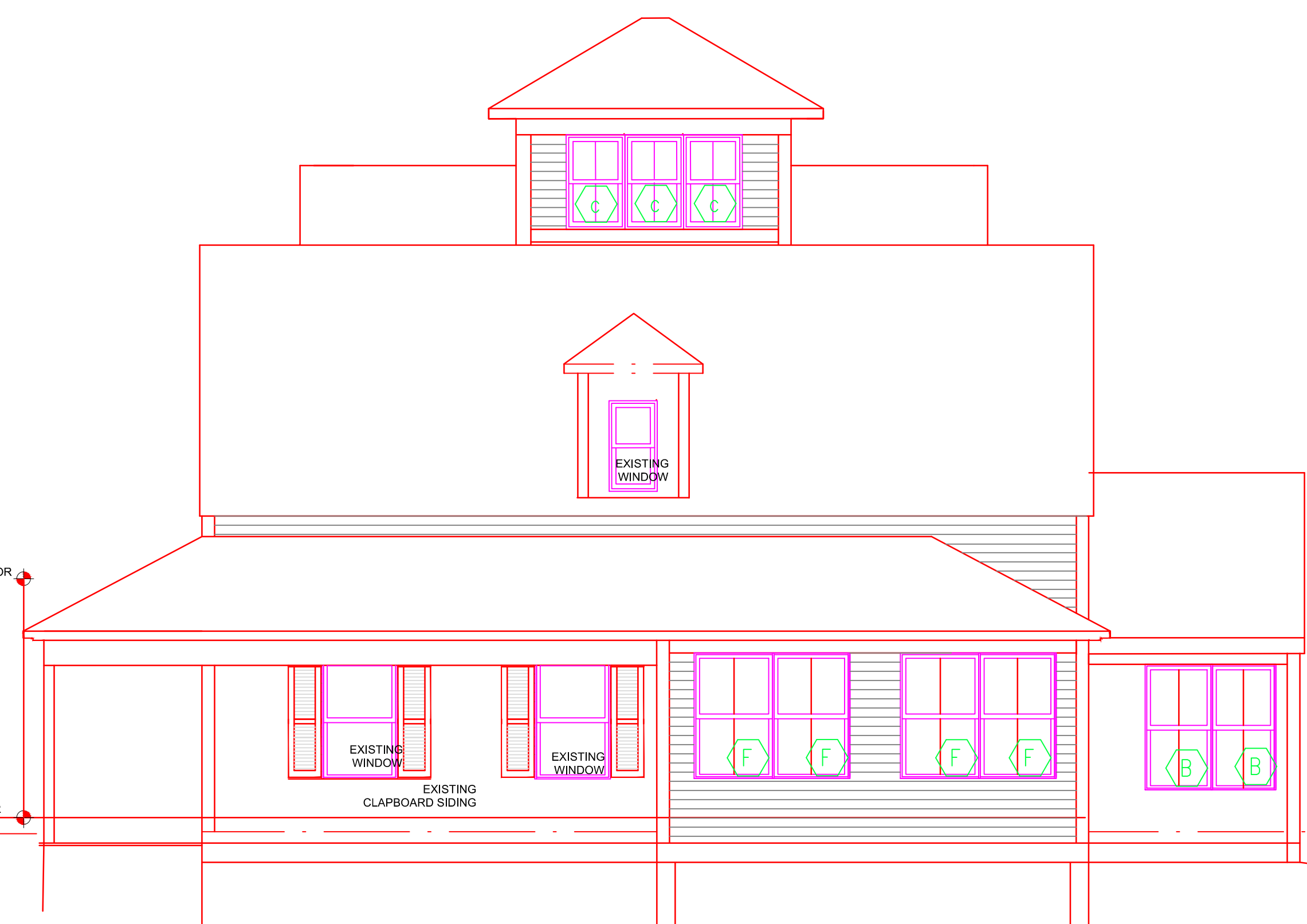




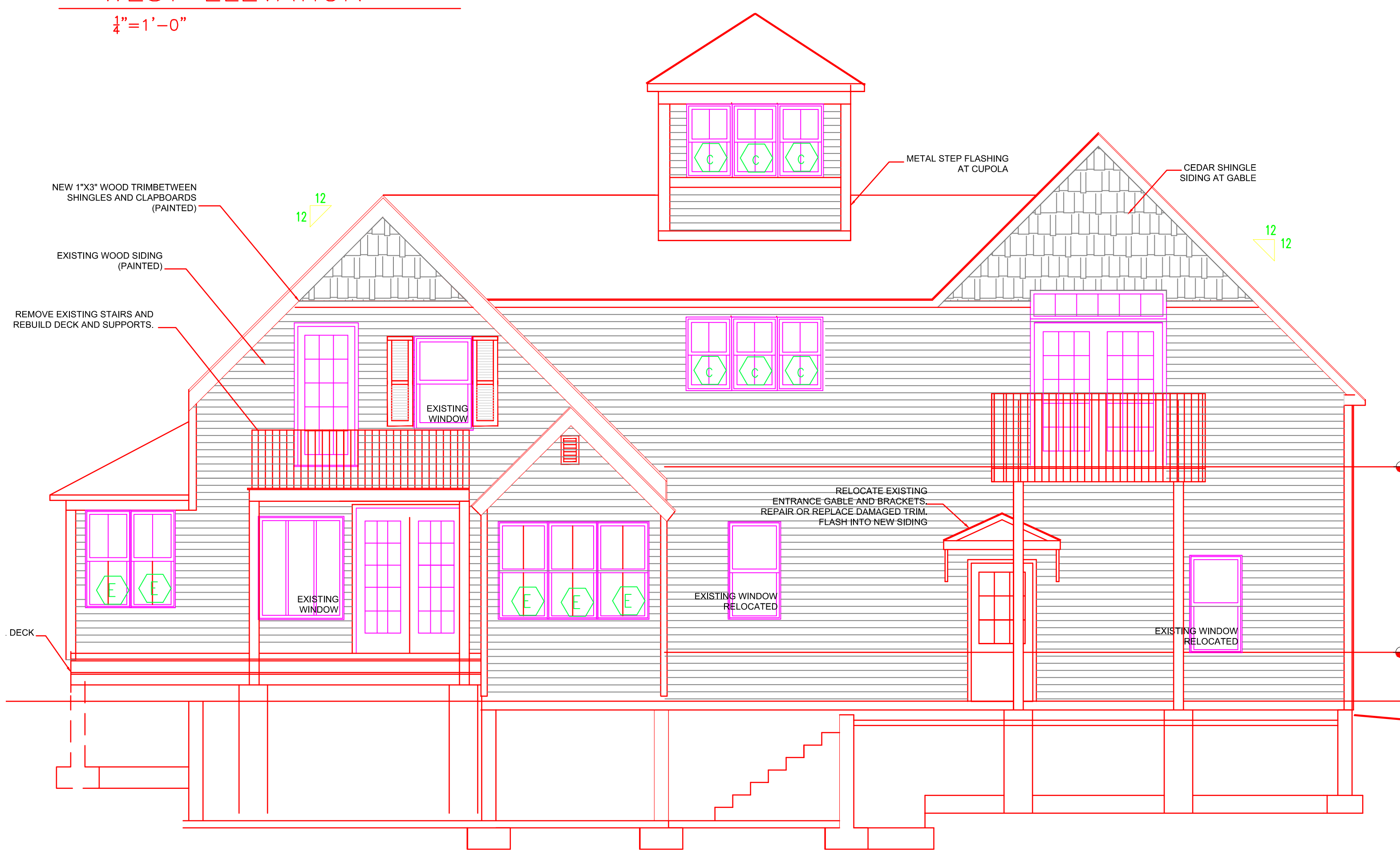
WEST ELEVATION

1/4" = 1'-0"



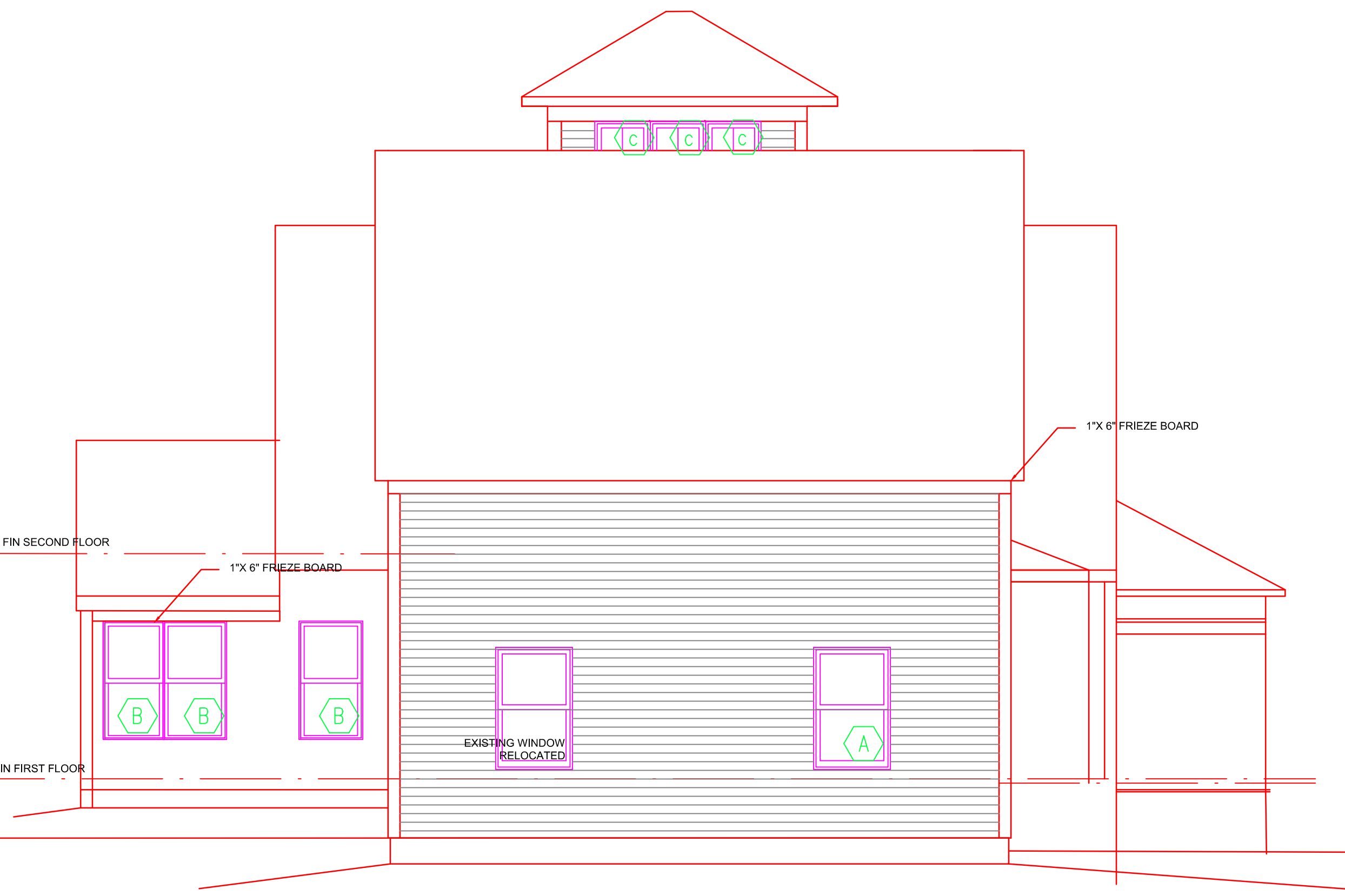
SOUTH ELEVATION

1/4" = 1'-0"



EAST ELEVATION

1/4" = 1'-0"



NORTH ELEVATION

1/4" = 1'-0"

REV.	DESCRIPTION	DATE
1	ISSUED FOR CONSTRUCTION	6/12/12

CURRENT ISSUE STATUS:

**MAINE DESIGN STUDIO**  
**ARCHITECTURE**  
**DESIGN + PLANNING**  
 3 PIPELINE ROAD  
 WINDHAM, MAINE 04062  
 (207) 892-3907

**NADEAU STOVER RESIDENCE**  
**ADDITIONS AND RENOVATIONS**  
 PORTLAND, MAINE

**EXTERIOR ELEVATIONS**

SHEET TITLE:		
DATE:	06/12/12	
SCALE:	AS NOTED	
PROJECT NO.		SHEET No.
DRAWN BY:	EOS	<b>A 105</b>
A/E OF RECORD:	EOS	