

PROPOSED GARAGE FL² (22' X 12') = 264 ft²

PROPOSED BREEZEWAY ADDITION (6'2" X 11'3") = 69.38 ft²

264 ft²

+ 69.38 ft²

333.38 ft² PROPOSED

357.04 ft² ALLOWABLE

VOLUMES

① GARAGE - 9'H X 12'W X 22'D = 2376 ft³

② TRIANGLE ABOVE GARAGE -

2'H X 12'W X 22'D = 528 ft³ ÷ 2 =

264 ft³

③ BREEZEWAY - 11'H X 6'2"W X 11'3"D =

763.13 ft³

④ TRIANGLE ABOVE BREEZEWAY -

1'H X 6'2"W X 11'3"D =

69.38 ft³ ÷ 2 =

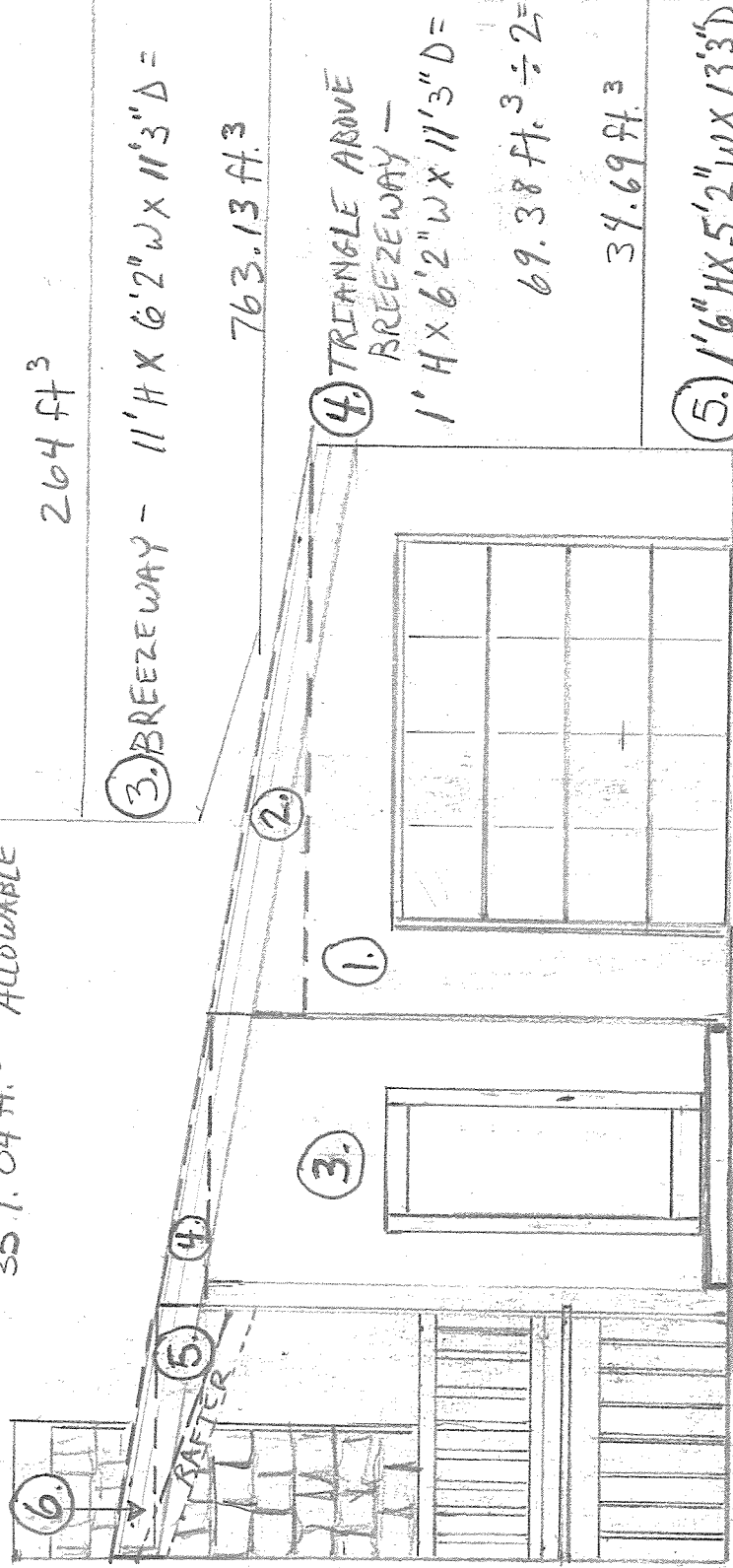
34.69 ft³

⑤ 1'6" H X 5'2" W X 13'3" D

102.69 ft³ ÷ 2 = 51.35 ft³

⑥ 1'H X 5'2"W X 13'3"D =

68.46 ft³ ÷ 2 = 34.23 ft³



1/4" = 1'

DOTTED LINE ----- = EXISTING PORCH ROOF

DASHED LINE - - - - - = VOLUME COMPUTATION REFERENCE

VOLUMES

① 2376 ft³

② 264 ft³

③ 763.13 ft³

④ 34.69 ft³

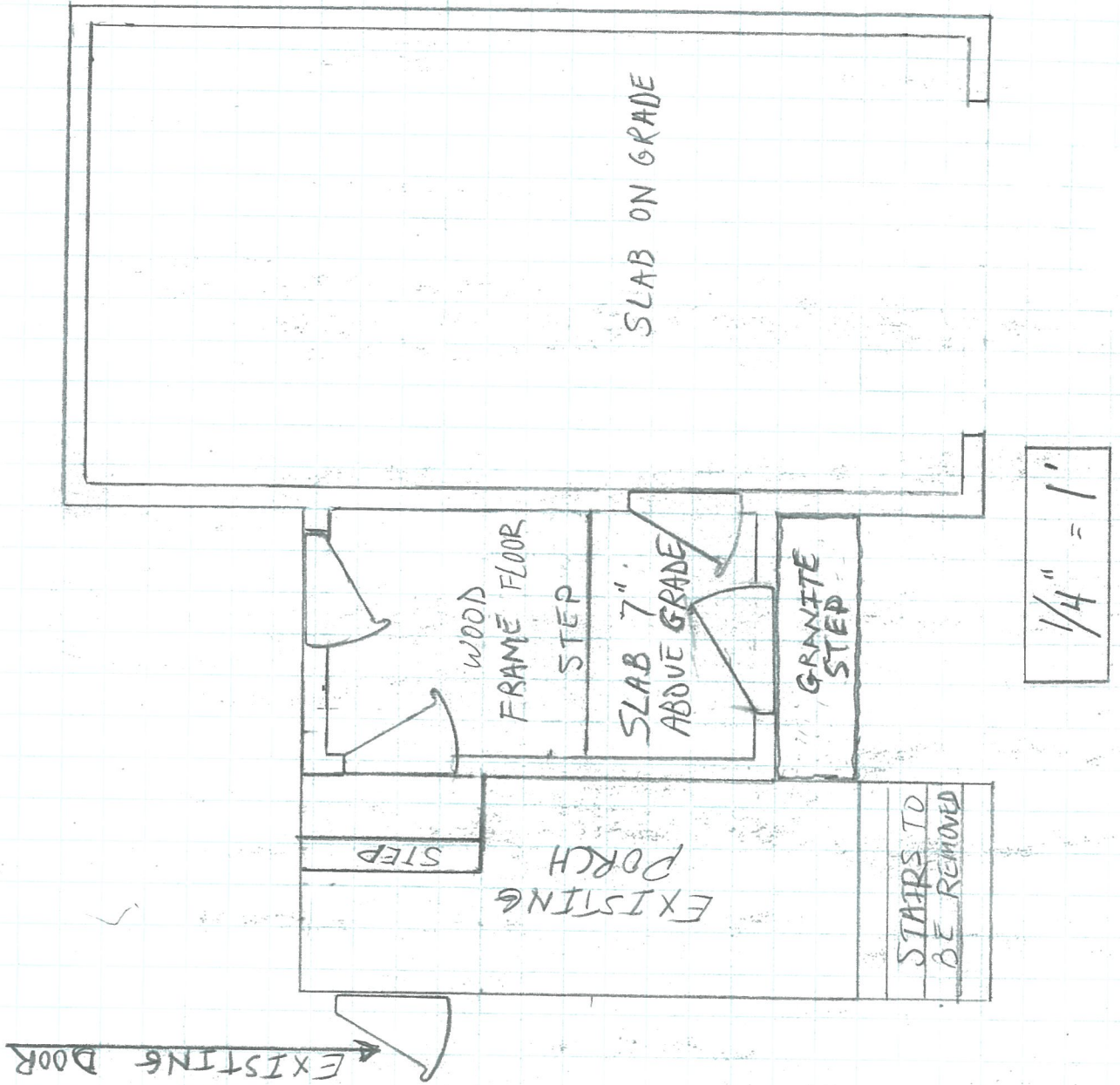
⑤ 51.35 ft³

⑥ + 34.23 ft³

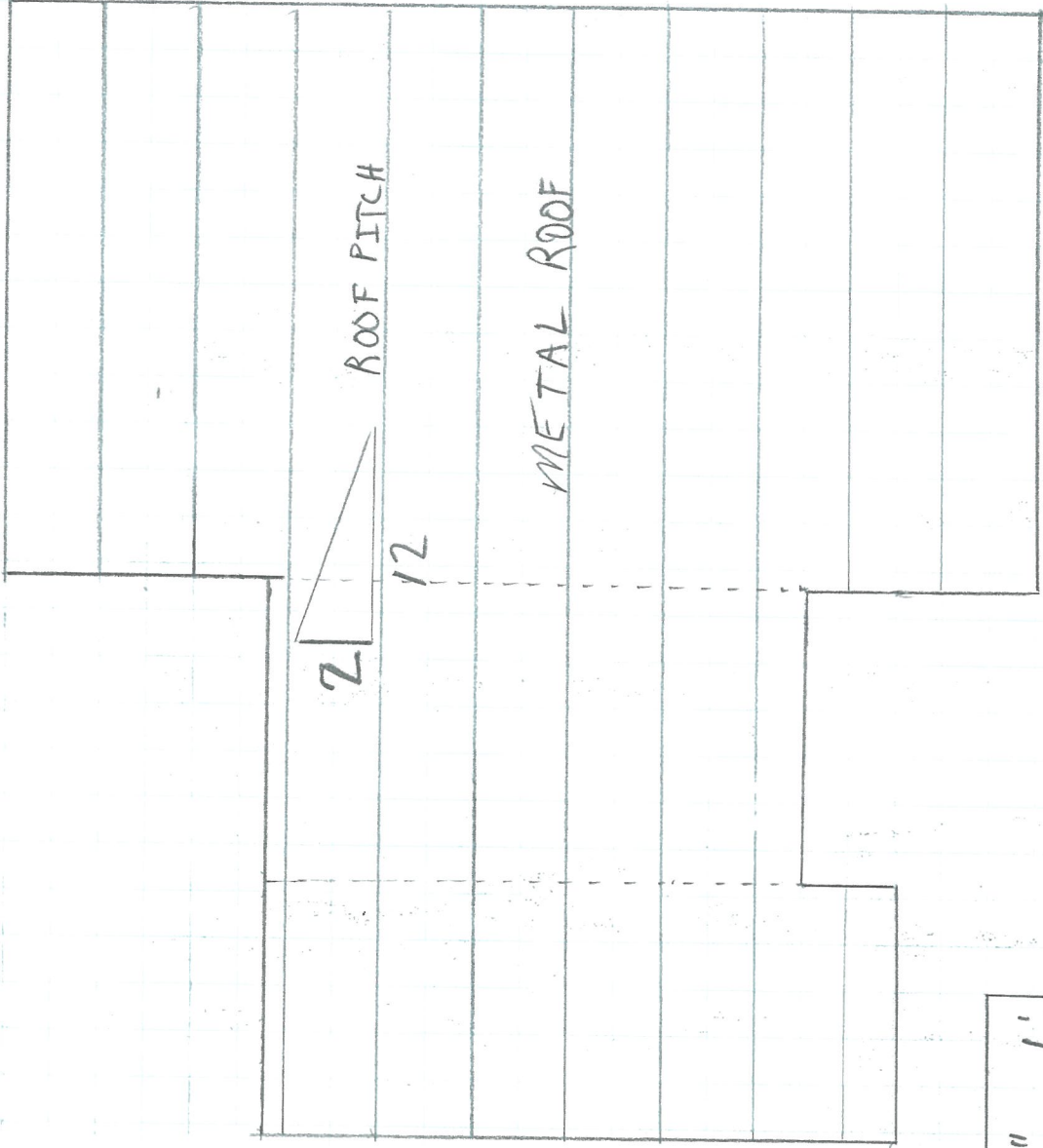
PROPOSED = 3523.4 ft³

ALLOWED = 3645 ft³

FLOOR PLAN



ROOF PLAN



$$\frac{1}{4}'' = 1'$$