

1.

Trotman Developments LLC

28 Whittier Street, Portland.



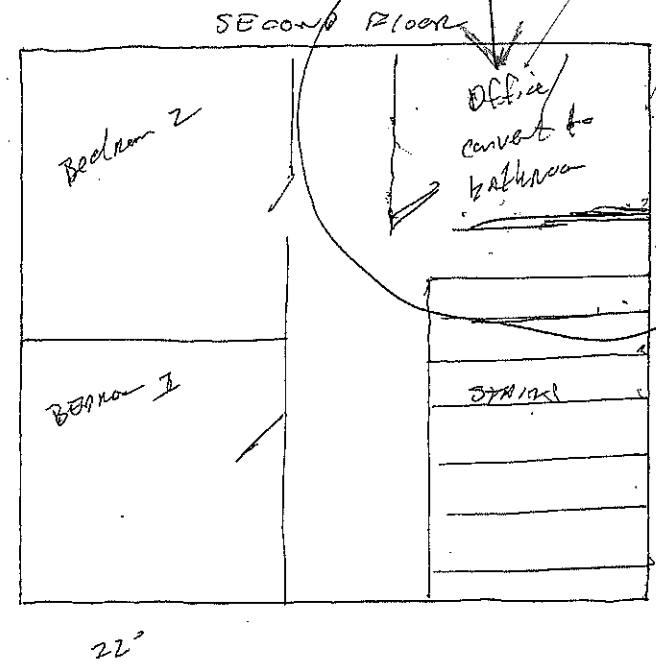
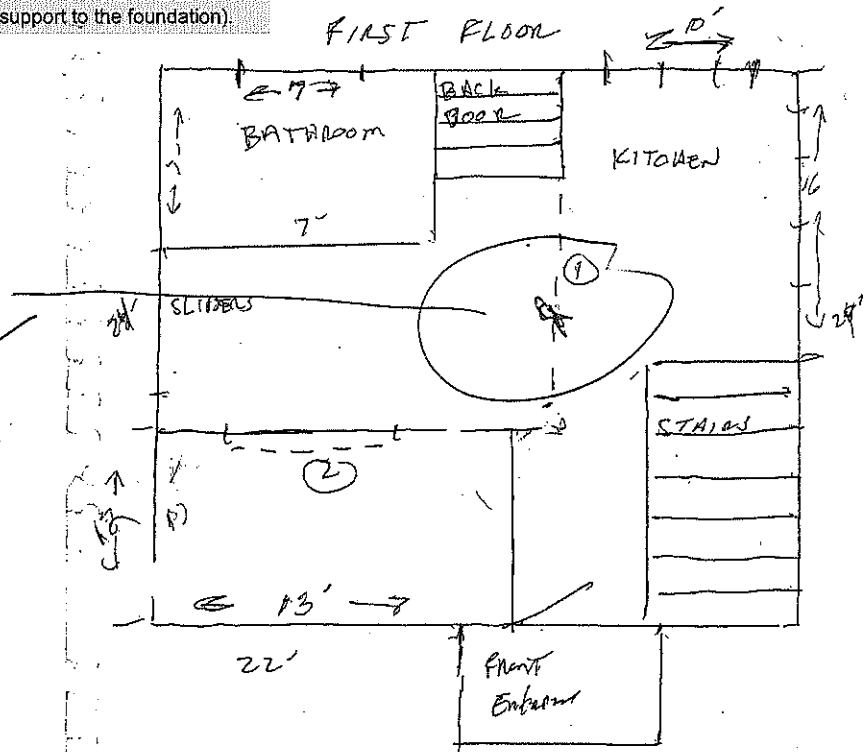
Reviewed for Code Compliance  
Permitting and Inspections Department  
Approved With Conditions

Please provide specific information about each structural alteration (show each new or replacement beam, header, joist and post with sizes, spans and connections from the highest level with continuous support to the foundation).

Please show plumbing fixture layout and required clearances as per UPC Sections 402.5 and 408.6

Please show glazing compliant with IRC Section R308.4.5.

Spec by  
2/16  
2/18



1. Remove dotted wall open up KITCHEN to DINING ROOM
2. Enclosed second dotted lines to create first floor bedroom
3. Complete upgrade of kitchen & bath.

4. Complete upgrade of Wiring to Code
5. Complete plumbing upgrade as needed to code
6. Upgrade of windows (value efficient) (not all)
7. Insulation / sheetrock.
8. Smoke, Coz. to Code

Q



03/14/2019

3

Please provide specific information about each structural alteration (show each new or replacement beam, header, joist and post with sizes, spans and connections from the highest level with continuous support to the foundation).

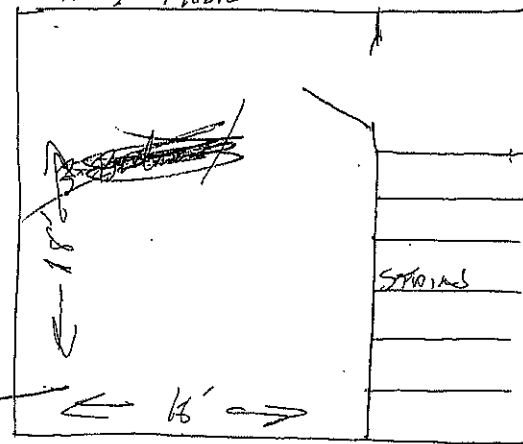
Not doing this now

Please show sleeping room window sizes compliant with Emergency Escape and Rescue Openings (egress windows).  
Provide dimensions of clear openings of windows in sleeping rooms (with normal window operation, measure the available space of the opening):  
1. Clear opening width (20" minimum)  
2. Clear opening height (24" minimum)  
3. Clear opening area (width x height)  
4. Bottom of clear opening height above the floor (44" maximum).

Please provide accurate stair plan to third floor showing:  
1. Head room (measured vertically from any tread nosing or landing)  
2. Stairway width and landing dimensions  
3. Riser height  
4. Tread depth  
5. Winder or curved tread dimensions (if existing)  
6. Guard height (measured vertically from tread nosing)  
7. Handrail height (measured vertically from tread nosing).

28 Whittier Street, Portland Me

Third Floor



9. Third Floor updated Shabroch, lighting.

10. The house is being <sup>updated</sup> with ~~new~~ <sup>minimal</sup> ~~change~~ <sup>change</sup> to existing structural.

in Materials to be used 2x4, 2x6, 2x10, 2x12, shabroch  
metallic, post 4x4, supports.

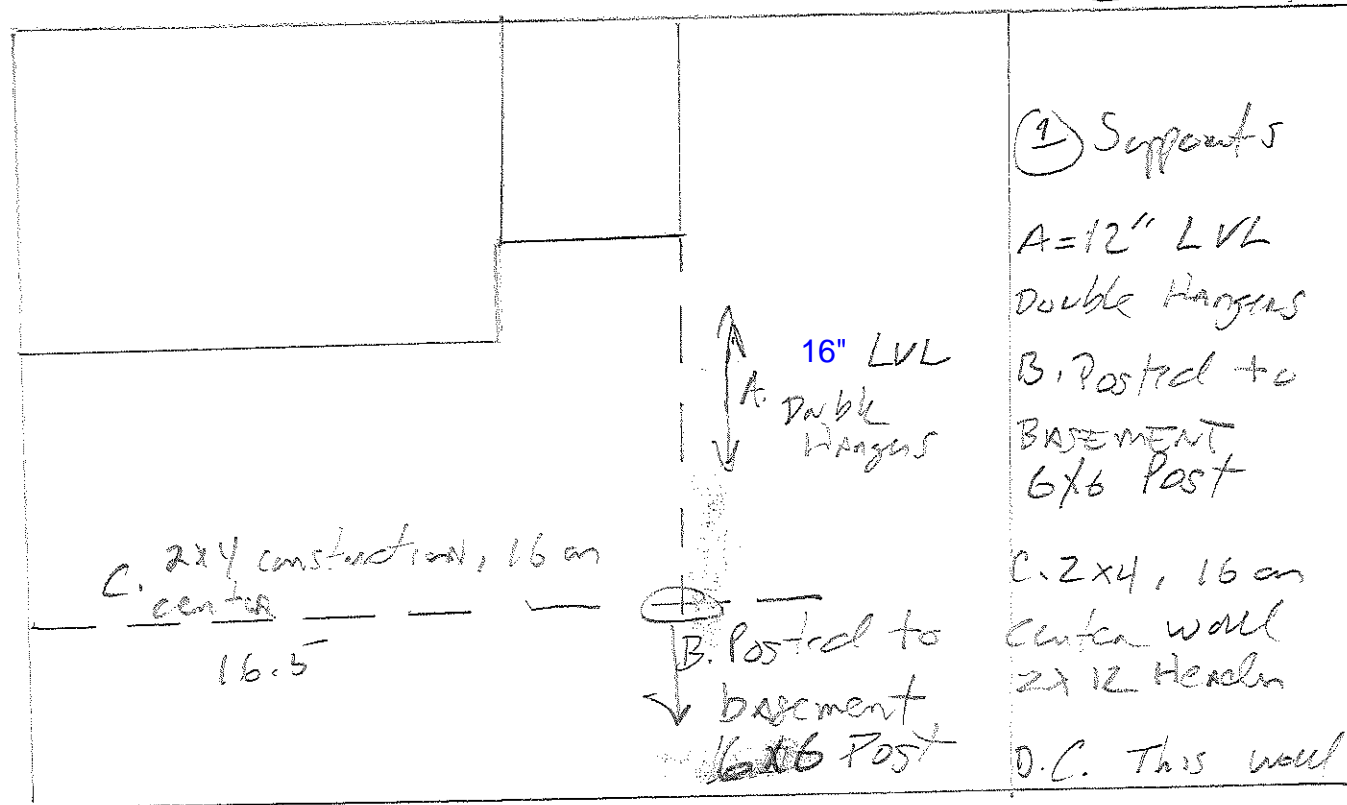
Re claim make a plan approved



# TROTMAN Development LLC

## FIRST FLOOR

1.



① Supports  
 A=12" LVL  
 Double Hangers  
 B. Postcd to  
 BASEMENT  
 6x6 Post

C. 2x4, 16 on  
 center wall  
 2x12 Header

D.C. This wall

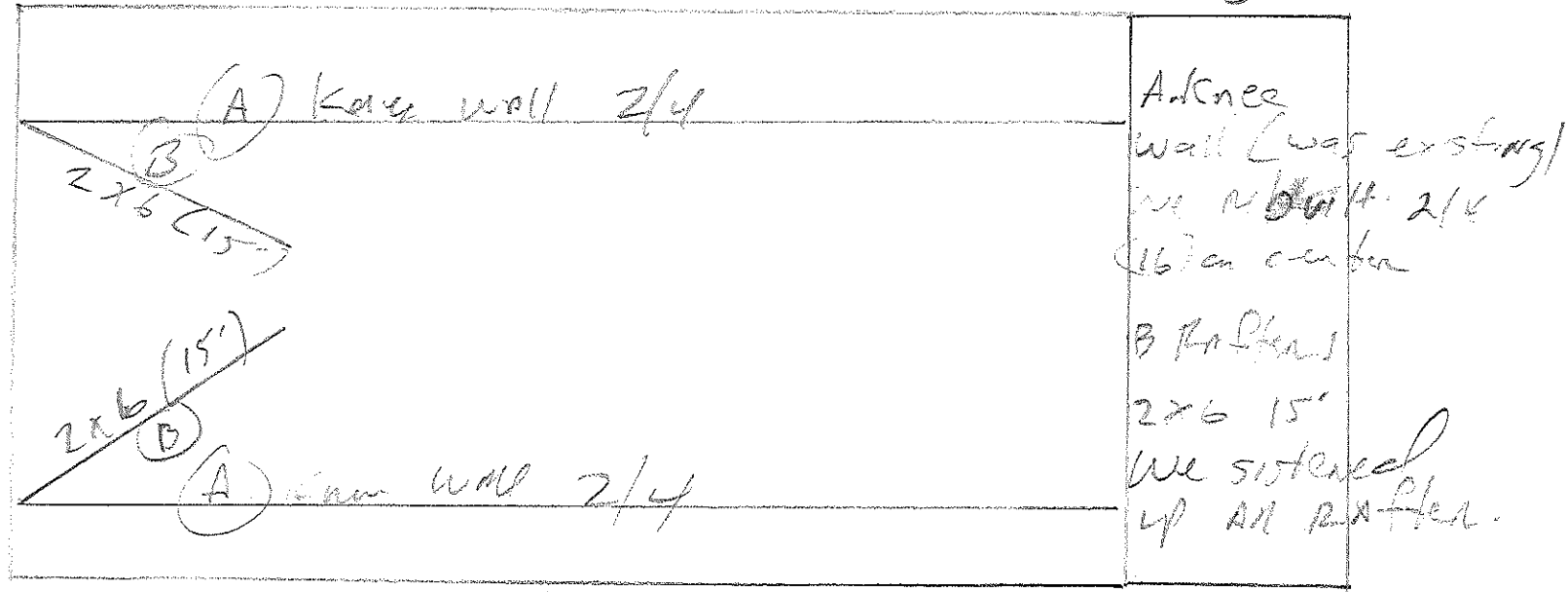
didn't exist it  
 was a ~~larger~~  
 opening we closed  
 up. Its stronger



28 Winter Street 3rd Floor

STAYING STORAGE / NO BEAM

3.



- ① Knee rebuilt
- ② Rafters all gables 2x6 = 15'
- ③ No Bedroom / Staying Storage



# Trotman Development LLC

## 28 Whitford St. Bathroom

