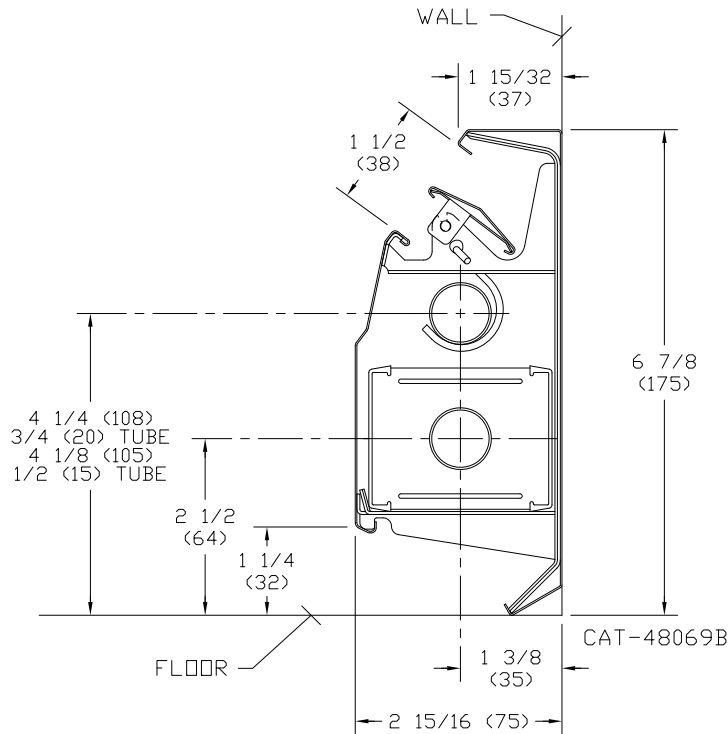


PETITE 7

Submittal Data

Baseboard Radiation

- | | | |
|---|--|--|
| <p>ENCLOSURE:
STYLE : "Petite 7"</p> <p>COLOR: White</p> <p>FRONT: 24 Ga. Roll Formed
Prepainted Steel</p> | <p>BACKPLATE: 24 Ga. Roll Formed
Prepainted Steel</p> <p>DAMPER VANE: Roll Formed
Prepainted Steel</p> <p>ELEMENT:
TYPE: Cu/Al Mechanically
Expanded
Flared One End</p> | <p>BRACKETS: Die Formed 18 Ga.
Prepainted Steel</p> <p>SLIDE SHOES: High Temperature
Nylon Snap On
Front and Back</p> <p>ACCESSORIES: All overlapping
with Snap Fit and
Baked Enamel Finish</p> |
|---|--|--|



NOTE: DIMENSIONS IN "()" ARE SHOWN IN MILLIMETERS.

RATINGS

AVERAGE HOT WATER TEMPERATURE OF - BTU/HR/LIN. FT										
Model	GPM	120°	130°	140°	150°	160°	170°	180°	190°	200°
P77A 3/4"	4	225	285	350	410	480	540	600	670	730
	1	215	270	330	390	450	510	570	630	690
P75A 1/2"	4	235	290	355	420	490	560	620	690	760
	1	220	275	335	400	460	530	590	650	720



260 North Elm St., Westfield, MA 01085
(413) 564-5545 Fax: (413) 572-3764
www.sterlingheat.com



PROJECT: _____ DATE: _____
 LOCATION: _____
 ARCHITECT: _____
 ENGINEER: _____
 CONTRACTOR: _____
 PO NUMBER: _____

PETITE 7

Submittal Data

Baseboard Radiation

CORRECTION FACTORS

If calculated water flow through a baseboard is greater than the standard flow rate (1 GPM), the rating of that unit may be increased by multiplying the standard water rating at 1 GPM by the factor shown for the actual flow rate.

WATER FLOW CORRECTION FACTORS

G.P.M.	Heat Output Factor	Pressure Drop – Millinches Per Ft. Copper Element Tube Size	
		3/4"	1/2"
1.0	1.000	47	260
1.5	1.016	96	520
2.0	1.028	157	850
2.5	1.038	230	1270
3.0	1.045	320	1730
3.5	1.051	420	2290
4.0	1.057	525	2880
4.5	1.062	650	3600
5.0	1.067	775	4300
6.0	1.074	1060	5900

SPECIFICATION

Furnish and install where shown on all plans/drawings, Petite 7 Finned Tube Enclosure and Elements as described or approved equal of both quality and BTU capacity.

The baseboard panel radiator enclosure, as called out Petite 7, will be manufactured from 24-gauge pre-painted bonderized C.R.S. All lateral bends are to be roll formed to ensure continuity of all adjoining enclosures and accessories. The enclosure lengths are to be provided in 12 inch increments from 2 feet through 8 feet long and 10 foot lengths. The front panel is to be fully engaged onto mounting brackets engaged with the back panel. Splice plate and damper joiner are to be used where two pieces of enclosure are adjoining each other in a run. These are to be included with all 5', 6' and 8' assembly packages.

All accessories will be die formed cold rolled steel and finished with a baked enamel finish. The accessories will overlap the installed enclosure and are to provide adjustment for make-up in the installed runs of enclosure. The accessories will extend to the floor. The accessories are to be enclosure height.

The brackets are to be of a one piece, die formed construction. The material is to be 18-gauge pre-painted bonderized C.R.S. The bracket is to be self locating for vertical positioning at installation. The bottom horizontal leg is to snap into bottom bend of the enclosure and is to support the element where slide shoes are located. Two high temperature nylon snap-on slide shoes are to be placed at the front and rear of element to prevent contact between fin and enclosure during expansion and contractions.

All elements are to be of the mechanically expanded type to ensure that proper fin to tube bonding is maximized. Copper/Aluminum elements are to be provided with one end mechanically swaged (flared) for proper assembly.

In the interest of product improvement, we reserve the right to make changes without notice.