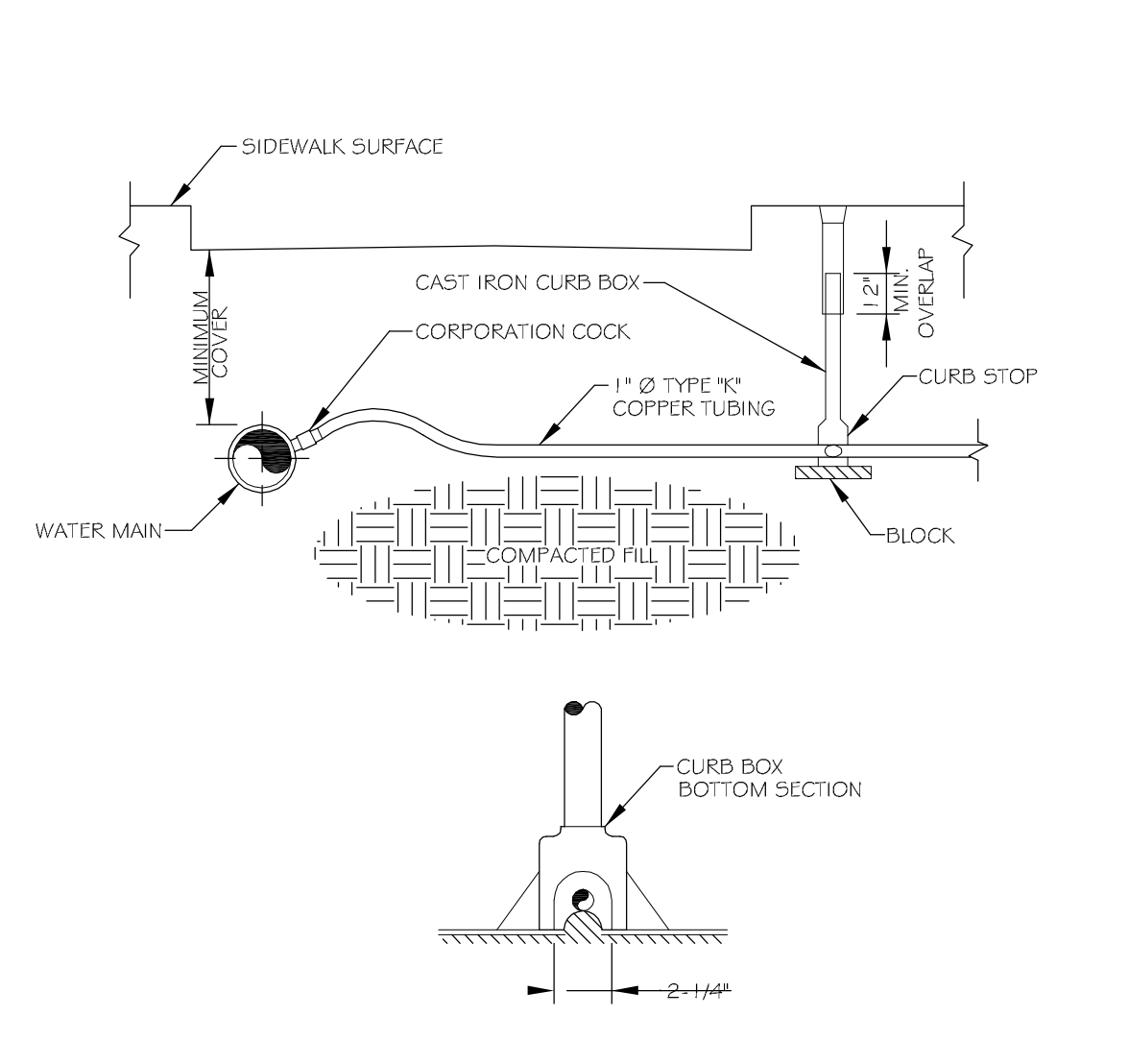
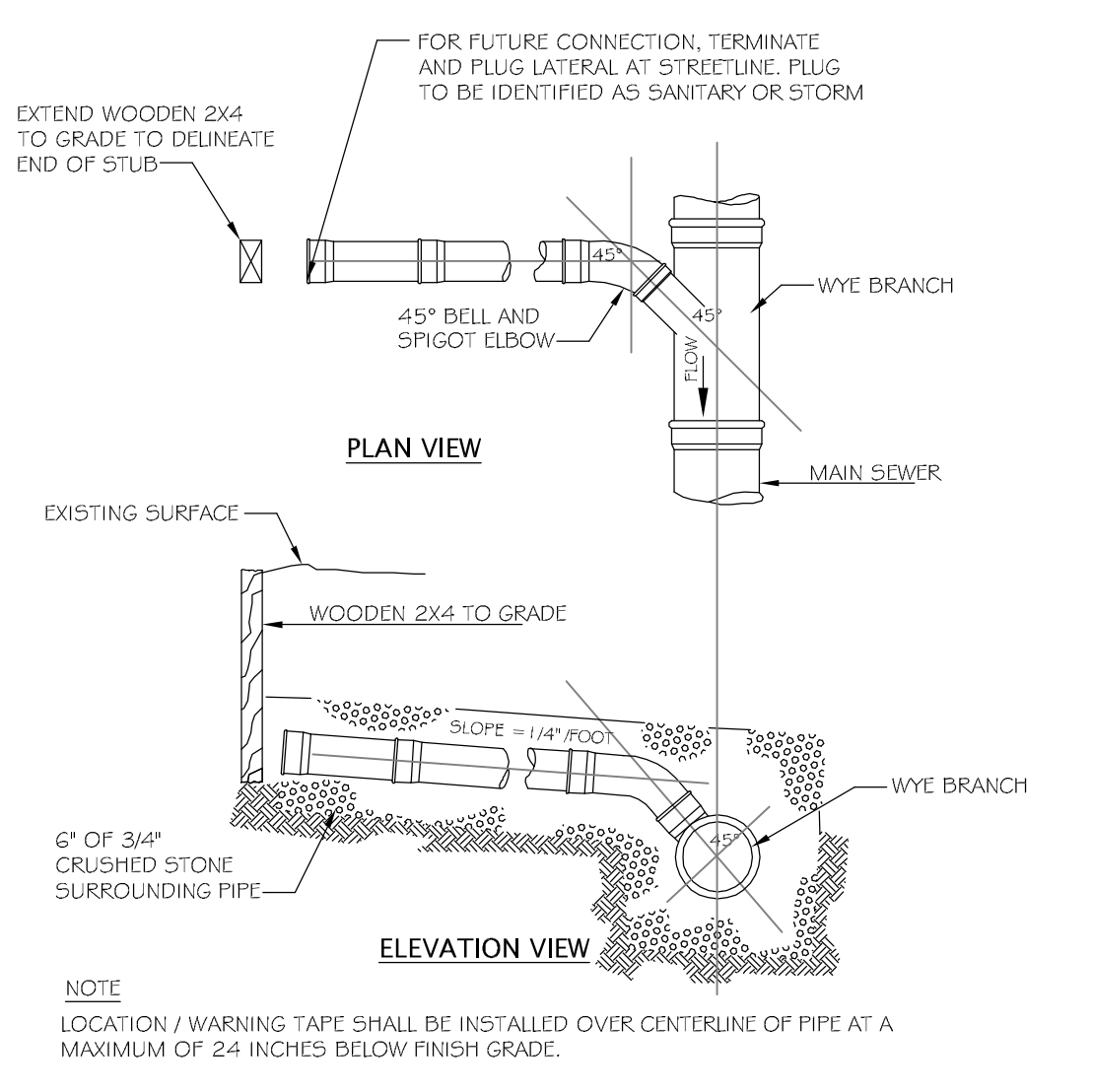


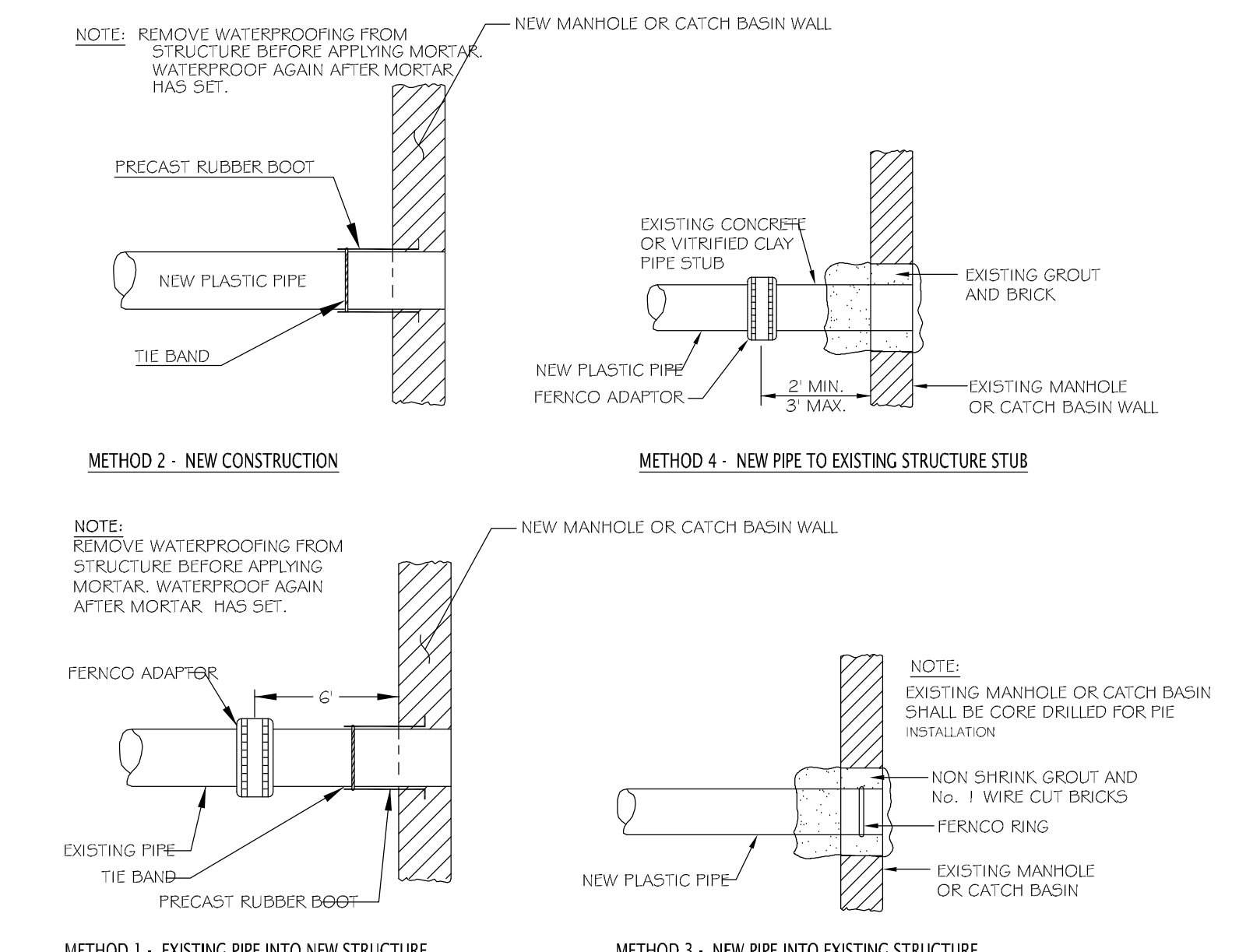
1 TYPICAL PIPE TRENCH INSTALLATION
NOT TO SCALE



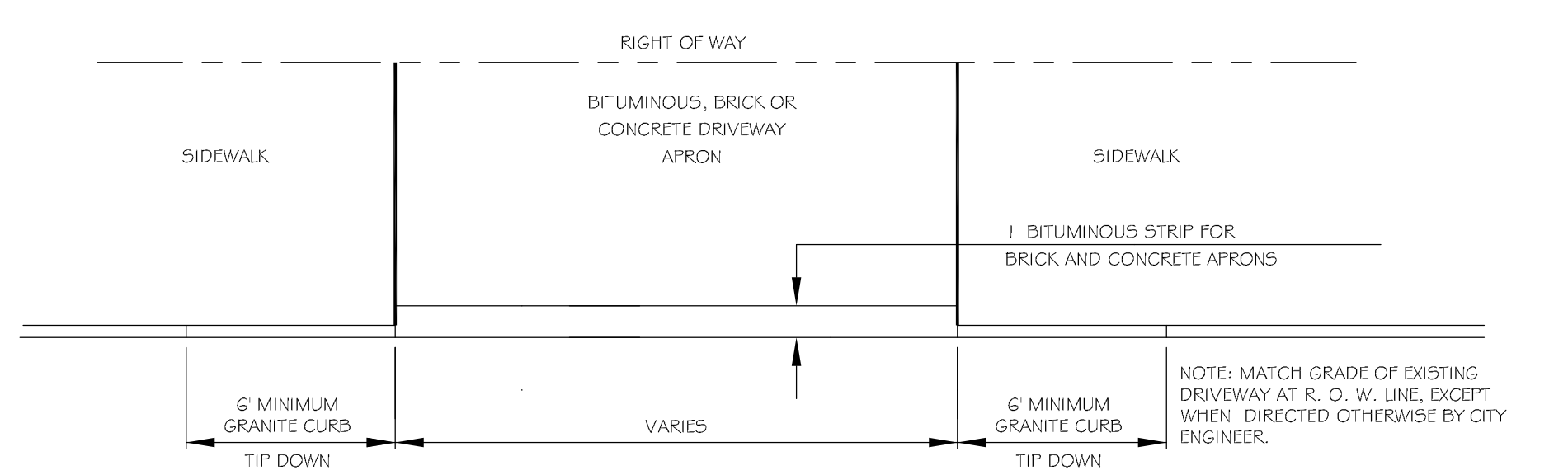
4 TYPICAL COPPER HOUSE SERVICE DETAIL
NOT TO SCALE



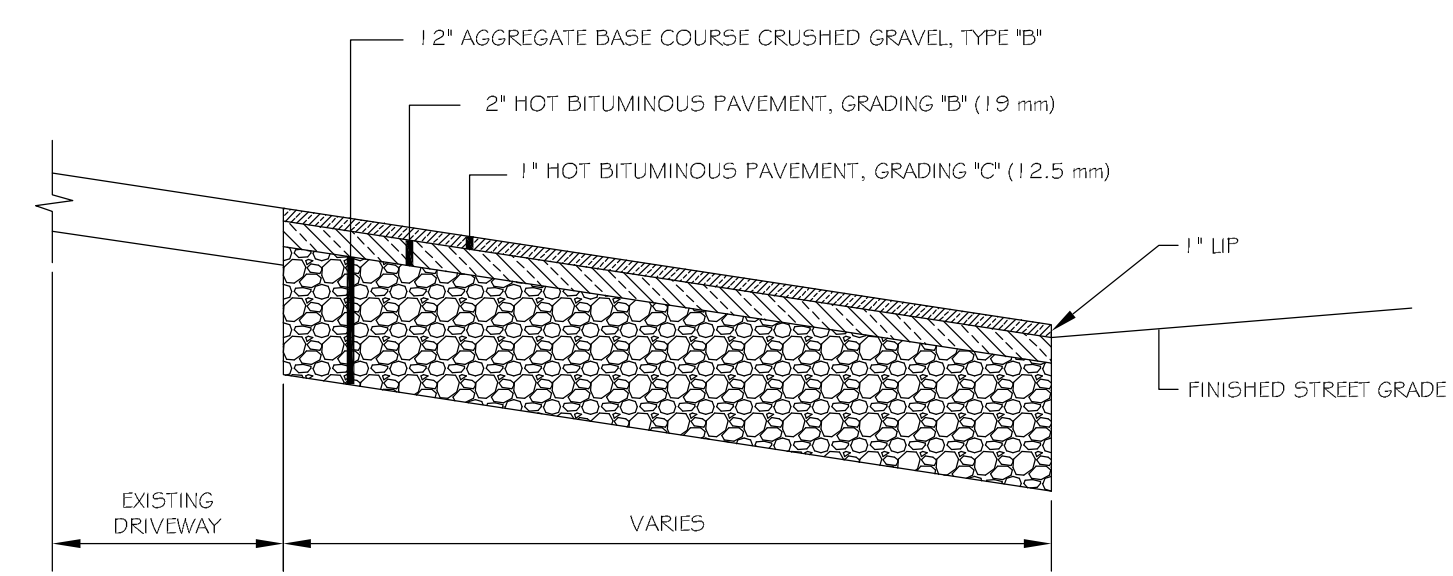
7 TYPICAL LATERAL WYE CONNECTION
NOT TO SCALE



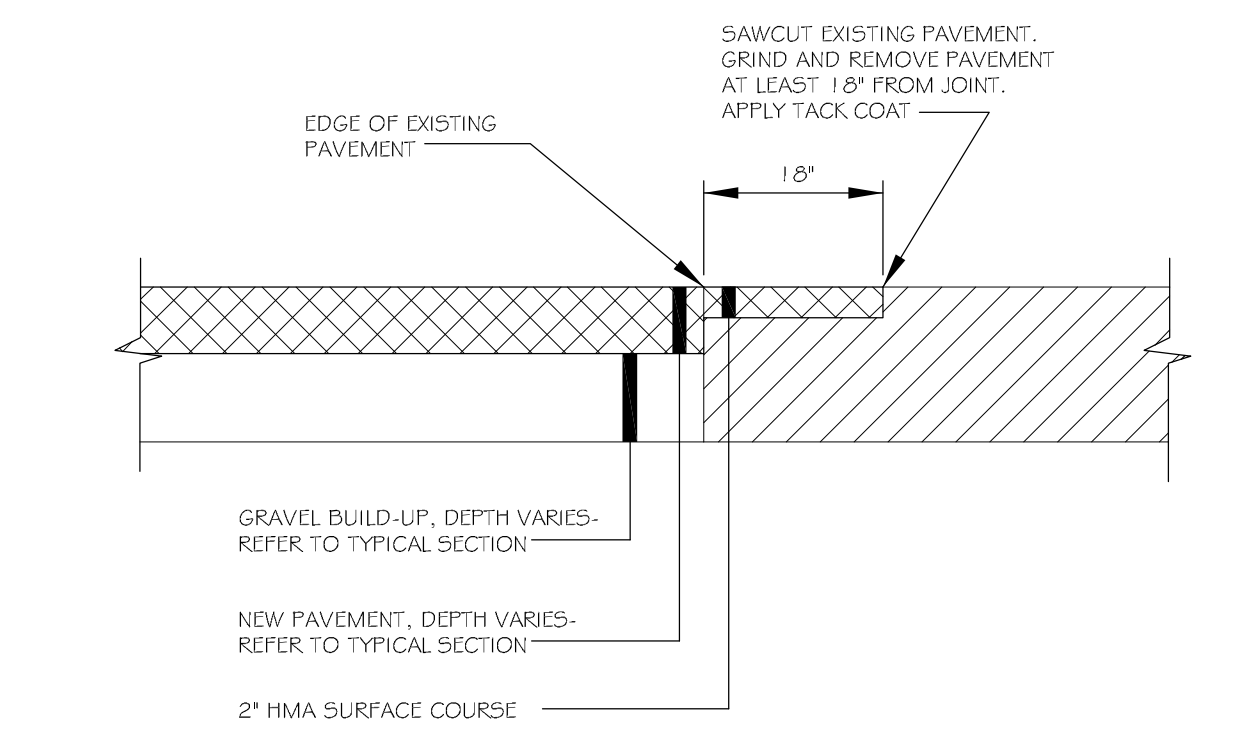
10 PIPE CONNECTION DETAILS
NOT TO SCALE



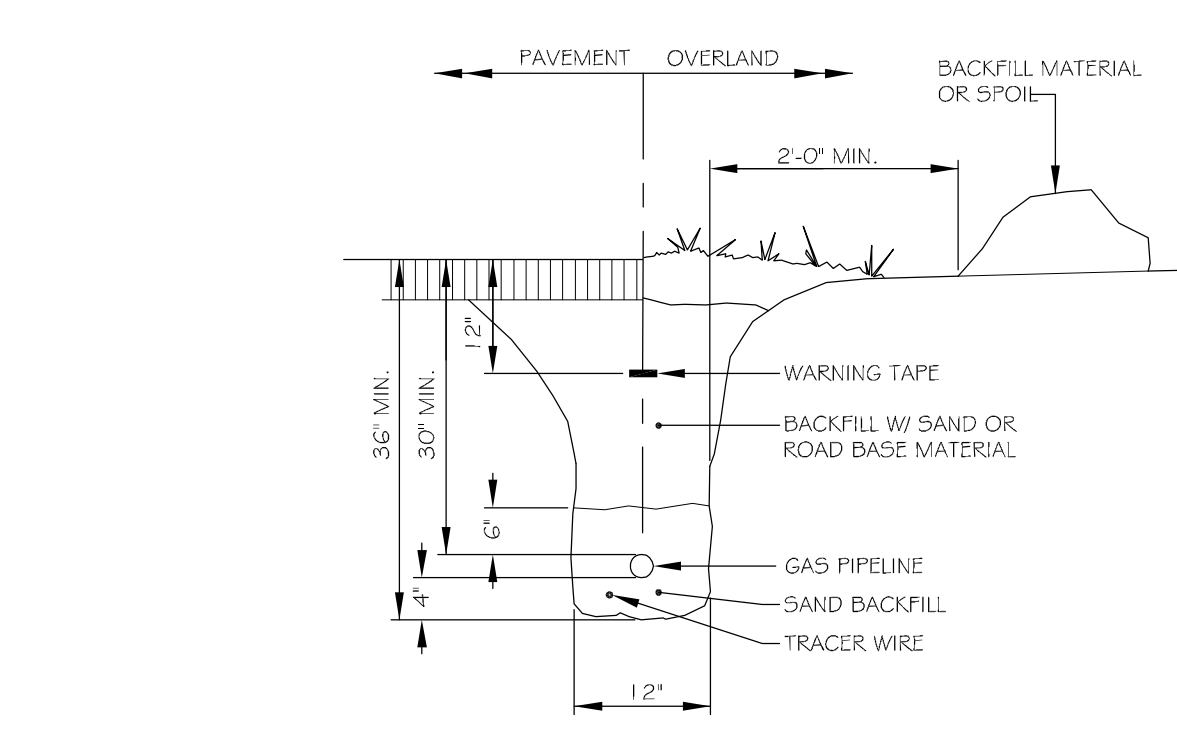
2 DRIVEWAY APRON LAYOUT
NOT TO SCALE



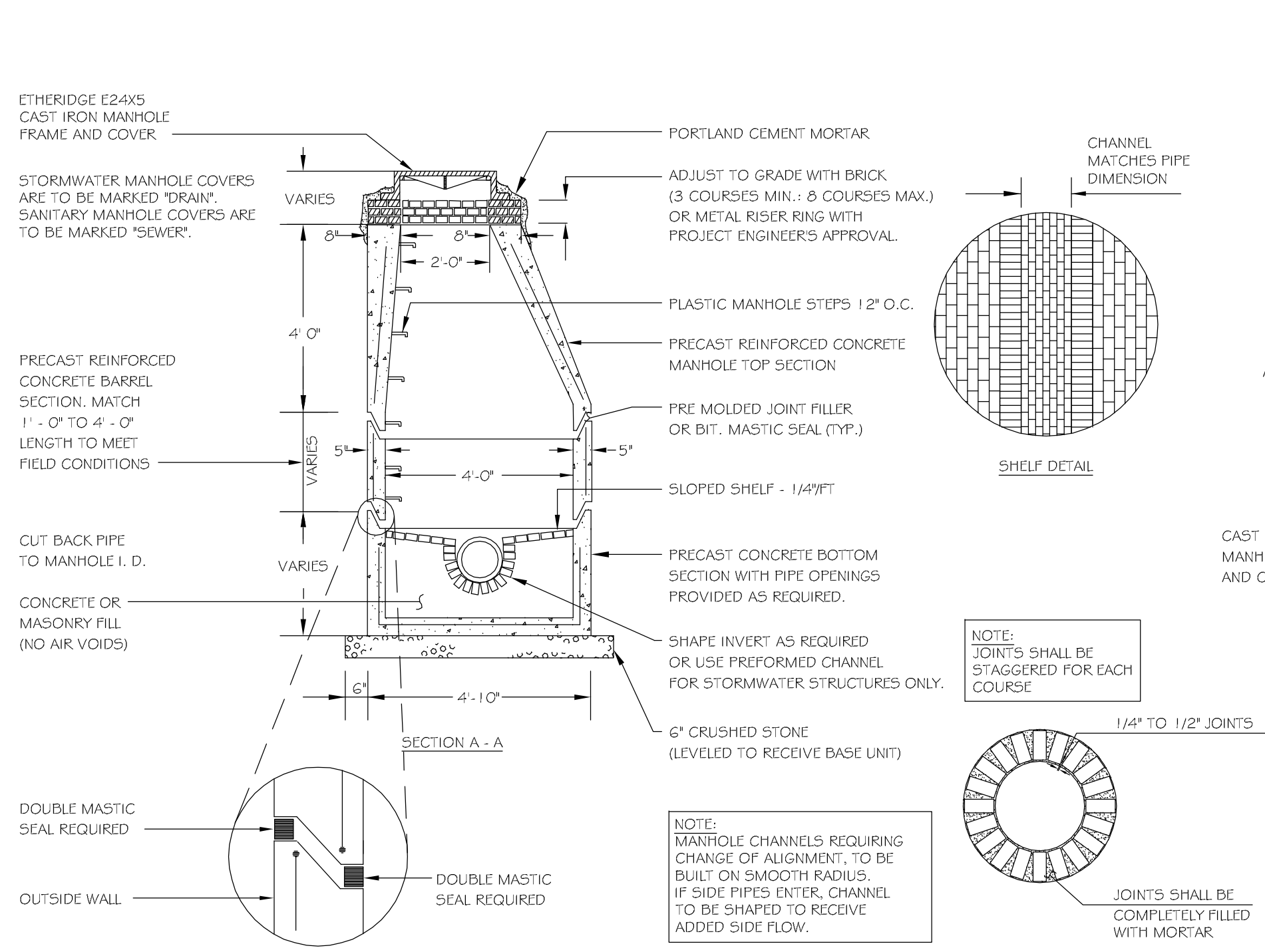
5 BITUMINOUS DRIVEWAY APRON
NOT TO SCALE



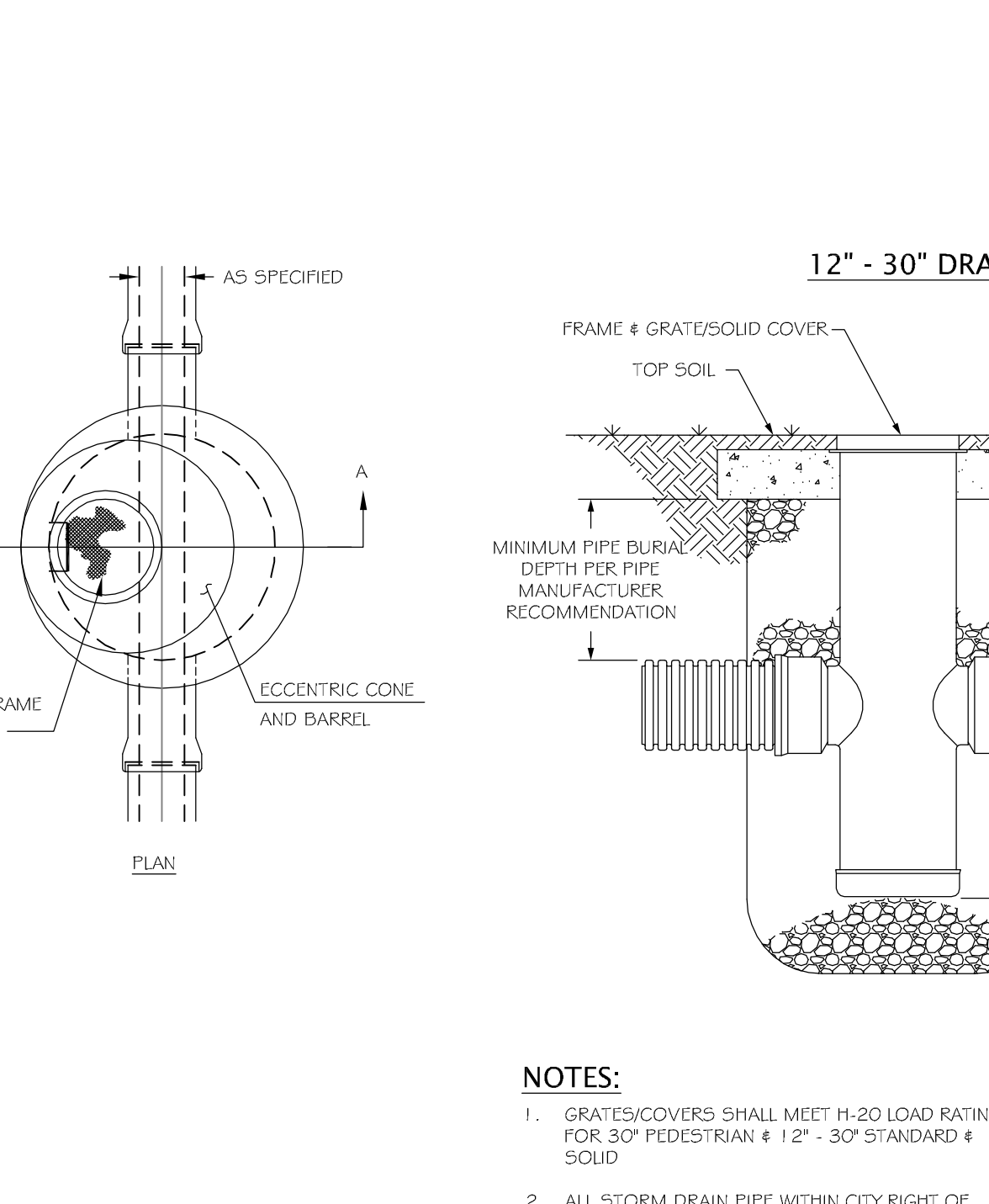
8 PAVEMENT BUTT-JOINT DETAIL
NOT TO SCALE



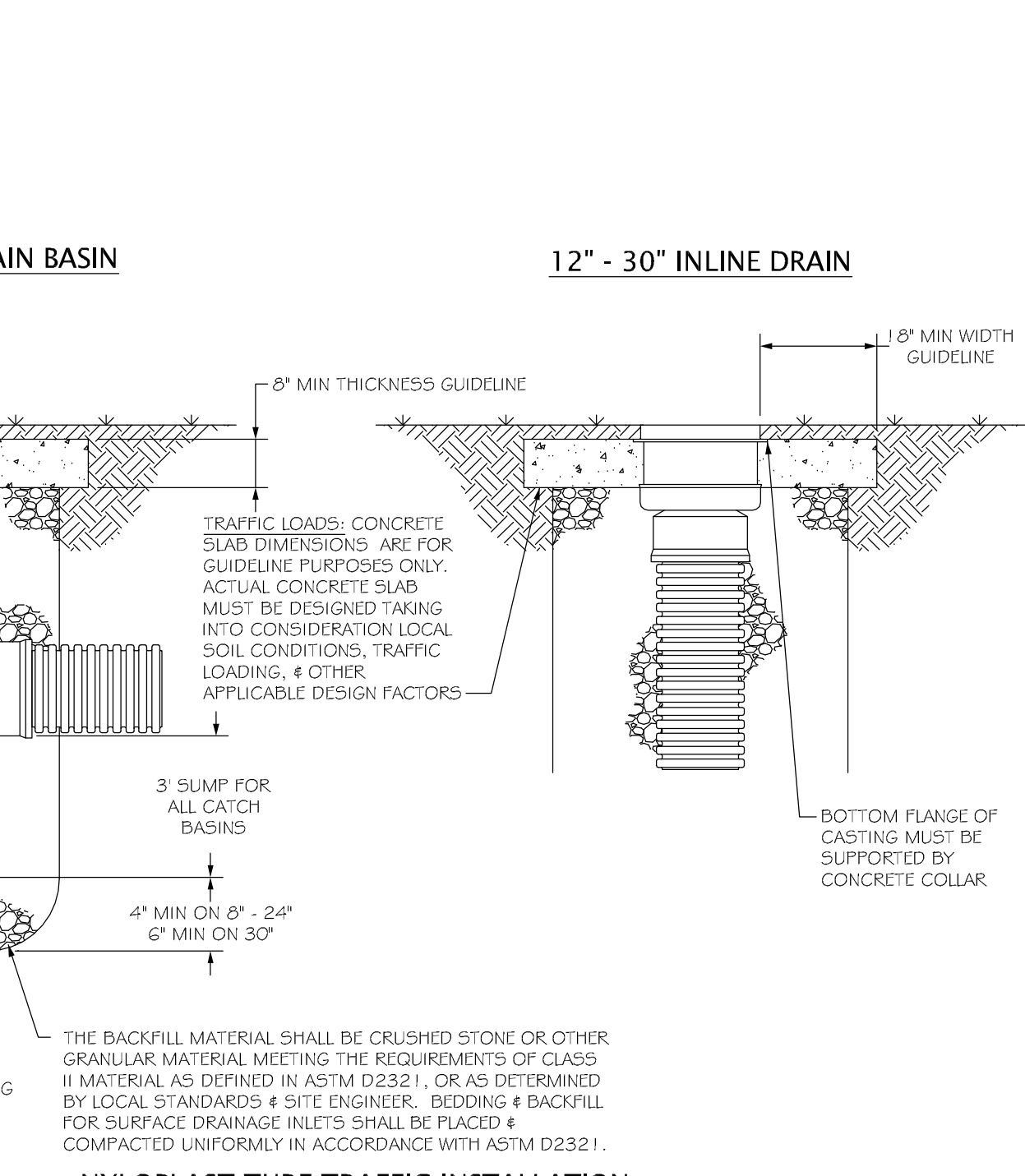
11 GAS PIPING TRENCH SECTION
NOT TO SCALE



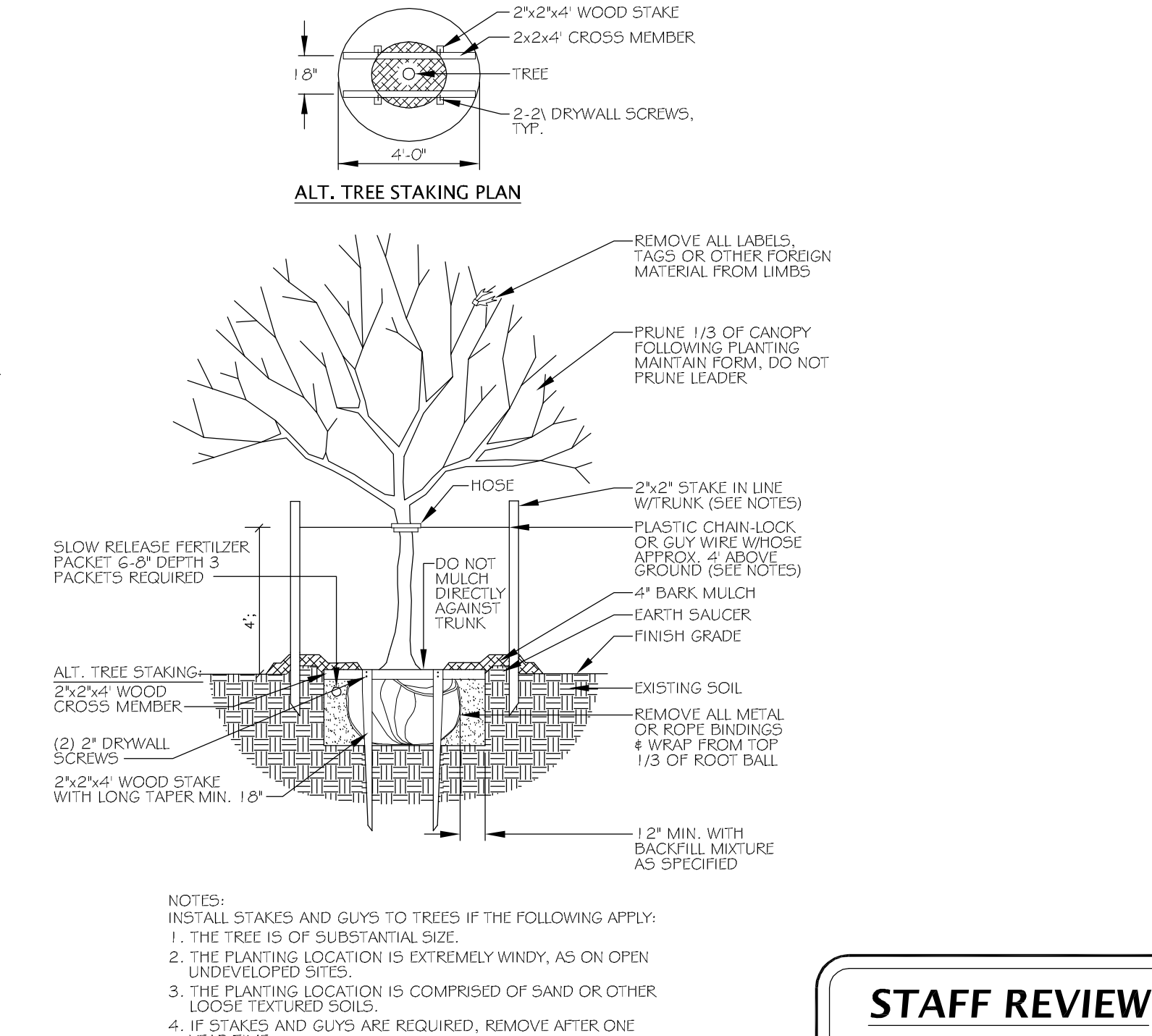
3 PRECAST CONCRETE MANHOLE
NOT TO SCALE



6 NYOPLAST FIELD INLET (By HANCOR)
NOT TO SCALE

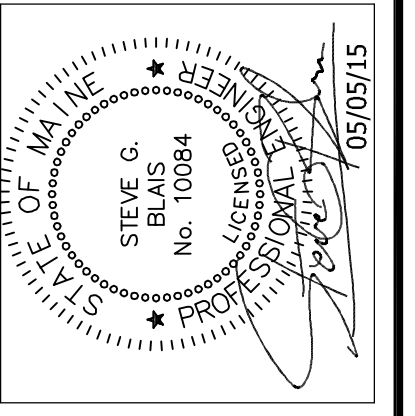


9 DECIDUOUS TREES
NOT TO SCALE



11 GAS PIPING TRENCH SECTION
NOT TO SCALE

REVISIONS	DATE	DESCRIPTION
No. 1.	05/05/15	REVISED PER CITY REVIEW



Blais civil engineers
780 BROADWAY, SO. PORTLAND, ME 04106 (207) 767-7300
© 2013 BLAIS CIVIL ENGINEERS, P.A.

SITE DETAILS
COPE SINGLE FAMILY
13 HODGINS STREET
PREPARED FOR:
STEVEN COPE
172 CONCORD STREET
PORTLAND, ME 04103

LATEST REVISION (SEE REV. BOOK):
DATE: MONTH DAY, 2013
DESIGNED BY: JV
DRAWN BY: MV
CHECKED BY: JV/SB
BCE PROJECT NO.: 12164

STAFF REVIEW
THIS DOCUMENT IS ISSUED FOR REVIEW PURPOSES ONLY. THE DATA SHOWN HEREON IS SUBJECT TO REVISION.
MAY 4, 2015

C-301