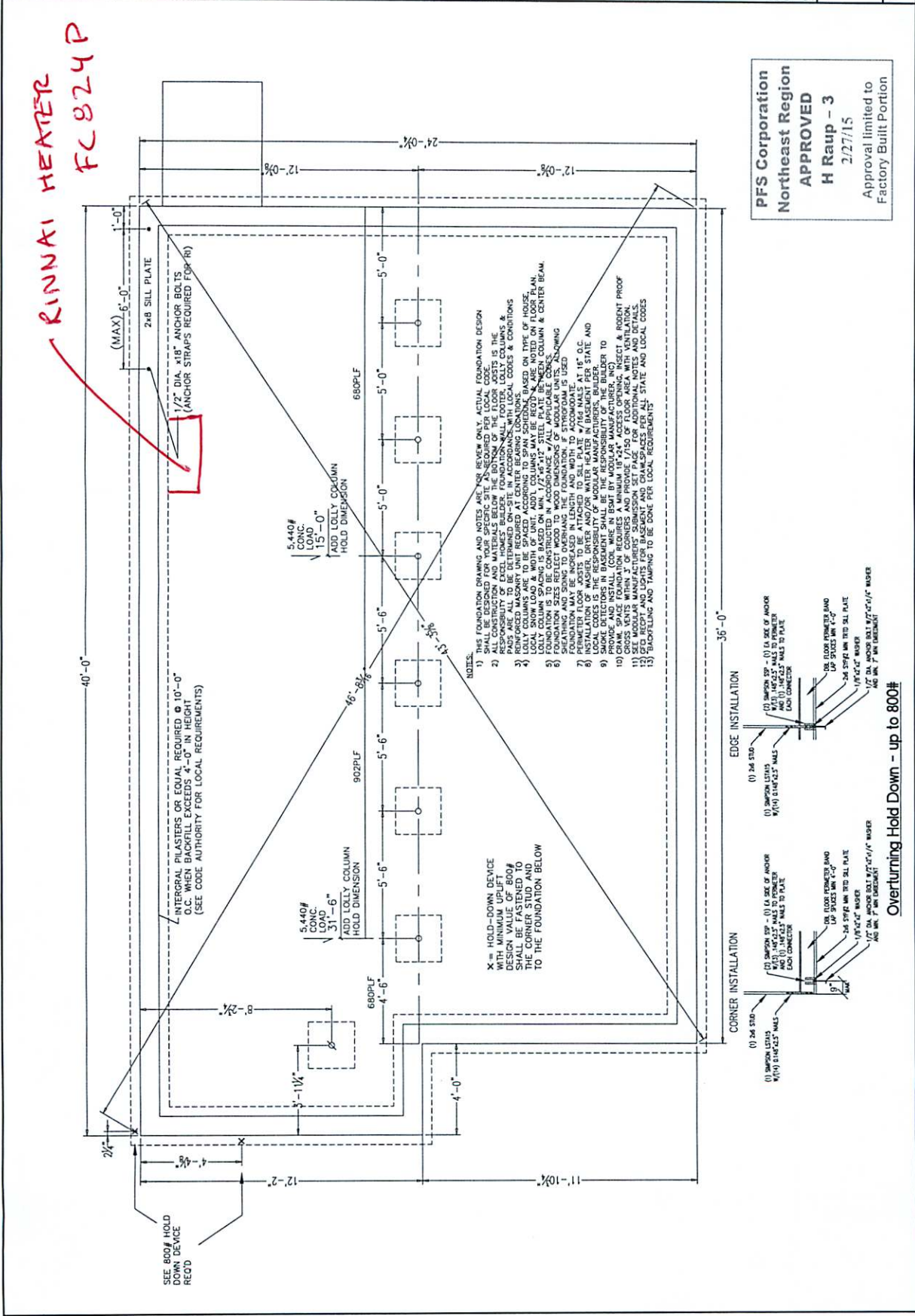


STATE: ME	PROJECT: Kim 4355
DATE: 03/08/15	DRAWN: SLS
BUILDER: MTR DEV., LLC	CHECKED: WMC
CUSTOMER/PROJECT: COPE	DESCRIPTION: FOUNDATION PLAN
<b>Keiser HOMES</b> Keiser Home Brand Built By Excel Homes of Maine.	SCALE: NTS
THIS DRAWING WAS EXTRACTED FROM APPROVED PLANS AND/OR APPROVED SYSTEMS DRAWINGS	SHEET: 5
NAME: _____ DATE: _____	
THE DRAWING AND DESIGN IS THE PROPERTY OF KEISER HOMES GROUP, LLC. ANY REPRODUCTION OF THE DRAWING OR DESIGN WITHOUT THE EXPRESS WRITTEN CONSENT OF EXCEL HOMES GROUP, LLC.	
ADJUSTMENTS MADE FOR CODE COMPLIANCE AND PRODUCTION CAPABILITY	
DRAWING MAY BE REVERSED	



**PFS Corporation**  
**Northeast Region**  
**APPROVED**  
**H Raup - 3**  
 2/27/15  
 Approval limited to  
 Factory Built Portion