


STATE	ME
FILE	Kim 4355
CDR	CSB
BUILDER	MTR DEV, LLC
CUSTOMER/PRODUCT	COPE
 Keiser Homes Built By Excel Homes of Maine.	
THIS DRAWING WAS EXTRACTED FROM APPROVED PLANS AND/OR APPROVED SYSTEMS DRAWINGS	
NAME	DATE
THIS DRAWING AND DESIGN IS THE PROPERTY OF KEISER HOMES GROUP, LLC. ANY REPRODUCTION OF THE DRAWING OR DESIGN WITHOUT THE WRITTEN CONSENT OF KEISER HOMES GROUP, LLC.	
ADJUSTMENTS MADE FOR CODE COMPLIANCE AND PRODUCTION CAPABILITY DRAWING MAY BE REVERSED	
DESCRPTION	
DATE	
NO	
DRAWING TITLE	
FIRST FLOOR PLAN	
SCALE:	NTS
SHEET:	3

MINIMUM INSUL R-VALUES	MAXIMUM U-FACTORS
CEILING	R-38
ROOF/CEILING	R-38
WALLS	R-19
FLOORS	R-19
ENTRANCE DOORS	.35
SPECIALTY DOORS	.45
WINDOWS	.35
SKYLIGHTS	.60

HOUSE TO BE BUILT OVER UNCONDITIONED SPACE. BUILDER IS RESPONSIBLE FOR PROVIDING INSULATION FOR THE 1ST FLOOR PER THE MAINE ENERGY SPECIFICATIONS. PROVIDE INSULATION AND INSTALL A DOOR SWEEP & WEATHER STRIPPING AT BASEMENT DOOR. EXCEL TO PROVIDE & INSTALL R-11 INSULATION IN WALLS AND R-19 INSULATION IN THE CEILING OF ANY BASEMENT STAIR ENCLOSURES.

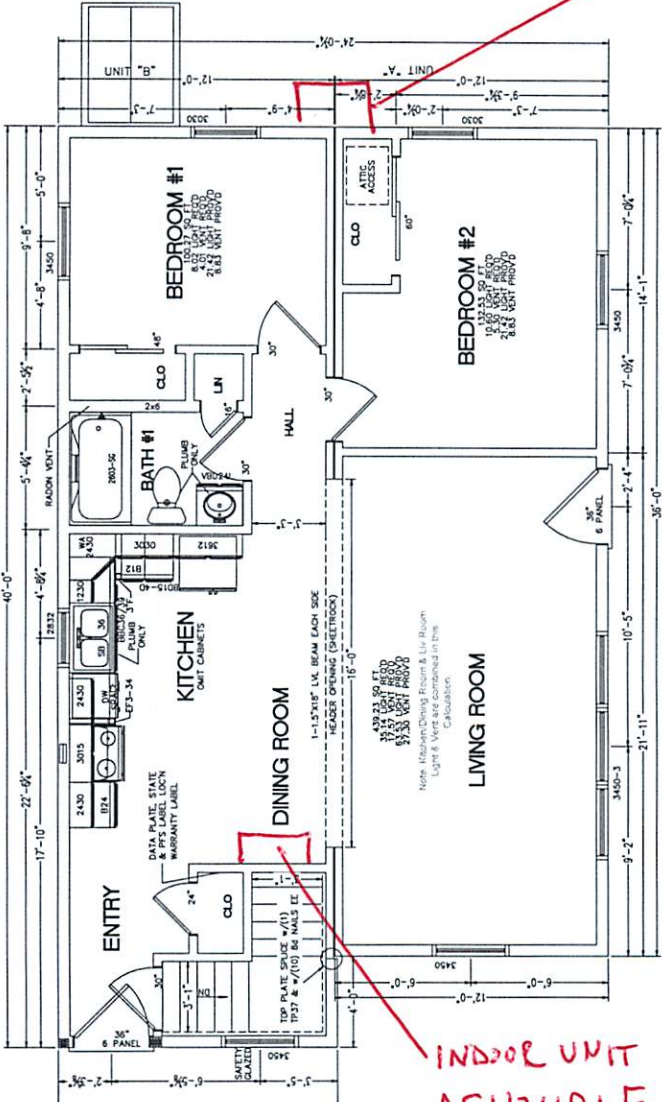
ADDITIONAL MAINE REQUIREMENTS

- SET MANUAL MUST BE IN RESIDENCE.
- COPY OF APPROVED SETS MUST BE IN RESIDENCE.
- WINDOWS REQUIRE ARJON UPGRADE TO MEET MAINE U-FACTOR REQUIREMENTS.

FOR THE STATE OF MAINE, FOR BASEMENT HEIGHTS FROM 7'-3" TO 8'-0" BASEMENT STAIRS ARE A COMPONENT OF THIS RESION WITH A MAXIMUM RISER HEIGHT OF 8-1/4"; A MINIMUM TREAD DEPTH OF 9" AND A 1" TREAD OVERLAP. TREADS WITH TREAD WIDTH LESS THAN 10" SHALL BE EQUIPPED WITH A SEPARATE FAN/ROOF WITH A MIN. RATING OF 100 CFM. EACH BATHROOM WILL BE EQUIPPED WITH A SEPARATE VENTILATING FAN THAT HAS A MIN. RATING OF 50 CFM AND SHALL BE INSTALLED AT A MAX. SOUND RATING OF 3.50NC. ALL RANGE & BATH FANS TO BE VENTED TO THE EXTERIOR.

PER MAINE ROOM REQUIREMENTS, THE ROOM PIPE SHALL BE A MIN. 12" ABOVE THE ATTIC SPACE AND HAVE A .35" HIGH BY 24" DIAMETER CLEARANCE FOR COMPLETION.

- MAINE**
- 2008 INTERNATIONAL RESIDENTIAL CODE - EXCEPTIONS
 - 2011 NFPA 31, STD FOR THE INSTALLATION OF OIL BURNING EQUIP
 - 2006 NFPA 70, NATIONAL ELECTRICAL CODE
 - 2006 NFPA 72, NATIONAL FIRE ALARM AND SIGNALING CODE
 - 2006 NFPA 780, NATIONAL FIRE PROTECTION ASSOCIATION STANDARD FOR LIGHTNING PROTECTION SYSTEMS
 - 2009 UNIFORM PLUMBING CODE #EXCEPTIONS
 - 2009 UNIFORM MECHANICAL CODE #EXCEPTIONS
 - 2011 NATIONAL ELECING CODE #EXCEPTIONS



WINDOW CALL SIZE	UNIT SIZE	ROUGH OPENING	TYPE	LIGHT FITMENT	FTL	U-VALUE
2832	31-1/2" x 37-1/2"	32-1/2" x 38-1/2"	SH 0100 NC	67.3	2.9	0.30
3330	35-1/2" x 35-1/2"	38-1/2" x 38-1/2"	SH 6100 NC	7.23	3.31	0.30
3430	38-1/2" x 38-1/2"	40-1/2" x 40-1/2"	SH 0100 NC	14.2	6.1	0.30

NOTE: SWEET GLAZING TO BE PROVIDED FOR WINDOWS IN HAZARDOUS LOCATIONS
 NOTE: WINDOWS ARE NRC RATED
 *LET'S EXPRESS REQUIREMENTS

- 6'-11 1/2" HEADER HEIGHT
- NOTES:
- 2x6 EXT WALLS @ 24" O.C./2x4 MARR WALLS @ 24" O.C. (EXCEPT AS NOTED)
 - 8'-0" CLG HT.
 - 2x6 SOFFIT FLOOR JOISTS @ 16" O.C.
 - 2x6 FLOOR JOISTS @ 16" O.C.
 - ALSO SEE NEW CONSTRUCTION 0100 SERIES SINGLE, HUNG WINDOWS BASED ON <100 MPH WIND LOAD & EXPOSURE "B"
 - SITE LOCATION: PORTLAND, ME; CUMBERLAND COUNTY; 50 PSF GROUND SNOW LOAD
 - BLUR INSTALLED HEATING SYSTEM DESIGN & MATERIAL SUPPLIED BY OTHERS

EXTERIOR UNIT
ASU24RLX FW
MOUNTED ON SIDE OF HOUSE w/ 500 LB WALL BRACKET

INDOOR UNIT
ASU24RLF

PFS Corporation
 Northeast Region
 APPROVED
 H Raup - 3
 2/27/15
 Approval limited to
 Factory Built Portion