

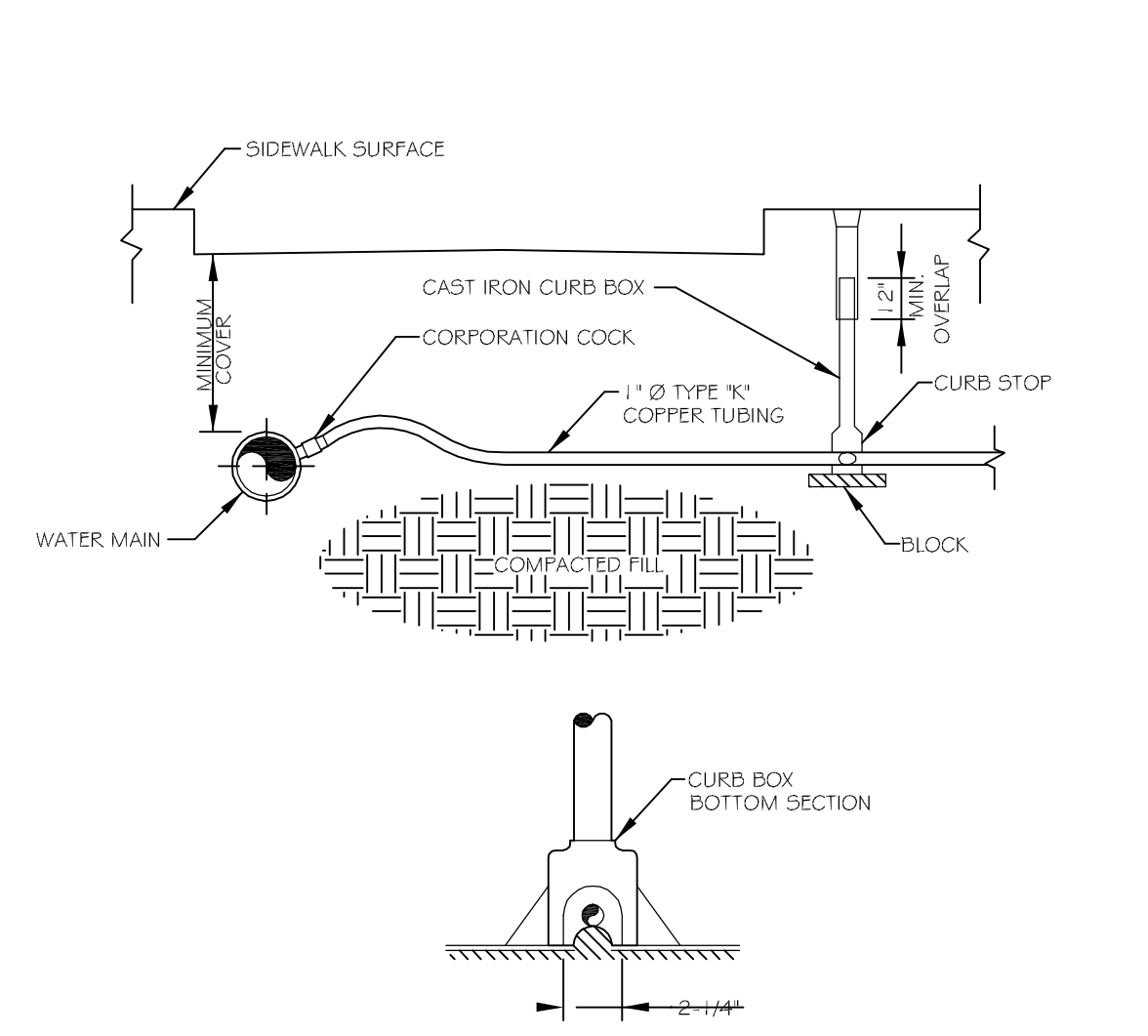
NOTES

- ALTERNATIVE CONSTRUCTION METHODS OR PAYMENT METHODS SHALL BE APPROVED IN ADVANCE BY THE CITY.
- IN PAVED AREAS, DEPTHS OF GRAVEL AND HOT MIX ASPHALT PAVEMENT SHALL MATCH THE GREATER OF EXISTING CONDITIONS OR THE REQUIREMENTS FOR THE CORRESPONDING STREET CLASSIFICATION. DIMENSION B SHALL BE SUFFICIENT TO ALLOW CRUSHED STONE BEDDING TO BE PLACED AND COMPACTED UNDER THE HAUNCHES OF THE PIPE, BUT IN ALL CASES DIMENSION B SHALL BE AT LEAST 9\"/>
- DIMENSION A IS THE MAXIMUM WIDTH ALLOWED FOR CALCULATING PAY QUANTITIES UNDER GRANULAR BORROW, CRUSHED STONE, STRUCTURAL EARTH EXCAVATION, AND STRUCTURAL ROCK EXCAVATION. DIMENSION A SHALL BE BASED ON PIPE DIAMETER, D, AS SET FORTH IN THE FOLLOWING TABLE.

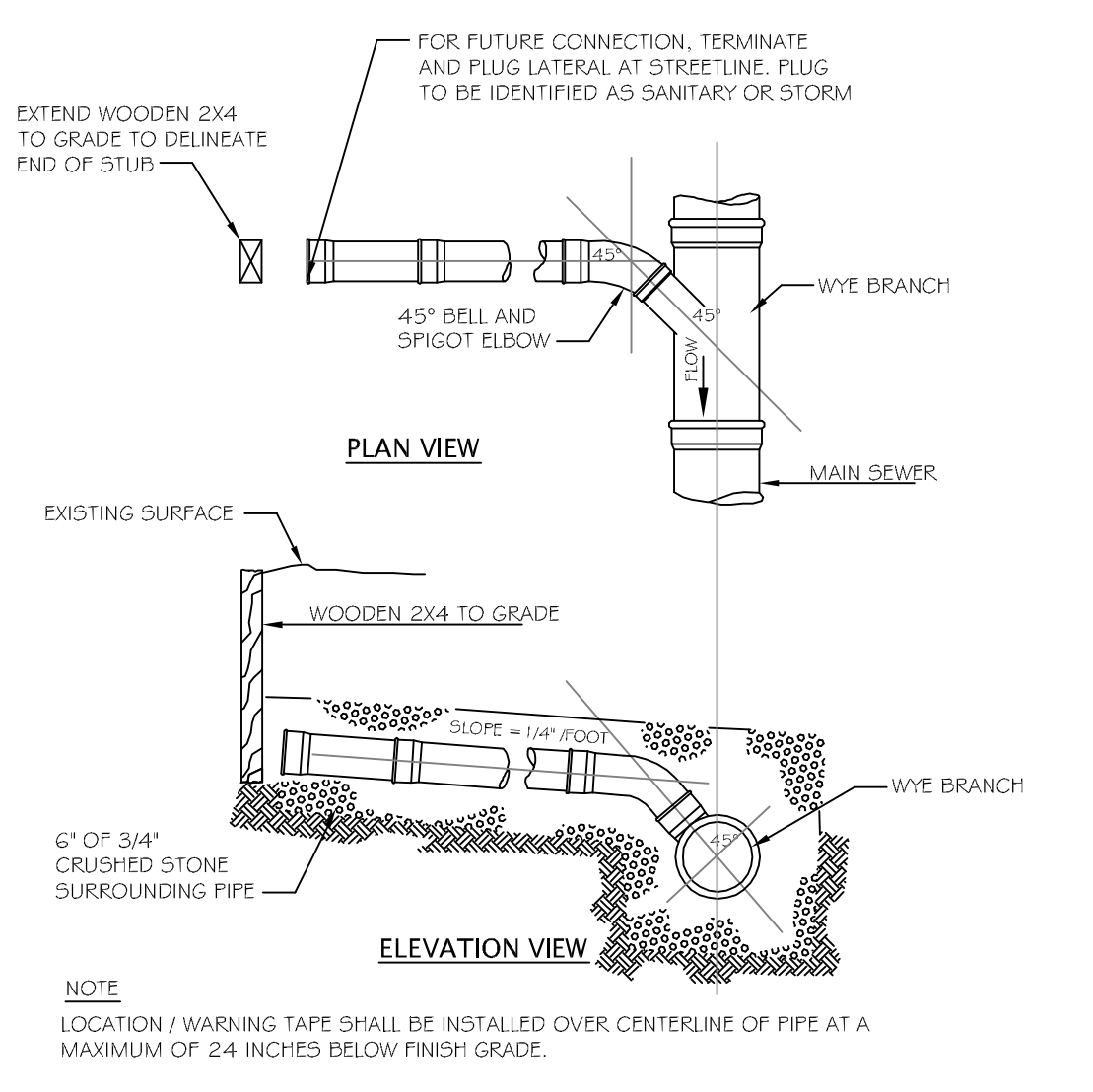
PIPE DIAMETER, D (INCHES)	MAX. TRENCH WIDTH, A (FEET)
4	4.0
6	4.0
10	4.0
12	5.0
15	5.0
18	5.0
21	5.0
24	6.0
27	6.0
30	6.0
36	6.0
42	7.0
48	7.0

NOTES:
DEPTH OF BITUMINOUS PAVEMENT AND AGGREGATE COURSES SHALL BE DETERMINED BY STREET CLASSIFICATION.
ANY ALTERNATE TRENCHING OR PAYMENT METHODS SHALL BE APPROVED IN ADVANCE BY THE CITY OF PORTLAND, DEPARTMENT OF PUBLIC SERVICES.

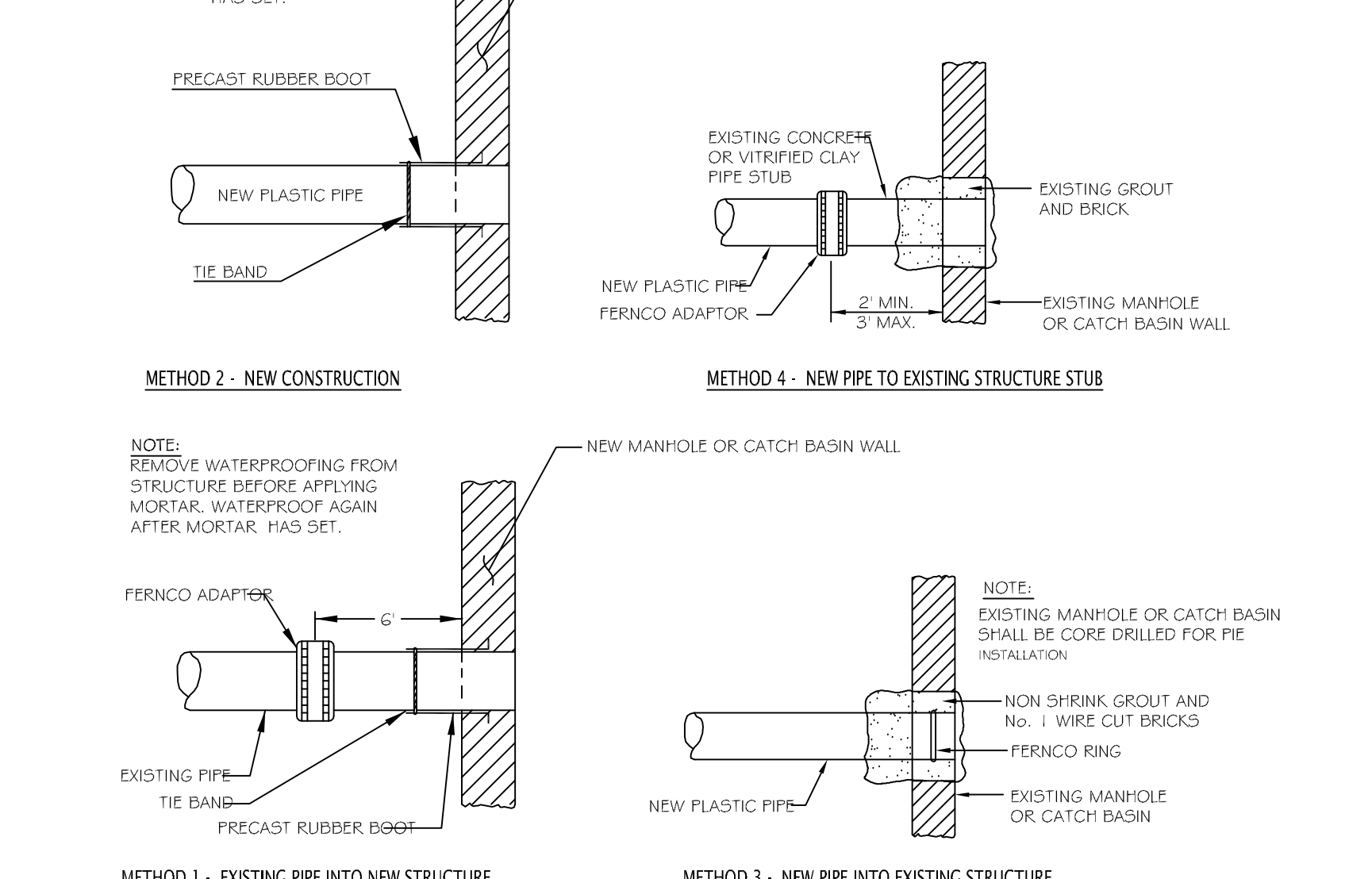
1 TYPICAL PIPE TRENCH INSTALLATION
NOT TO SCALE



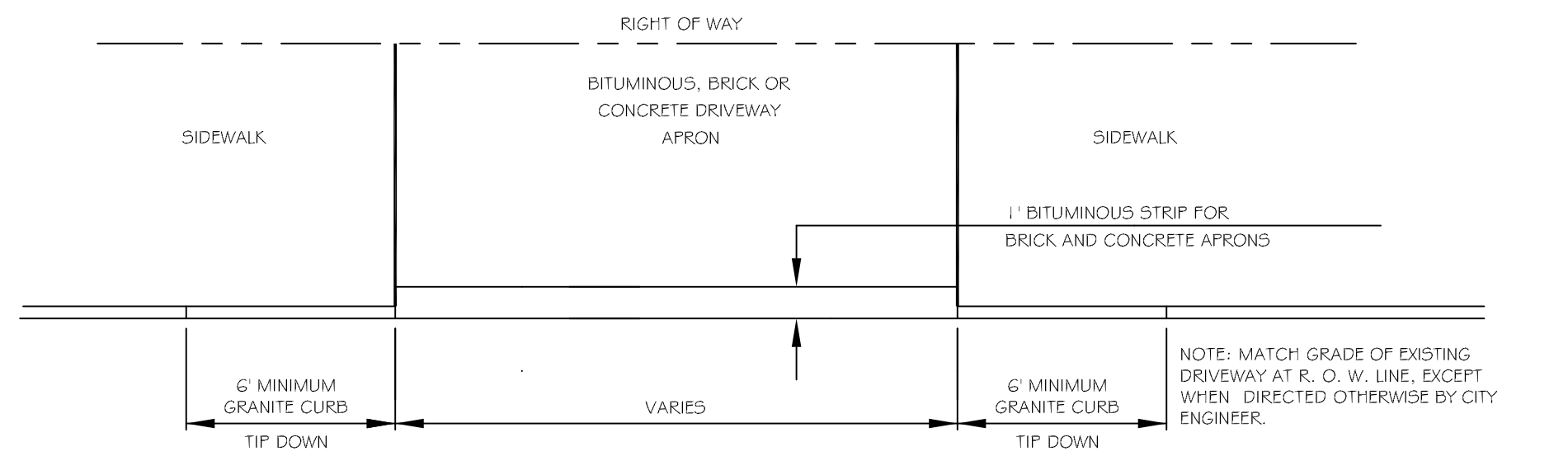
4 TYPICAL COPPER HOUSE SERVICE DETAIL
NOT TO SCALE



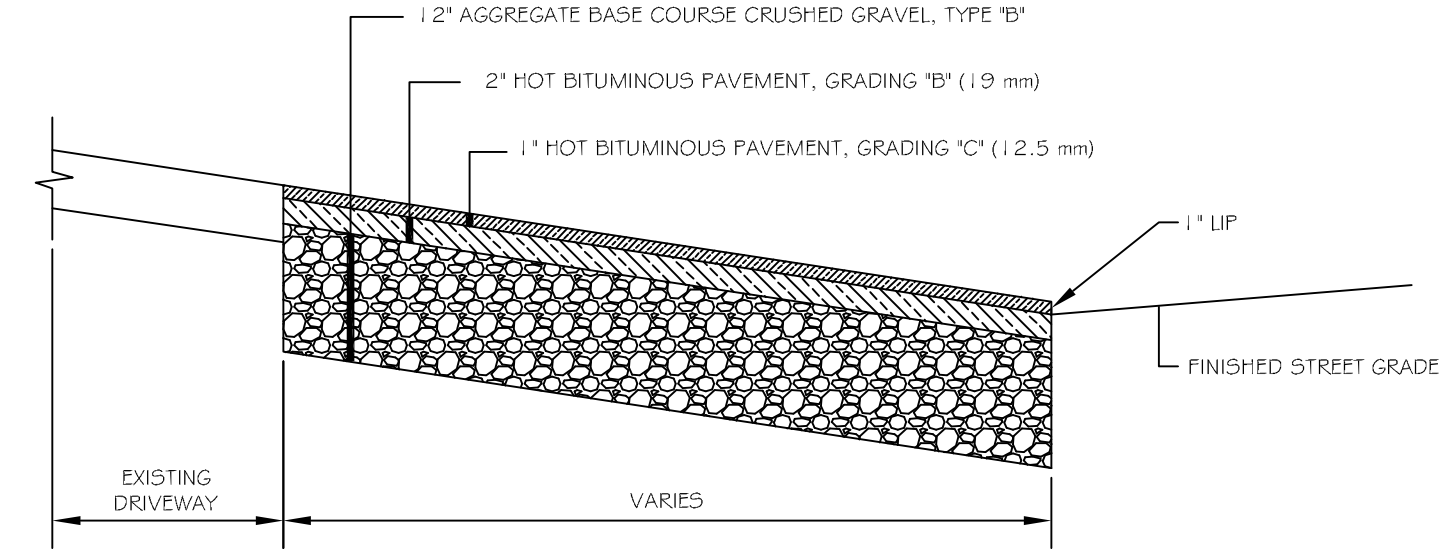
7 TYPICAL LATERAL WYE CONNECTION
NOT TO SCALE



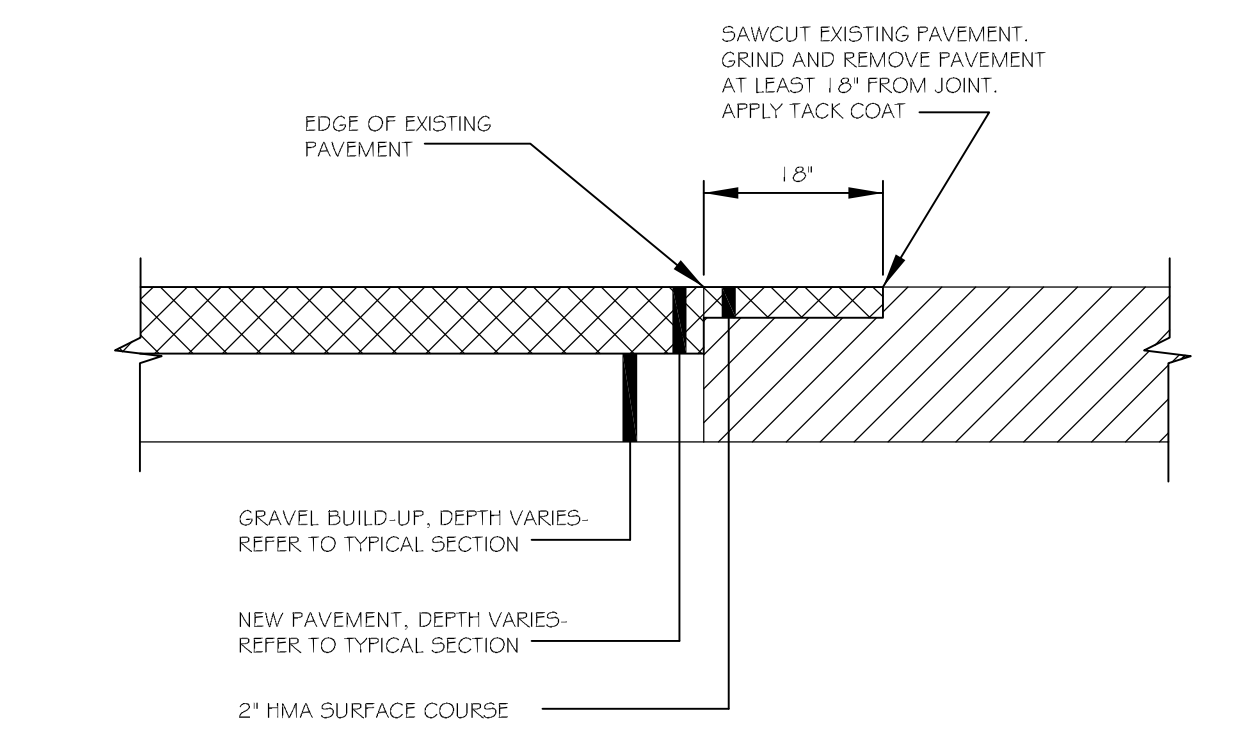
10 PIPE CONNECTION DETAILS
NOT TO SCALE



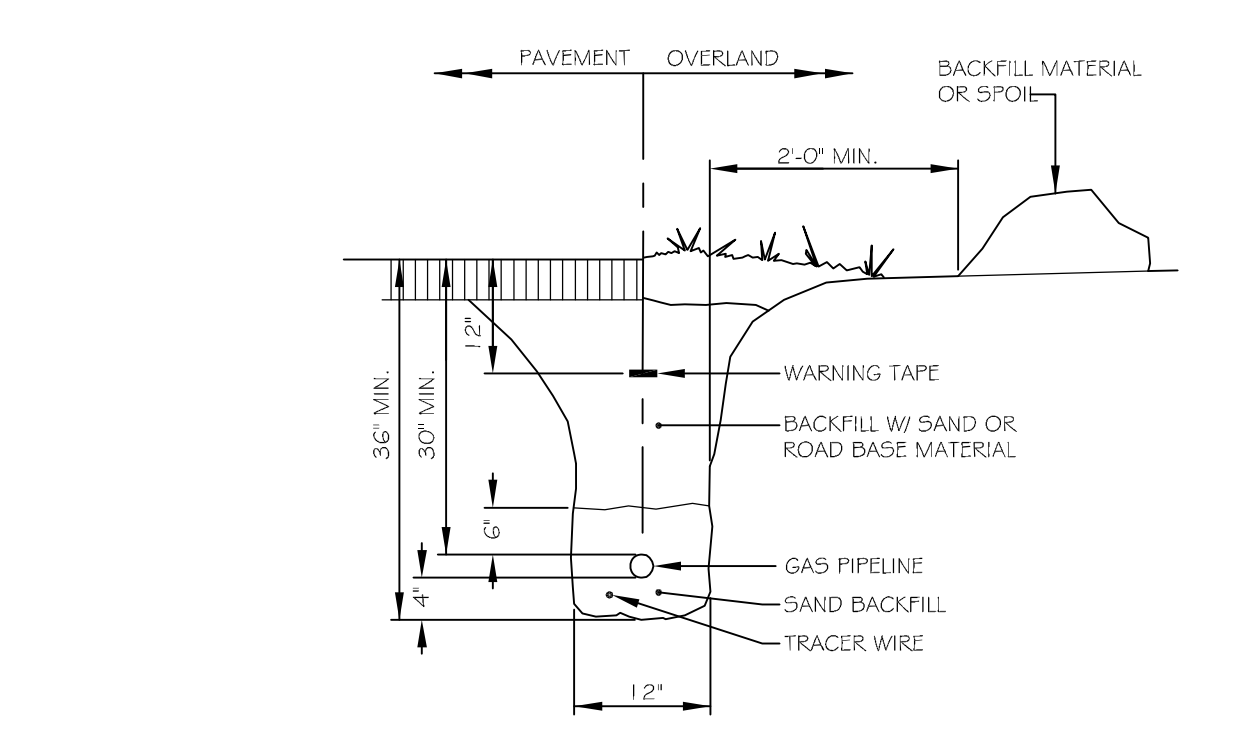
2 DRIVEWAY APRON LAYOUT
NOT TO SCALE



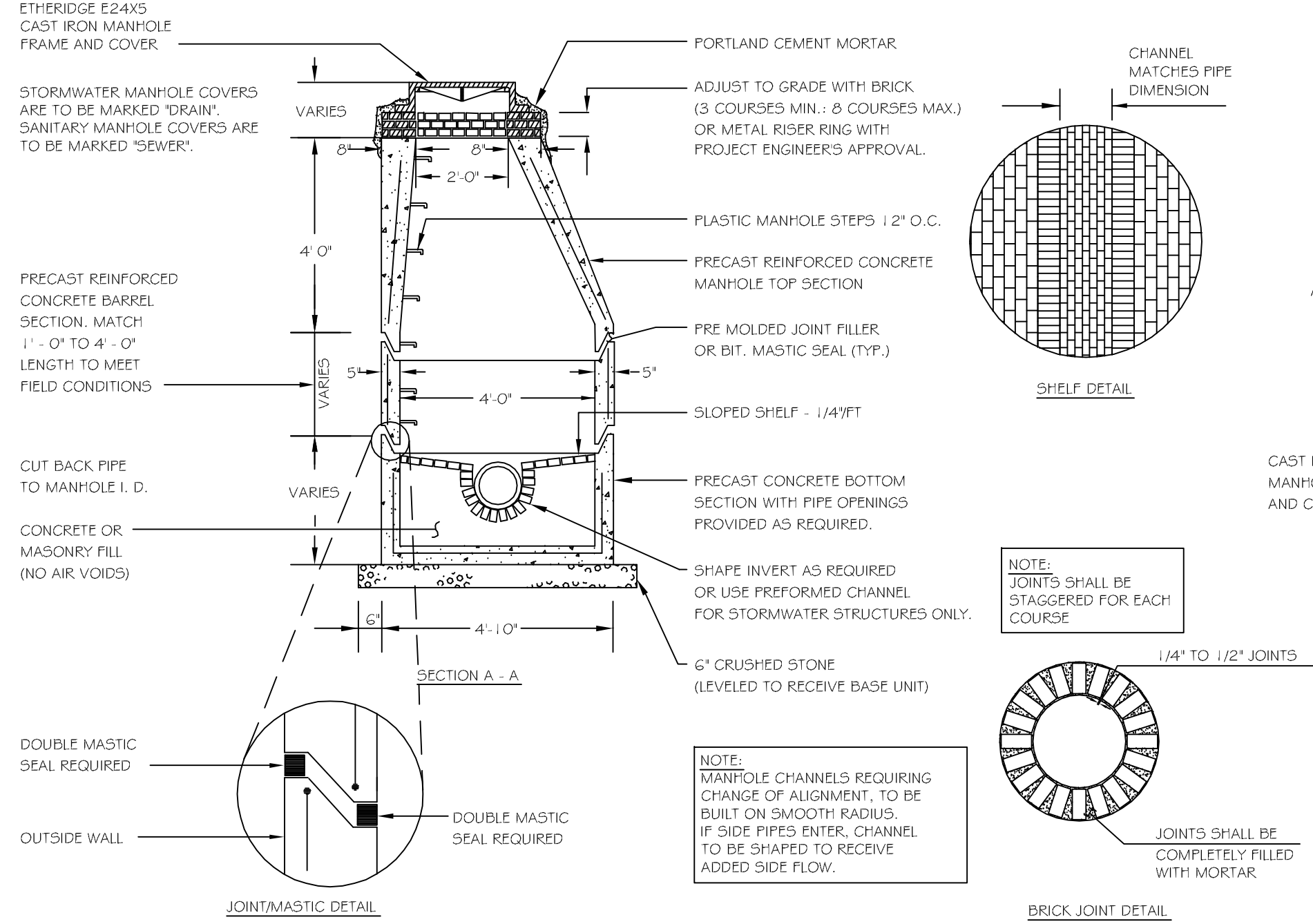
5 BITUMINOUS DRIVEWAY APRON
NOT TO SCALE



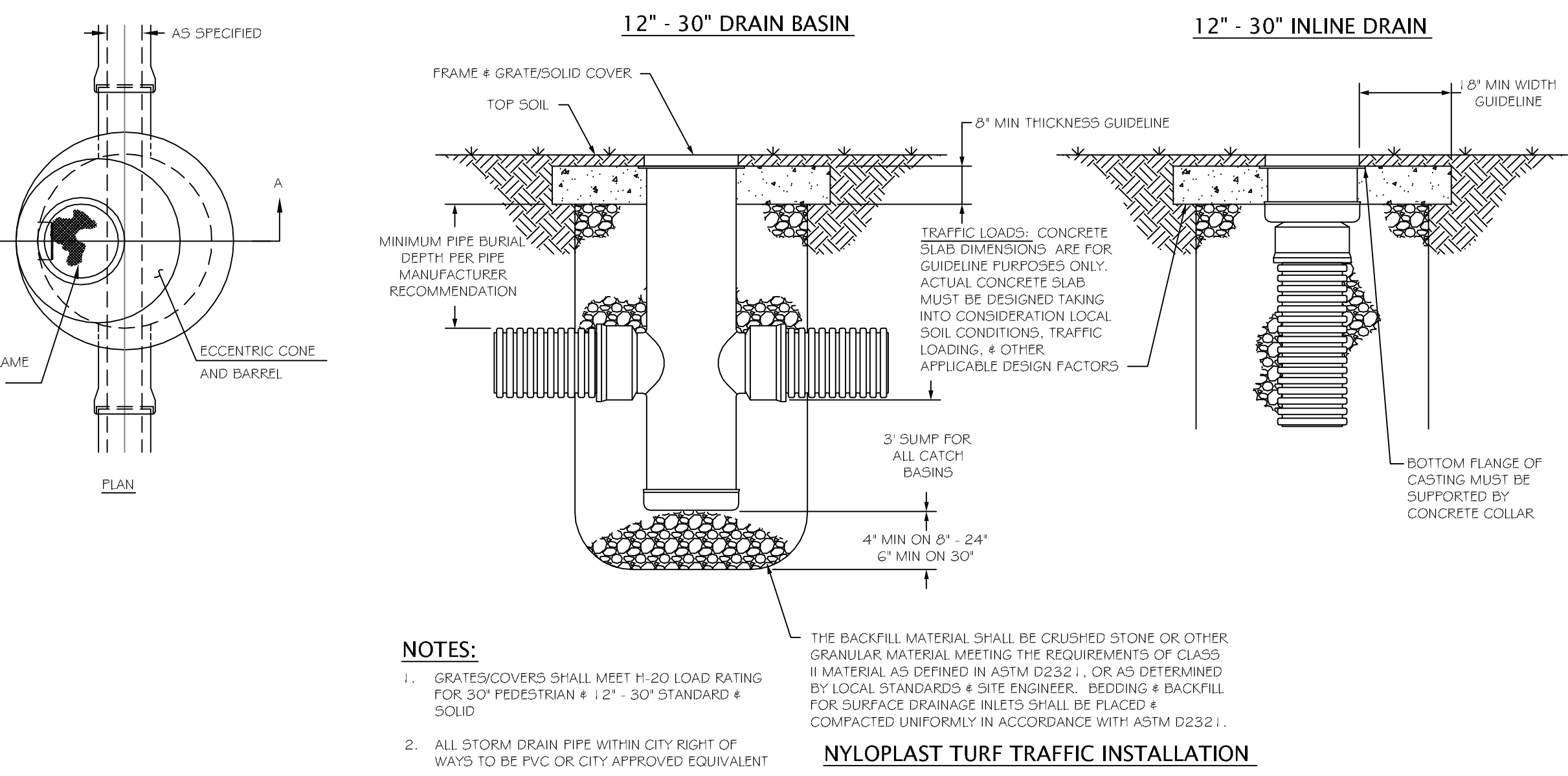
8 PAVEMENT BUTT-JOINT DETAIL
NOT TO SCALE



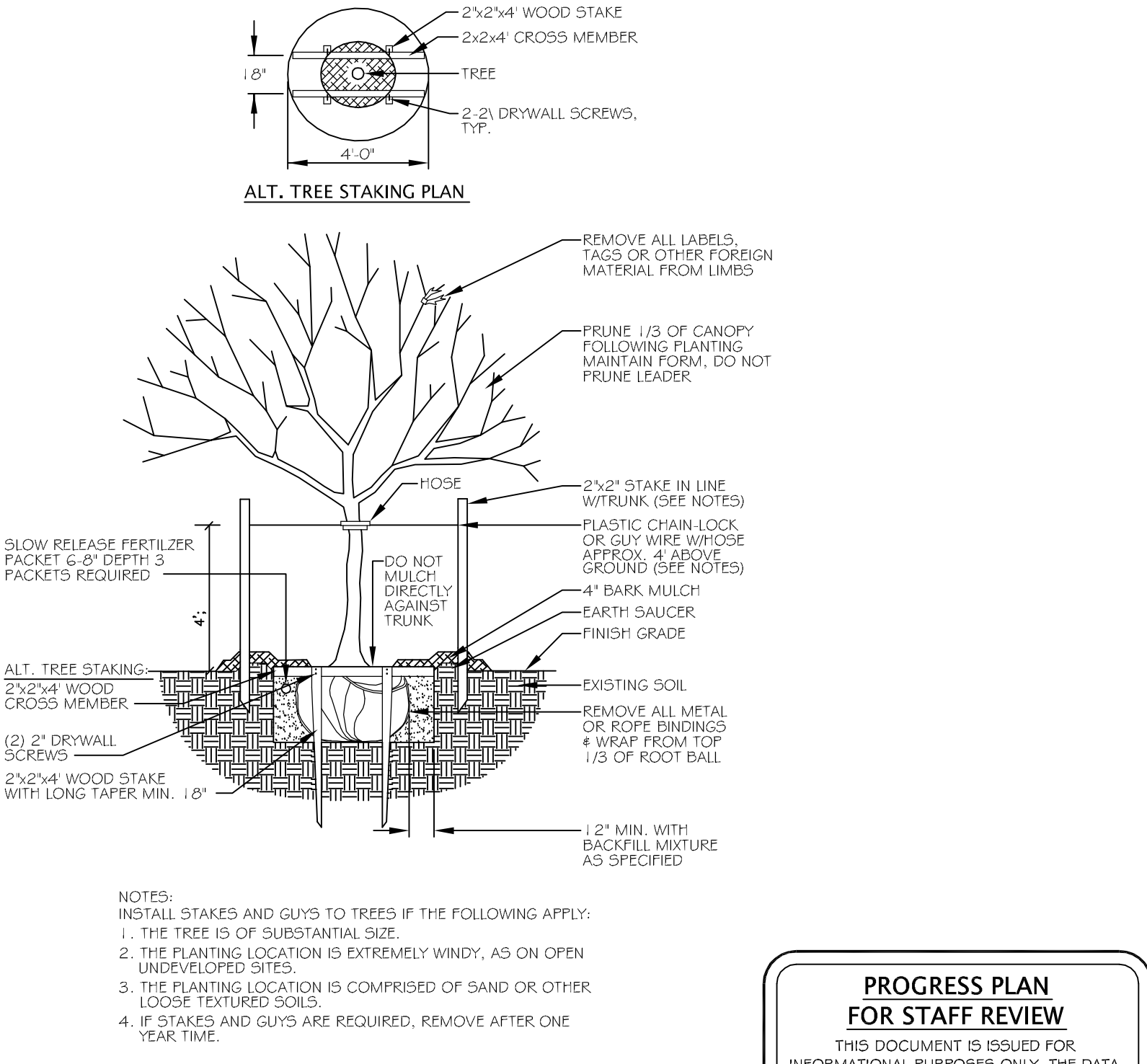
11 GAS PIPING TRENCH SECTION
NOT TO SCALE



3 PRECAST CONCRETE MANHOLE
NOT TO SCALE



6 NYOPLAST FIELD INLET (By HANCOR)
NOT TO SCALE

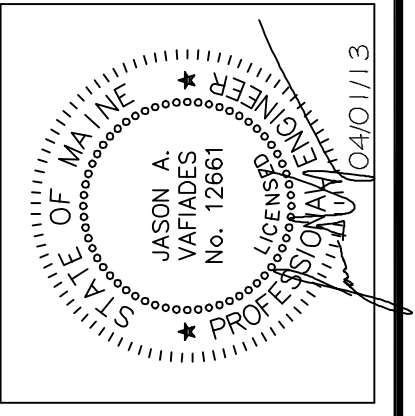


9 DECIDUOUS TREES
NOT TO SCALE

PROGRESS PLAN FOR STAFF REVIEW
THIS DOCUMENT IS ISSUED FOR INFORMATIONAL PURPOSES ONLY. THE DATA SHOWN HEREON IS SUBJECT TO REVISION.
APRIL 1, 2013

REVISIONS

No.	DATE	DESCRIPTION
1.	03/29/13	REVISED PER CITY REVIEW



Blais civil engineers
780 BROADWAY, SO. PORTLAND, ME 04106 (207) 767-7300
© 2012 BLAIS CIVIL ENGINEERS, P.A.

SITE DETAILS
PROPOSED SUBDIVISION
120 VERANDA STREET
OWNER: STEVEN E. & ROBERTA S. COPE
172 CONCORD STREET
PORTLAND, MAINE 04103

LATEST REVISION: GLENN BROWN
DATE: FEBRUARY 6, 2013
DESIGNED BY: JV
DRAWN BY: MV
CHECKED BY: JV/SB
BCE PROJECT NO. 12164