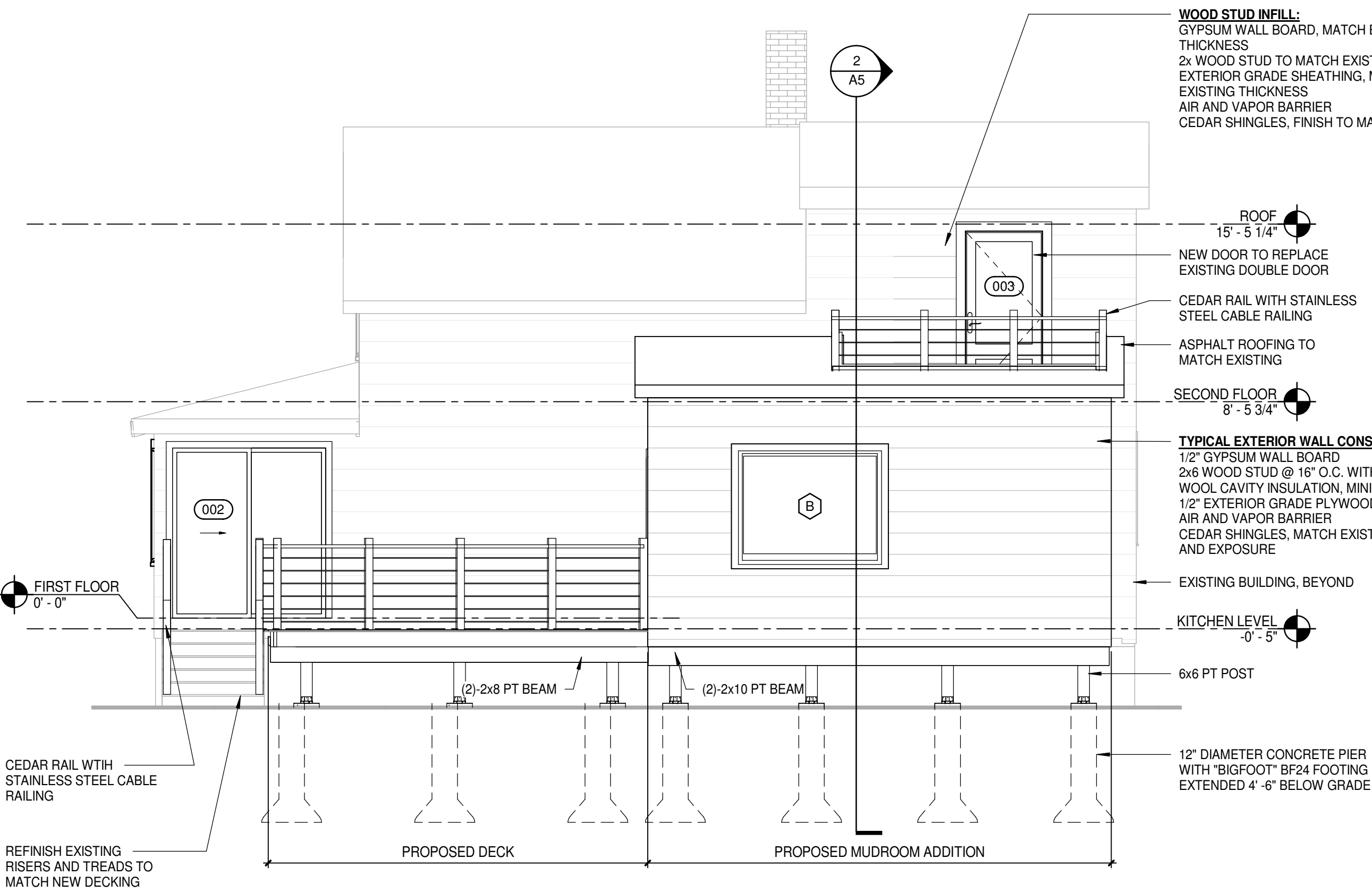


WINDOW SCHEDULE

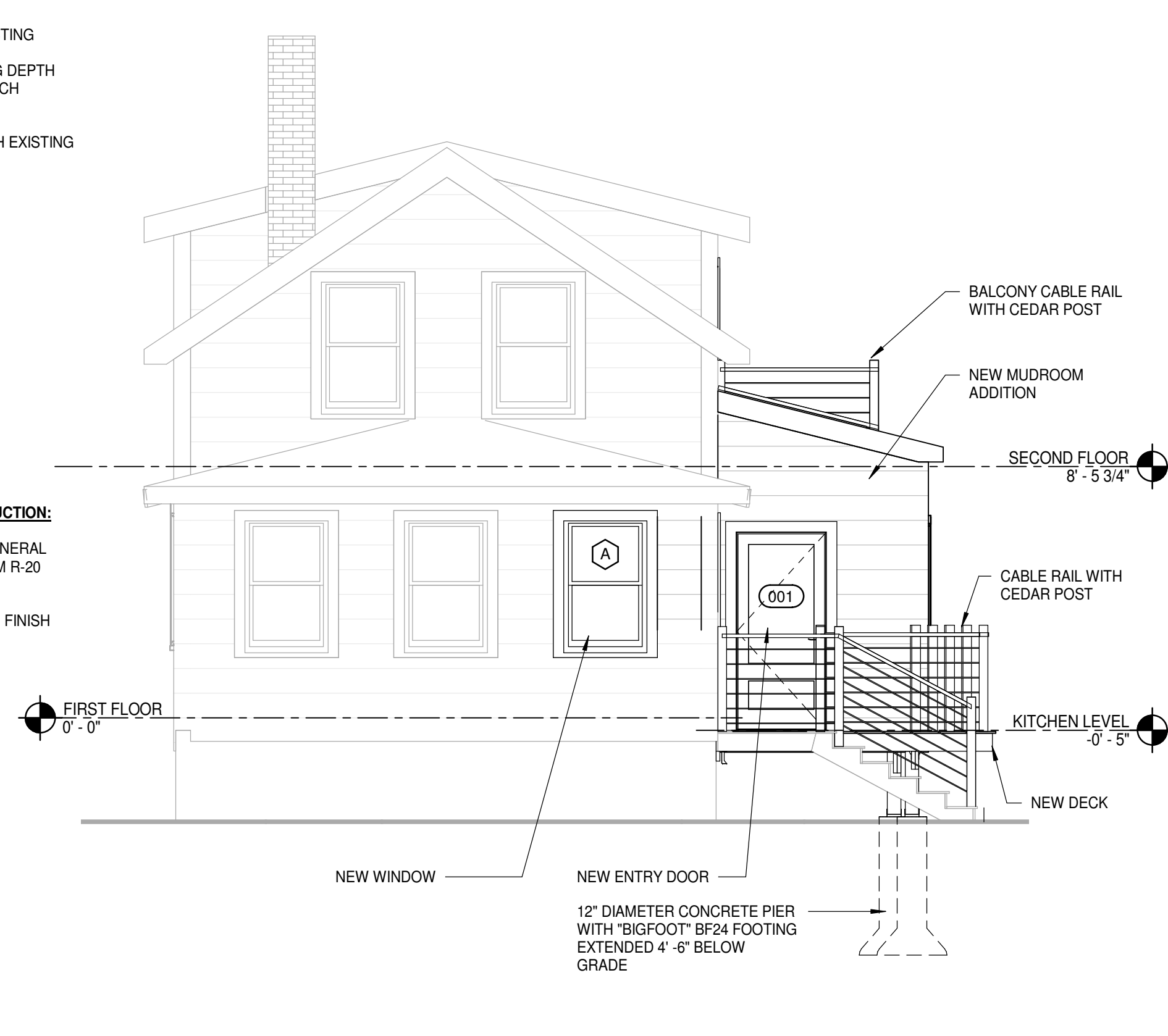
MARK	ROUGH WIDTH	ROUGH HEIGHT	MANUFACTURER	SERIES	MODEL NUMBER	DESCRIPTION	QUANTITY	COMMENTS
A	2' - 10 1/8"	4' - 5 3/8"	Andersen Corporation	400 SERIES	TW2842	Vinyl-clad hung window	1	
B	5' - 7 13/16"	4' - 5 3/8"	Andersen Corporation	400 SERIES	DHP5642	Vinyl-clad picture window	1	

DOOR AND FRAME SCHEDULE

DOOR #	DIMENSIONS			GLAZING	MANUFACTURER	SERIES	MODEL NUMBER	DESCRIPTION	REMARKS
	ROUGH WIDTH	ROUGH HEIGHT	THICKNESS						
001	3' - 2"	6' - 9"	0' - 1 3/4"	LOW-E	ThermaTru	SMOOTH-STAR	S92	3/4 Lite 1 Panel	
002	6' - 0"	6' - 8"	0' - 1 3/4"	TEMPERED	Andersen Corporation	400 SERIES	FWG6068L	Frenchwood® Gliding Patio Door	
003	3' - 2"	6' - 9"	0' - 1 3/4"	LOW-E	ThermaTru	SMOOTH-STAR	S92	3/4 Lite 1 Panel	



1 EXTERIOR ELEVATION - SIDE
 1/4" = 1'-0"



2 EXTERIOR ELEVATION - FRONT
 1/4" = 1'-0"



NOONE RESIDENCE
MUDROOM ADDITION
 6 KENDALL STREET, PORTLAND, MAINE 04103

DISCLAIMER:
 DRAWINGS WERE BASED ON CONTRACTORS SKETCHES AND PREPARED BY A DRAFTSPERSON AND NOT BY A LICENSED ARCHITECTURAL PROFESSIONAL. STRUCTURAL ELEMENTS PROVIDED AND REVIEWED BY STAMPING STRUCTURAL ENGINEER.

No.	Description	Date
0	ISSUED FOR PERMIT	01.31.18

EXTERIOR ELEVATION	
Project number	17010
Date	01.31.2018
Scale	1/4" = 1'-0"
A6	