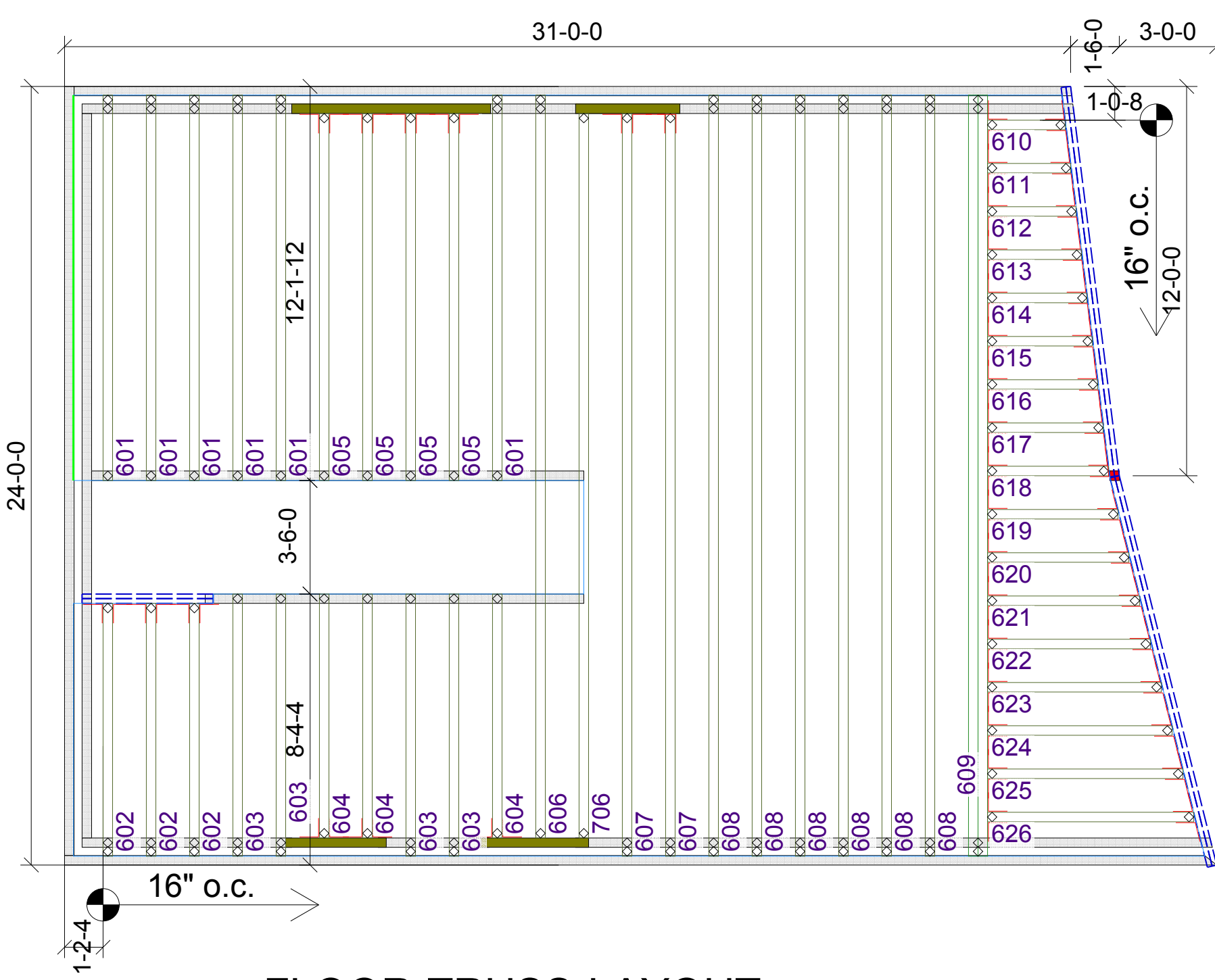


ROOF TRUSS LAYOUT

SCALE: 1/4" = 1'-0"
TRUSSES @ 24"o.c. (MAX)

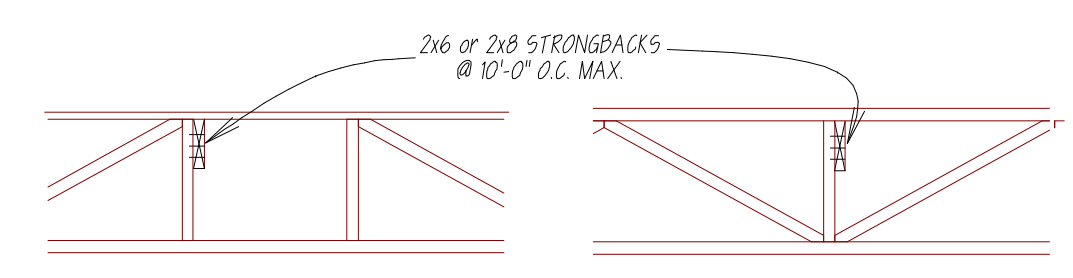


FLOOR TRUSS LAYOUT

SCALE: 1/4" = 1'-0"
TRUSSES @ 16"o.c.

TO HELP TRANSFER LOADS OVER SEVERAL TRUSSES AND TO ADD IN STIFFENING THE WHOLE FLOOR SYSTEM, WE RECOMMEND THE USE OF A CONTINUOUS LATERAL BRACE KNOWN AS A STRONGBACK. SPECIFIC STRONGBACK INFORMATION IS SUPPLIED WITH DELIVERY OF ALL BOISE STRUCTURAL SOLUTIONS FLOOR TRUSS ORDERS.

TYPICAL LOCATIONS



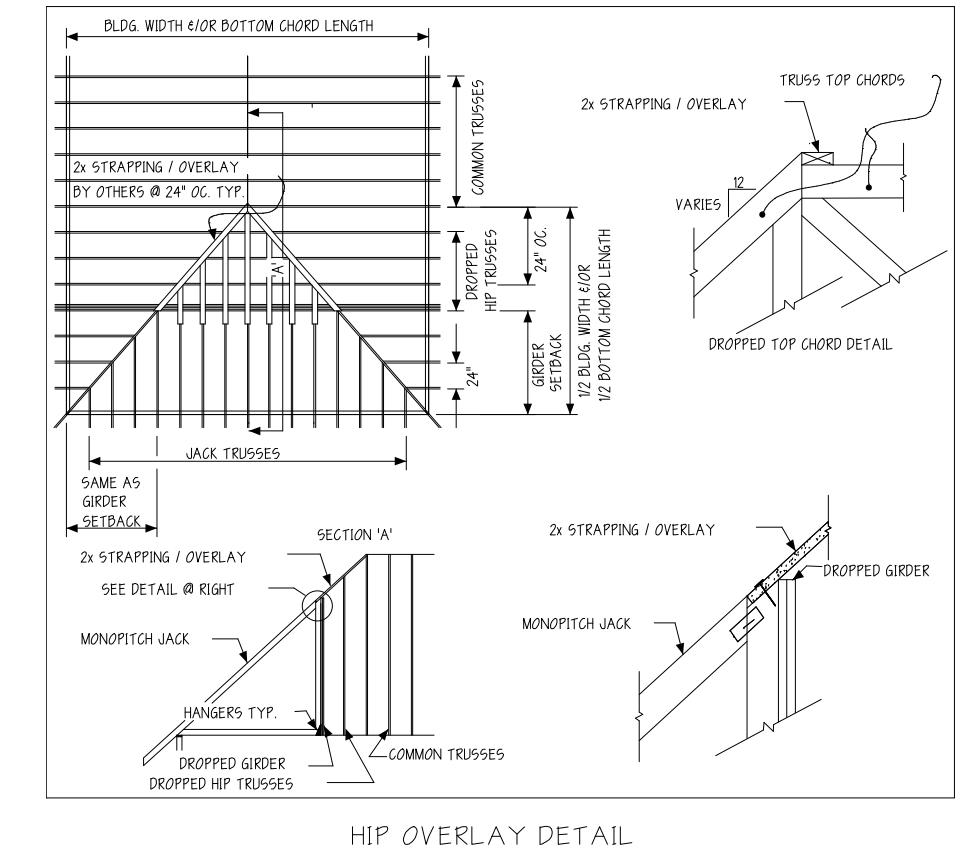
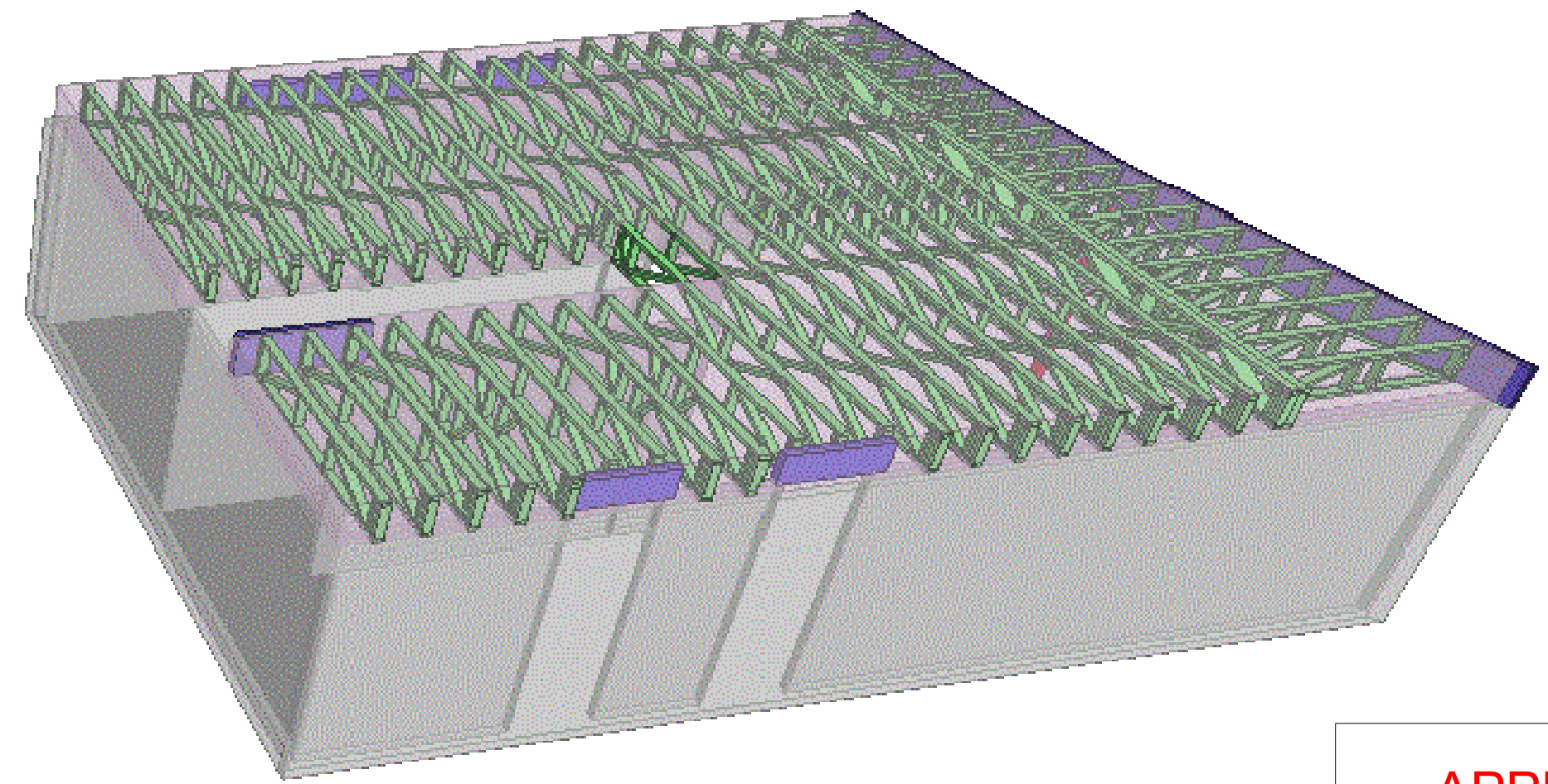
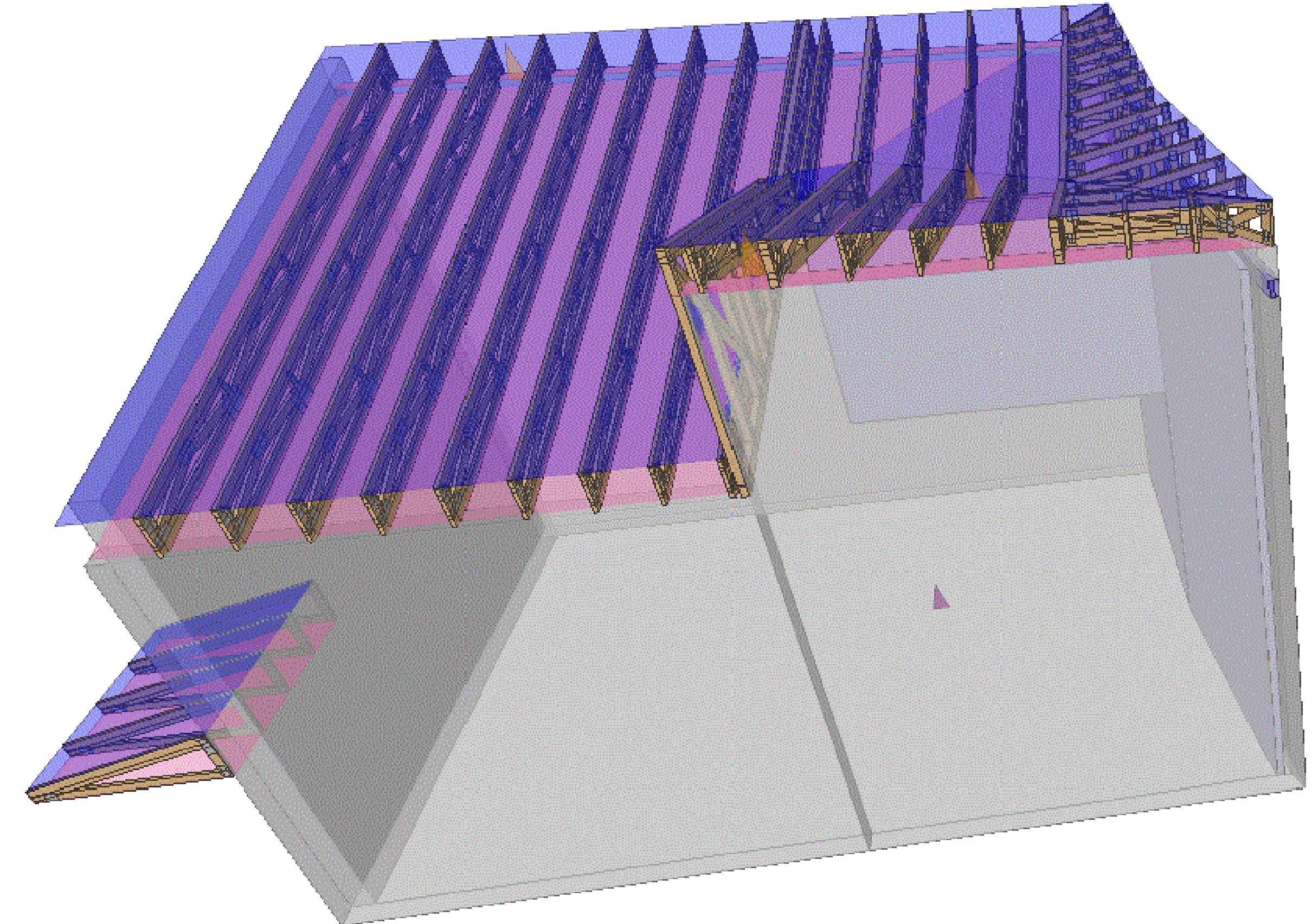
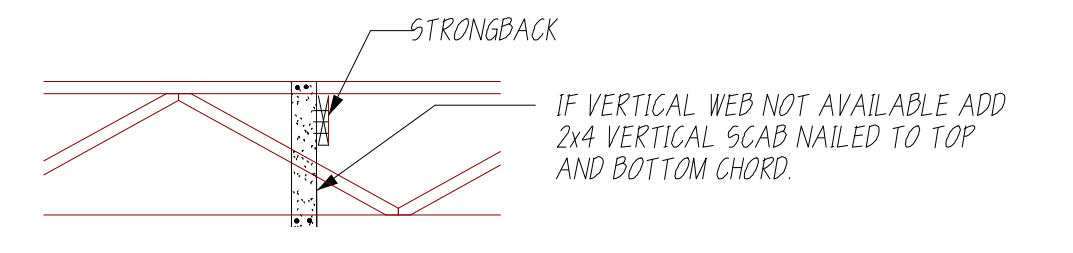
CONTINUOUS 2x6 STRONGBACKS (2x8 ON TRUSSES 20" DEEPER) ARE RECOMMENDED @ 10'-0" O.C. MAX. AND LAP A MIN. OF ONE TRUSS SPAN AT SPLICES. STRONGBACKS MUST BE ATTACHED TO BEARING WALLS AT THEIR ENDS.

STRONGBACKS MUST BE LOCATED ON A VERTICAL WEB AS CLOSE TO THE TOP CHORD AS POSSIBLE.

STRONGBACKS ARE NAILED AT EVERY TRUSS WITH (3) 10d NAILS.

STRONGBACKS ARE NOT SUPPLIED BY BOISE STRUCTURAL SOLUTIONS.

ALT. LOCATION



**APPROVAL REQUIRED.
NOT FOR CONSTRUCTION.**

JOB SPECIFIC NOTES

- A) ANY FRAMING NOT SHOWN ON THIS LAYOUT IS BY OTHERS.
- B) ANY CONNECTION NOT SHOWN ON THIS LAYOUT IS BY OTHERS.
- C) HANGERS SUPPLIED BY BOISE CASCADE ARE MANUFACTURED BY USP.

GENERAL NOTES:

- 1) FOR BRACING REQUIREMENTS & ERECTION INFORMATION SEE T.P.I. PUBLICATION BCSI-B2.
- 2) BRACING STOCK (2x4 MIN) NOT SUPPLIED BY BOISE CASCADE.
- 3) SEE TRUSS ENGINEERING FOR ADDITIONAL INFORMATION.
- 4) ALL DIMENSIONS, DESIGN LOADS & TRUSS QUANTITIES MUST BE VERIFIED PRIOR TO FABRICATION.
- 5) ADDITIONAL FRAMING AS REQUIRED BY OTHERS.
- 6) THIS DRAWING IS INTENDED TO SERVE AS A LAYOUT GUIDE FOR THE TRUSS ERECTION CREW TO ENSURE PROPER PLACEMENT & SPACING OF TRUSSES. THIS IS NOT A COMPLETE FRAMING PLAN.
- 7) FINAL APPROVAL OF THIS LAYOUT & THE TRUSS COMPONENTS TO BE SUPPLIED FOR COMPLIANCE WITH PROJECT SPECIFICATIONS REMAINS THE RESPONSIBILITY OF THE ARCHITECT & ENGINEER OF RECORD.
- 8) VALLEY BY CONTRACTOR; VALLEY MUST BE FRAMED TO ENSURE UNIFORM DISTRIBUTION OF LIVE & DEAD LOADS. TOP CHORDS OF THE TRUSSES BELOW MUST BE Laterally BRACED BY MEANS OF SHEATHING OR PURLINS @ 24"O.C. MAX.
- 9) SOME HANGERS AND UPLIFT CONNECTORS CANNOT BE PROPERLY INSTALLED AFTER SETTING TRUSSES AND/OR ROOF SHEATHING.
- 10) BOISE CASCADE WILL ASSUME NO RESPONSIBILITY FOR ANY DEVIATION FROM THE CONTENT OF THESE DRAWINGS WITH REGARDS TO ANY STRUCTURAL MEMBERS THAT ARE MADE WITHOUT WRITTEN AUTHORIZATION FROM BOISE CASCADE.
- 11) BOISE CASCADE WILL NOT ACCEPT ANY BACK CHARGES FOR REPAIRS OR MODIFICATIONS WITHOUT NOTIFICATION PRIOR TO WORK BEING DONE WITHOUT REASONABLE OPPORTUNITY TO REVIEW PROBLEM. BACK CHARGES MUST BE AGREED UPON BY ALL PARTIES PRIOR TO WORK BEING DONE.

Boise Cascade Materials Distribution "Structural Solutions" 20 Pomerleau Street Biddeford, Maine 04005 PH 1-877-291-5276 FX 1-877-782-9599	DIMENSION KEY Feet Inches (12) (6) (8) Sixteenths	LOADING CHART (psf) TCLL = 60.0 (60# Ground Snow) TCCL = 10.0 BCCL = 0.0 BCCL = 10.0	CUSTOMER: ROSEN-NEWTON PORTLAND, ME.
	DRAWN BY: BvB	SCALE: 1/4" = 1'-0" DATE: 07/13/2017 REVISED:	JOB NAME: ROSEN-NEWTON ADDRESS: PORTLAND, ME.