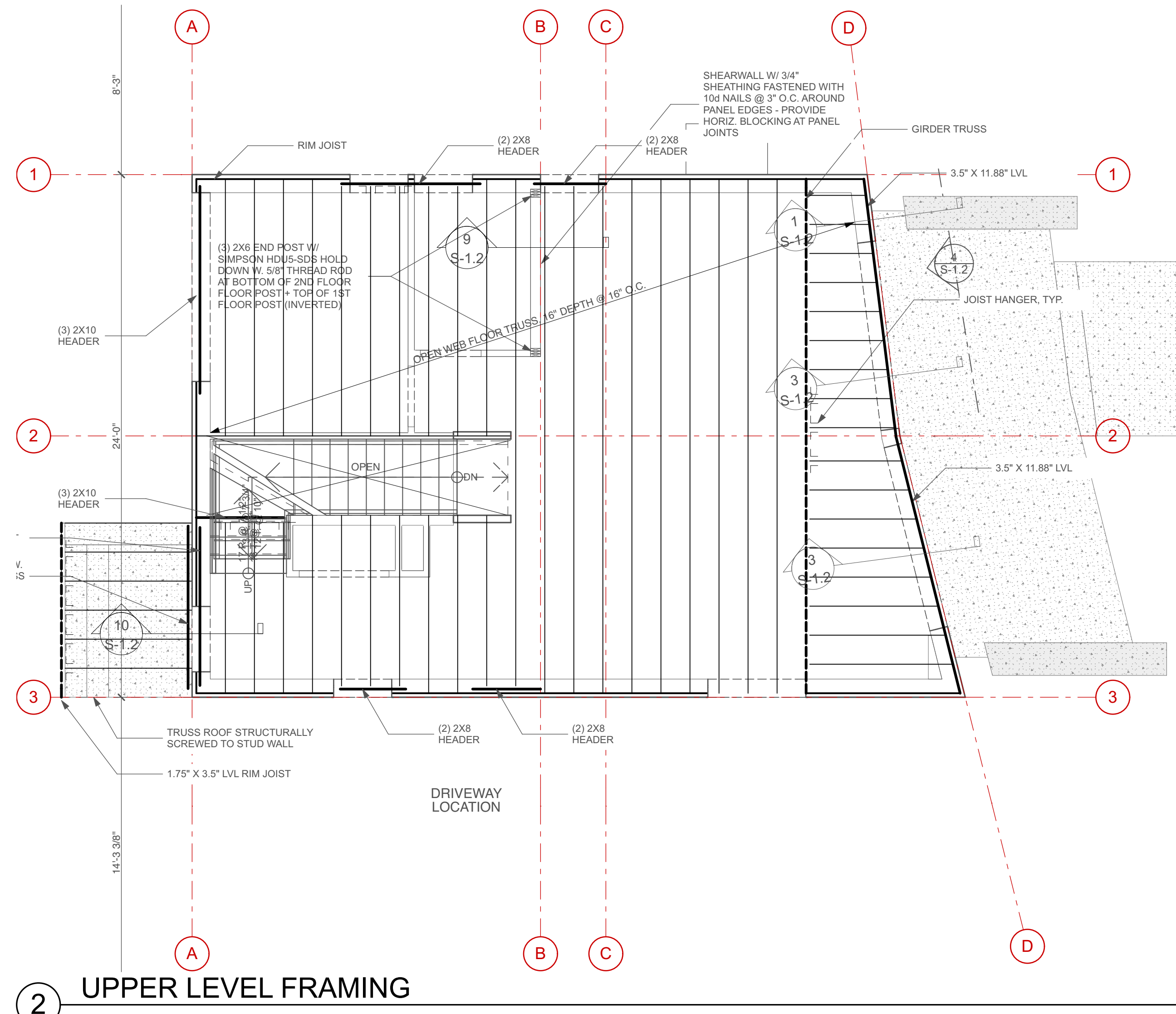


3 ROOF FRAMING



2 UPPER LEVEL FRAMING

KEY

| | |
|--|---------------|
| | HEADER |
| | GIRDER OR LVL |
| | JOIST |
| | JOIST HANGER |

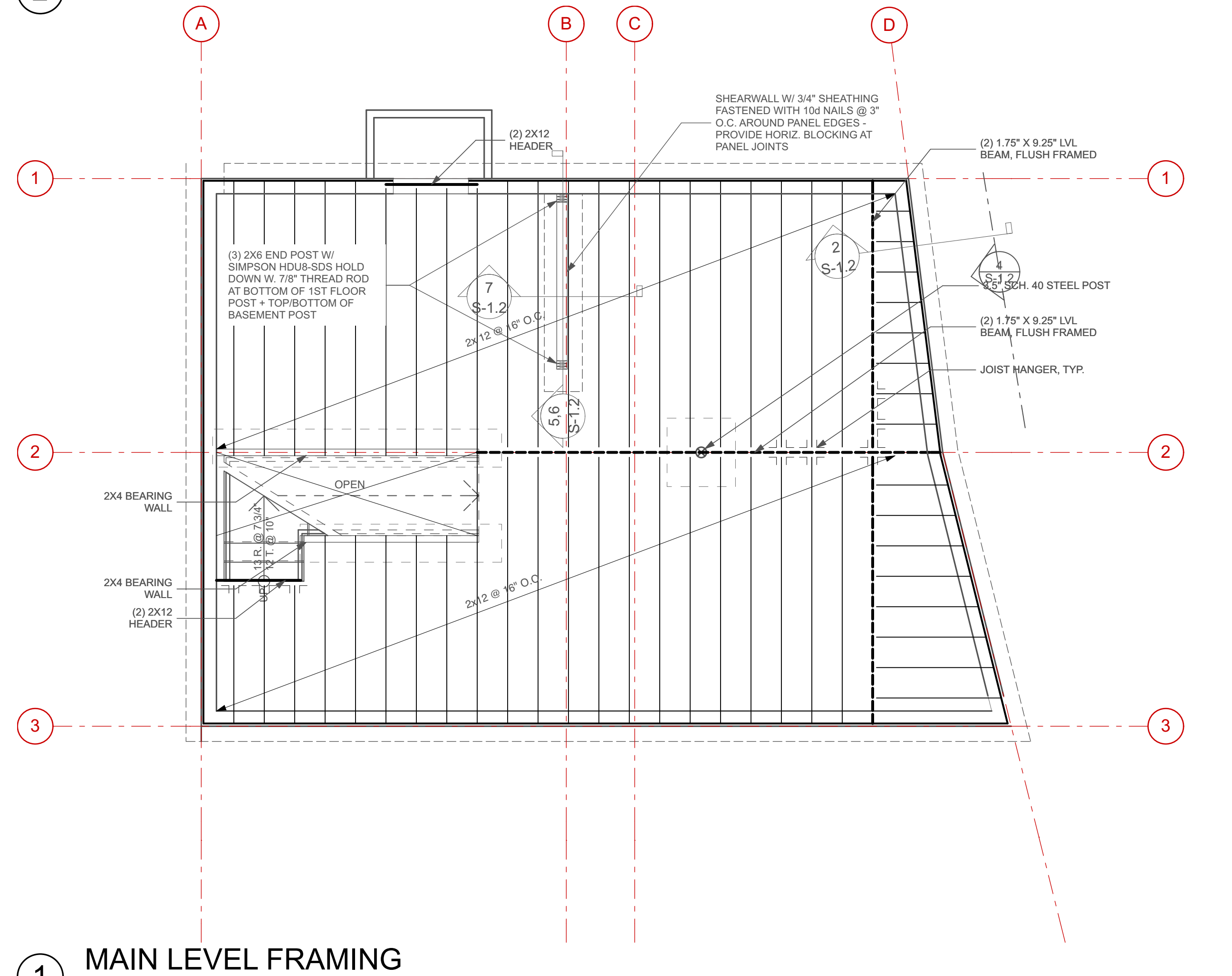
STRUCTURAL NOTES:

-ALL TIMBER FRAMING SHALL BE IN ACCORDANCE WITH THE NATIONAL DESIGN SPECIFICATION FOR WOOD CONSTRUCTION (NDS) 2005 EDITION. UNLESS NOTED OTHERWISE, ALL WOOD FRAMING SHALL BE FASTENED IN ACCORDANCE WITH 2009 IBC, SECTION 2304.9

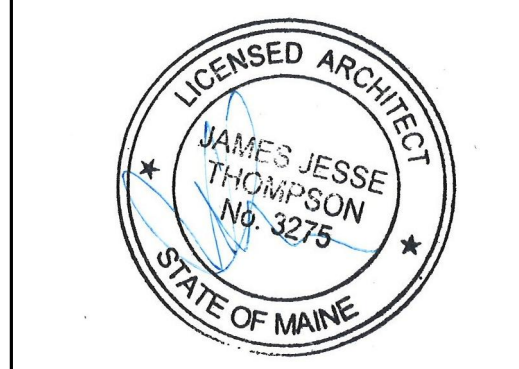
-DRILLED EPOXY ANCHORS SHALL BE HOT DIP GALV A307 THREADED ROD WITH SIMPSON 'AT' EPOXY. BLOW HOLES FREE OF DUST AND INSTALL PER MANUFACTURER'S INSTRUCTIONS, TYP U.N.O.; DRILLED EXPANSION ANCHORS SHALL BE MECHANICALLY GALVANIZED SIMPSON 5/8"Ø 'WEDGE-ALL' ANCHOR; RSS SCREWS SHALL BE CLIMATEK COATED AND MANUFACTURED BY GRK FASTENER. RSS SCREWS IN CONTACT WITH PRESERVATIVE-TREATED LUMBER SHALL BE STAINLESS STEEL.

-SHEAR WALL TOP AND BOTTOM PLATES MUST BE CONTINUOUS - DO NOT NOTCH OR CUT. LAP TOP AND BOTTOM PLATES MINIMUM 24" AND SECURE WITH TWO ROWS OF 16d NAILS AT 6" OC. SEE SHEARWALL NOTES FOR ADDITIONAL DETAILS.

-NAILS SHALL BE COMMON WIRE PER ASTM F1667 SIZED AS FOLLOWS UNLESS OTHERWISE APPROVED BY THE ENGINEER:
 8d = 0.131" x 2-1/2" LONG
 10d = 0.148" x 3" LONG
 16d = 0.162" x 3-1/2" LONG



1 MAIN LEVEL FRAMING



NOT FOR CONSTRUCTION
 PROJECT NO: RNT
 DATE: 04/25/2017
 REVISED 1:
 REVISED 2:
 DRAWN BY: JJT/CA
 PHASE: PERMIT SET