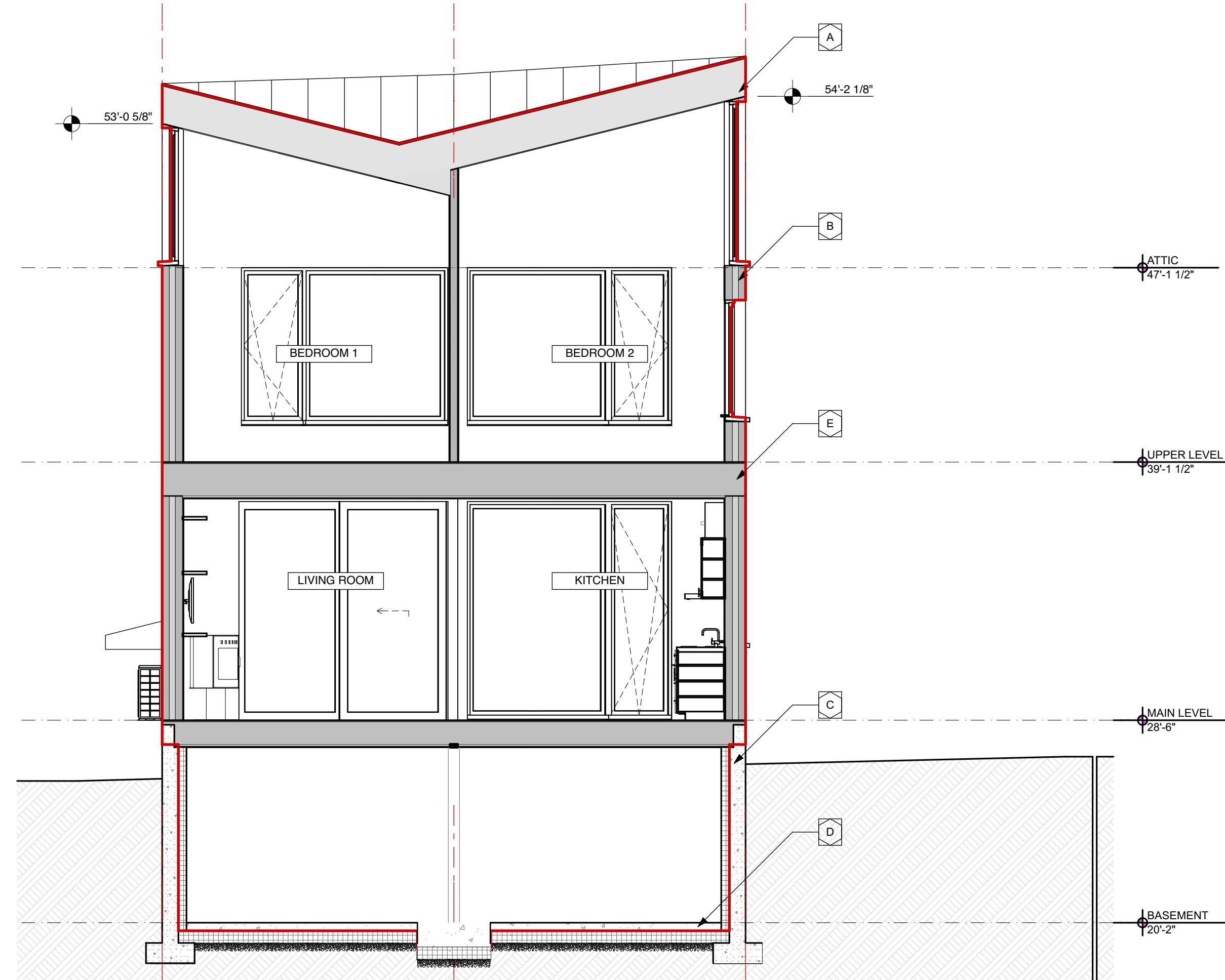


3 SECTION: N-S: STAIR
 SCALE: 1/4" = 1'-0"

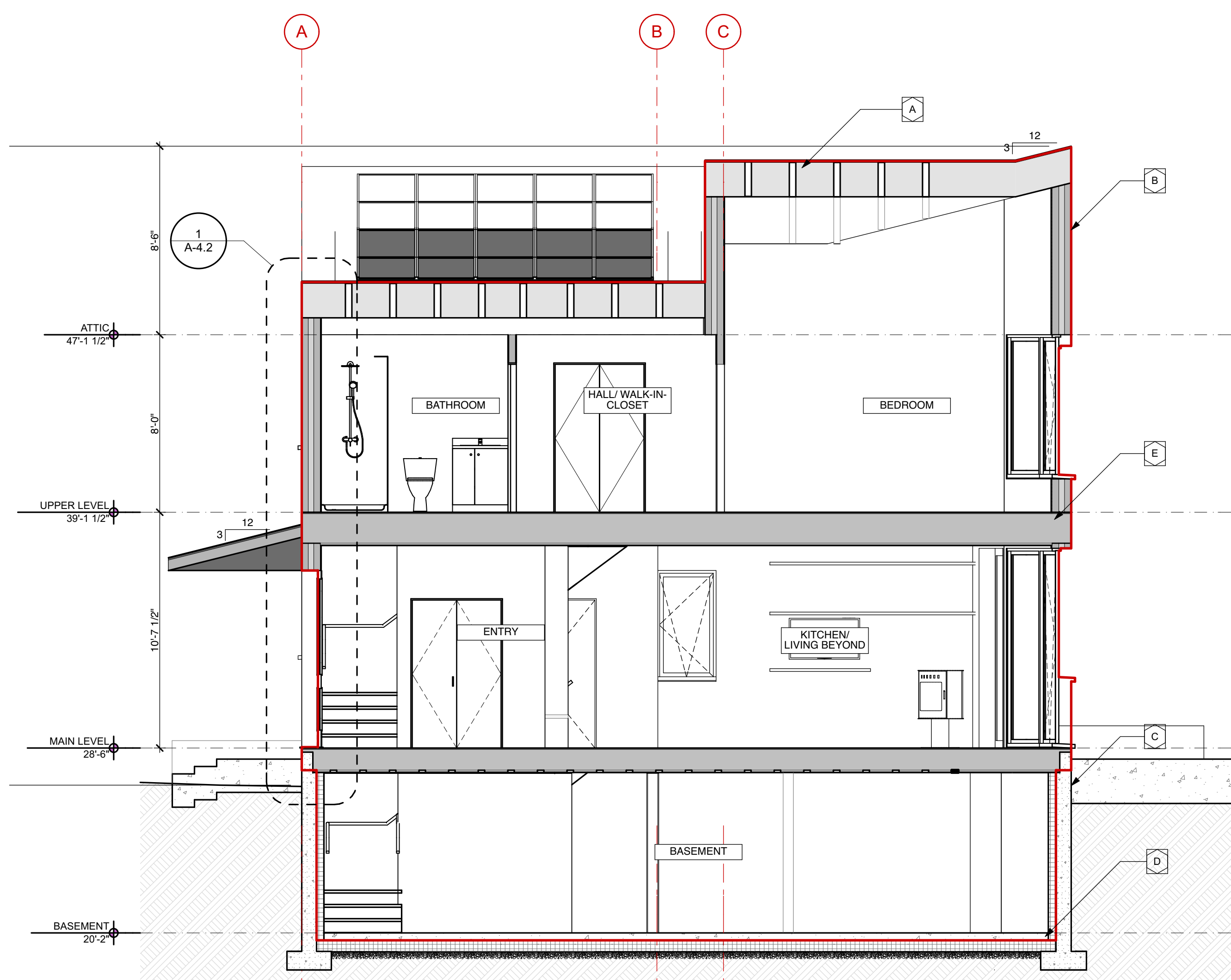


4 SECTION: N-S END
 SCALE: 1/4" = 1'-0"

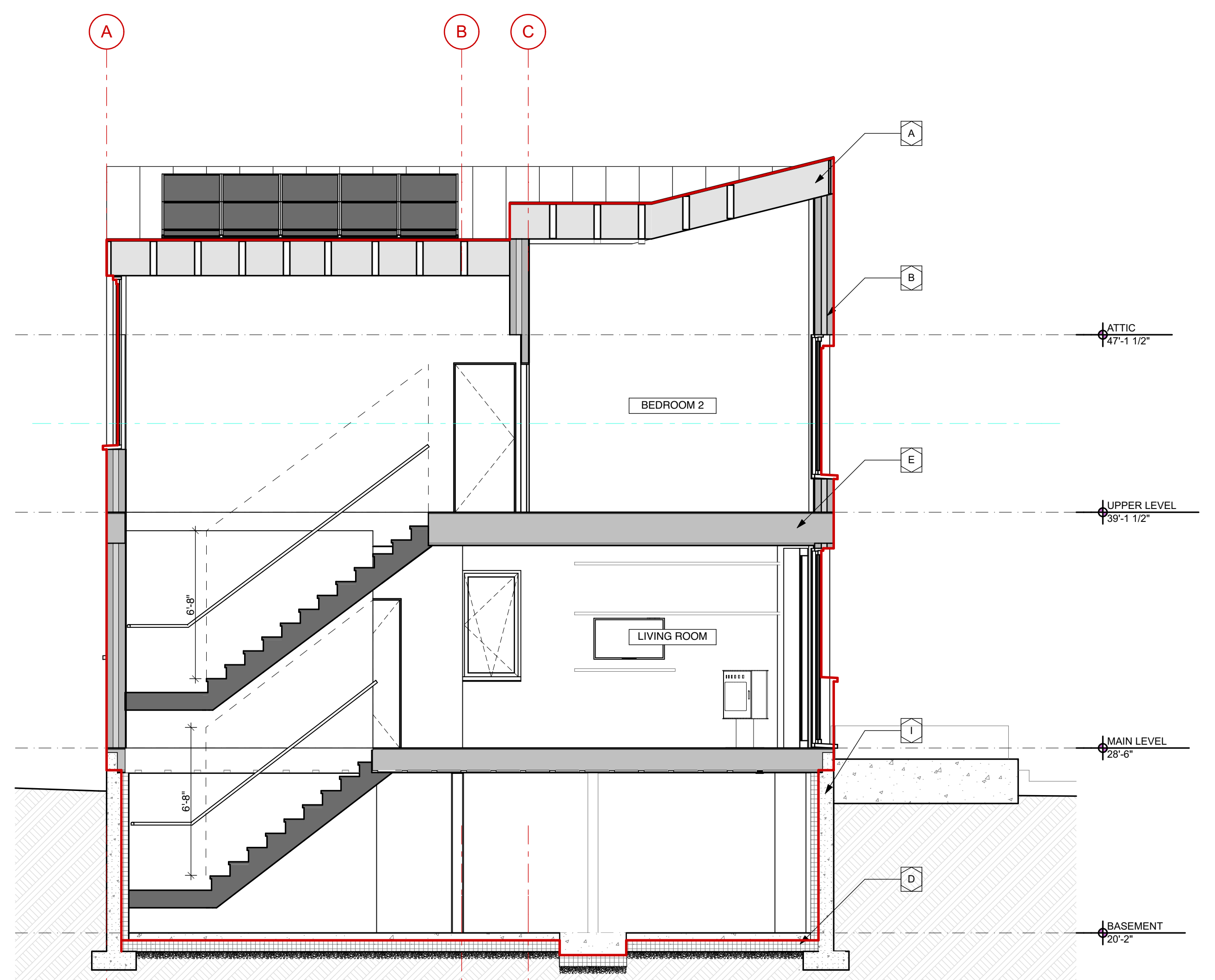
■ CONTINUOUS AIR BARRIER

ASSEMBLY NOTES

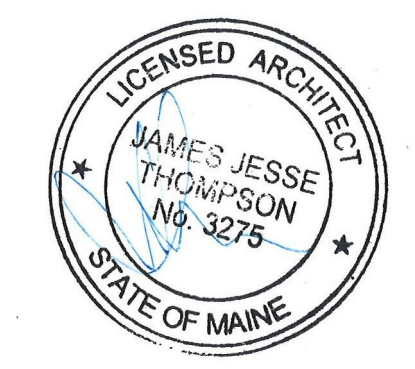
- A** PITCHED ROOFS: ~R-60
 Standing Seam Metal Roof,
 On Roofing Underlayment,
 On 1/2" OSB Sheathing,
 On 2x4 Flat vent Cavity,
 On 5/8" CDX w/ Taped Seams (Air Barrier),
 On Truss Roof System & Full-Depth D.P. Cellulose Insulation (See Struct.),
 On Smart Vapor Retarder
 On GWB Ceiling.
 See Interior Finish Schedule for Finish Materials.
- B** EXTERIOR WALL: ~R-38
 Exterior Siding Type S1, or S2 (See Elevations for Extents),
 On Rainscreen (1x3 K.D. strapping or "Home Slicker" - see siding type for extents, incl. black vinyl bug screen),
 On Weather Resistant Barrier (WRB),
 On 1/2" Plywood w/ Taped Seams (Air Barrier),
 On 10" Double Stud Wall (See Struct.) w/ Full-Depth Dense Packed Cellulose (@R-3.8/inch),
 On Smart Vapor Retarder
 On GWB.
 See Interior Finish Schedule for Finish Materials.
- C** CONC. FOUND. WALL: ~R-19
 Free Draining Backfill,
 On Sheet Waterproofing w/ Dimple Mat, Fluid-Applied Damproofing,
 On 8" Reinforced Concrete Wall,
 On Min. 15 Mil. Vapor Barrier Taped & Sealed,
 On 2" Polyiso Insul. (@R-6.2/inch),
 On 1" Thermax (@R-6.5/inch),
 On GWB.
 See Interior Finish Schedule for Finish Materials.
- D** FOUNDATION SLAB: ~R-25
 Sealed Reinforced 4" Concrete slab (See Struct.),
 On 15 Mil. min. Poly Vapor Barrier Taped and Sealed,
 On 6" Rigid EPS Insulation (@R-4.2/inch),
 On 6" Crushed Stone Fill (No Fines)
- E** INTERIOR FRAMED FLOORS:
 Finish Floor Material (See Interior Finish Schedule),
 On Structural Floor Sheathing (See Struct.),
 On Floor Joists (See Struct.),
 On GWB Ceiling.
 See Interior Finish Schedule For Finish Materials.



1 SECTION: E-W ENTRY
 SCALE: 1/4" = 1'-0"



2 SECTION: E-W STAIR
 SCALE: 1/4" = 1'-0"



NOT FOR CONSTRUCTION
 PROJECT NO: RNT
 DATE: 04/25/2017
 REVISED 1:
 REVISED 2:
 DRAWN BY: JJT/CA
 PHASE: PERMIT SET