

**PORT & GUTZ**  
**ARCHITECTURE**  
 55 NEWBURY STREET  
 PORTLAND, ME 04101  
 207.751.9000  
 fax 207.751.2010  
 info@portandgutz.com

CONSULTANTS

**Zukowski & Espino**  
**Residence**  
 52 Berwick  
 Portland, Maine

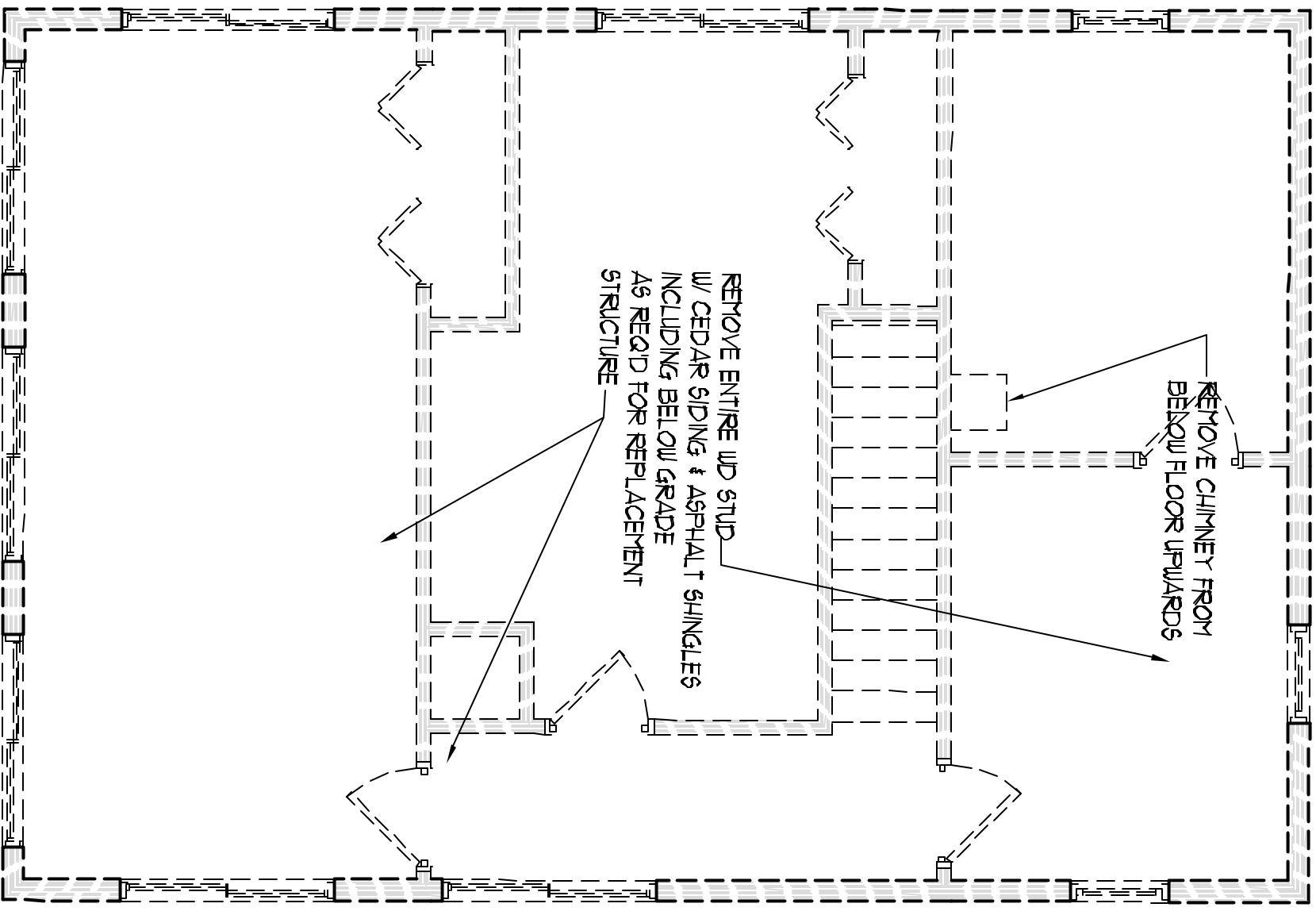
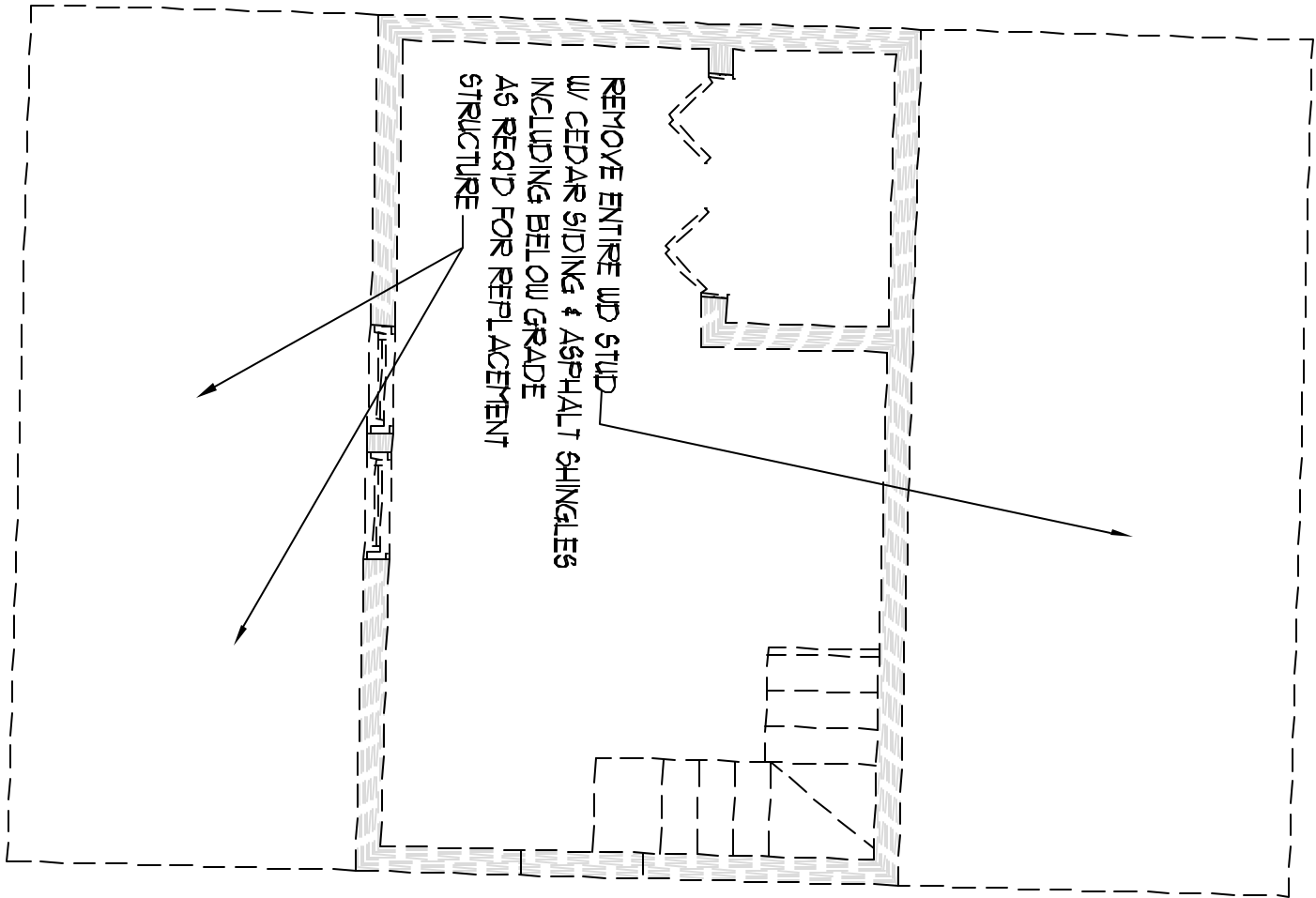
#	DATE	DESCRIPTION
1		Design Review

Date Issued: December 14, 2005  
 Project Number: 050205

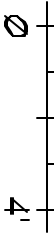
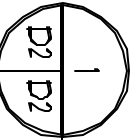
Drawing Title:

**DEMO PLAN FOR  
 SECOND FLOOR**

Drawn By: LAG  
 Checked By: LAG  
**D2**



**SECOND FLOOR DEMO PLAN**



SCALE: 1/4" = 1'-0"