

PORT & GUTZ
ARCHITECTURE
 55 NEWBURY STREET
 PORTLAND, ME 04101
 207.751.9000
 fax 207.751.2010
 info@portandgutz.com

CONSULTANTS

Zakowski & Espino
Residence
 52 Berwick
 Portland, Maine

| NO. | DATE | DESCRIPTION | DESIGNED BY |
|-----|------|---------------|-------------|
| 1 | | DESIGN REVIEW | |
| 2 | | REVISIONS | |
| 3 | | | |
| 4 | | | |
| 5 | | | |
| 6 | | | |
| 7 | | | |
| 8 | | | |
| 9 | | | |
| 10 | | | |

Date Issued: December 14, 2005

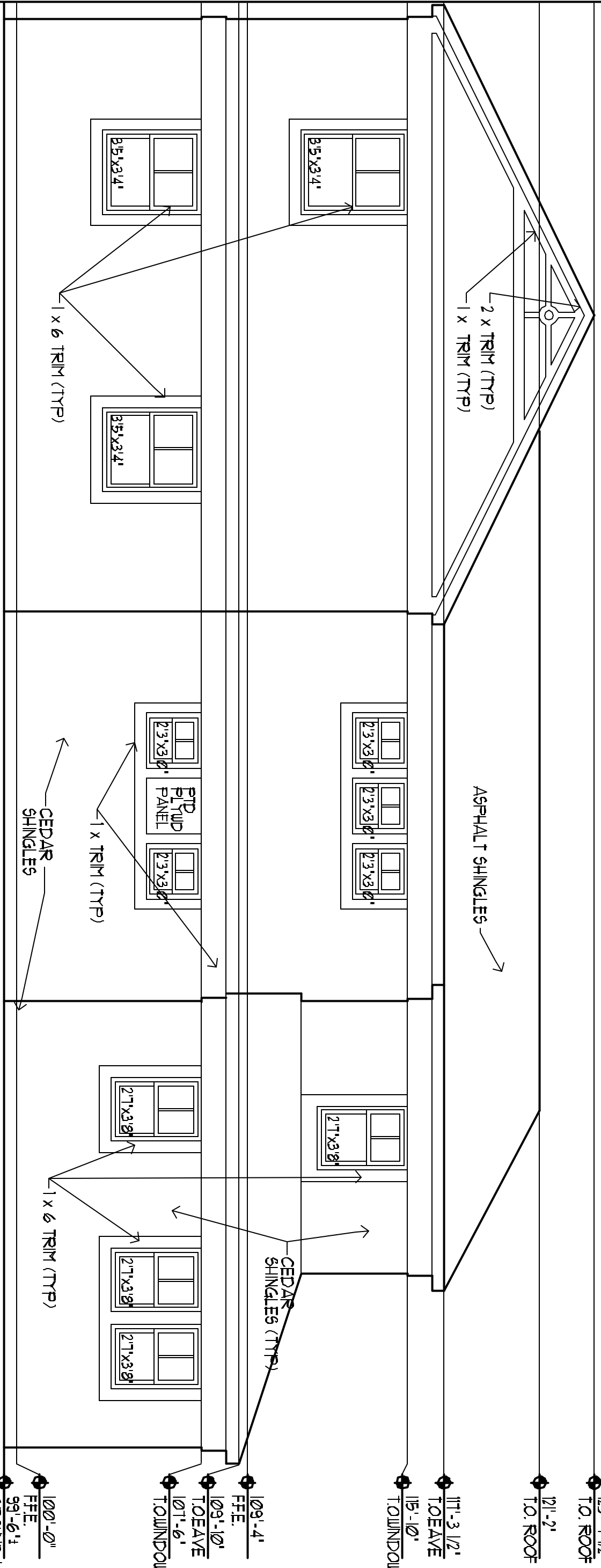
Project Number: 050205

Drawing Title: REAR ELEVATION

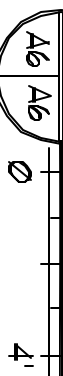
Drawn By: LAG

Checked By: LAG

A6



REAR ELEVATION



SCALE: 1/4" = 1'-0"