

PORT & GUTZ
ARCHITECTURE

55 NEWBURY STREET
PORTLAND, ME 04101
207.751.9000
fax 207.751.2010
info@portandgutz.com

CONSULTANTS

Zukowski & Espino
Residence
52 Berwick
Portland, Maine

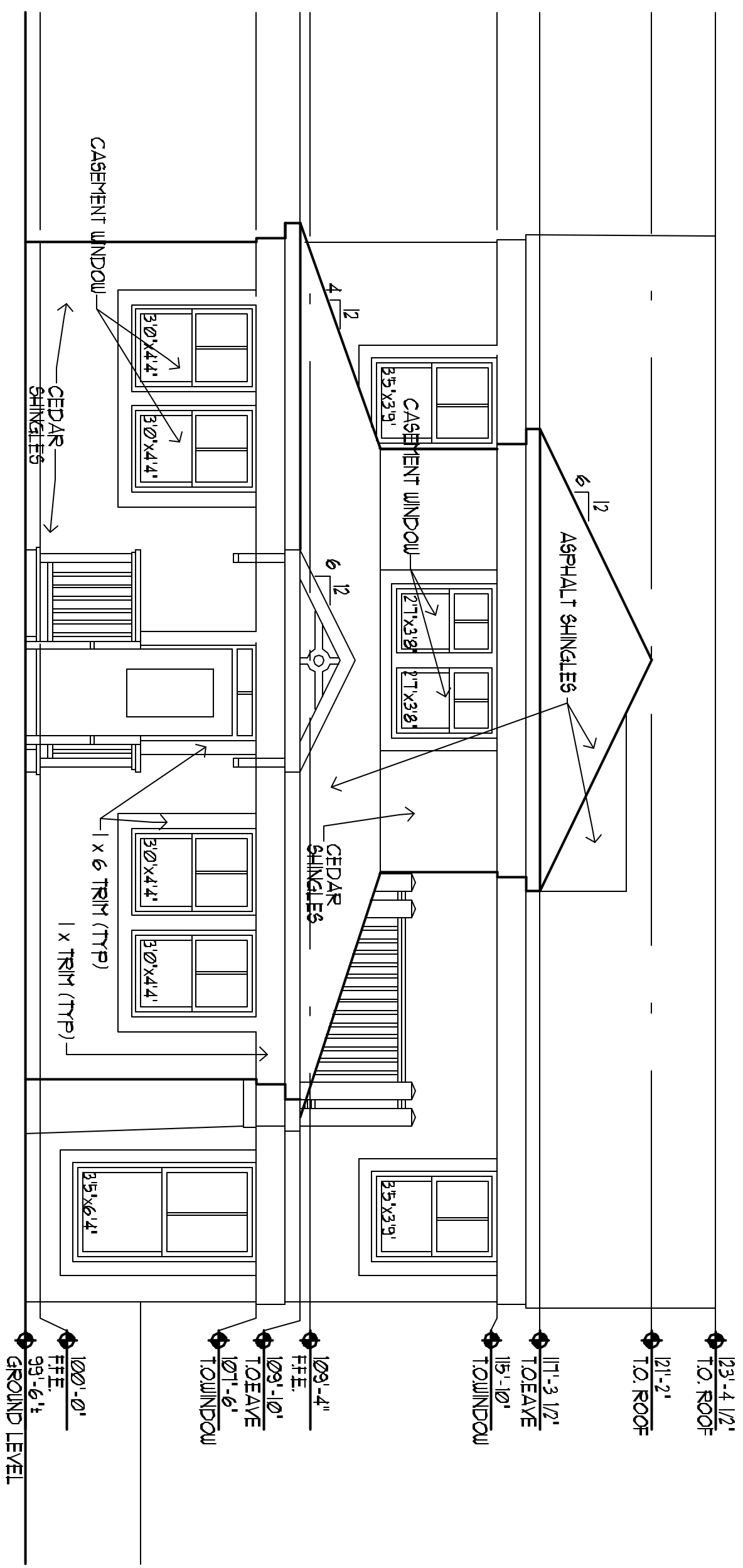
NO.	DATE	DESCRIPTION	DESIGNED BY
1		REVISIONS	

Date Issued: December 14, 2005
Project Number: 0502005

EXTERIOR ELEVATION

Drawn By: LAG
Checked By: LAG
Scale: **A4**

NOTE:
ALL WINDOWS TO BE DOUBLE
HUNG UNLESS NOTED OTHERWISE



STREET ELEVATION

SCALE: 1/4" = 1'-0"