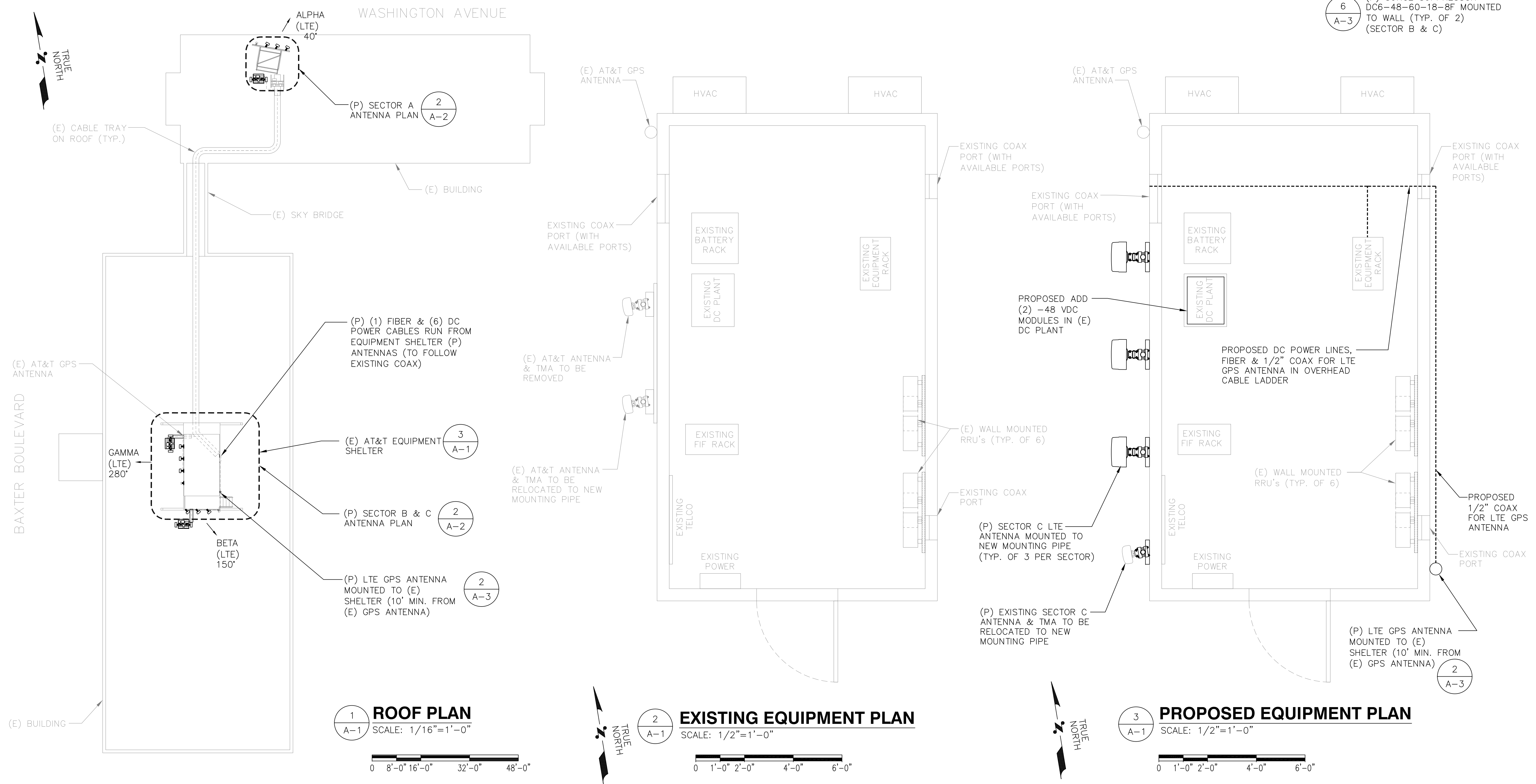


**NOTE:**  
AN ANALYSIS FOR THE CAPACITY OF THE EXISTING STRUCTURES TO SUPPORT THE PROPOSED EQUIPMENT SHALL BE DETERMINED PRIOR TO CONSTRUCTION.

**NOTE:**  
REFER TO THE FINAL RF DATA SHEET FOR FINAL ANTENNA SETTINGS.

**HALF SIZE PRINT**  
THIS DRAWING IS SCALEABLE AT HALF THE NOTED SCALE



**1 ROOF PLAN**  
SCALE: 1/16"=1'-0"  
0 8'-0" 16'-0" 32'-0" 48'-0"

**2 EXISTING EQUIPMENT PLAN**  
SCALE: 1/2"=1'-0"  
0 1'-0" 2'-0" 4'-0" 6'-0"

**3 PROPOSED EQUIPMENT PLAN**  
SCALE: 1/2"=1'-0"  
0 1'-0" 2'-0" 4'-0" 6'-0"

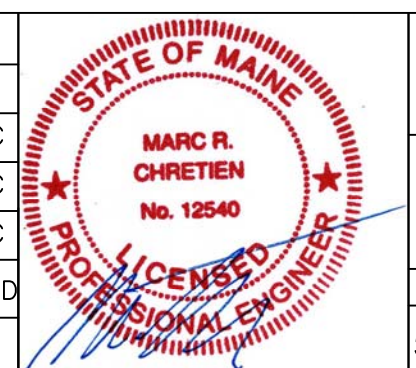
**EG ADVANCED**  
ENGINEERING GROUP, P.C.  
Civil Engineering - Site Development Surveying - Telecommunications  
500 NORTH BROADWAY  
EAST PROVIDENCE, RI 02914  
PH: 401-354-2403  
FAX: 401-633-6354

**smartlink**  
1997 ANNAPOLIS EXCHANGE PARKWAY, SUITE 200  
ANNAPOLIS, MD 21401  
TEL: (410) 263-5465 FAX: (410) 263-5470

**SITE NUMBER: ME5043**  
**SITE NAME: PORTLAND BAXTER BOULEVARD**  
970 BAXTER BOULEVARD  
PORTLAND, ME 04103  
CUMBERLAND COUNTY

**at&t**  
550 COCHITUATE ROAD, SUITE 13,  
FRAMINGHAM, MA 01701-4681

NO.	DATE	REVISIONS	BY	CHK	APP'D
1	03/19/14	FINAL	BDJ	MRC	MRC
0	03/03/14	ISSUED FOR CONSTRUCTION	BDJ	MRC	MRC
A	10/21/13	ISSUED FOR REVIEW	AL	MRC	MRC
SCALE: AS SHOWN		DESIGNED BY: AL	DRAWN BY: AL		



<b>AT&amp;T</b>		
COMPOUND & SHELTER PLANS		
JOB NUMBER	DRAWING NUMBER	REV
5043 LTE	A-1	1