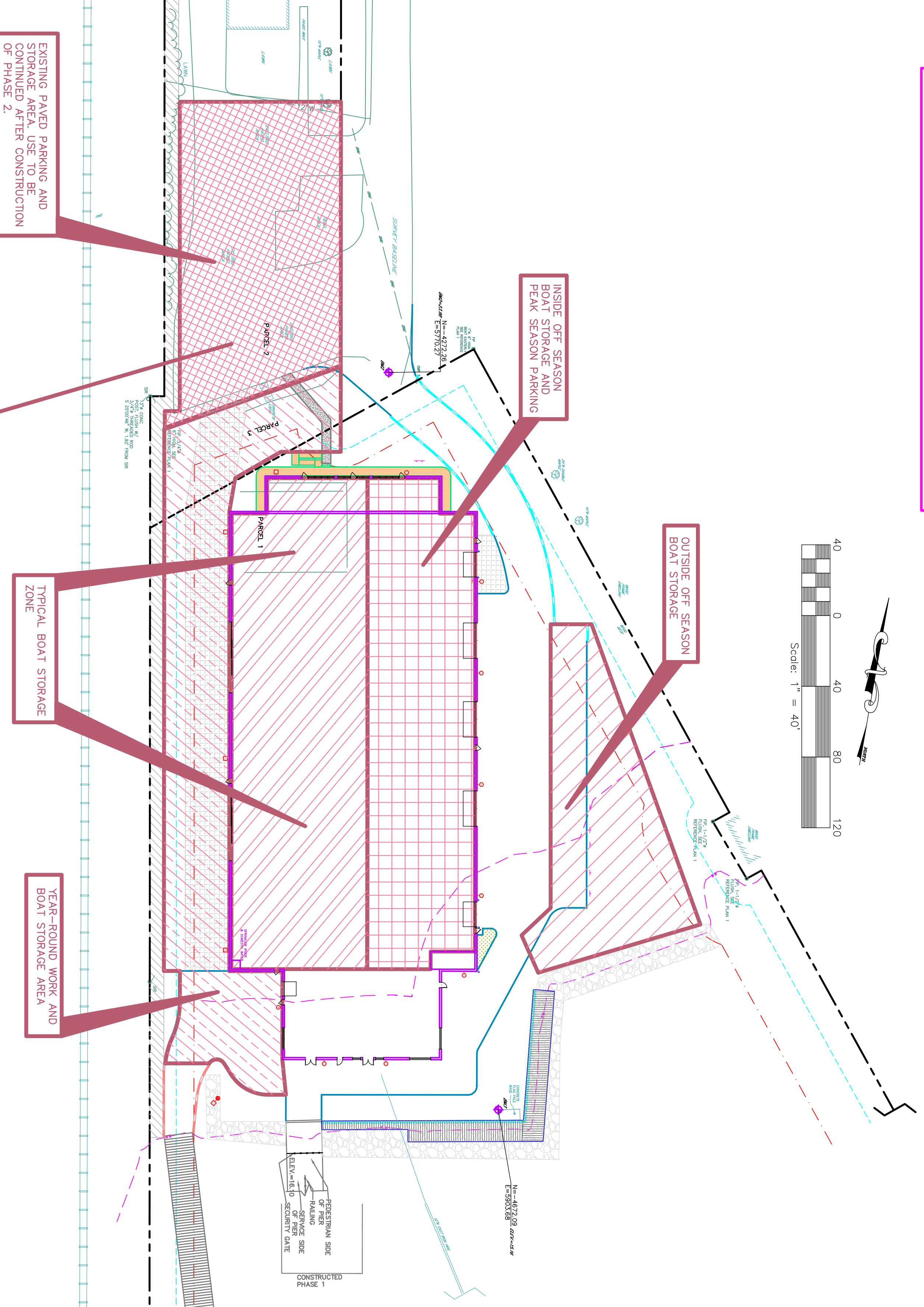


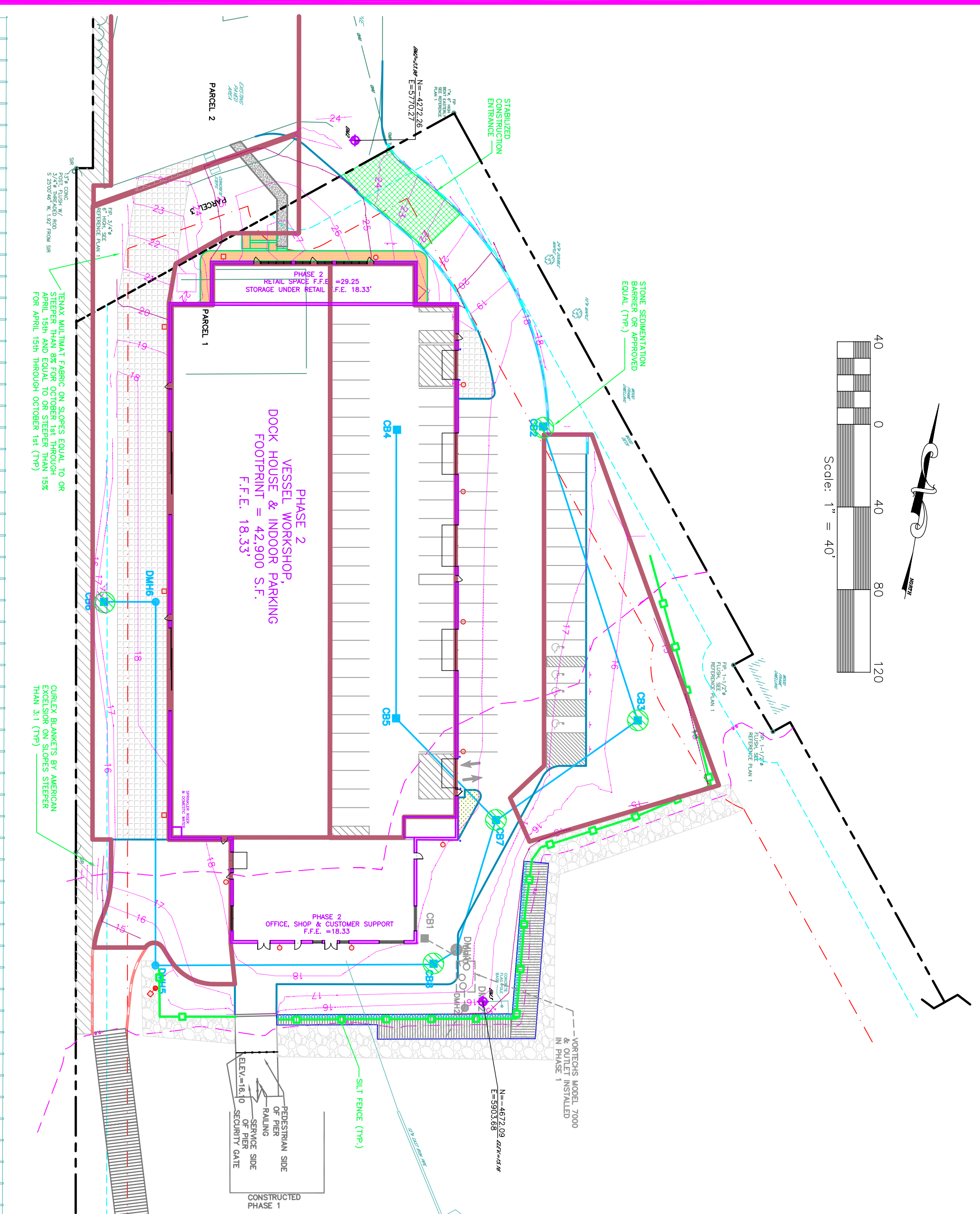
ITEMS MODIFIED ON THIS PLAN #C-107.  
1. PHASE 2 PLANNING BOARD CONDITION # IV NOTE ADDED.



PHASE 2  
OPERATIONS PLAN  
# C-107

OPERATIONS NOTES:  
1. PEAK SEASON MAY 1 - OCTOBER 31. MAY AND OCTOBER ARE TRANSITIONAL MONTHS WHERE THE OFF SEASON BOAT STORAGE AREAS MAY BE USED FOR BOTH PARKING AND STORAGE.  
2. OFF SEASON: NOVEMBER 1 - APRIL 30.

ITEMS MODIFIED ON THIS PLAN #C-106.  
1. ADDED SEDIMENTATION PROTECTION TO CB7 & CB8.



PHASE 2  
EROSION CONTROL PLAN  
# C-106

GENERAL NOTE:  
THIS PLAN DOES NOT DELETE ANY ITEMS REQUIRED BY THE CITY OF PORTLAND AND/OR THE MAINE DEP IN ANY AND ALL APPROVALS FOR THE MAINE YACHT CENTER PHASE 1 & 2. FOR ALL APPROVALS DATED BEFORE 12/1/03, THESE ITEMS HAVE BEEN CARRIED IN THEIR ENTIRETY TO THIS MODIFIED SUBMITTAL.  
ALL ITEMS MODIFIED BY THIS SUBMITTAL TO THE CITY OF PORTLAND ON 5/6/04 ARE THE DESIGN RESPONSIBILITY OF THE ENGINEER WHOSE STAMP IS AFFIXED TO THE DRAWING.

Released For  
Construction  
6-2-04

WARNING: THIS DRAWING IS THE PROPERTY AND INSTRUMENT OF SHERIDAN CORPORATION FOR USE WITH THE PROJECT IDENTIFIED BELOW. NO MODIFICATIONS OR CHANGES MAY BE MADE TO THIS DRAWING AND NO USE MAY BE MADE OF THIS DRAWING WITHOUT THE EXPRESS WRITTEN PERMISSION OF SHERIDAN CORPORATION. ANY MODIFICATION, CHANGE OR USE OF THIS DRAWING WITHOUT THE EXPRESS WRITTEN PERMISSION OF SHERIDAN CORPORATION IS WRONGFUL AND IS AT THE USER'S RISK. SHERIDAN DISCLAIMS ANY AND ALL LIABILITY FOR SUCH USE.