

**GENERAL NOTE:**  
 THIS PLAN DOES NOT DELETE ANY ITEMS REQUIRED BY THE CITY OF PORTLAND AND/OR THE MAINE DEP IN ANY AND ALL APPROVALS FOR THE MAINE YACHT CENTER PHASE 1 & 2. FOR ALL APPROVALS DATED BEFORE 12/1/03.  
 THESE ITEMS HAVE BEEN CARRIED IN THEIR ENTIRETY TO THIS MODIFIED SUBMITTAL.

ALL ITEMS MODIFIED BY THIS SUBMITTAL TO THE CITY OF PORTLAND ON 5/6/04 ARE THE DESIGN RESPONSIBILITY OF THE ENGINEER WHOSE STAMP IS AFFIXED TO THE DRAWING.

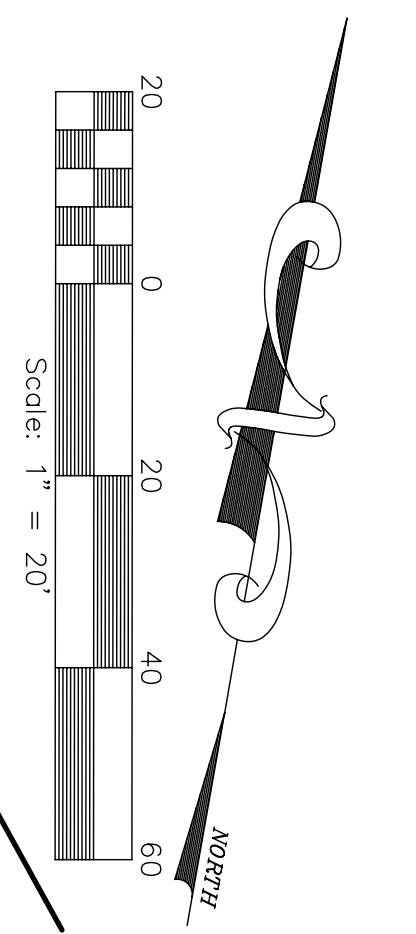
- ITEMS MODIFIED ON THIS PLAN #C-105.
1. NEW BUILDING FOOT PRINT.
  2. ADJUSTED PAVED AREA TO CONFORM TO BUILDING.
  3. BUILDING FINISH FLOOR RAISED 1.83 FEET TO FACILITATE CONSTRUCTION, PER LATEST S.W. COLE SOILS REPORT.
  4. MODIFIED GRADES TO ADJUST FOR NEW FINISHED FLOOR ELEVATION OF THE BUILDING.
  5. BITUMINOUS PAVED RAMP ADDED TO EXISTING PIER TO FACILITATE GRADE CHANGES.
  6. REROUTED CITY OF PORTLAND STORM DRAIN AROUND BUILDING.
  7. RELOCATED CB2, DMH3 CHANGED TO CB7 & DMH4 TO CB8, TO FACILITATE BETTER COLLECTION OF STORM WATER FROM PAVEMENT.
  8. STORM DRAIN SYSTEM ADJUSTED FOR MODIFIED FINISH GRADE.

**NOTE:**  
 TEXT IN THIS COLOR INDICATES RELOCATED CITY OF PORTLAND STORM DRAIN LINE.

**NOTE:**  
 ALL ITEMS LABELLED IN BLUE TEXT ARE MODIFICATIONS TO THE APPROVED SITE PACKAGE PREPARED BY GORRILL-PALMER ENGINEERS.

LUMINAIRE SCHEDULE

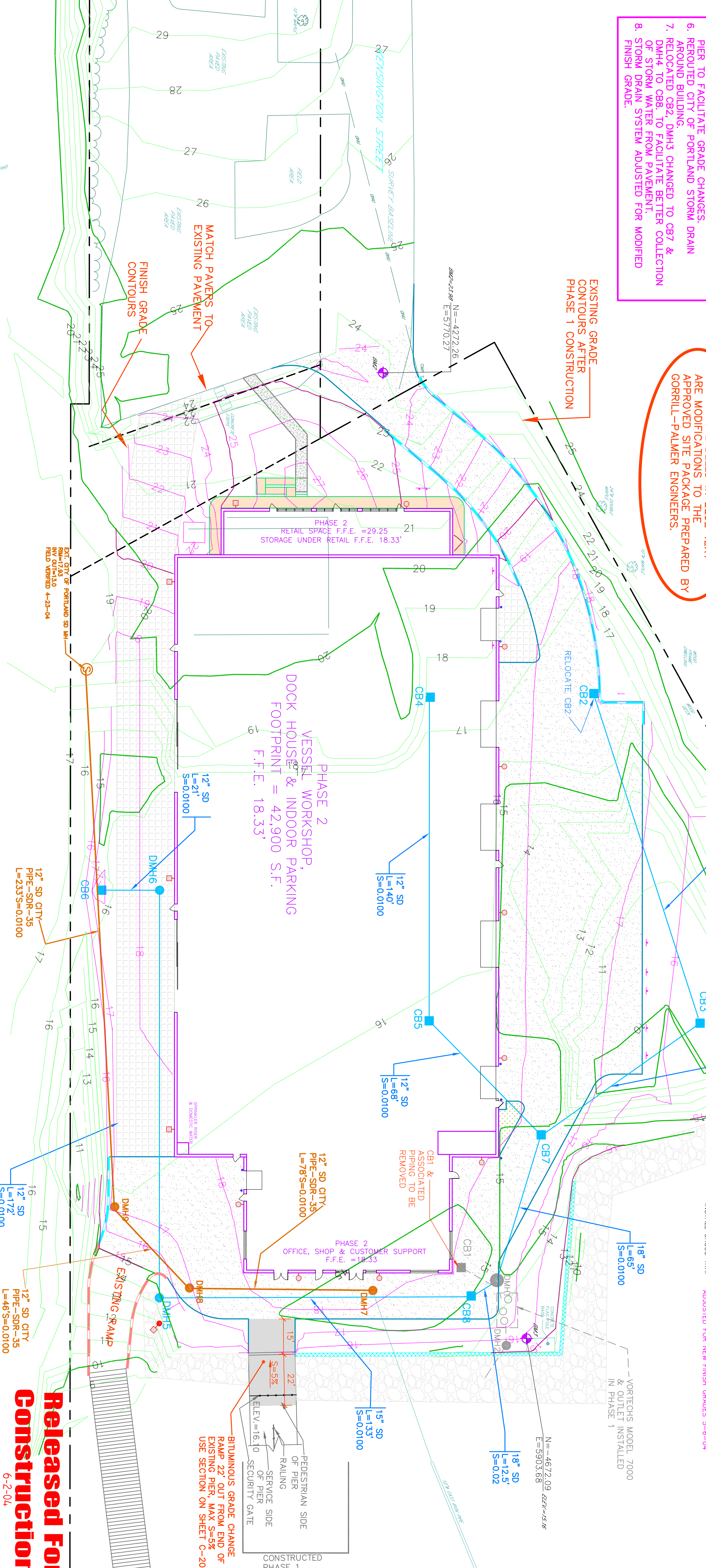
| SYMBOL | QTY. | WATTS | MODEL  | MOUNTING HGT. |
|--------|------|-------|--|---------------|
| ●      | 1    | 150   | LITHONIA CHL 150S R2 FL                      | 20'           |
| ○      | 9    | 100   | LITHONIA KEST 100M R45C                      |               |
| □      | 5    | 150   | LITHONIA CHL 150S R2 FL HIGH PRESSURE SODIUM |               |



PHASE 2 - STORM DRAIN SCHEDULE

| STRUCTURE     | SIZE     | RIM           | INV. IN./DESCR(FOU)  | INV. OUT./DESCR(FOU) | NORTHING | EASTING |
|---------------|----------|---------------|----------------------|----------------------|----------|---------|
| *CB2          | 4"ø      | 17.40         | 13.37/12'(CB3)       | 13.37/12'(CB3)       |          |         |
| CB3           | 4"ø      | 15.30         | 11.88/12'(CB2)       | 11.78/18'(CB7)       |          |         |
| *CB4          | 4"ø      | 17.70         | 14.40/12'(CB5)       | 14.40/12'(CB5)       |          |         |
| *CB5          | 4"ø      | 17.70         | 12.89/12'(CB4)       | 12.79/12'(CB7)       |          |         |
| *CB6          | 4"ø      | 16.80         | 10.95/18'(CB3)       | 13.15/12'(DMH6)      |          |         |
| *CB7          | 4"ø      | 17.7          | 12.19/12'(CB5)       | 10.85/18'(DMH1)      |          |         |
| *CB8          | 4"ø      | 17.50         | 9.69/15'(DMH5)       | 9.59/18'(DMH1)       |          |         |
| DMH6          | 4"ø      | 15.00         | 11.12/12'(DMH6)      | 11.02/15'(CB8)       |          |         |
| DMH8          | 4"ø      | 18.15         | 12.94/12'(CB6)       | 12.84/12'(DMH8)      |          |         |
| DMH1-PHASE 2  | EXISTING | 17.80         | 8.14/15'(CB1) P.U.C. | 8.04/15'(VORTECHS)   |          |         |
| DMH1-PHASE 1  | EXISTING | 9.34/18'(CB8) | 9.34/18'(CB8)        | 8.00/18'(VORTECHS)   |          |         |
| DMH2-PHASE 1  | 4"ø      | 15.75         | 7.96/18'(VORTECHS)   | 4.80/18'(OUTLET)     |          |         |
| VORTECHS 7000 | 15"x9"   | VARIES        | 8.00/15'(DMH1)       | 8.00/18'(DMH2)       |          |         |
| DMH7          | 4"ø      | 18.15         | 9.24/12'(DMH8)       | 1.10/12'             |          |         |
| DMH8          | 4"ø      | 17.00         | 10.12/12'(DMH9)      | 10.69/12'            |          |         |
| DMH9          | 4"ø      | 17.00         | 10.12/12'(DMH9)      | 10.02/12'(DMH7)      |          |         |
| DMH9          | 4"ø      | 17.00         | 10.58/12'(DMH8)      | 10.58/12'(DMH8)      |          |         |

\*INSTALL CASPO TRAP ADJUSTED FOR NEW FINISH GRADES 5-6-04



**Released For Construction**  
 6-2-04