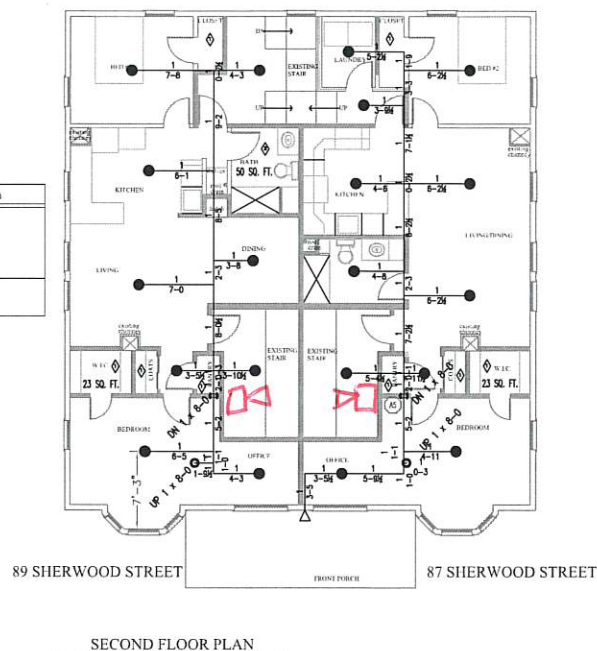
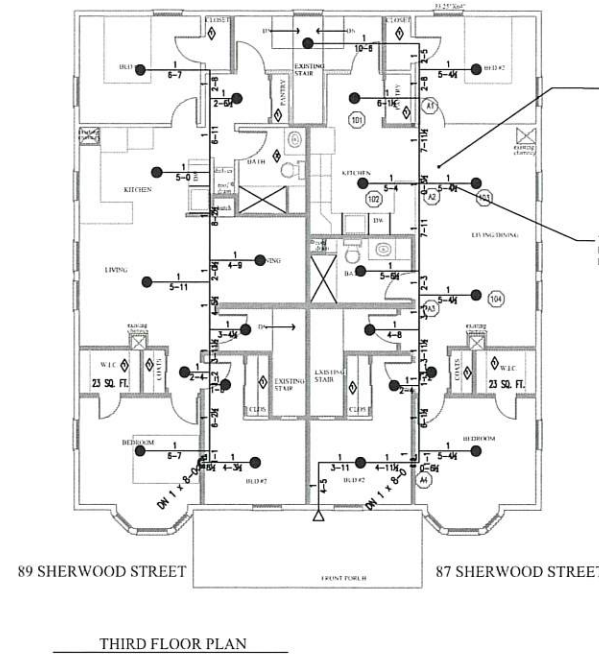


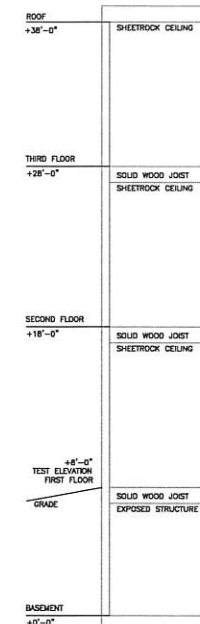
HYDRAULIC CALCULATION DATA	
DESIGN AREA NUMBER:	2
DESIGN AREA LOCATION:	1ST FLOOR
HAZARD/OCCUPANCY:	13R RESIDENTIAL
DESIGN DENSITY:	.25
DESIGN AREA:	4 HEADS
SPRINKLER SPACING:	16'x16'
TOTAL FLOW:	183.1 GPM
SYSTEM DEMAND PRESSURE:	42.6 PSI
SAFETY MARGIN:	52.3 PSI



HYDRAULIC CALCULATION DATA	
DESIGN AREA NUMBER:	3
DESIGN AREA LOCATION:	BASEMENT
HAZARD/OCCUPANCY:	13R RESIDENTIAL
DESIGN DENSITY:	.15
DESIGN AREA:	10 HEADS
SPRINKLER SPACING:	130 SQ. FT.
TOTAL FLOW:	239.8 GPM
SYSTEM DEMAND PRESSURE:	76.3 PSI
SAFETY MARGIN:	18.6 PSI



HYDRAULIC CALCULATION DATA	
DESIGN AREA NUMBER:	1
DESIGN AREA LOCATION:	3RD FLOOR
HAZARD/OCCUPANCY:	13R RESIDENTIAL
DESIGN DENSITY:	.25
DESIGN AREA:	4 HEADS
SPRINKLER SPACING:	16'x16'
TOTAL FLOW:	89.5 GPM
SYSTEM DEMAND PRESSURE:	73.6 PSI
SAFETY MARGIN:	21.4 PSI



SECTION
SCALE: 1/4" = 1'-0"

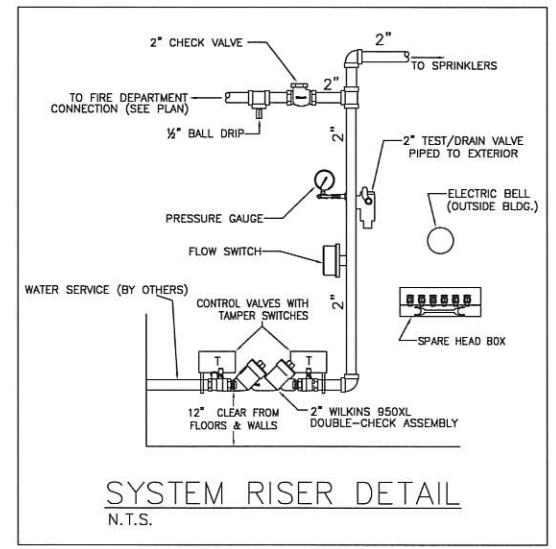
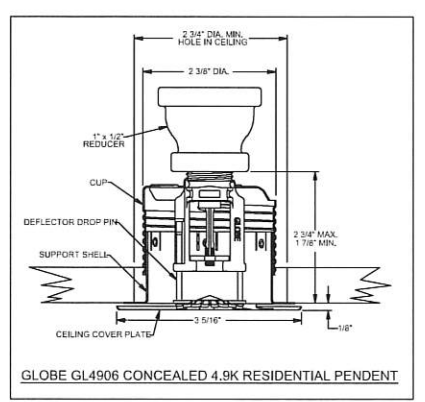
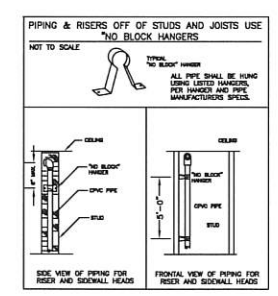
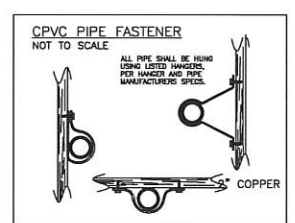
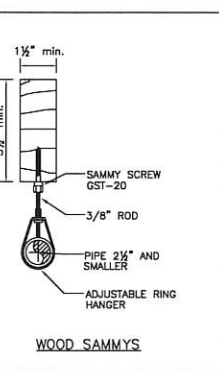
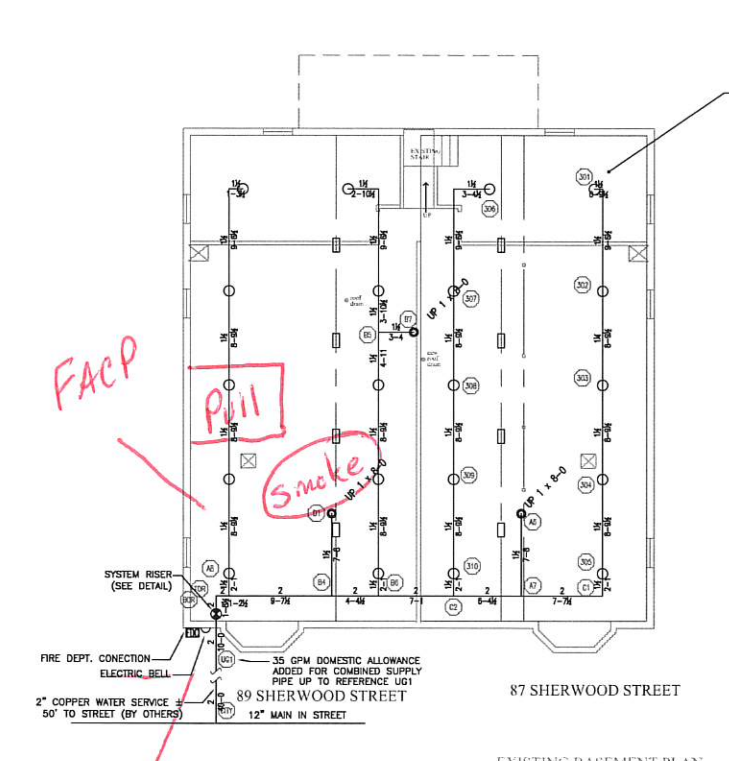
annunciator

SPRINKLER MONITORING SYSTEM ONLY.



Reviewed for Code Compliance
Permitting and Inspections Department
Approved with Conditions
02/13/2020

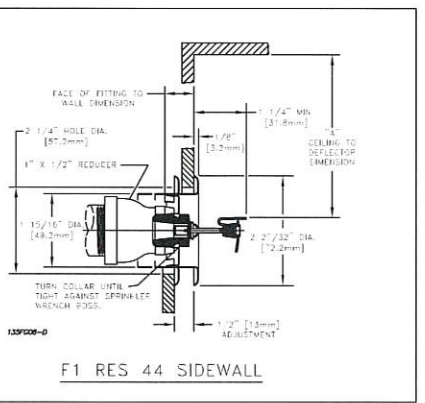
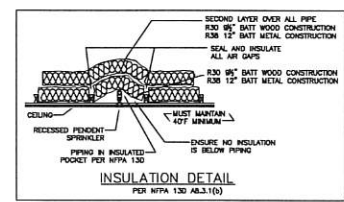
- GENERAL NOTES:**
- OWNER TO PROVIDE SUFFICIENT HEAT TO PREVENT WATER-FILLED SPRINKLER PIPING FROM FREEZING
 - OWNER TO MAINTAIN SYSTEM TO NFPA 13R STANDARDS
 - HANGERS AND SUPPORTS TO BE INSTALLED PER NFPA 13R AND MANUFACTURERS INSTALLATION RECOMMENDATIONS
 - FLOW SWITCH AND TAMPER SWITCHES TO BE WIRED TO CENTRAL MONITORING SYSTEM BY OTHERS
 - BUILDING IS OF COMBUSTIBLE CONSTRUCTION
 - PLAN IS SUBJECT TO MINOR DEVIATIONS DUE TO SITE CONDITIONS AND/OR TRADE COORDINATION. DEVIATIONS SHALL NOT AFFECT SCOPE OF WORK OR CODE COMPLIANCE
- DESIGN CRITERIA:**
- WORKMANSHIP, MATERIAL, AND DESIGN SHALL CONFORM TO NFPA 13R STANDARDS (2016 ED.) AND LOCAL REGULATIONS
- PIPE SIZED BY HYDRAULIC CALCULATIONS AS PER NFPA 13R
- MATERIAL:**
- 1ST, 2ND, 3RD FLOORS: CPVC
BASEMENT: SCHEDULE 40 BLACK STEEL
UNLESS NOTED OTHERWISE
- WATER SUPPLY:**
- SUPPLY TYPE: MUNICIPAL WATER
STATIC PRESSURE: 95 PSI
RESIDUAL PRESSURE: 91 PSI
FLOW: 1403 GPM
DATE: 10/23/2019
INFO. BY: PORTLAND WATER
- KEYED NOTES:**
- SPRINKLERS ARE NOT REQUIRED IN CLOSETS AND PANTRIES PER THE CONDITIONS OF NFPA 13R-B.3.3
 - SPRINKLERS ARE NOT REQUIRED IN BATHROOMS UNDER 55 FT² PER NFPA 13R-B.3.2
 - SPRINKLERS ARE NOT REQUIRED IN GARAGES AND PORCHES PER NFPA 13R-B.3.4
 - SPRINKLERS ARE NOT REQUIRED IN ATTICS PER THE CONDITIONS OF NFPA 13R-B.3.5



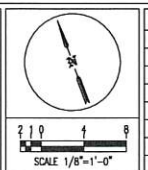
SYSTEM RISER DETAIL
N.T.S.

FACP
Pull
Smoke
Extensor Horn / Strabe

EXISTING BASEMENT PLAN



Systematic Sprinkler Company
423 Sabbathday Road
New Gloucester, ME 04260
systematicsprinkler@gmail.com
ME Contractor License: #FSC1107
ME RMS: Jeffrey Denis #RMS326



LEGEND	
(O)	HYDRAULIC REFERENCE POINTS
—	HANGER LOCATION
—	PIPE RISE/DROP
[0-0]	CENTER OF PIPE ABOVE FLOOR (ft-in)
[0-BLS]	CENTER OF PIPE FROM BOTTOM OF DECK (ft)
---	EXISTING PIPE TO REMAIN
---	NEW PIPE INSTALLATION
(-)	CEILING HEIGHT (ft-in)

SPRINKLER INFORMATION										
TOTAL HEADS THIS JOB: 87										
TYPE	UNIT	POSITION	FINISH	TEMP	K	NPT	SEN	MFG.	MODEL	
●	55	CON.	PEND.	WHITE	155	4.8	1/2"	GL4906	GLOBE	GL4906
●	9	SIDEWALL	WHITE	155	4.4	1/2"	R3531	RELIABLE	F1R644	
○	20	UPRIGHT	WHITE	155	5.6	1/2"	R3531	RELIABLE	F1R556	
◁	3	DRY SIDEWALL	CHROME	200	5.6	1"	RA1694	RELIABLE	DH56	

87 SHERWOOD STREET PORTLAND, ME		SCALE: 1/8"=1'-0"
DRAWN BY: TJD		DATE: 10/15/19
JOB NUMBER: D019033		
SHEET NUMBER: FP1 of 1		
CONTRACT WITH		REVISIONS
NO.	DATE	DESCRIPTION