

Existing Building

Foundation Plan

Scale $\frac{1}{2}'' = 1'$

House

Deck

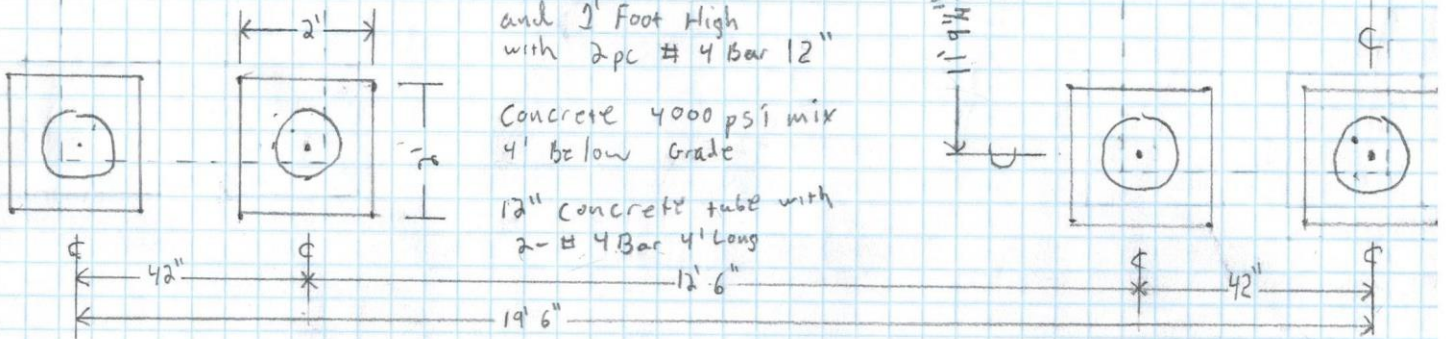
3"

Note

Each Footing $2' \times 2'$ wide
and 1' Foot High
with 2pc #4 Bar 12"

Concrete 4000 psi mix
4' below grade

12" concrete tube with
2-#4 Bar 4' Long



42"

12' 6"

19' 6"

12' 6"

42"

11' 9 1/4"

A

C

C

C