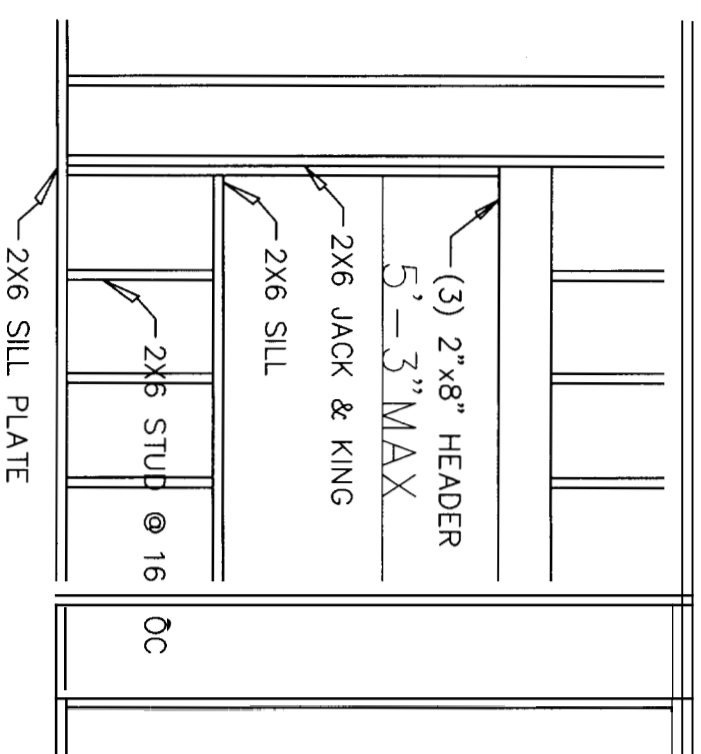
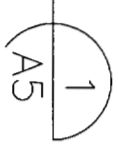


1-2) 2x6 TOP PLATE

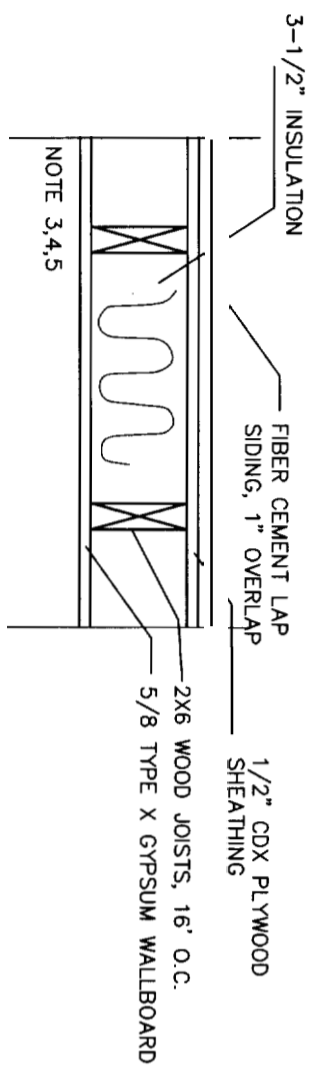


DETAIL 1

SCALE : NTS

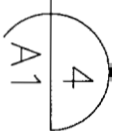


TYPICAL STUDS & HEADER  
AROUND WALL OPENINGS



DETAIL 4

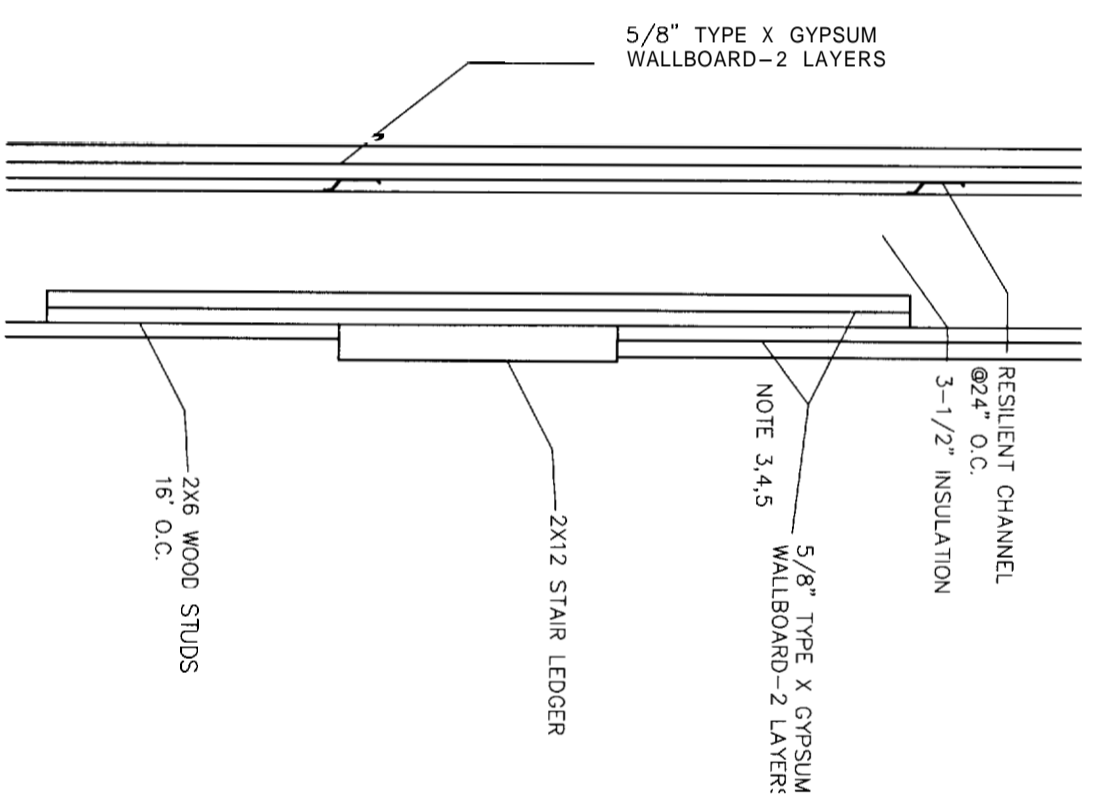
SCALE : NTS



TYPICAL EXTERIOR FIRE WALL  
TYPICAL STAIR ELEVATION FIREWALL SYSTEM

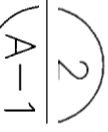
1 HOUR FIRE RATING BOTH SIDES  
UL 263 RATING / UL DESIGN U356

FIBER CEMENT SIDING HAS A FLAME SPREAD OF 0 AND A SMOKE SPREAD OF 5 IAW ASME E84. PRODUCT IS CLASSIFIED AS NONCOMBUSTIBLE IAW ASTM E136. UL 263 RATED (ASTM E136 / NFPA 251).



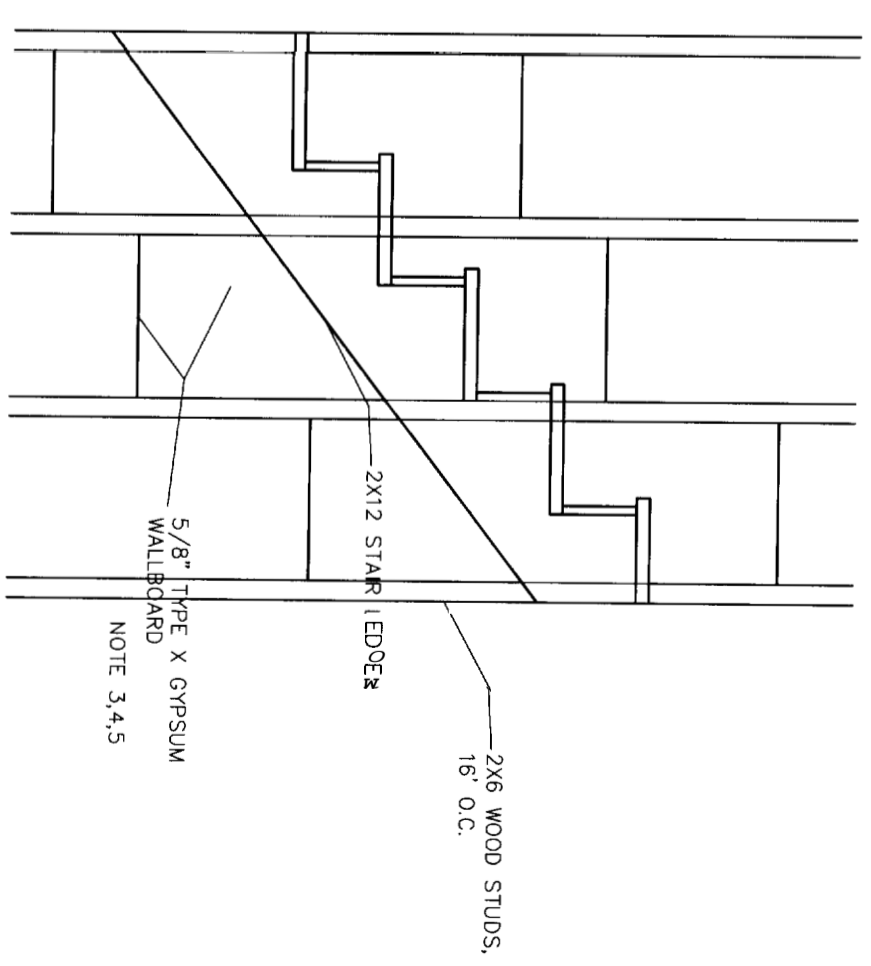
DETAIL 2

SCALE NTS



TYPICAL STAIR ELEVATION FIREWALL SYSTEM  
2 HOUR FIRE AND STC 50 SOUND RATING  
UL 263 RATING / UL DESIGN U334

- GENERAL NOTES:
- SUBSTITUTE MATERIALS AND/OR SIZES AND GRADES PER CONTRACTOR'S SPECIFICATIONS.
  - CONT. TO VERIFY ALL MATERIALS/SPANS PER MANUFACTURER'S SPECIFICATIONS PRIOR TO CONSTRUCTION.
  - TWO LAYERS 5/8" TYPE X GYPSUM WALLBOARD APPLIED AT RIGHT ANGLES TO RESILIENT FURRING CHANNELS 24" O.C. WITH 1" TYPE S DRYWALL SCREWS 12" O.C.
  - RESILIENT FURRING CHANNELS APPLIED AT RIGHT ANGLES TO 2X10 WOOD JOISTS 16" O.C. WITH 6D COATED NAILS, 2" LONG, 0.113" SHANK, 17/64" HEAD.
  - CALK OPENINGS AROUND PIPES, FIXTURES, AND OTHER ITEMS PROJECTING THROUGH FIRE RATED GYPSUM ASSEMBLY'S FIRE TYPE F FIRE RATED CALK. UL 1479 LISTED.

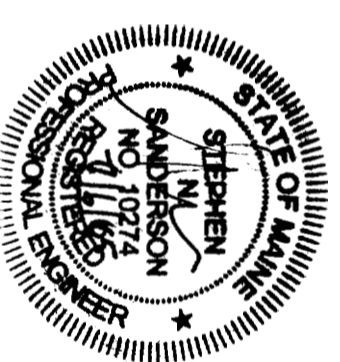


DETAIL 3

SCALE : NTS

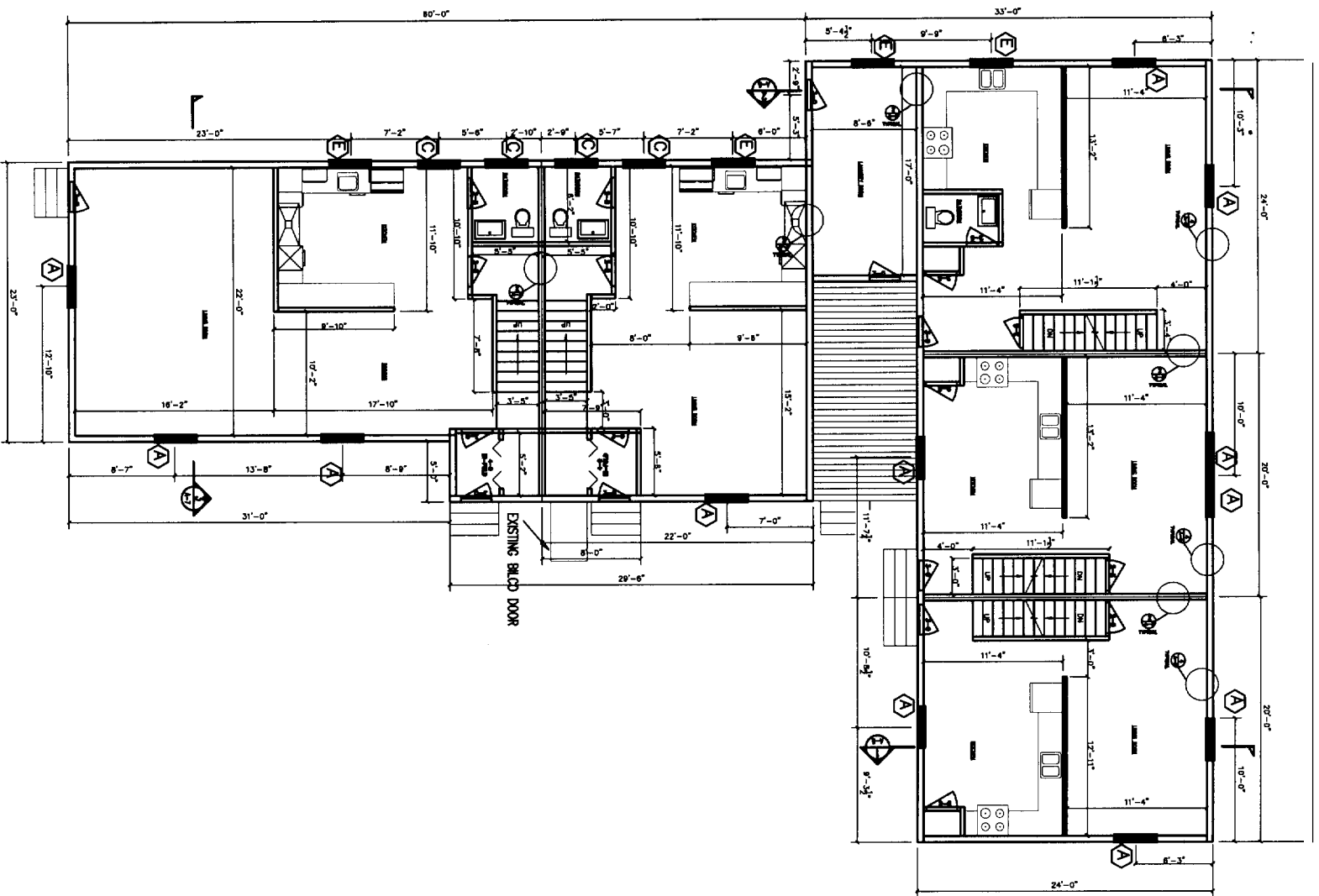


TYPICAL STAIR ELEVATION FIREWALL SYSTEM  
2 HOUR FIRE AND STC 50 SOUND RATING  
UL 263 RATING / UL DESIGN U334

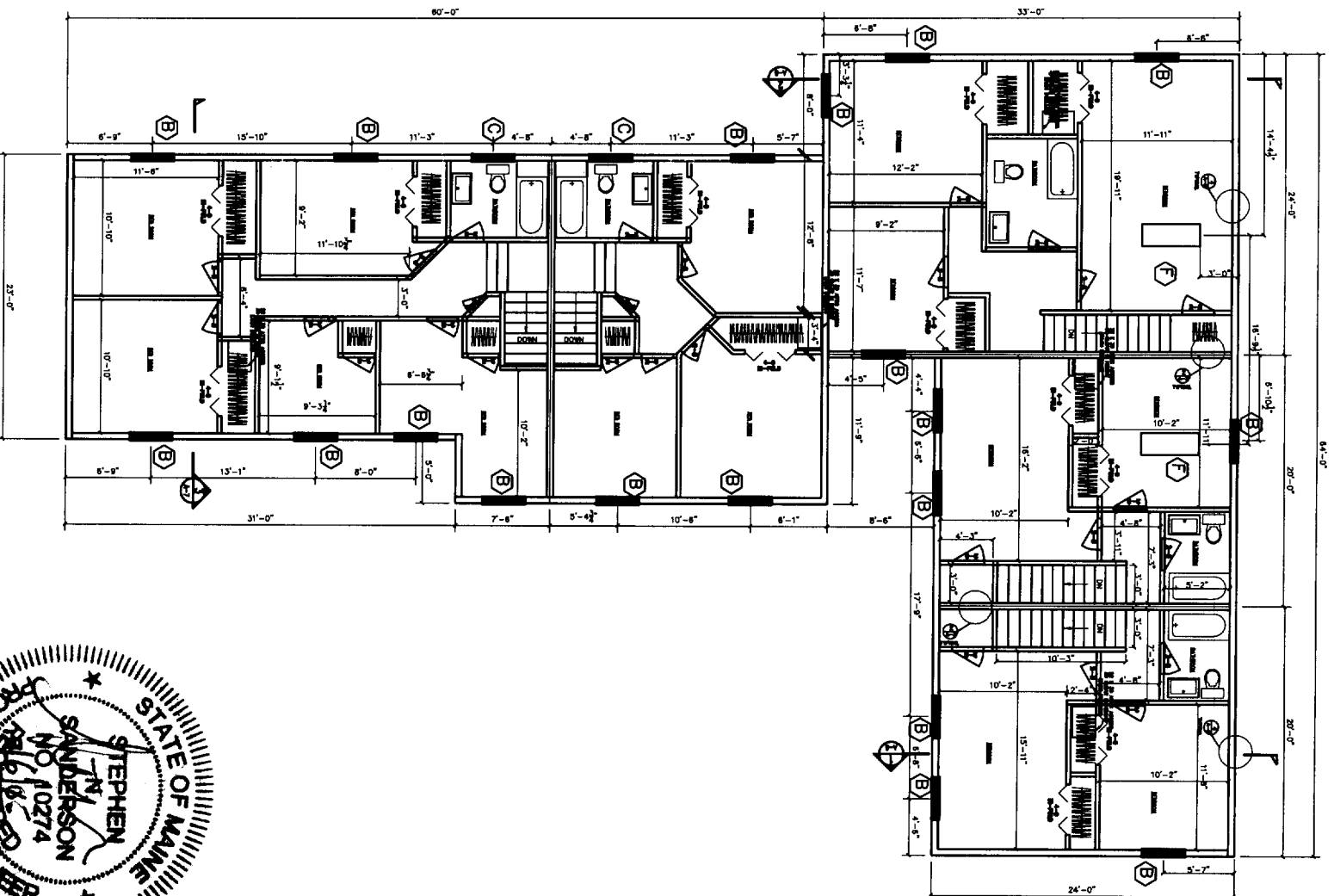


CLIENT		115 SHERWOOD STREET	
PROJECT NAME		MISC. DETAILS	
DRAWN BY		SMS	
SCALE		AS NOTED	
DATE		4-15-06	
DRAWING NUMBER		A-6	
REV.	DATE	DESCRIPTION	
C	7/06/05	AMENDMENTS	
B	4/15/06	FOR APPROVAL	
A	5/05/06	FOR APPROVAL	





FIRST FLOOR PLAN



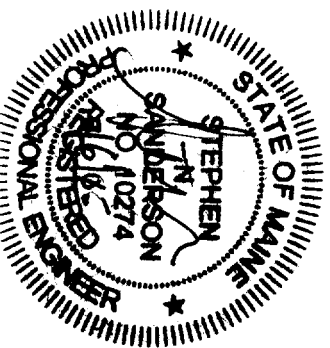
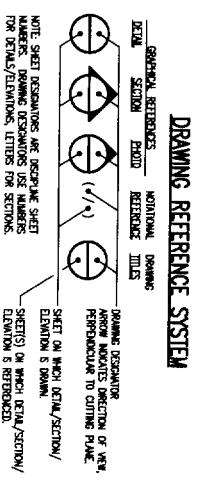
SECOND FLOOR PLAN

- GENERAL NOTES:
1. SUBSTITUTE MATERIALS AND/OR SIZES AND GRADES PER CONTRACTOR'S SPECIFICATIONS.
  2. CONT. TO VERIFY ALL MATERIALS/SPANS PER MANUFACTURER'S SPECIFICATIONS PRIOR TO CONSTRUCTION.

DOOR SCHEDULE			
SYMB	MODEL NUMBER	MANUFACTURER	NOMINAL SIZE
1	4LT	STANLEY	3'-0" x 8'-0"
2	28" x 80"	MASONITE	2/8" x 80"
3	24" x 80"	MASONITE	2/4" x 80"
4	-	-	-
5	-	-	-

WINDOW SCHEDULE			
SYMB	MODEL NUMBER	MANUFACTURER	STYLE
A	SERIES 1000 NO 46 1/4" X 89 1/4"	AMERICAN CRAFTSMAN	DOUBLE-HUNG
B	SERIES 1000 NO 46 1/4" X 53 1/4"	AMERICAN CRAFTSMAN	DOUBLE-HUNG
C	SERIES 1000 NO 64 1/2" X 53 1/4"	AMERICAN CRAFTSMAN	DOUBLE-HUNG
D	SERIES 2804 NO 64 1/2" X 47 1/2"	AMERICAN CRAFTSMAN	SLIDING WINDOW
E	SERIES 2802 NO 36 1/2" X 35 1/2"	AMERICAN CRAFTSMAN	SLIDING WINDOW
F	VS 106 NO 21 1/2" X 46 7/8"	VELUX	VENTILATING SKYLIGHT

- LEGEND
- ⊗ WINDOW TYPE (SEE SCHEDULE)
  - ⊗ DOOR TYPE (SEE SCHEDULE)



CLIENT: 115 SHERWOOD STREET, PORTLAND, MAINE

PROJECT: RECONFIGURED FLOOR PLAN, 5 UNIT REMODEL

DATE: 04-15-05

SCALE: AS NOTED

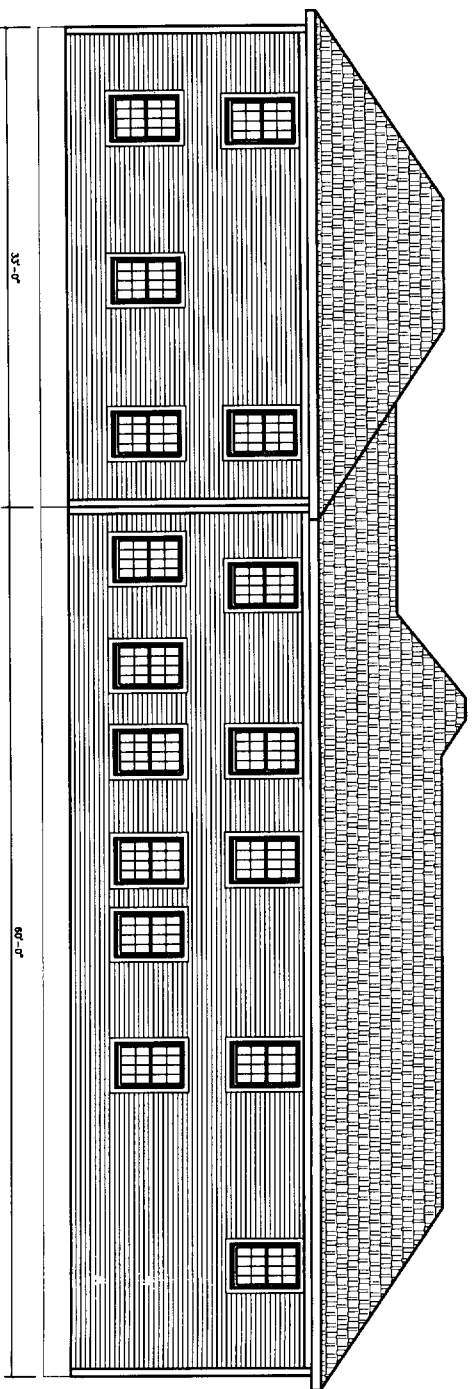
DRAWN BY: SMS

FOR APPROVAL: [Signature]

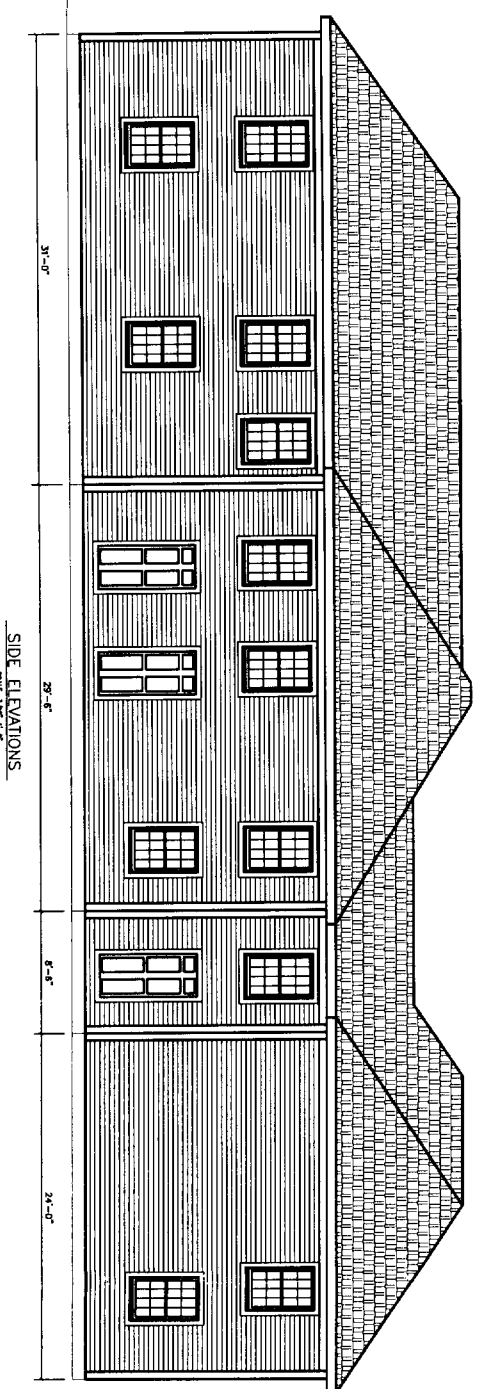
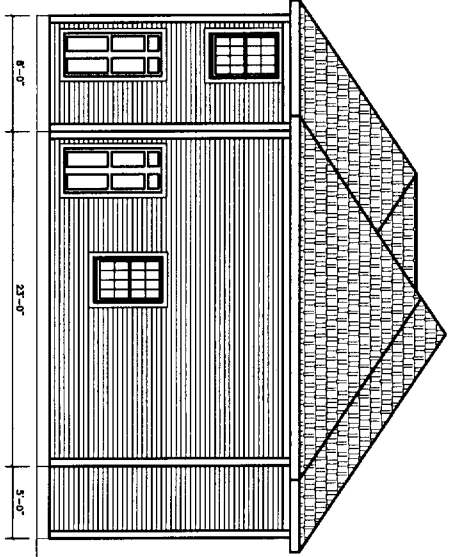
DATE: 5/05/05

REV. A

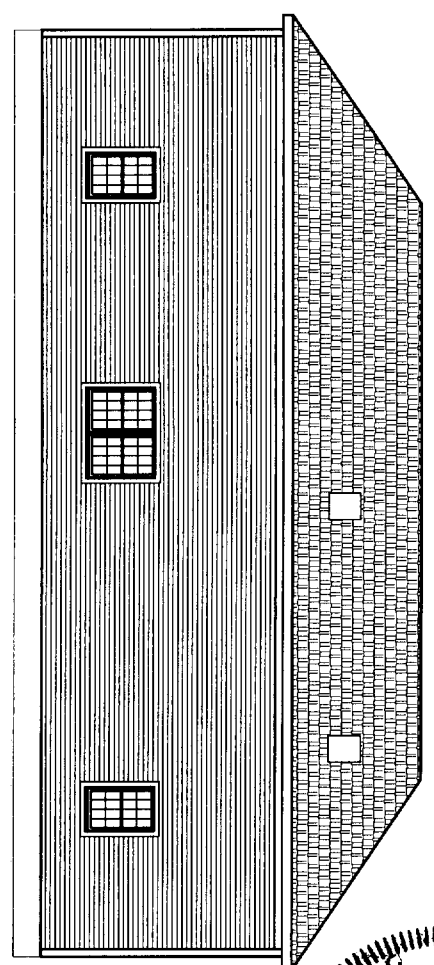
DESCRIPTION: DRAWING NUMBER A-1



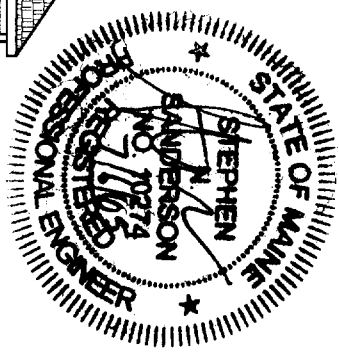
FRONT ELEVATION  
SCALE 1/8"=1'-0"



SIDE ELEVATIONS  
SCALE 1/8"=1'-0"



REAR ELEVATION  
SCALE 1/8"=1'-0"



CLIENT		115 SHERWOOD STREET	
PORTLAND, MAINE			
PROJECT		5 UNIT REMODEL	
DRAWN BY:		SRS	
SCALE:		AS NOTED	
DATE:		4-15-05	
DRAWING NUMBER		A-4	
REV		DATE	
C	7/06/05	AMENDMENTS	
B	6/13/05	FOR APPROVAL	
A	5/05/05	FOR APPROVAL	
		DISCREPANCY	

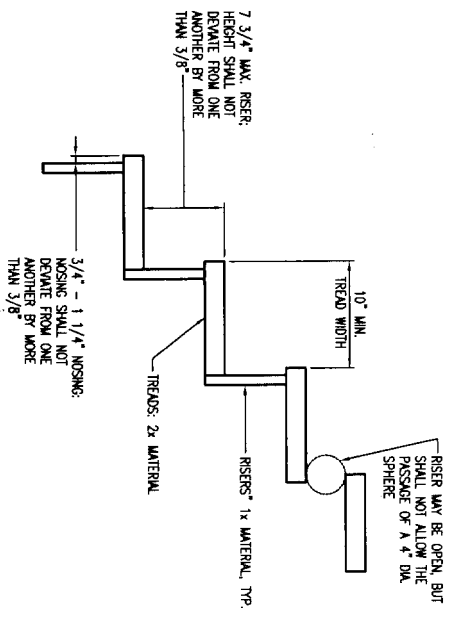


FIGURE 16: TREAD AND RISER DETAIL  
SCALE: 1 1/2"=1'-0"

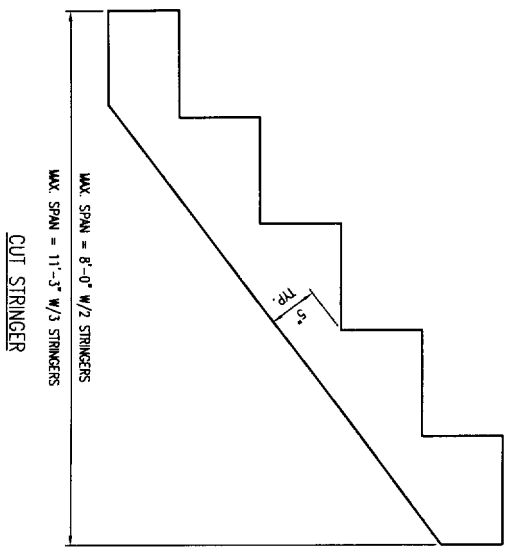


FIGURE 17: STAIR STRINGER REQUIREMENTS  
SCALE: 1 1/2"=1'-0"

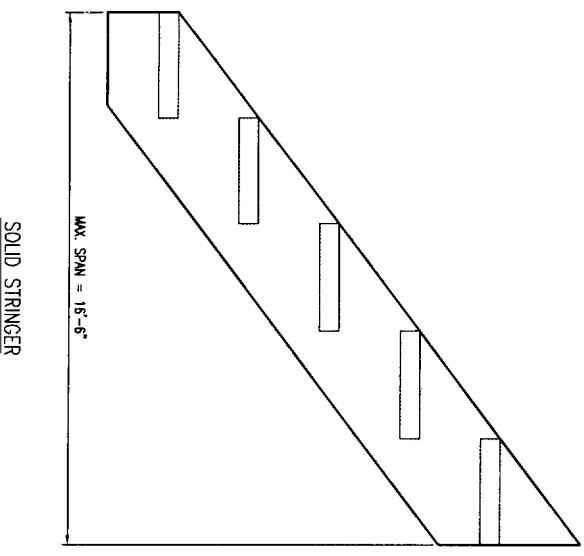


FIGURE 18: TREAD CONNECTION REQUIREMENTS  
SCALE: 1 1/2"=1'-0"

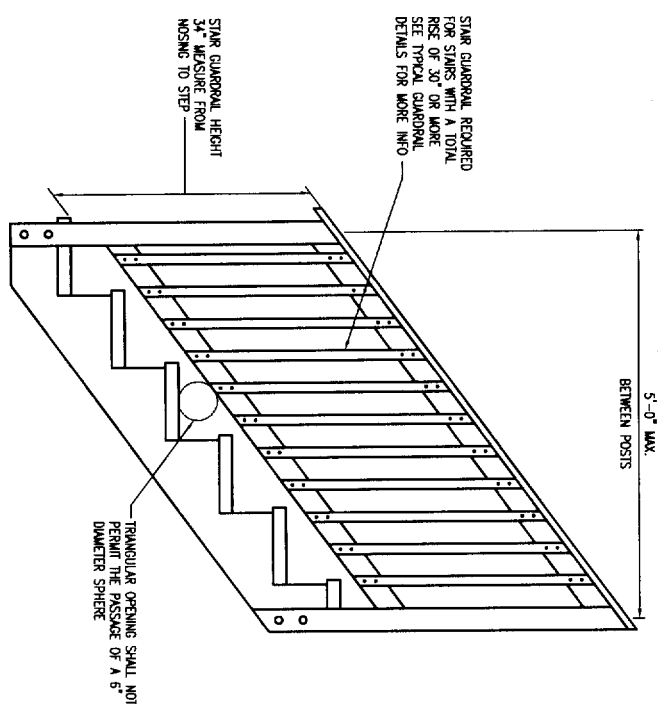
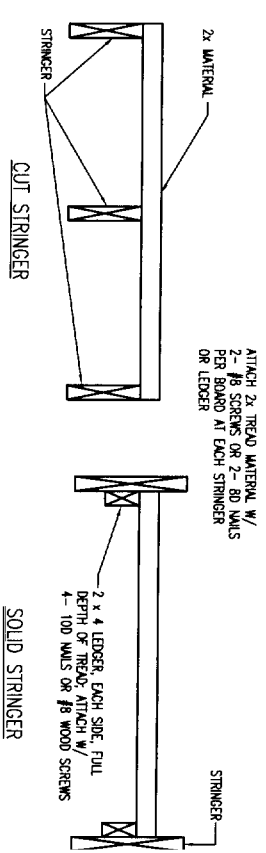


FIGURE 19: STAIR GUARD REQUIREMENTS  
SCALE: 1"=1'-0"

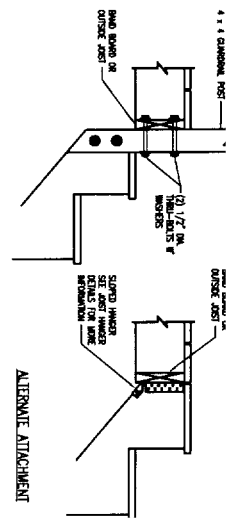


FIGURE 20: STAIR STRINGER CONNECTION DETAIL  
SCALE: 1"=1'-0"

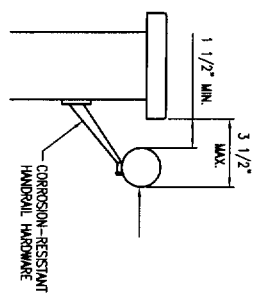


FIGURE 21: HANDRAIL REQUIREMENTS  
SCALE: 1"=1'-0"

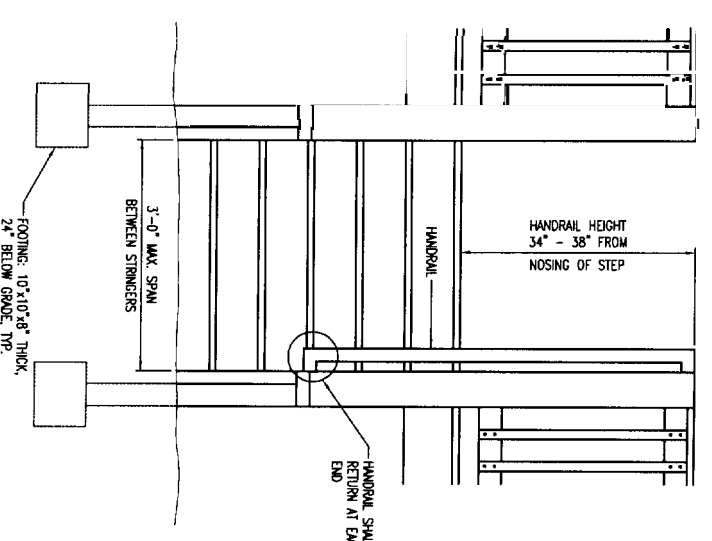
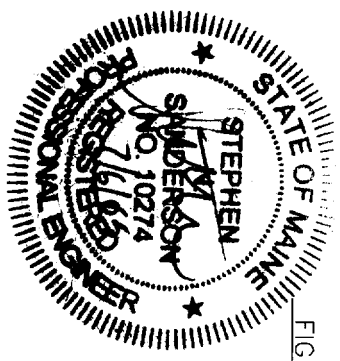


FIGURE 22: MISCELLANEOUS & AIR REQUIREMENTS  
SCALE: 1 1/2"=1'-0"



CLIENT	115 SHERWOOD STREET PORTLAND, MAINE	
DRAWN BY:	SMS	
SCALE:	AS NOTED	
DATE:	06-30-04	
REVISIONS		
REV.	DATE	DESCRIPTION
A	9/13/05	AMENDMENTS FOR APPROVAL
B	7/06/05	
DRAWING NUMBER		A-9