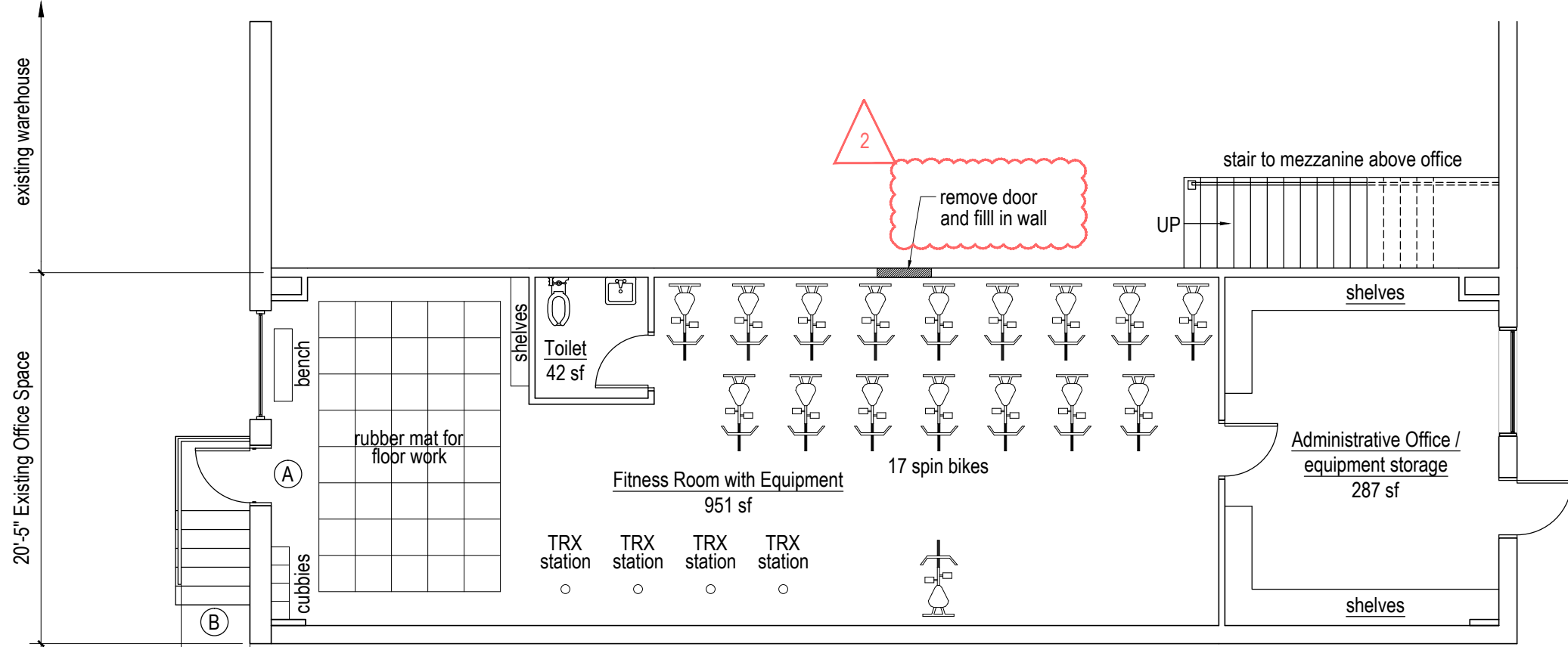
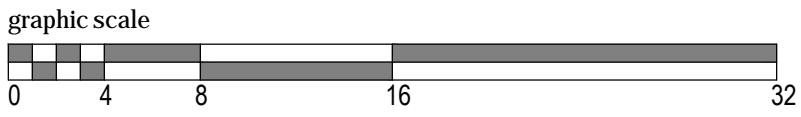


typical TRX installation (for reference only)



Egress Capacity:  
 A: 33 1/2 clear wide door = W/.3 = 111  
 B: 3-9 wide stair = W/.2 = 150  
 Egress capacity exceeds occupant load

**Occupant Load Plan & Egress Capacity**  
 1/8" = 1'-0"



added equipment layout

Occupant Loads by calculation:	22
Fitness Room with equipment:	19 (1 per 50 per NFPA table 7.3.1.2)
Business Office:	2 (1 per 100)
Occupant load by design (note1):	49
Fitness Room with equipment:	47
Business Office:	2 (1 per 100)

Note 1: Occupant load for this project shall be 49  
 7.3.1.2 Occupant Load Factor: The MINIMUM occupant load shall be not less than the values shown in Table 7.3.1.2  
 7.3.1.3 Occupant Load Increases  
 The occupant load shall be permitted to be increased where other requirements of the code such as egress width, travel distance, and number of exits is met

Revision 11-29-2017  
 Added equipment layout and notes per Fire Department's comments