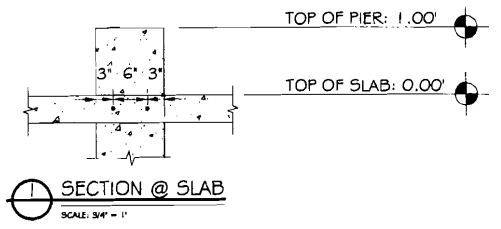
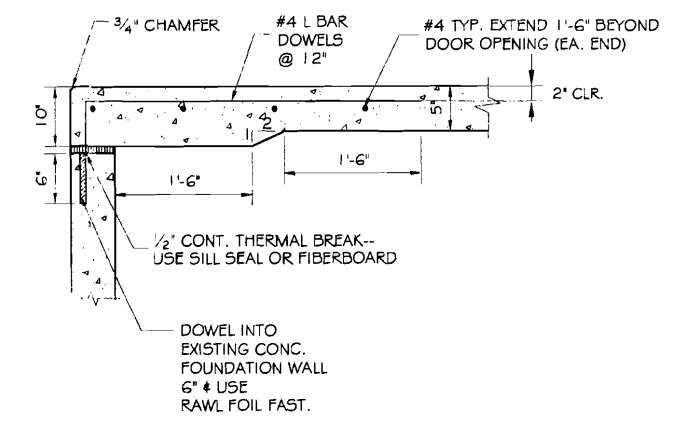
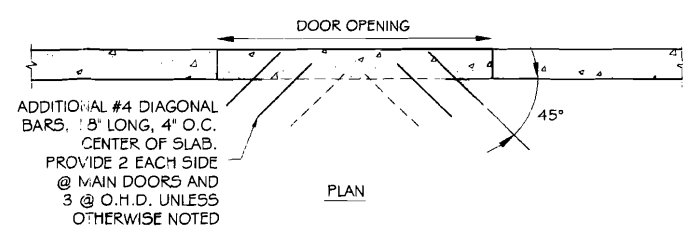
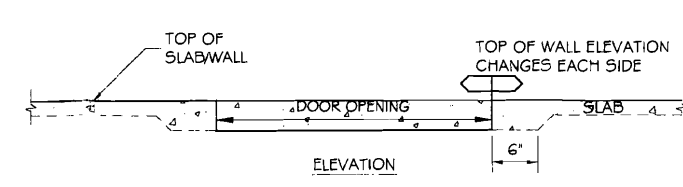


(A) PIER FOOTING SECTION
SCALE: 3/4" = 1'-0"

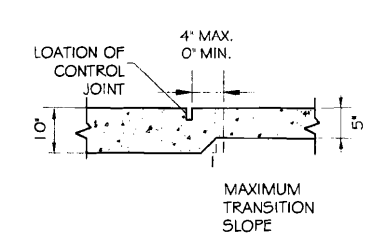


SECTION @ SLAB
SCALE: 3/4" = 1'

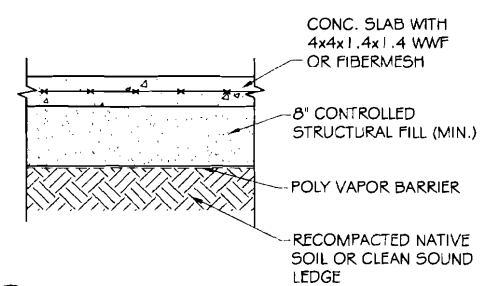
FOOTING SCHEDULE					
SYM.	CORNERS	W	D	L	REINFORCING
(A)	1A, 1B, 4A, 4B	1'-6"	10"	3'-0"	SEE SECTION
(B)	2A, 2B, 3A, 3B	1'-6"	10"	4'-0"	SEE SECTION



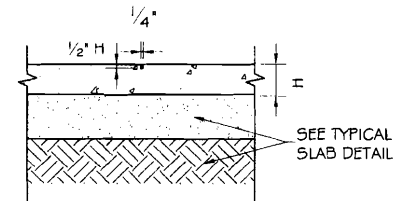
(C) TYPICAL SLAB DETAIL @ DOOR OPENINGS
SCALE: 1" = 1'-0"



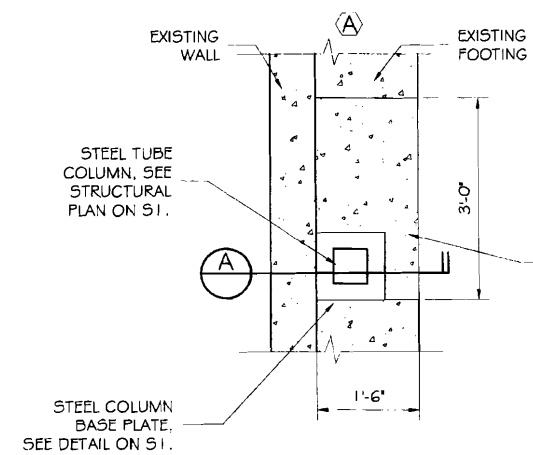
(E) SLAB THICKNESS TRANSITION
SCALE: 1" = 1'-0"



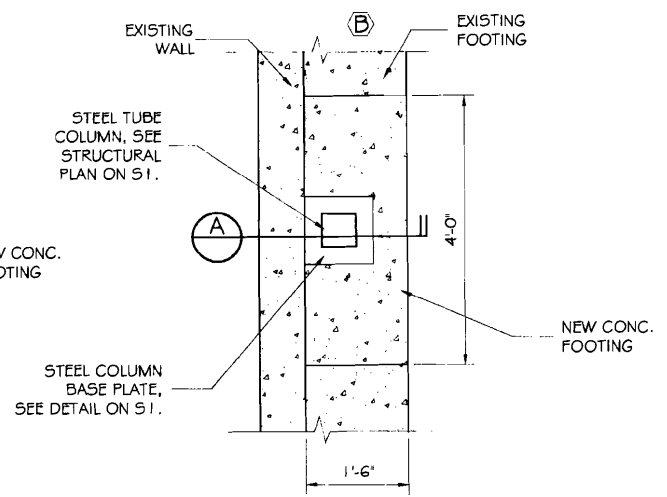
(F) TYPICAL SLAB DETAIL
SCALE: 1" = 1'-0"



(G) TYPICAL SLAB CONTROL JOINT DETAIL
SCALE: 1" = 1'-0"

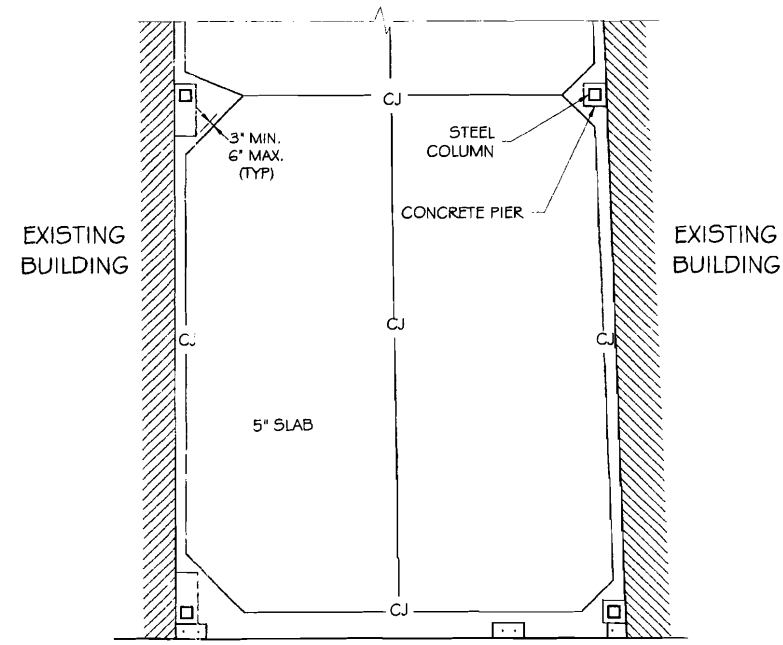


PLAN VIEW @ CORNER PIERS
SCALE: 3/4" = 1'-0"

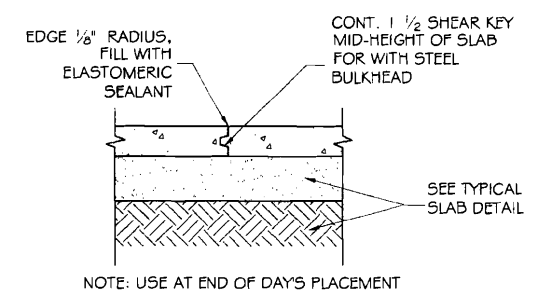


PLAN VIEW @ CENTER PIERS
SCALE: 3/4" = 1'-0"

(B) PIER & FOOTING PLAN VIEWS
SCALE: 3/4" = 1'-0"



(D) TYPICAL CONTROL JOINT PLAN
SCALE: 1/4" = 1'-0"



(H) TYPICAL SLAB CONSTRUCTION JOINT DETAIL
SCALE: 1" = 1'-0"

BUILDING INSPECTION
 7/2001

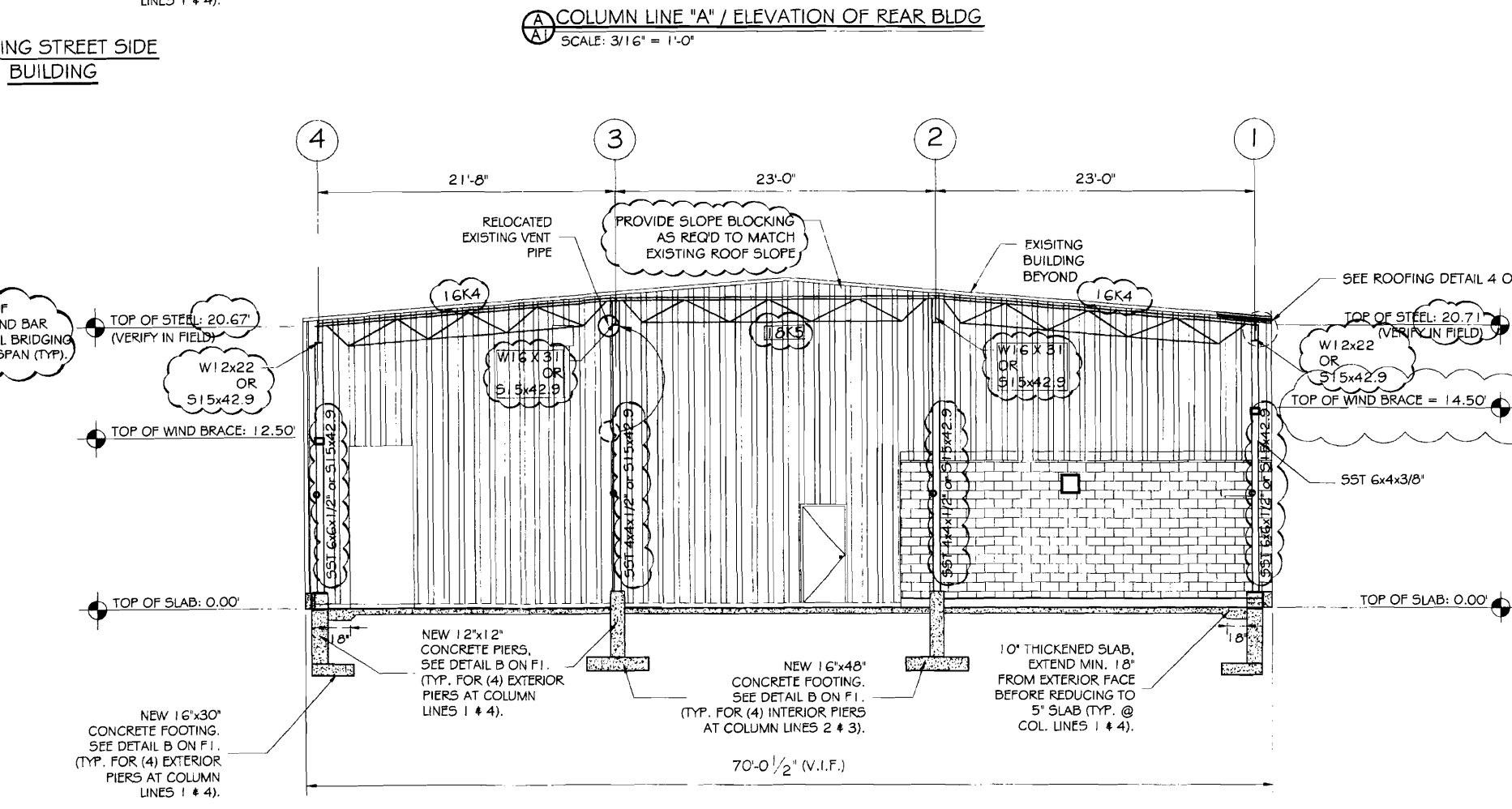
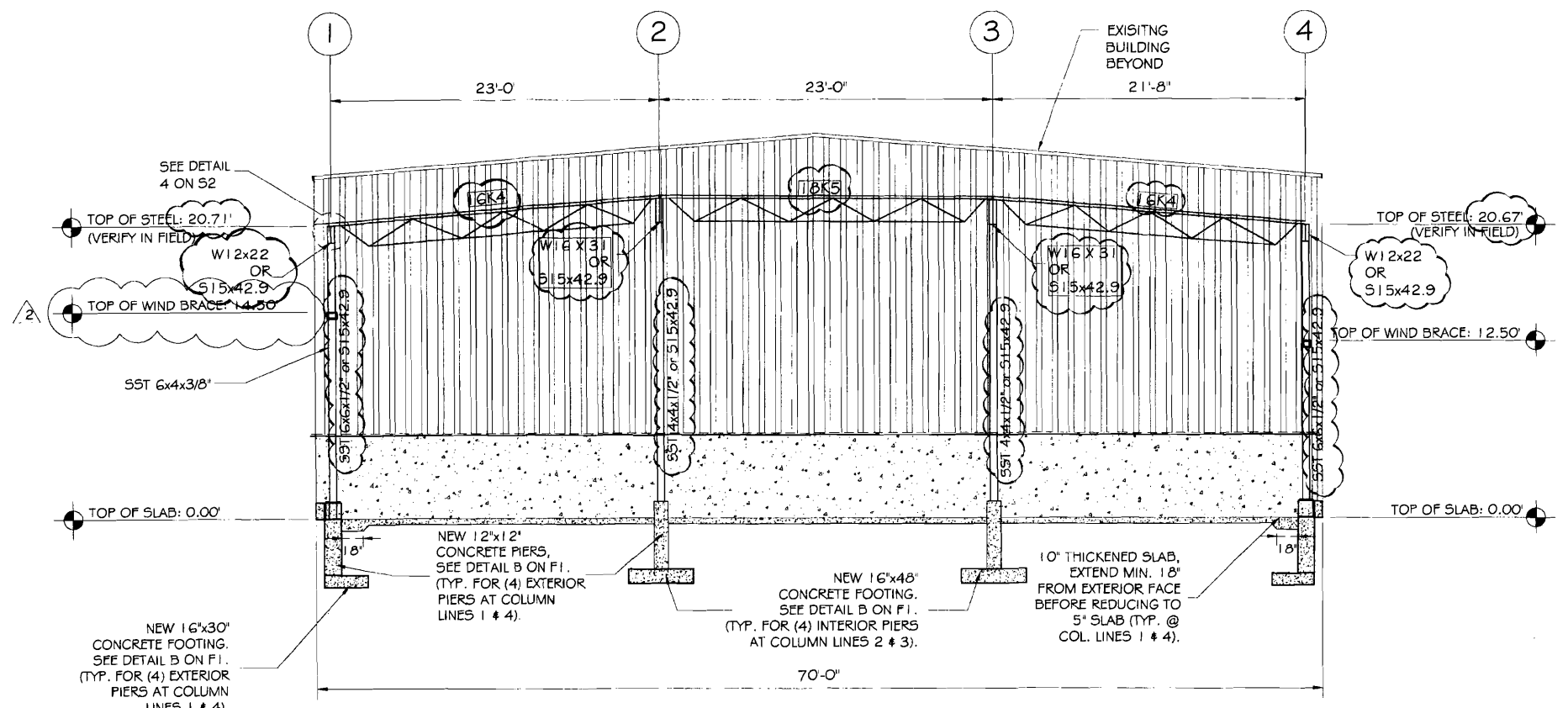
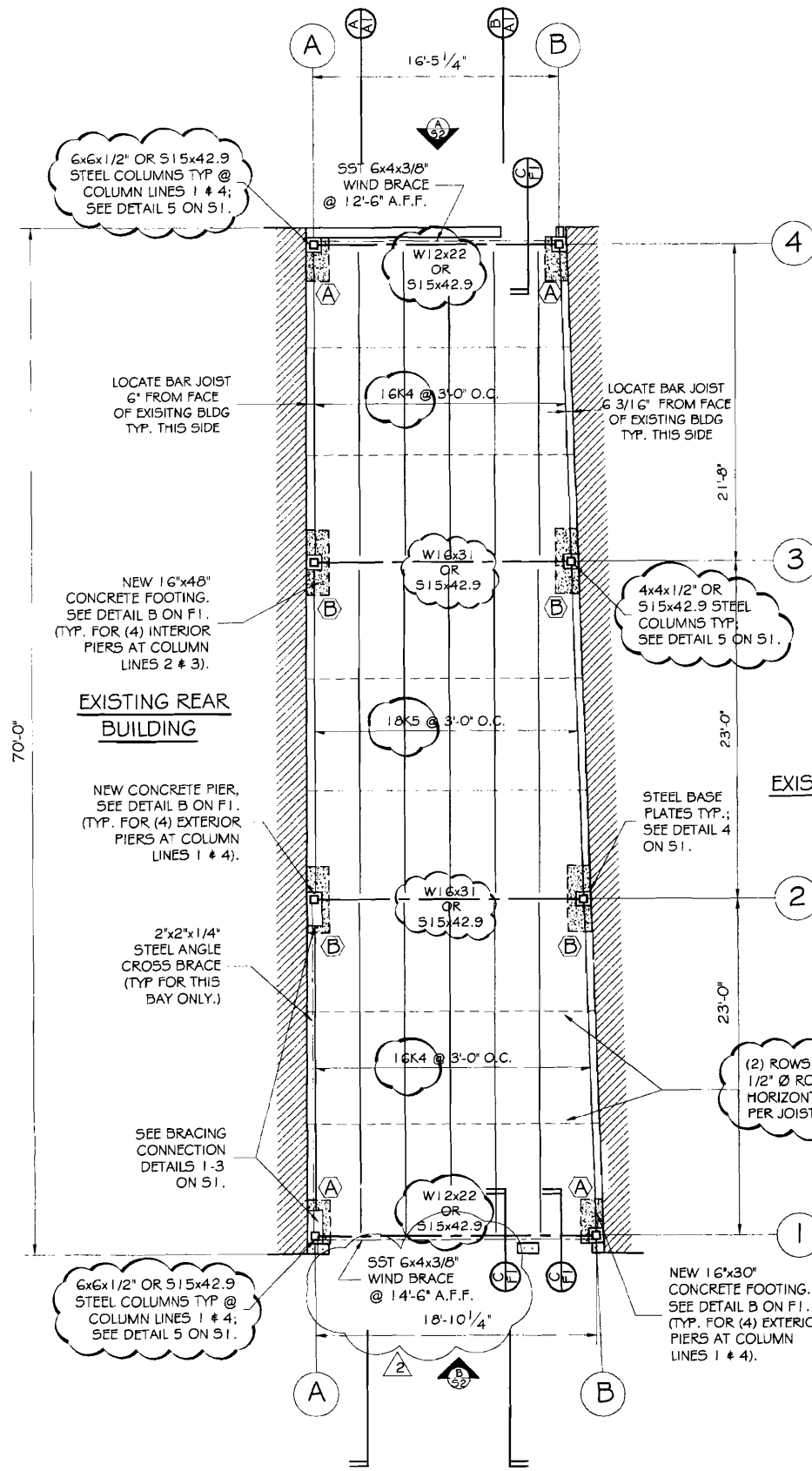
ASSOCIATED DESIGN PARTNERS INC.
 88 English Road
 Palmetto, VA 23026
 Office: (804) 578-1751
 Fax: (804) 578-1751
 E-Mail: adp@adpartners.com

THIS DRAWING, DESIGN AND ELECTRONIC FILES ARE THE PROPERTY OF ASSOCIATED DESIGN PARTNERS, INC. THE REPRODUCTION, COPYING OR ANY OTHER USE OF THIS DOCUMENT WITHOUT WRITTEN CONSENT IS PROHIBITED.

PROJECT: DRAKE INFILL/EXTENSION
 FOR DRUDGE FOUNDATION, PORTLAND, ME
SHEET TITLE: PIER AND SLAB DETAILS

REVISIONS	DATE
No.	
DESCRIPTION	

DATE: 6/17/02
 SCALE: AS NOTED
 DESIGN BY: JAT
 DRAWN BY: MGK
 FILE No: 02072.s1.DWG
 PROJECT NUMBER:
02072
 SHEET: OF
F1 1



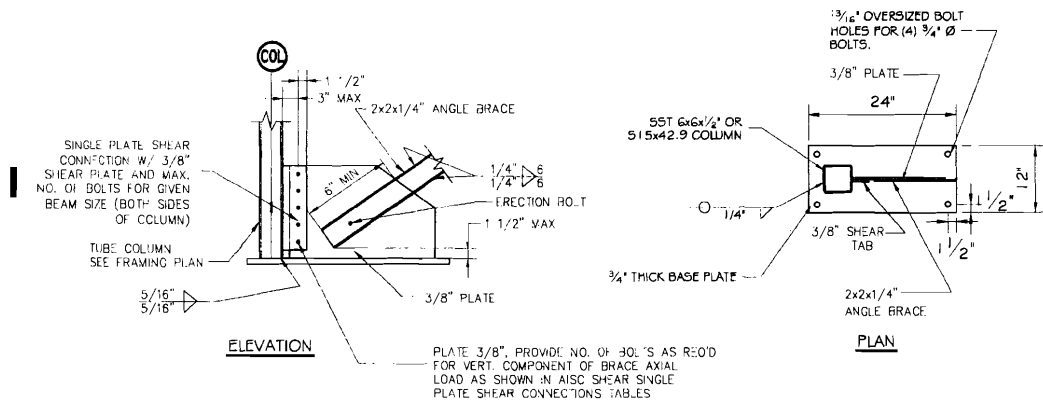
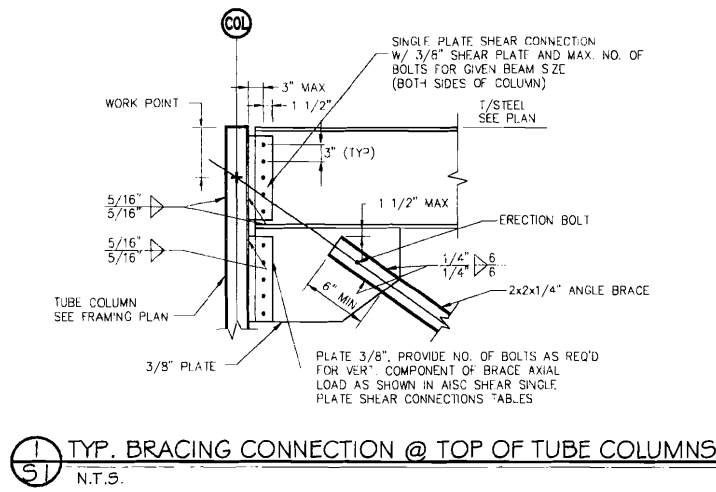
ASSOCIATED DESIGN PARTNERS INC.
 80 Leigland Road
 Fairbairn, Maine 04105
 Office: (207) 878-1751
 Fax: (207) 878-1788
 E-Mail: adp@adpinc.com

THIS DRAWING, DESIGN AND SPECIFICATIONS ARE THE PROPERTY OF ASSOCIATED DESIGN PARTNERS, INC. NO REPRODUCTION, COPIING OR ANY OTHER USE OF THIS DOCUMENT WITHOUT WRITTEN CONSENT IS PROHIBITED.

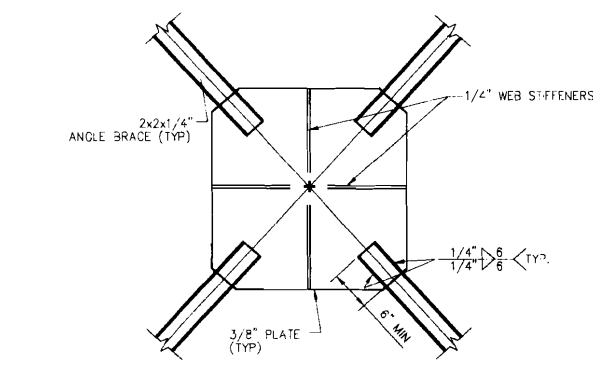
DRAKE INFILL/EXTENSION
 PROJECT: FOR: BIM DRAKE PRESUMASCOT ST., PORTLAND, ME
 SHEET TITLE: PLAN AND EXISTING ELEVATIONS

NO.	REVISIONS	DATE
1	REVISE ROOF & STRUCTURE PER OWNER	05/14/03
2	REVISE OPENINGS/WIND BRACE PER OWNER	05/22/03

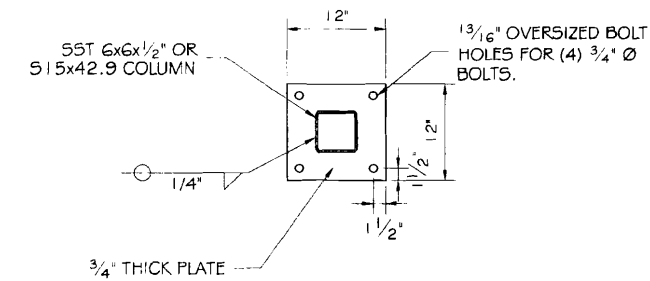
DATE: 6/18/02
 SCALE: AS NOTED
 DESIGN BY: JAT
 DRAWN BY: MGK
 FILE No: 02072.a1.DWG
 PROJECT NUMBER: 02072
 SHEET: OF 1
A1 1



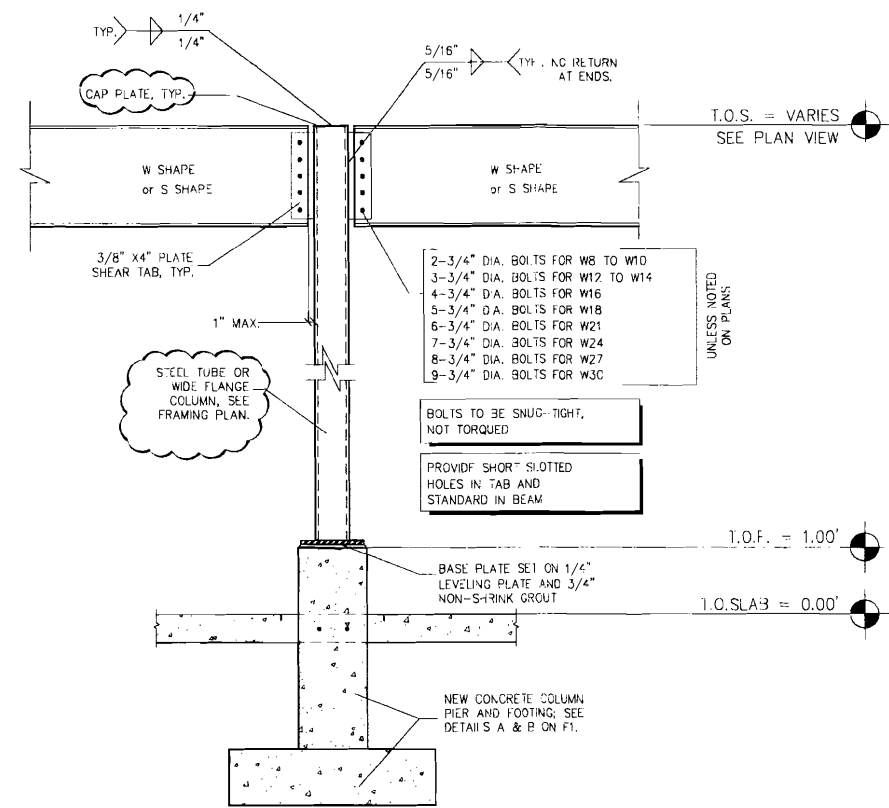
2 BRACING CONNECTION @ BOTTOM OF COLUMN
N.T.S.



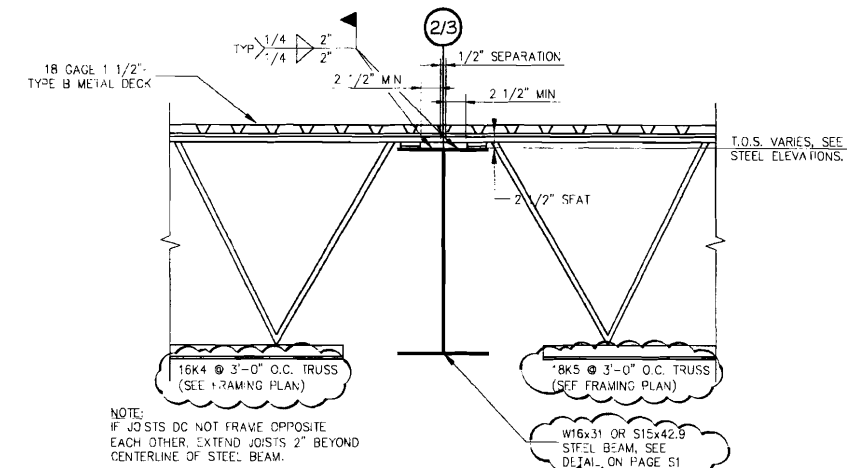
3 BRACING CONNECTION @ COLUMN MIDPOINT
N.T.S.



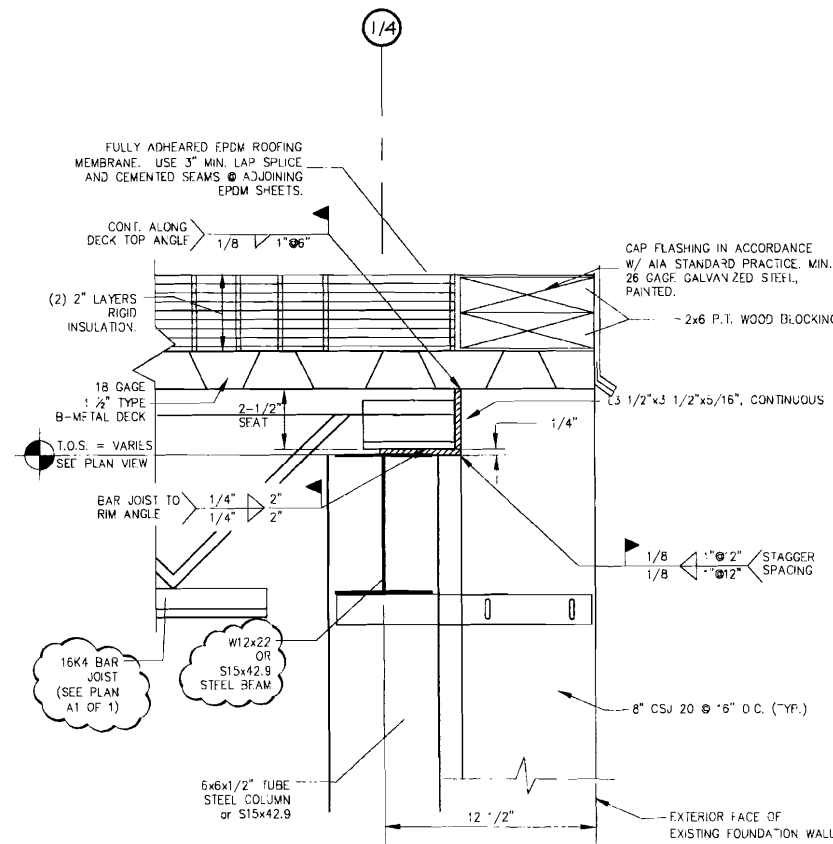
4 TYP. BASE PLATE DETAIL
N.T.S.



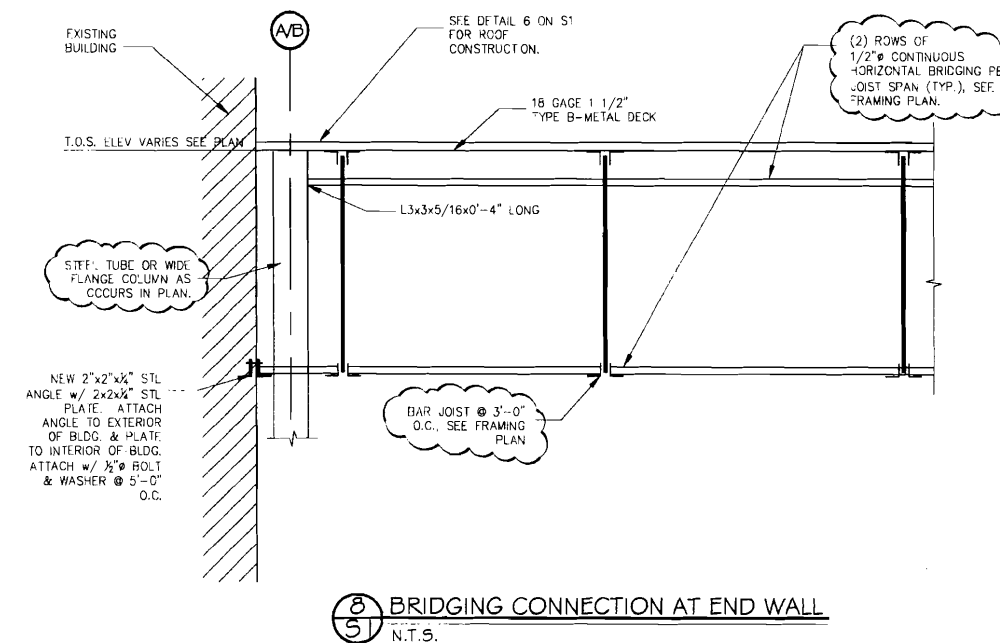
5 TYPICAL COLUMN DETAIL
N.T.S.



7 JOIST @ STEEL BEAM (TYP)
N.T.S.



6 TRUSS BRACING AT EXTERIOR WALL
N.T.S.



8 BRIDGING CONNECTION AT END WALL
N.T.S.

ASSOCIATED DESIGN PARTNERS INC.
Office: (207) 778-1751
Fax: (207) 778-1751
E-Mail: info@adpartners.com
80 Leighton Road
Portland, Maine 04105

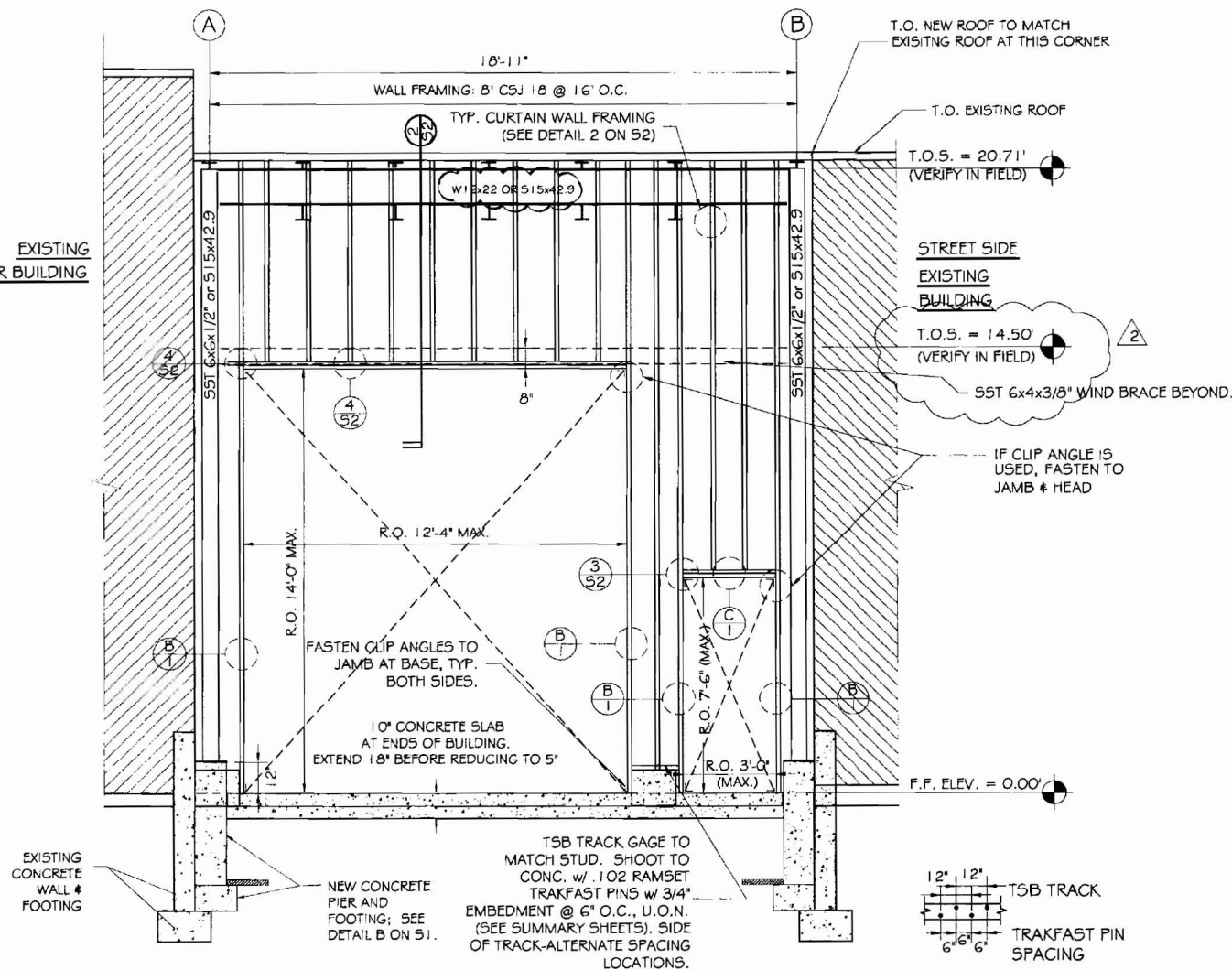
THIS DRAWING, DESIGN AND ELECTRONIC FILE ARE THE PROPERTY OF ASSOCIATED DESIGN PARTNERS, INC. THE REPRODUCING, COPYING OR ANY OTHER USE OF THIS DOCUMENT WITHOUT WRITTEN CONSENT IS PROHIBITED.

PROJECT: **DRAKE INFILL/EXTENSION**
FOR: JIM DRAKE
PRESIDENT/SCOTT ST., PORTLAND, ME
SHEET TITLE: **LIGHT GAGE AND STEEL DETAILS**

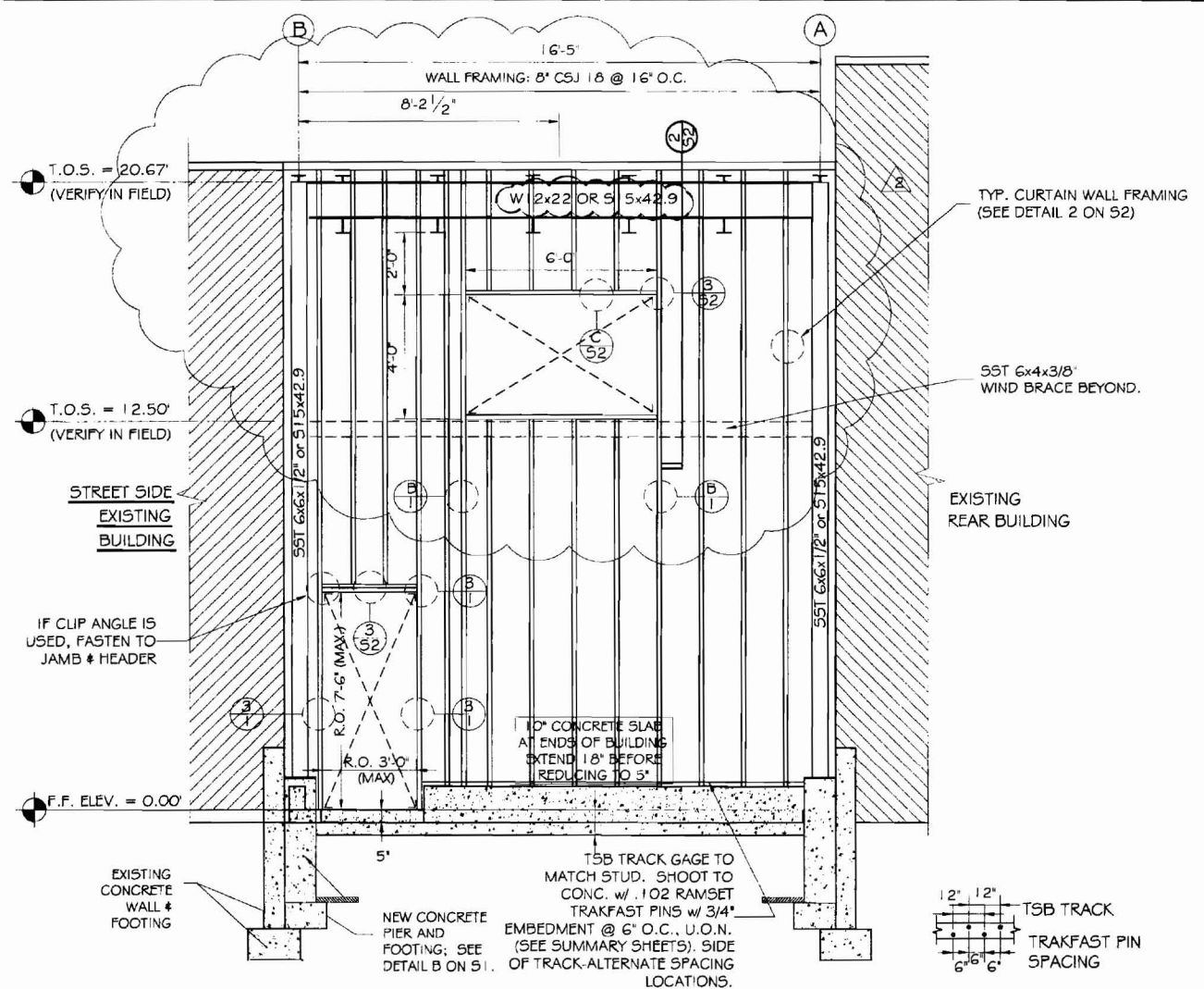
REVISIONS	DATE	DESCRIPTION
1	05/14/02	REVISE ROOF & STRUCTURE PER OWNER

DATE: 6/17/02
SCALE: AS NOTED
DESIGN BY: JAT
DRAWN BY: MGK
FILE No: 02072.dwg
PROJECT NUMBER: **02072**
SHEET: **S1** OF **2**

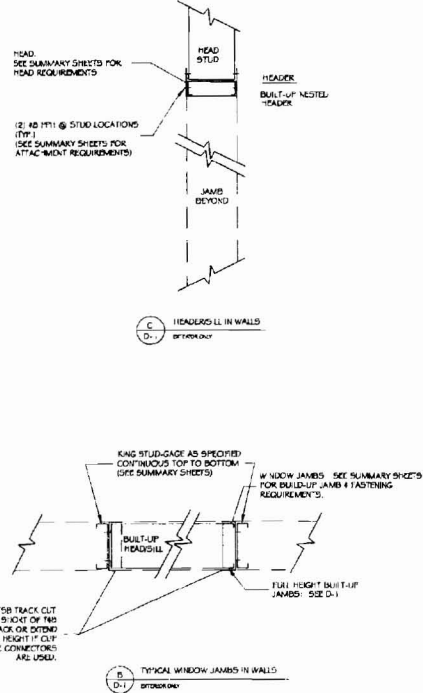
EXISTING REAR BUILDING



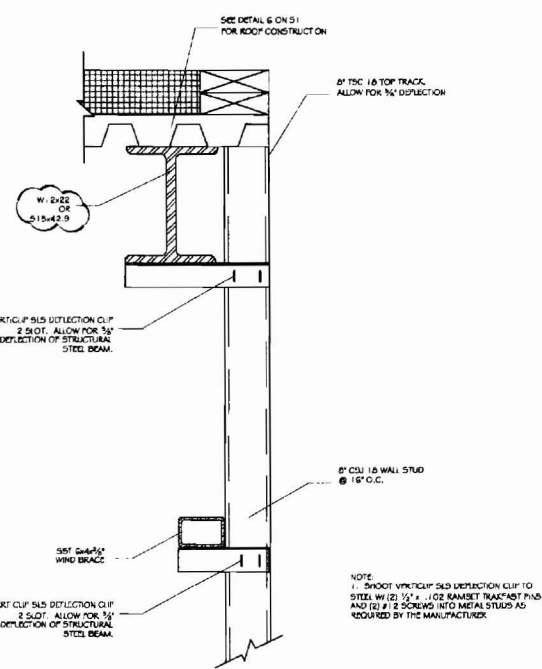
A FRONT ELEVATION "A"
SCALE: 3/8" = 1'-0"



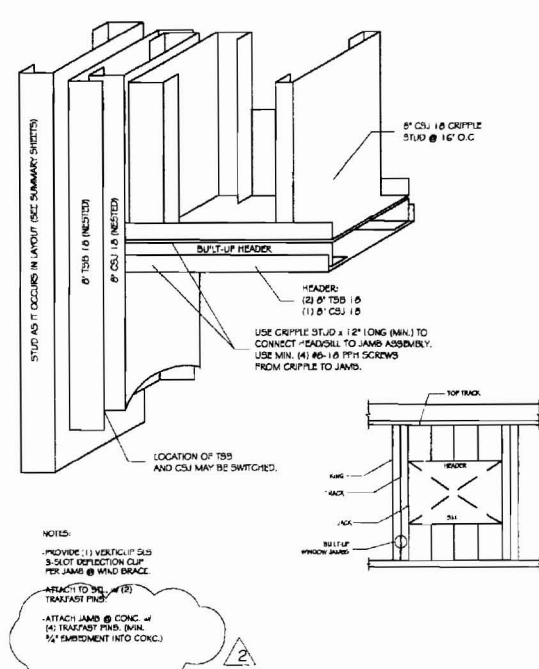
B REAR ELEVATION "B"
SCALE: 3/8" = 1'-0"



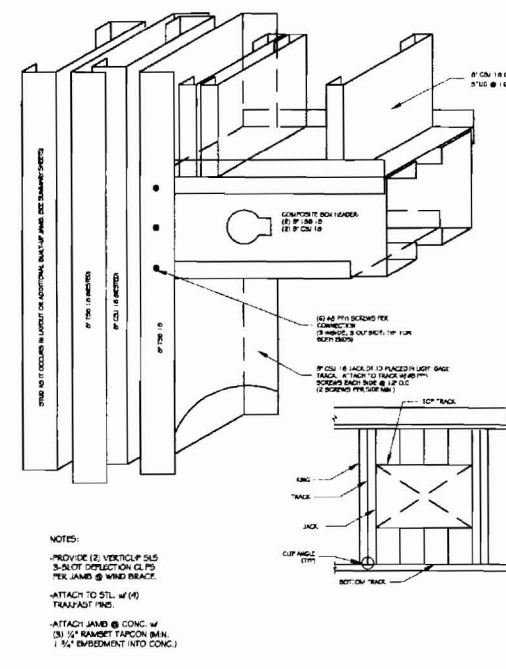
1 HEADER, SILL, & JAMB DETAIL FOR NON-LOAD BEARING WALLS
N.T.S.



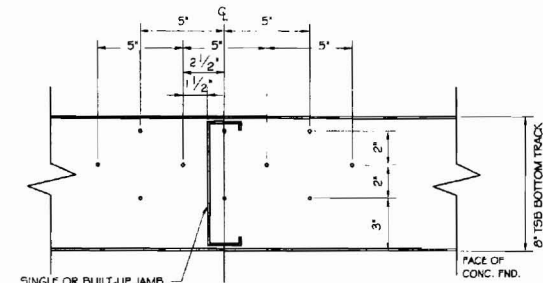
2 TYP. CURTAIN WALL FRAMING
N.T.S.



3 TYP. HEADER DETAILS @ NON-LOAD BEARING WALLS
N.T.S.



4 BOX HEADER DETAIL @ LOAD BEARING WALLS
N.T.S.



5 TRAKFAST PIN FASTENING DIAGRAM
N.T.S.

ASSOCIATED DESIGN PARTNERS INC.
Office: (877) 979-1751
E-Mail: info@adpartners.com
88 Lingham Road
Plainfield, NJ 07055

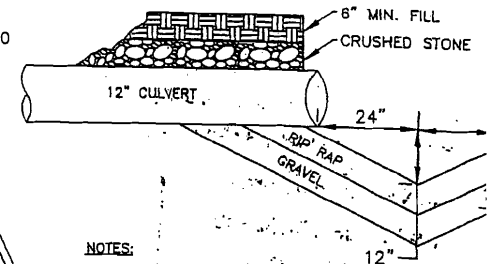
THIS DRAWING, DESIGN AND ELECTRONIC FILE ARE THE PROPERTY OF ASSOCIATED DESIGN PARTNERS, INC. THE REPRODUCTION, COPYING OR ANY OTHER USE OF THIS DOCUMENT WITHOUT WRITTEN CONSENT IS PROHIBITED.

DRAKE INFILL/EXTENSION
FOR JIM DRAKE PRESUMPTUOUS ST., PORTLAND, ME.
LIGHT GAGE ELEVATIONS AND DETAILS
PROJECT:
SHEET TITLE:

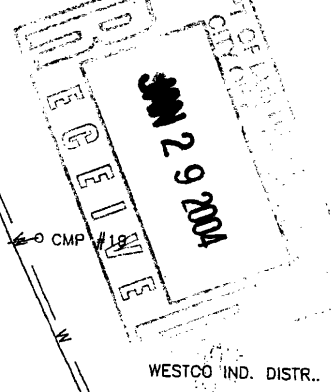
NO.	REVISIONS	DATE
1	REVISE ROOF & STRUCTURE PER OWNER	10/31/2002
2	REVISE OPENINGS/WIND BRACE PER OWNER	02/28/2003

DATE: 6/18/02
SCALE: AS NOTED
DESIGN BY: JAT
DRAWN BY: MGK
FILE No. 02072.a1.DWG
PROJECT NUMBER: 02072
SHEET: OF
S2 2

PLUNGE POOL DETAIL
NTS



- NOTES:
1. PLUNGE POOL TO BE CONSTRUCTED AS FOLLOWS:
A 2:1 SLOPE OF STONE LAYER WITH 6-12" GRAVEL
12" IN DEPTH, 24" IN WIDTH AND 48" IN U



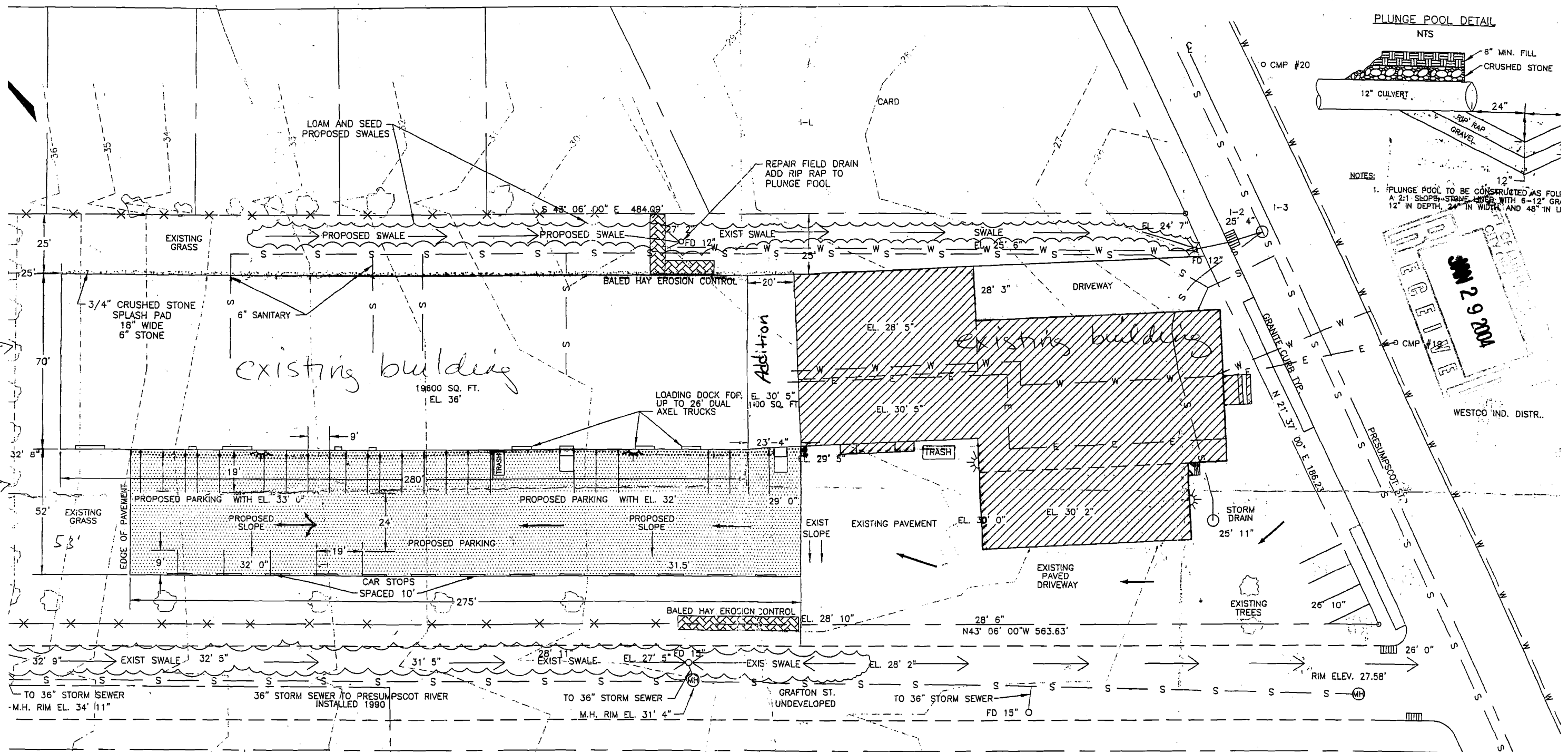
WESTCO IND. DISTR.

fence on P.L. →

PL. →

PL. →

fence on P.L. →



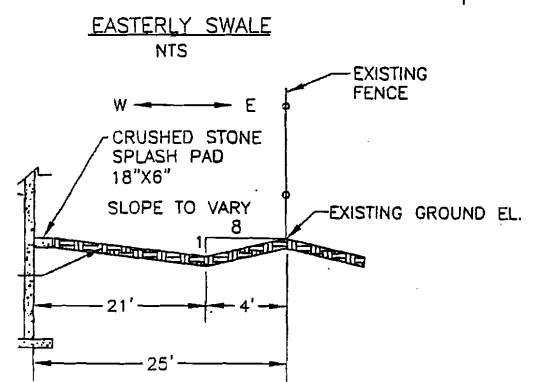
- NOTES:
- PROPERTY LINES FROM SITE PLAN A 1/23/76 FOR ARROW REALTY BASED ON A SURVEY BY JACK BERMAN, CONSULTING ENGINEER, 4/8/76
 - PROPERTY LINES
 - SEWER LINE
 - WATER MAIN
 - ROAD CENTER LINE
 - IRON PIN
 - DENOTES ZONING SEPARATION
 - ELECTRICAL LINES

- EXISTING FENCE
- UNDEVELOPED ROAD
- DRAINAGE FLOW
- DRIVE WAY
- EXISTING BUILDING
- BALED HAY
- PROPOSED PAKING
- PROPOSED PARKING AREA TO BE 12" GRAVEL BED WITH A 3" ASPHALT TOP

CITY OF PORTLAND
APPROVED SITE PLAN
SUBJECT TO DEPARTMENTAL CONDITIONS
DATE OF APPROVAL 5/12/08

ZONE 1-L
ZONE R-5

F.P. DRAKE
DRAKE EQUIPMENT CO.
160 PRESUMPCOT ST.
PORTLAND, MAINE
BUILDING ADDITION PROJECT
SITE PLAN



HAMILTON M.C.

HAMILTON I.W. & TURNER D.

DORAZIO, DAN

PIKE

CMP #18

MAACO AUTO