
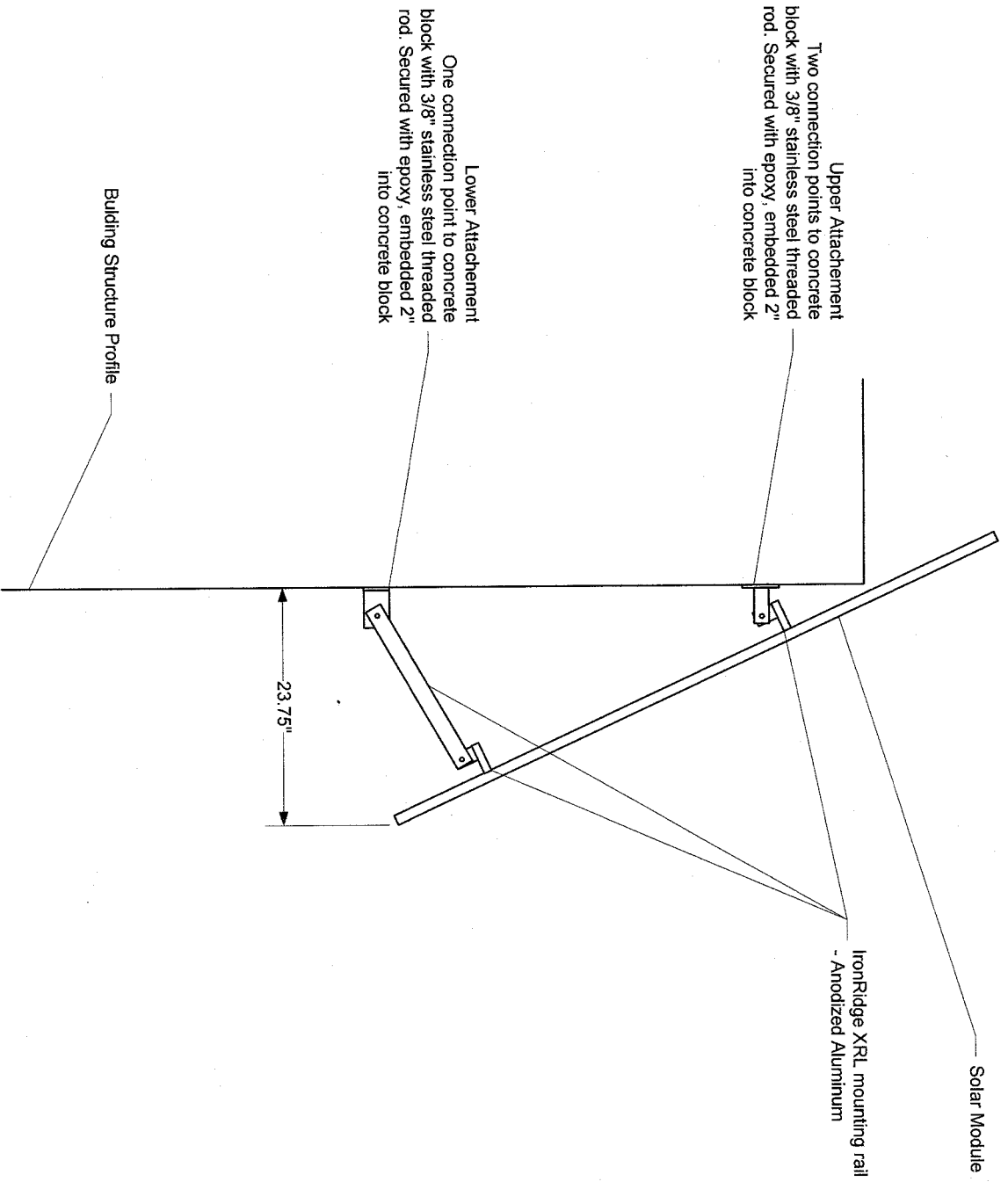



Note: Array mounting brackets shall be installed every 4' to 6' along the array, and shall terminate within 2' of the end of the array.

		142 Presumpscot Street Portland, Maine, 04097 207-221-6342	
ReVision Energy			
Solar Panel Awning Mount Detail			
System Perpendicular to Presumpscot St.			
DATE	DRAWN BY	PAGE	DWG#
4/26/2012	Geoff Sparrow	1 of 1	1
			Rev. 1



Note: Array mounting brackets shall be installed every 4' to 6' along the array, and shall terminate within 2' of the end of the array.

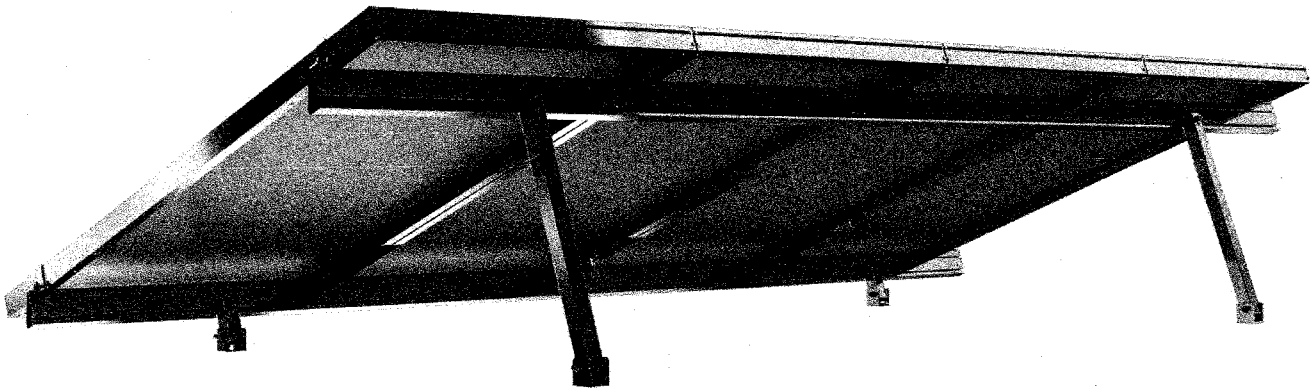
		142 Presumpscot Street Portland, Maine, 04097 207-221-6342	
		Revision Energy	
Solar Panel Awning Mount Detail System Parallel With Presumpscot St.			
DATE	DRAWN BY	PAGE	DWG#
4/26/2012	Geoff Sparrow	1 of 1	1
			Rev. 1



Installation Manual

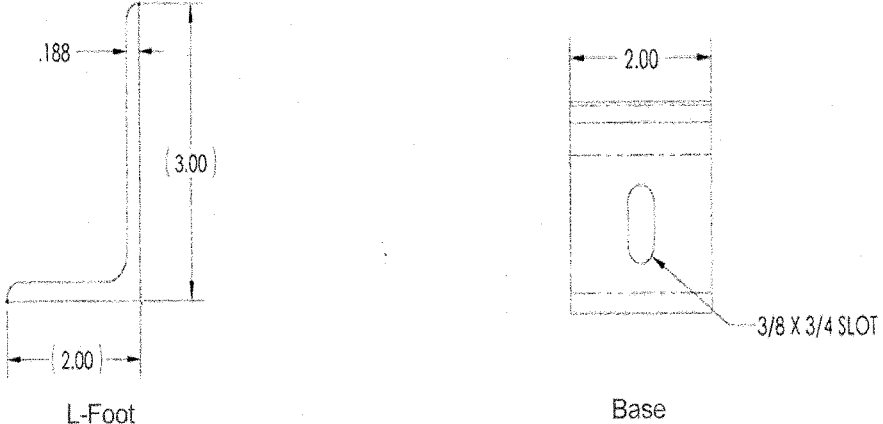
~~Tilt Leg~~

Example of array configuration.



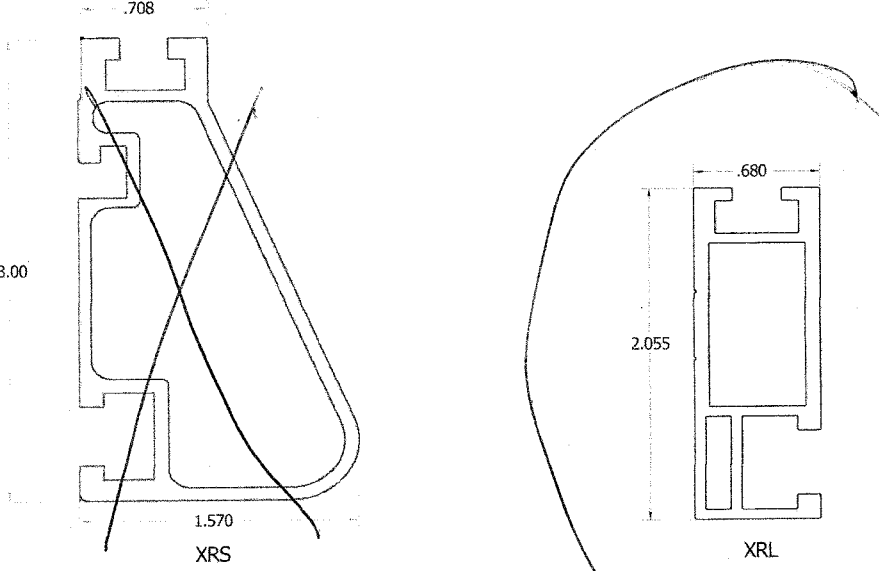
Solar Mounting Solutions

L-feet

Part Numbers	Diagram
29-7000-017	 <p data-bbox="565 758 634 783">L-Foot</p> <p data-bbox="1105 758 1166 783">Base</p>

Notes: IronRidge L-feet are adjustable in height using the vertical slot in the diagram above.

Rails

Part Numbers	Diagram
XRS 51-7000-XXX XRL 51-6000-XXX	 <p data-bbox="740 1650 781 1675">XRS</p> <p data-bbox="1284 1650 1325 1675">XRL</p>