

- GENERAL NOTES:
- LOCATION OF PROPOSED CONNECTIONS APPROXIMATE. CONTRACTOR TO CONTACT ENGINEER IF FIELD INFORMATION VARIES FROM INFORMATION ON PLANS.
 - CONTRACTOR IS TO BE CAUTIONED THAT CERTAIN LOCATIONS AND/OR ELEVATIONS OF EXISTING UTILITIES HAVE BEEN PROVIDED THROUGH UTILITY COORDINATION OR OTHER OBSERVATIONS. INFORMATION IS NOT TO BE RELIED UPON AS EXACT OR COMPLETE. CONTRACTOR TO FIELD VERIFY AND COORDINATE WITH UTILITY COMPANY AND DIG SAFE NO LESS THAN 72 HOURS PRIOR TO ANY EXCAVATION TO REQUEST EXACT FIELD LOCATION OF ALL UTILITIES. IT SHALL BE THE RESPONSIBILITY OF THE CONTRACTOR TO RELOCATE ALL EXISTING UTILITIES WHICH CONFLICT WITH THE PROPOSED IMPROVEMENTS INDICATED IN THE CONTRACT DOCUMENTS. CONTRACTOR TO NOTIFY ENGINEER OF ANY DIFFERENTIATIONS FROM EXISTING CONDITIONS, INCLUDING UTILITY SURVEY, PRIOR TO ANY CHANGES.
 - FOR ALL UTILITIES, ACORN ENGINEERING DESIGN LIMITS EXTEND TO OUTSIDE WALL OF BUILDING. METERING OF UTILITIES TO BE COMPLETED BY M.E.P. UNLESS SPECIFIED OTHERWISE.
 - CONTRACTOR TO COORDINATE WITH ARCHITECT AND M.E.P. ON FINAL UTILITY CONNECTIONS LOCATION TO THE UTILITY ROOM.
 - SEWER UTILITIES: CONTRACTOR TO COORDINATE WITH OWNER FOR FINAL SERVICE CONNECTION. SEWER UTILITIES TO BE CONSTRUCTED IN ACCORDANCE WITH CITY OF PORTLAND TECHNICAL STANDARDS. VALVE FOR BACKFLOW PREVENTION SHALL BE INSTALLED WITHIN THE PROPERTY LINES FOR EACH CITY SEWER CONNECTION. CONTACT ENGINEER IF FIELD CONDITIONS FROM INVERT VARY FROM DESIGN.
 - WATER UTILITIES: FINAL PIPE SIZING PROVIDED BY M.E.P. ENGINEER AND FIRE PROTECTION DESIGNER. INTERNAL METERING, BACKFLOW PREVENTION, AND PRESSURE REDUCERS TO BE COMPLETED BY M.E.P. ENGINEER. DOMESTIC WATER PIPE SIZES WILL DETERMINE THE FINAL WATER METERING OPTIONS. METER MAY BE SMALLER THAN PROPOSED WATER MAIN. WATER METERING, PRESSURE REDUCER AND BACKFLOW PREVENTION TO BE IN ACCORDANCE WITH THE PORTLAND WATER DISTRICT STANDARDS. FIRE SPRINKLER SHALL ENTER THE BUILDING WHERE THE BACKFLOW PREVENTION DEVICE AND FIRE SPRINKLER RISER ARE LOCATED. CONTRACTOR TO FOLLOW METERING GUIDELINES OF THE PORTLAND WATER DISTRICT AND CITY OF PORTLAND. FIRE HYDRANT SHALL BE CONSTRUCTED IN ACCORDANCE WITH ALL APPLICABLE CITY, PWD, AND NFPA REGULATIONS. WATER LINES TO MAINTAIN MIN. 10' FROM CENTER OF TREES.
 - ELECTRIC UTILITIES: ELECTRIC DESIGN TO BE FINALIZED BY M.E.P. ENGINEER. ELECTRICAL LOAD TO BE DETERMINED BY M.E.P. ENGINEER. METER LOCATION AND POLE-MOUNTED TRANSFORMER SIZE DEFINED BY M.E.P. ALL ELECTRIC CONSTRUCTION SHALL CONFORM TO CMP GUIDEBOOK OF STANDARD REQUIREMENTS, MOST RECENT EDITION. DESIGN SUBJECT TO FINAL APPROVAL FROM CMP.
 - CONTRACTOR TO COORDINATE WITH OWNER ON SECONDARY ELECTRICAL CONDUITS AND THEIR LOCATIONS.
 - CABLE AND TELEPHONE PULLBOXES AND PEDESTAL LOCATIONS TO BE DETERMINED BY SPECTRUM AND FAIRPOINT PRIOR TO CONSTRUCTION. CONTRACTOR TO COORDINATE.

MINIMUM HORIZONTAL UTILITY SEPARATIONS					
UTILITY	UGE/T/C	WATER	SEWER	GAS	STORMWATER
UGE/T/C	-	6'	5'	4'	6'
WATER	6'	-	5'	6'	3'
SEWER	5'	5'	-	5'	5'
GAS	4'	6'	5'	-	6'
STORMWATER	6'	3'	5'	6'	-

*PERMISSIBLE ONLY IF SEWER IS LAID MIN. 18" BELOW WATER SERVICE; OTHERWISE, 10" OF HORIZONTAL SEPARATION MUST BE MAINTAINED.

N/F
Joseph W. Bourque
Book 4299 Page 330
Book 4529 Page 209
Map 426-A, Lots 8

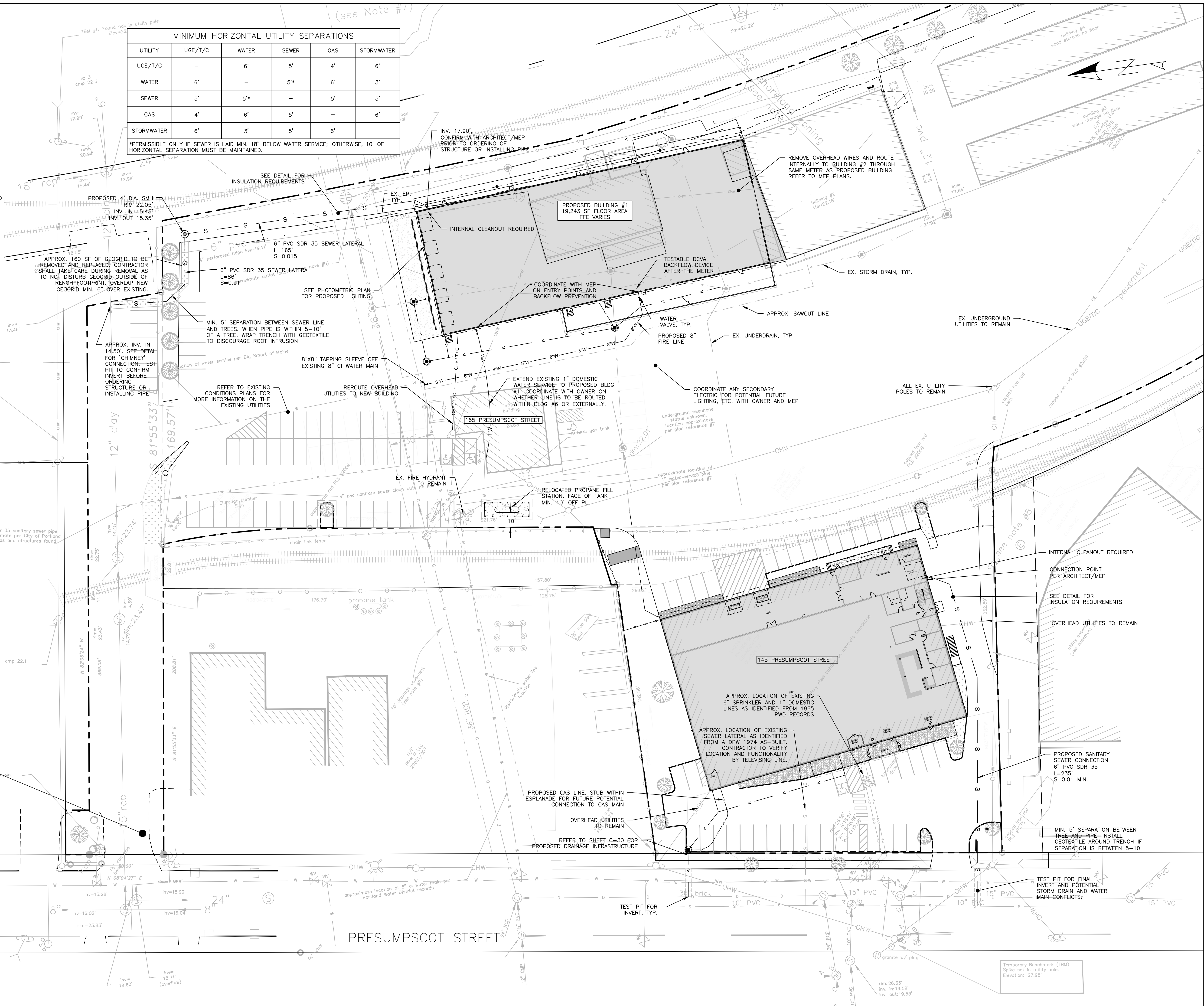
N/F
Cumberland &
York Distributors
Book 3041 Page 808
Book 3138 Page 106
Book 4529 Page 207
Map 426-A, Lots 6,

N/F
BAS Eldredge LLC
Book 29365 Page 256

Formerly
St. Lawrence & Atlantic Railroad Company
Book 8760 Page 63
Tax Map 426 Lot C.N.R.R. R/W
(see easement note #2)

SCALE: 1" = 30'

ISSUED FOR
CONSTRUCTION



ISSUED FOR	BY	DATE
FINAL APP.	WHS	2/22/18
COMMENT RESPONSE	WHS	8/23/18
CONSTRUCTION	WHS	11/13/18
SEWER/WATER	WHS	12/1/18

UTILITY PLAN
ELDRIDGE LUMBER YARD EXPANSION
BAS ELDRIDGE LLC
PO BOX 69 CAPE NEDDICK, MAINE 03902

ACORN ENGINEERING, INC.
158 BANKFOOT ST. PORTLAND, MAINE 04102
(207) 775-2655

FILE: 1038_CIVIL
JN: 1038
SCALE: 1"=30'
DESIGNED BY: SJL
DRAWN BY: SJL
CHECKED BY: WHS

DRAWING NO.
C-20