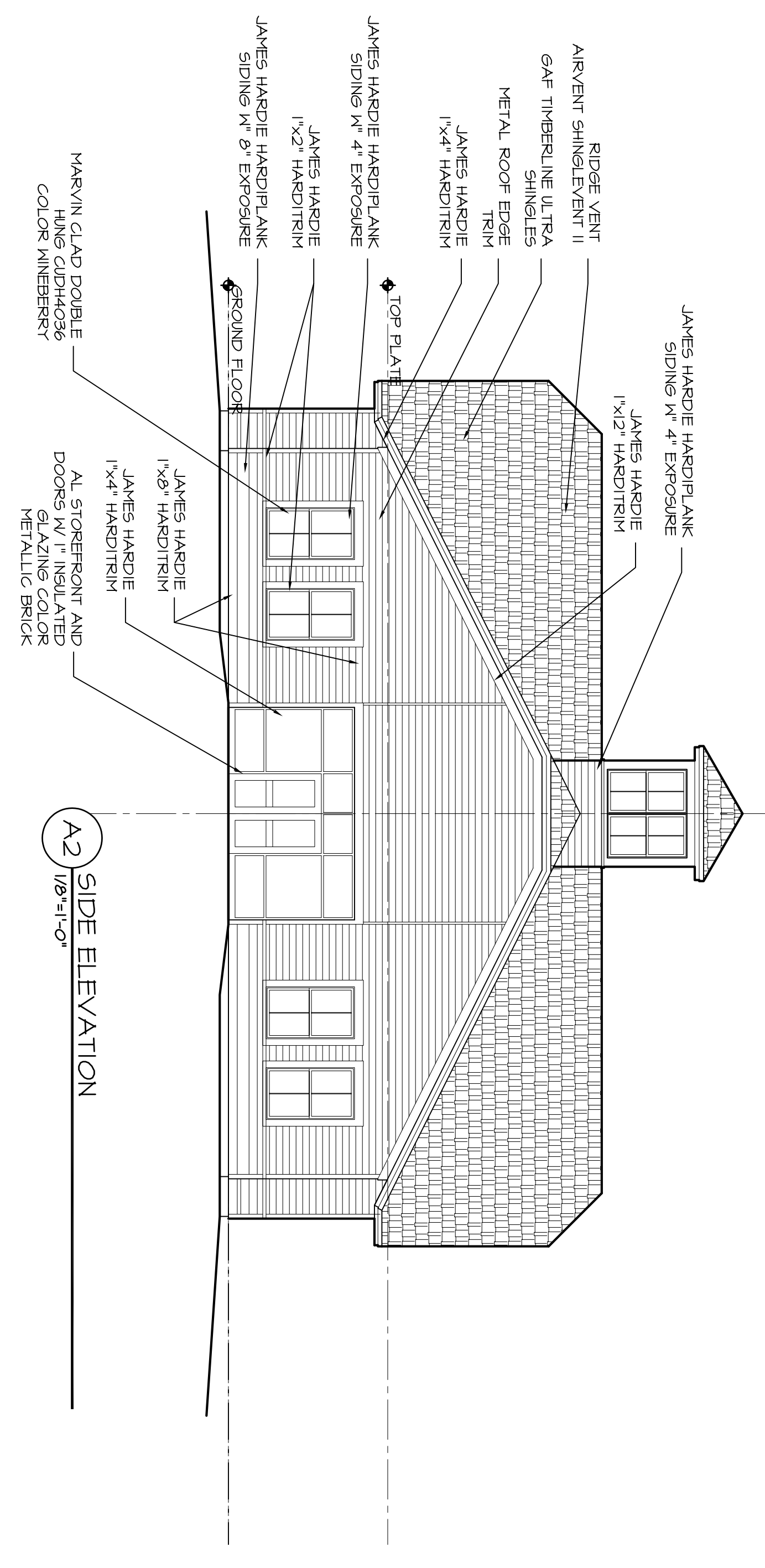
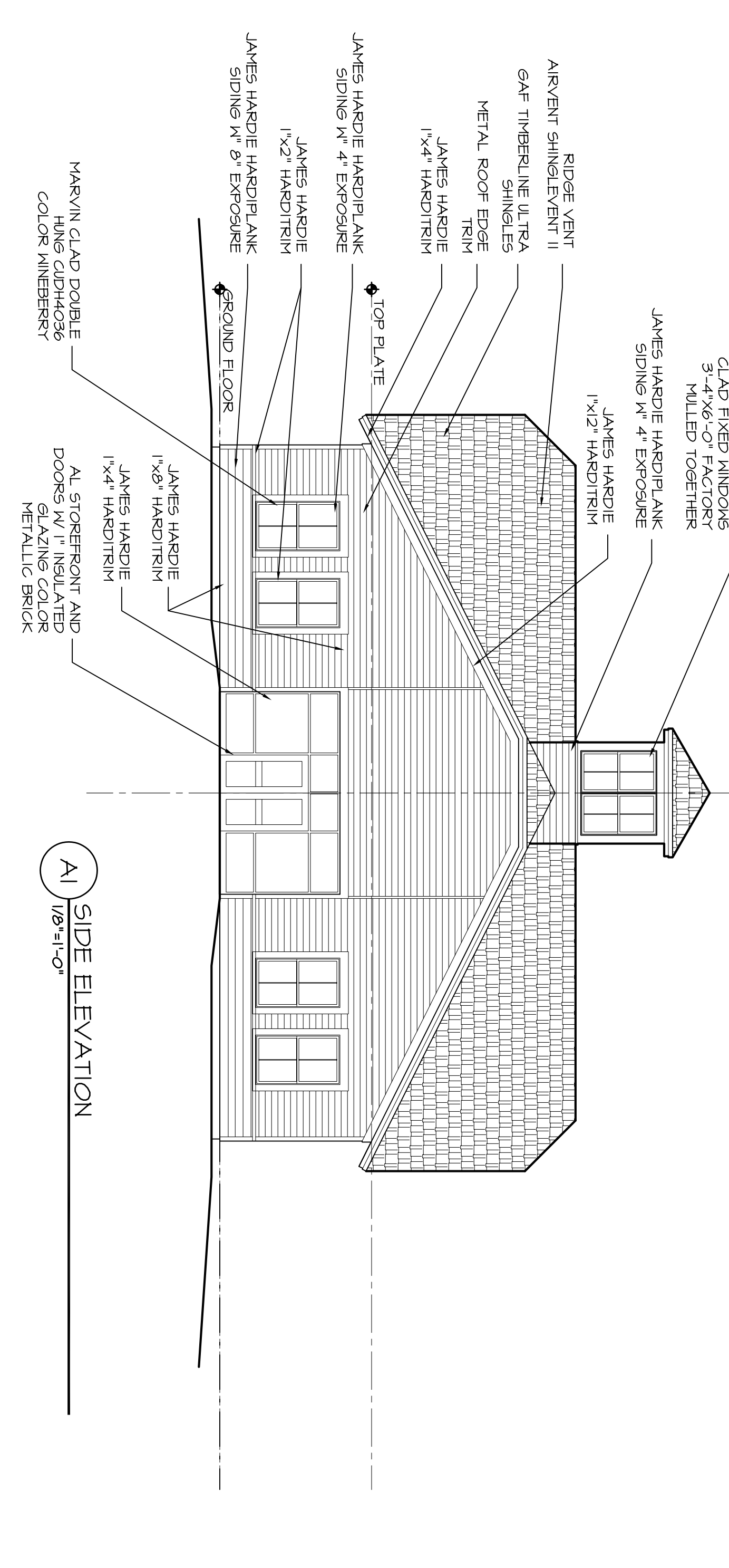


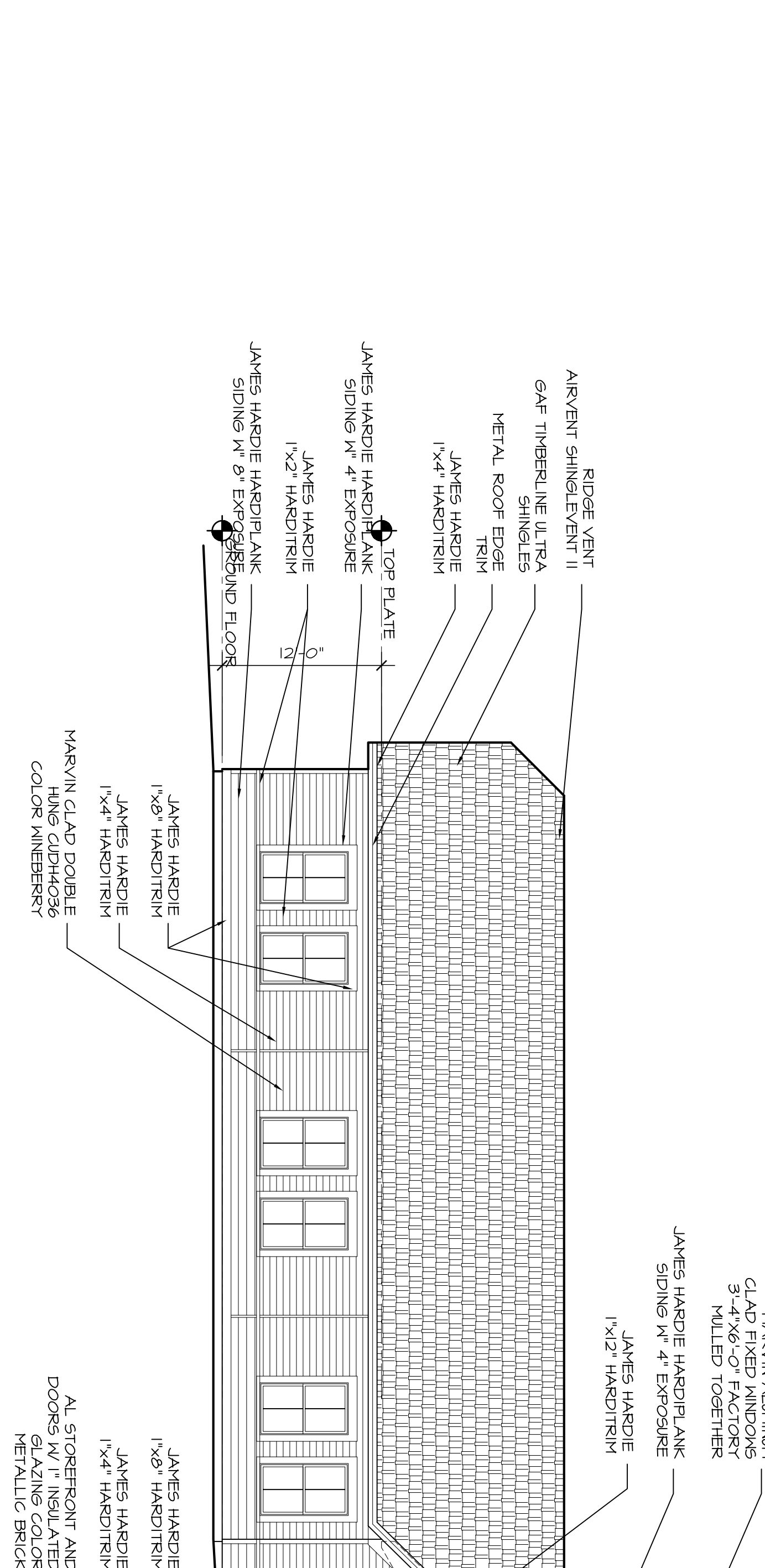
COPYRIGHT (C) BY CUBELLIS ASSOCIATES INC. ALL RIGHTS RESERVED.
 NO PART OF THIS DOCUMENT MAY BE REPRODUCED, STORED IN A RETRIEVAL SYSTEM, OR TRANSMITTED IN ANY FORM OR BY ANY MEANS, ELECTRONIC,
 MECHANICAL, PHOTOCOPYING, RECORDING OR OTHERWISE WITHOUT THE EXPRESS WRITTEN CONSENT OF CUBELLIS ASSOCIATES INC.
 ANY MODIFICATIONS MADE TO THIS DOCUMENT WITHOUT THE WRITTEN PERMISSION OF CUBELLIS ASSOCIATES INC. SHALL RENDER IT INVALID AND UNUSABLE.



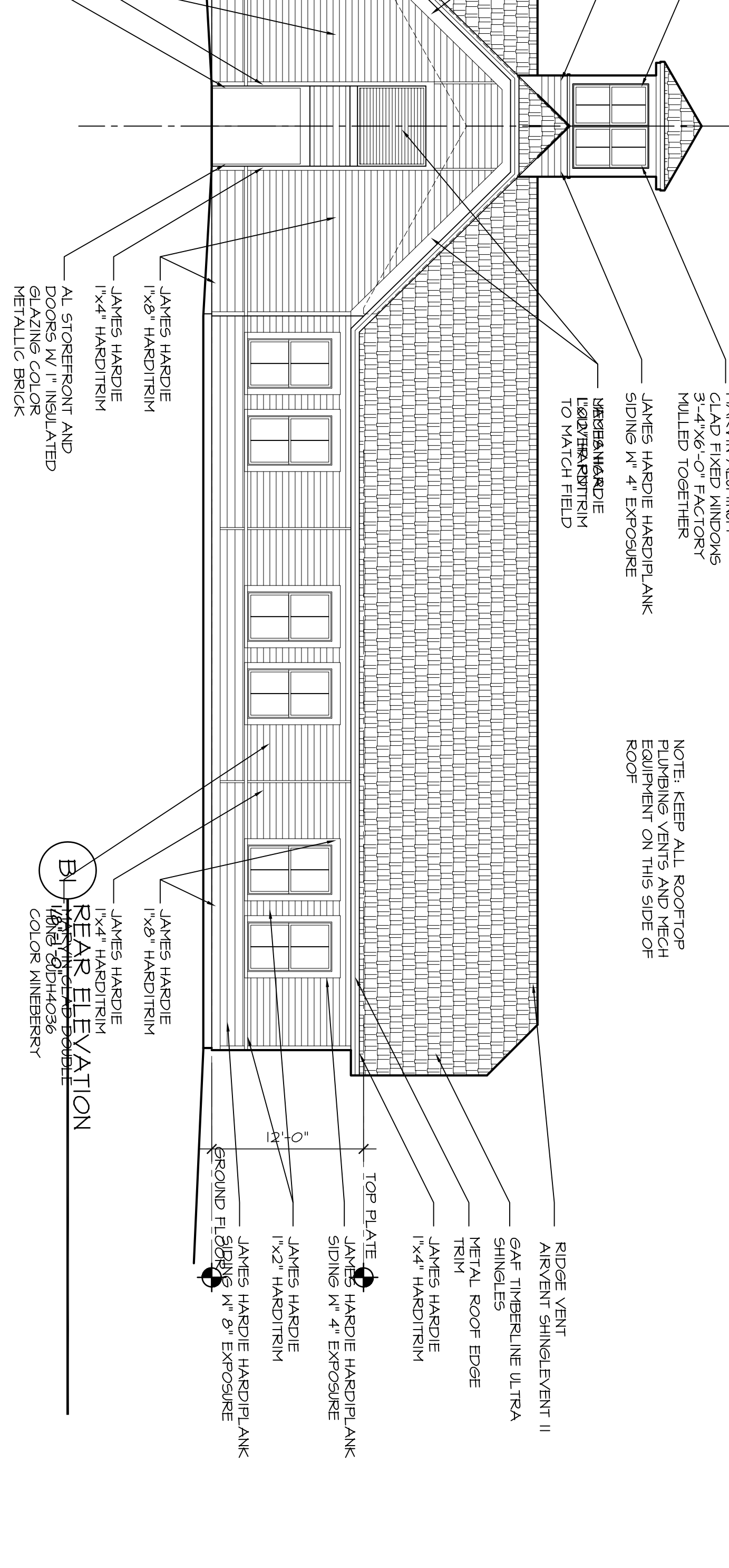
A2 SIDE ELEVATION
 1/8"=1'-0"



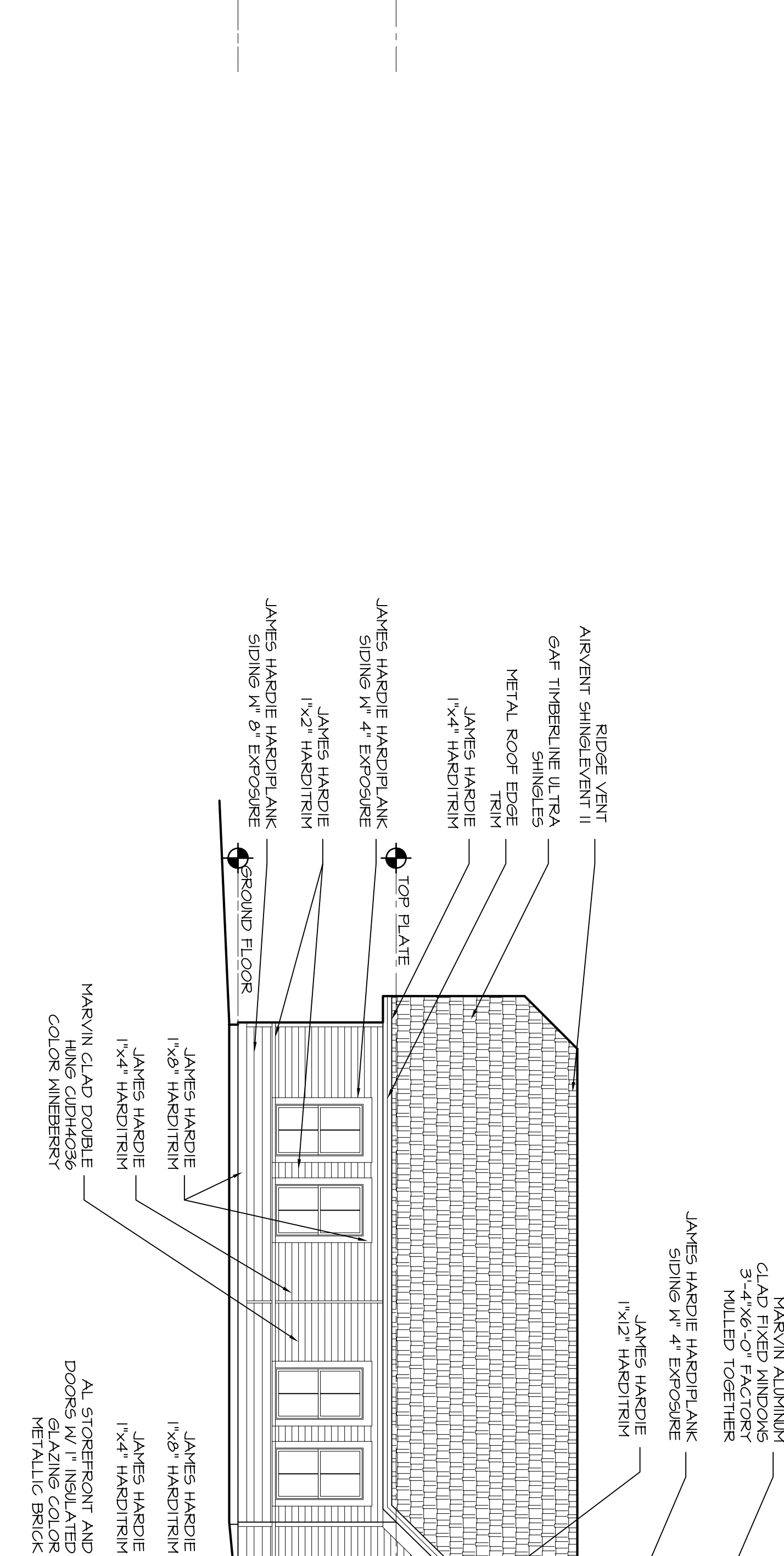
A1 SIDE ELEVATION
 1/8"=1'-0"



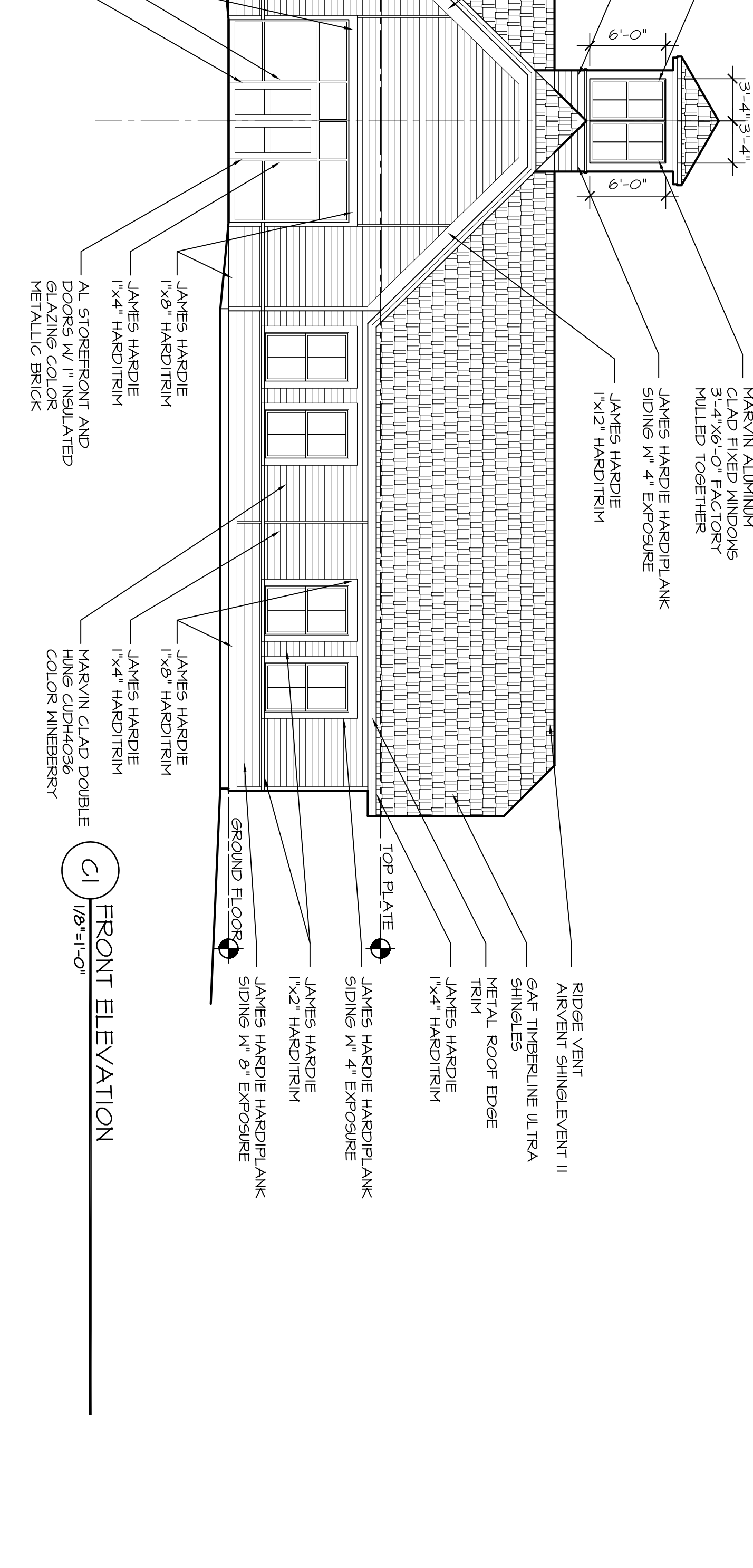
B1 REAR ELEVATION
 1/8"=1'-0"



B2 REAR ELEVATION
 1/8"=1'-0"



C1 FRONT ELEVATION
 1/8"=1'-0"



C2 FRONT ELEVATION
 1/8"=1'-0"

NOTE: KEEP ALL ROOFTOP
 FLUING VENTS AND MECH
 EQUIPMENT ON THIS SIDE OF
 ROOF

ROUNDHOUSE

BUILDING 3
 PORTLAND, MAINE

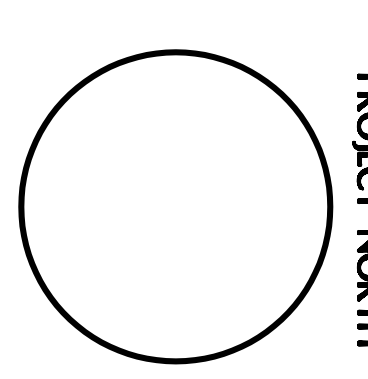
OWNER: JERRY ADE

Cubellis Associates Inc.
 Architecture Interiors Engineering
 Boston Philadelphia Chicago Portland, ME
 428 Fore Street, 3rd Fl.
 Portland, ME 04101
 Tel: 207-874-2777
 Fax: 207-874-2775
 www.cubellis.com

DATE	DRAWN BY	CHECKED BY	SCALE
	DVS	GDN	AS NOTED

TITLE: EXTERIOR ELEVATIONS
 SCALE: AS NOTED

NO	DATE	REVISIONS
1	08/18/05	PERMITTING
2		
3		
4		
5		
6		
7		
8		
9		
10		



A201
 05072PT