

3/7/2017 12:04 PM T:\02 PROJECTS - MAINE\4101-4200\415700-PC OFFICE RENOVATION DOCUMENT REVIEW\2 DESIGN\DWG\BLDG\PC CONSTRUCTION - OFFICE RENOVATION\DWG\415700-A-2 FURNITURE PLAN AND NOTES.DWG ADAM.COMSTOCK

ELECTRICAL NOTES

- ALL ELECTRICAL REQUIREMENTS TO BE CAREFULLY REVIEWED WITH GENERAL CONTRACTOR, ELECTRICIAN, TENANT AND TENANT'S IT VENDOR.
- ELECTRICAL CONTRACTORS SHALL COMPLY WITH ALL APPLICABLE CODES. THE INTENT OF THIS DRAWING INDICATES THE MINIMUM NUMBER OF RECEPTACLES REQUIRED FOR A SPECIFIC TASK OR LOCATION AS NEEDED. THE CONTRACTOR SHALL PROVIDE THE MINIMUM NUMBER OF RECEPTACLES REQUIRED BY CODE WITHIN THE SPACE.
- EXISTING ELECTRICAL RECEPTACLES SHALL BE REUSED WHERE POSSIBLE IF WITHIN 12" WHERE INDICATED. STAGGER OUTLETS; DO NOT 5SPACE WITHIN SAME STUD CAVITY.
- ELECTRICIAN/ENGINEER TO PROVIDE ELECTRICAL REQUIREMENTS FOR SPECIFIC EQUIPMENT PER MANUFACTURER SPECIFICATIONS.
- DATA/VOICE SHALL BE CAREFULLY COORDINATED BY GENERAL CONTRACTOR, TENANT AND THEIR VENDOR.
- ALL FACE PLATES FOR ELECTRICAL, VOICE, AND DATA SHALL BE UNIFORM IN COLOR/STYLE. MATCH EXISTING COLOR AND STYLE IN EACH SUITE.
- EACH OFFICE SHALL HAVE MINIMUM OF 2 CATEGORY 6 NETWORK WIRES AT THE DESK, TESTED & LABELED, TERMINATED INTO THE PATCH PANEL. ONE CAT 6 FOR PC AND ONE FOR TELEPHONE.

FURNITURE NOTES

- ALL FURNITURE AND EQUIPMENT (COPIERS, PRINTERS, TVs) SHALL BE PROVIDED BY TENANT.
- STIBLER ASSOCIATES SHALL ADVISE TENANT ON NEW FURNITURE SOURCES. FINISHES SHALL BE COORDINATED WITH DESIGNER, TENANT AND DEALERSHIP.
- FURNITURE DEALERSHIP SHALL COORDINATE SPECIFIC ELECTRICAL REQUIREMENTS NECESSARY FOR FURNITURE WITH THE DESIGNER, GC AND TENANT.

ELECTRICAL NOTES

WALL MOUNTED RECEPTACLES:

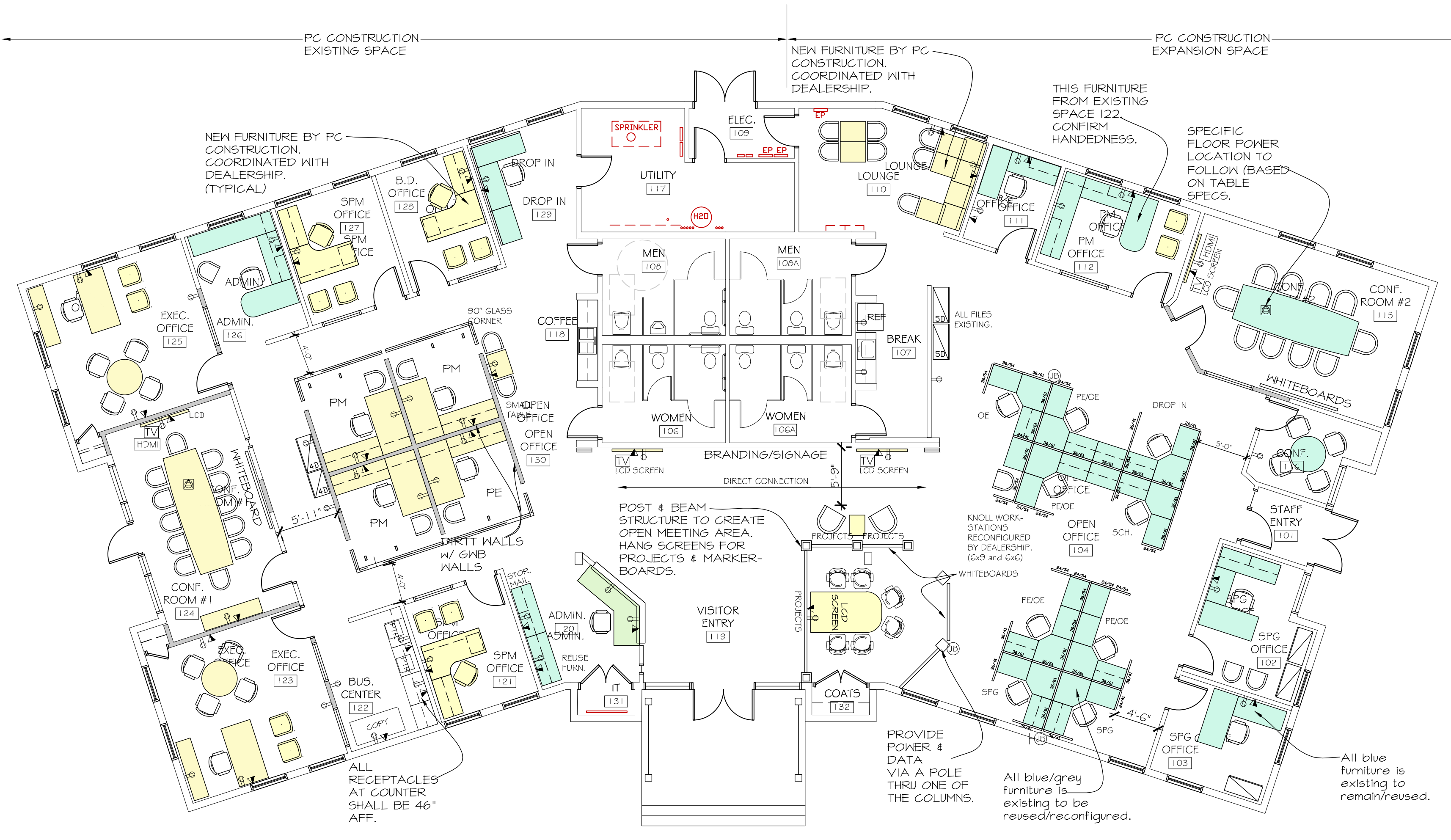
- ⇒ DUPLEX RECEPTACLE, GENERAL USE, 18" AFF UNLESS NOTED
- ⇒ DEDICATED USE DUPLEX RECEPTACLE, 110V, 20 AMP, 18" AFF UNLESS NOTED
- ⇒ DEDICATED USE DUPLEX RECEPTACLE, 220V, 30 AMP, 18" AFF UNLESS NOTED
- ⇒ QUADRUPLX RECEPTACLE, 18" AFF UNLESS NOTED
- ⇒ DUPLEX RECEPTACLE, 20 AMP WITH GFI, AS NOTED
- ⇒ RECEPTACLE WITH ONE OUTLET & 2 USB PORTS (HUBBLE OR EQUAL)
- ⇒ CAT 6/VOICE RECEPTACLE FOR TELEPHONE, WALL MOUNTED AT 48" AFF
- ⇒ CAT 6 DATA & VOICE RECEPTACLE, TWO PORTS ON ONE FACEPLATE, 18" AFF UNLESS NOTED
- TV LCD TELEVISION TO INCLUDE POWER, DATA, INTERNET AND CABLE. VERIFY WITH AV/IT VENDOR. ONE DUPLEX RECEPTACLE NEEDED BEHIND TV. OUTLETS AT 6'-0" AFF.
- WiFi WiFi, LOCATED IN CEILING BY IT VENDOR, CONTRACTOR PROVIDES POWER & DATA
- HDMI HDMI CABLE FROM FLOOR CORE TO FRONT WALL TV/LCD SCREEN, REVIEW CONDUIT SIZE W/ IT
- FAX FAX MACHINE, CONFIRM ANALOG LINE IF NEEDED

JUNCTION BOXES FOR SYSTEMS FURNITURE: (WHIPS FOR 8-WIRE SYSTEM)

- JB FOR SYSTEMS FURNITURE VIA ADJACENT WALL
- JB FOR SYSTEMS FURNITURE VIA POWER POLE
- JB FOR SYSTEMS FURNITURE VIA FLOOR POWER

RECESSED FLOOR BOX RECEPTACLES:

- FLOOR CORE WITH DUPLEX RECEPTACLE, 2 CATEGORY 6 NETWORK PORTS, AND HDMI CABLE TO RUN FROM FLOOR TO FRONT TV WALL.

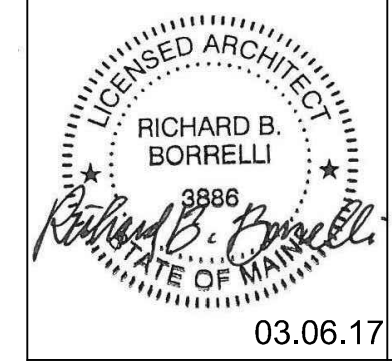


3 Executive Park Drive
Suite 106
Bedford, NH 03110
www.stibler.com

(603) 623-8952

Copyright © 2017 by Stibler Associates
No reproduction without permission.

REV.	DESCRIPTION	DATE
00	FOR PERMIT	03/06/2017



WBRC
ARCHITECTS • ENGINEERS
WWW.WBRCAE.COM
BANGOR, MAINE 207-947-4511
PORTLAND, MAINE 207-936-4511
SARASOTA, FLORIDA 941-556-0757

**PC CONSTRUCTION
OFFICE RENOVATION**
131 PRESUMPCOT ST.
PORTLAND, ME

**FURNITURE PLAN AND
NOTES**

SHEET TITLE:	415700 - A-2	
WBRC CAD FILE:	415700	GRAPHIC SCALE: 1" = 10'
PROJECT No.:	415700	SCALE: AS NOTED
SCALE:	N/A	SHEET No.:
PM:	AMC	A-2
DRAWN BY:	RBB	
A/E OF RECORD:		

A1 FURNITURE PLAN

1/8" = 1'-0"