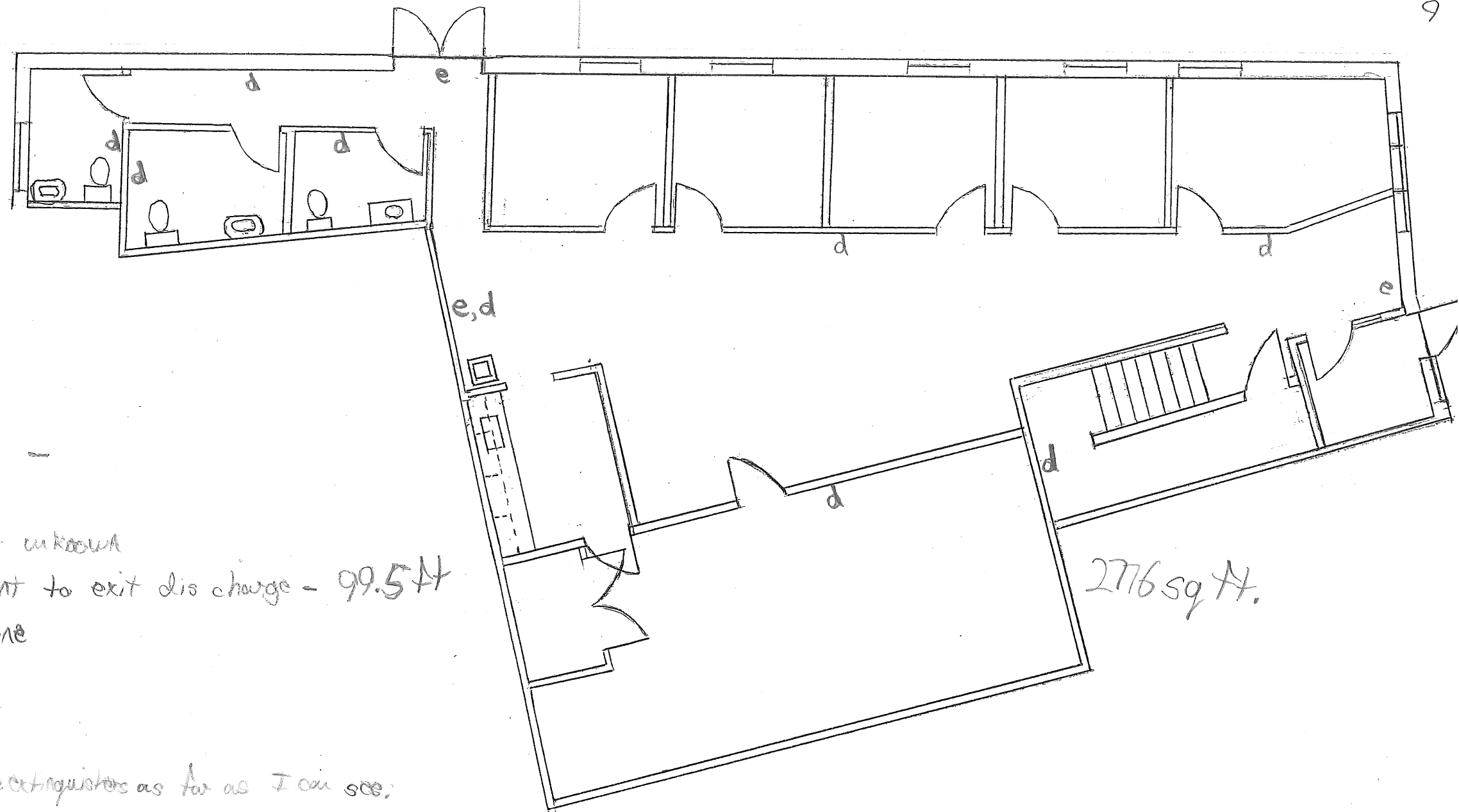


Life Safety Plan

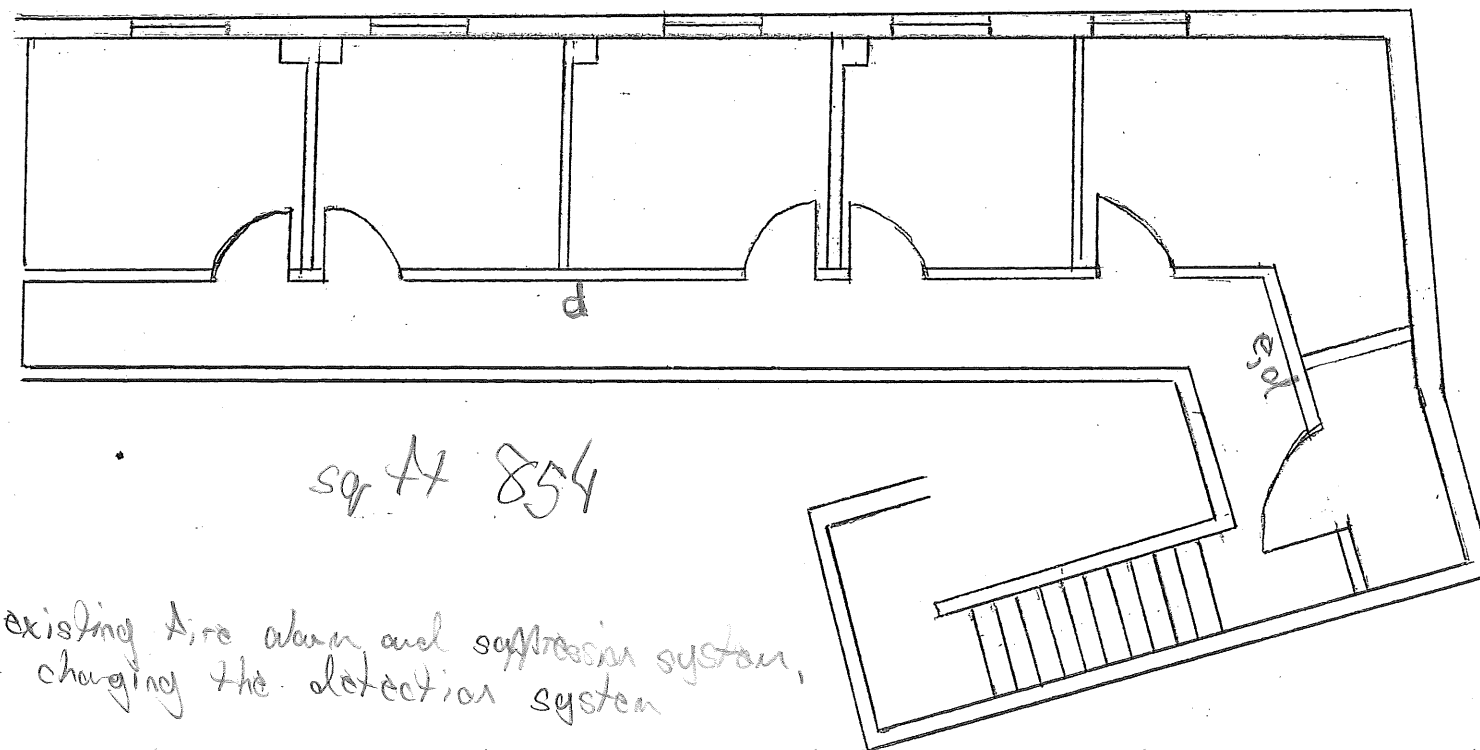
125 Presumpscot St, Suite 9
Portland, ME 04103

- a) Fire Resistance on means of Egress - unknown
- b) Travel distance from most remote point to exit discharge - 99.5 ft
- c) location of fire extinguishers - none
- d) location of emergency lighting
- e) location of exit signs
- f) requirements are met except for fire extinguishers as far as I can see.



Applicant & Architect

Ryan Bell
1 Court St. Suite 101
Augusta, ME 04330
(207) 485-0306



there is an existing fire alarm and suppression system,
we aren't changing the detection system