



ADMINISTRATIVE OFFICE OF THE COURTS
OFFICE RENOVATION
125 PRESUMPTCOT STREET #9
PORTLAND, MAINE

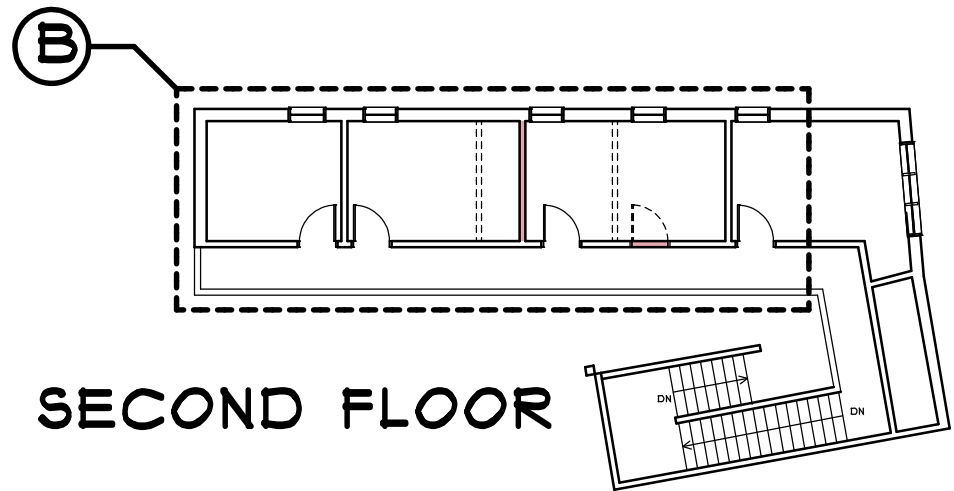


822 Grover Hill Rd.
Bethel, ME 04217
207.824.7237 voice/fax
info@smithreuter.com

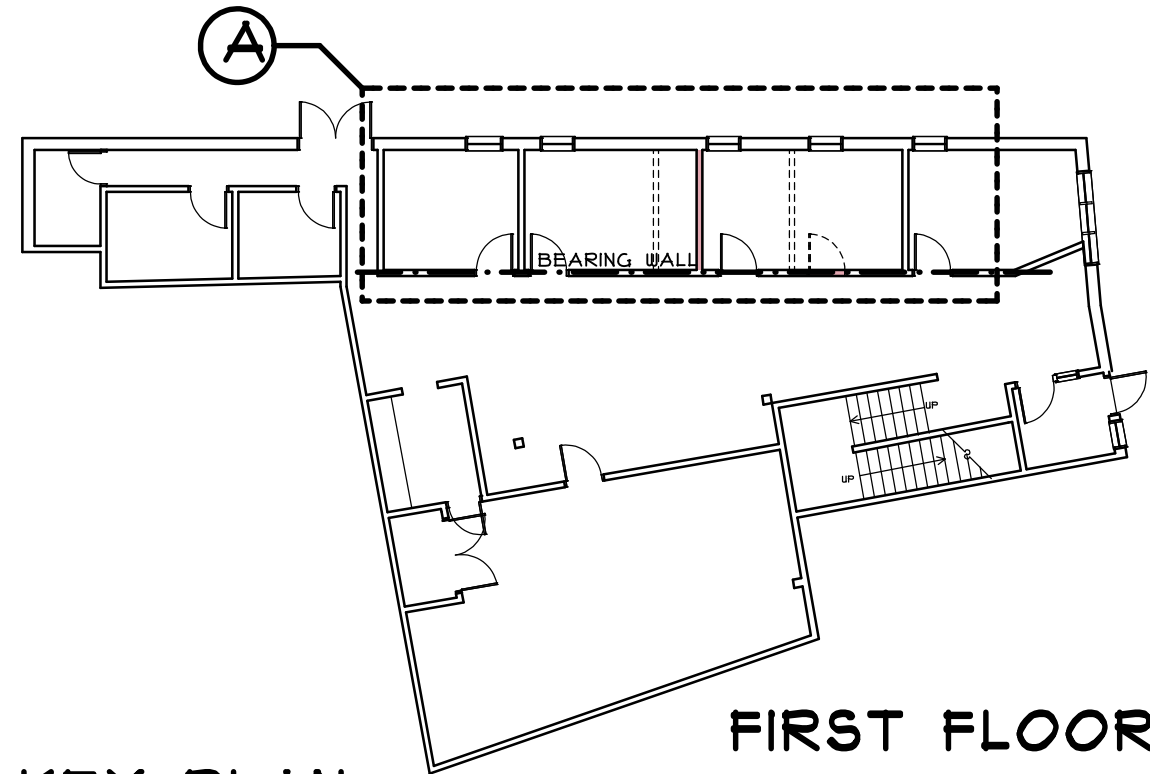
FLOOR PLANS

02/03/17 239-23

A1



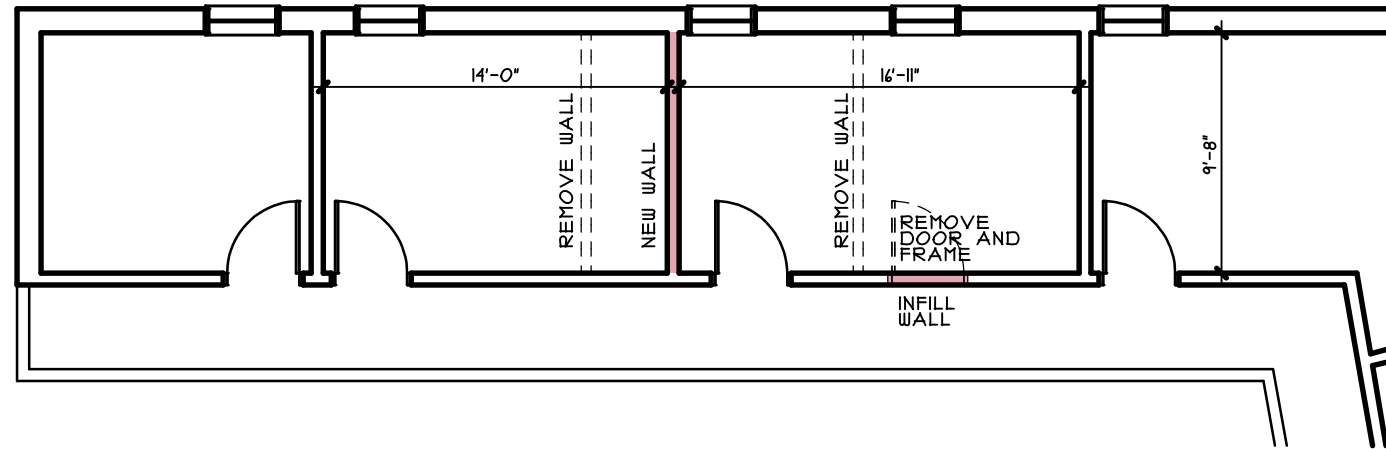
SECOND FLOOR



KEY PLAN

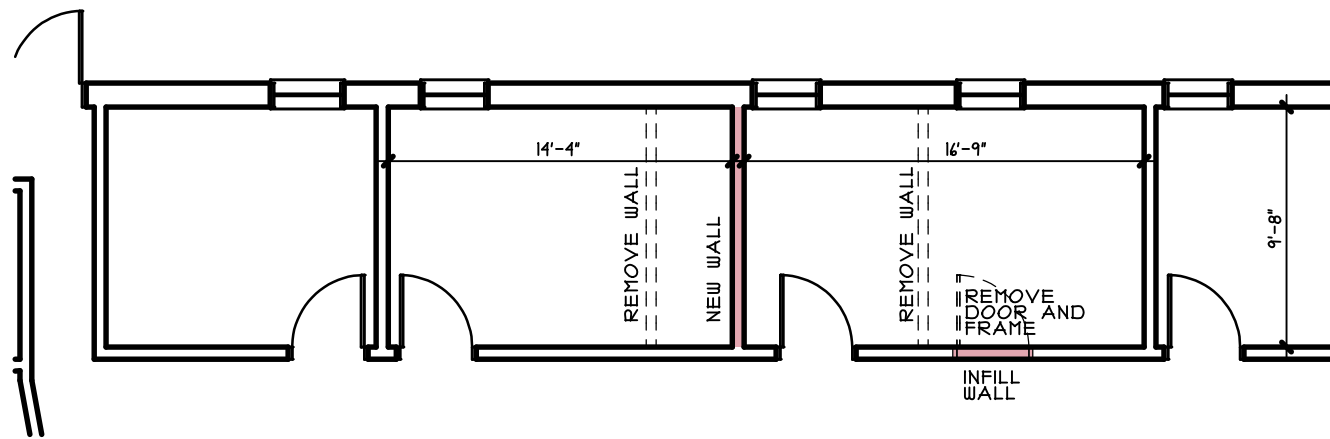
1/16" = 1'-0"

FIRST FLOOR



SECOND FLOOR PLAN

1/8" = 1'-0"



FIRST FLOOR PLAN

1/8" = 1'-0"

GRAPHIC SCALE

