

Renovations to the Roundhouse

125 Presumpscot Street
Portland, Maine

PROPERTY OF

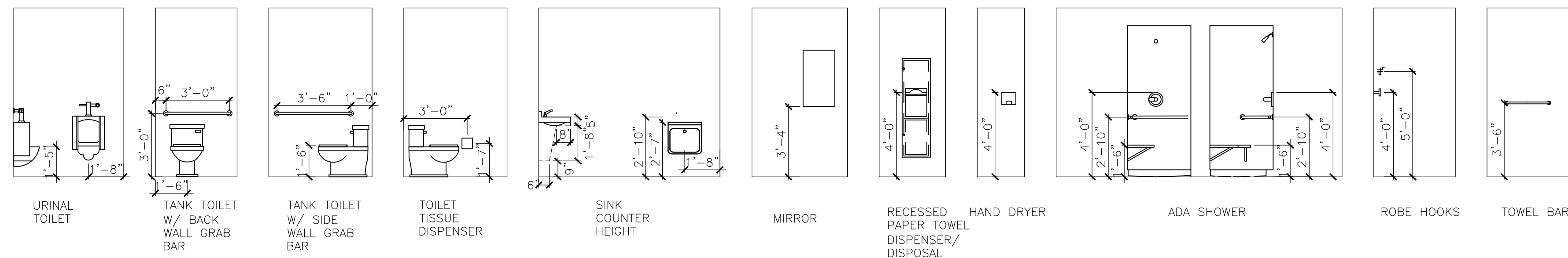


235 Riverside Industrial Parkway
Portland, ME 04102

RENOVATIONS TO ROUNDHOUSE

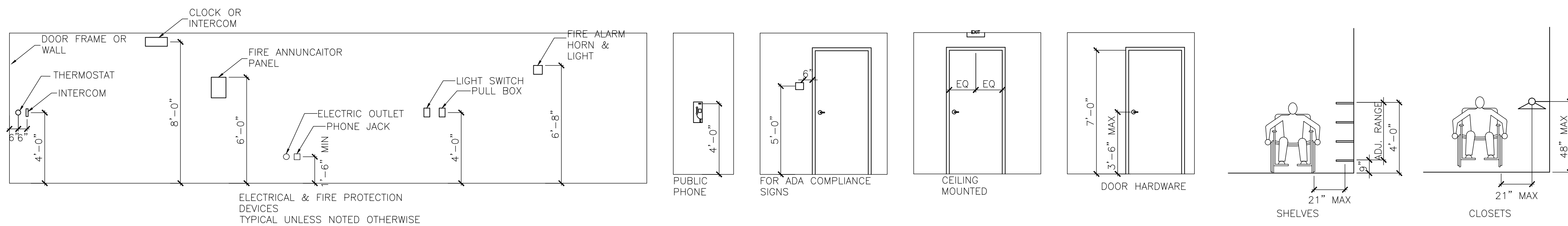
Presumpscott Street, Portland, Maine

BY	JUO
NO	REMARKS
A	ISSUED FOR PERMITTING
DATE	03-27-12
CODE:	IBC 2009
TOWN:	PORTLAND
DATE:	03-27-12
SCALE:	AS NOTED
DRAWN:	JUO
TITLE:	Cover Sheet
FILE:	051-010-10
SHEET:	A0-01



DRAWING LIST:

- A0.01 COVER/LEGEND SHEET
- A1.01 FLOOR PLAN
- A1.02 LIFE SAFETY PLAN
- A1.02 DOOR SCHEDULE



BUILDING CODE COMPLIANCE:

DESIGN CRITERIA - THIS PROJECT HAS BEEN DESIGNED FOR COMPLIANCE WITH THE FOLLOWING CODES:
 INTERNATIONAL BUILDING CODE (IBC) - 2009 EDITION
 NFPA 101 - 2006 EDITION
 ICC/ANSI A117.1 - 1998 EDITION
 UNDERWRITERS LABORATORY FIRE RESISTANCE RATING DESIGNS - 2003 EDITION

OCCUPANCY CLASSIFICATION - BUSINESS GROUP B
 USE CLASSIFICATION - PROFESSIONAL
 OCCUPANT LOAD
 BUSINESS GROUP (3,316 SQ.FT.) = 34
 REQUIRED EXISTS = 2
 CONSTRUCTION CLASSIFICATION - TYPE III

MAX TRAVEL DISTANCE TO EXIT = 43- FEET

FIRE PROTECTION SYSTEM REQUIREMENTS:
 A. AN AUTOMATIC SPRINKLER SYSTEM IS NOT REQUIRED.
 B. PORTABLE FIRE EXTINGUISHER RATING SHALL BE 2-A:20-B:C SPACING SHALL NOT EXCEED A MAXIMUM OF 75 FEET (1500 SQ. FT. / UNIT.)

FIRE ALARM AND DETECTION SYSTEM REQUIREMENTS:
 A. A FIRE ALARM AND DETECTION SYSTEM IS PROVIDED.

