

LEGEND
 TP-1 X Approximate Test Pit Location

NOTE:

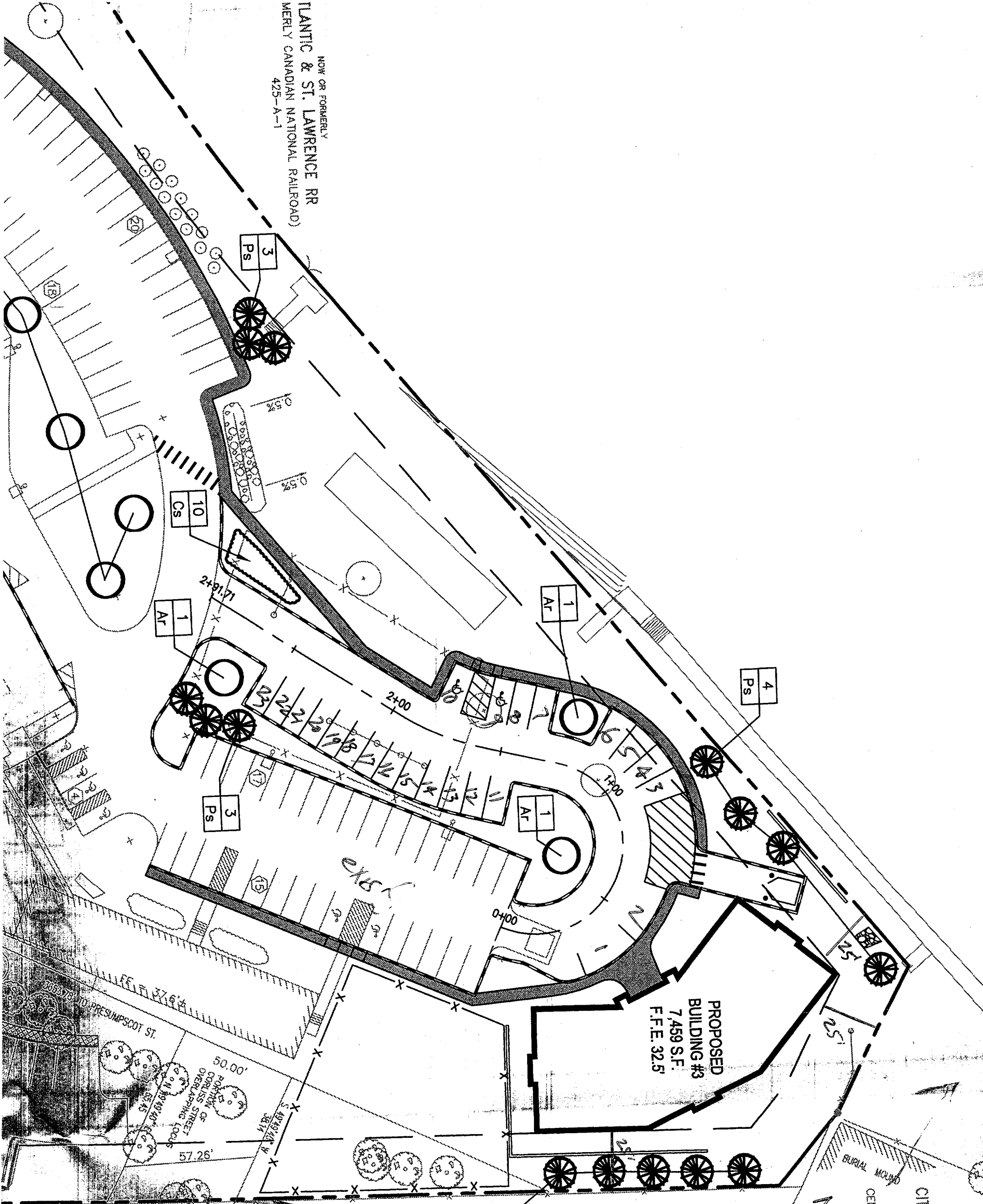
Base plan provided by DeLuca-Hoffman Associates.



S.W. COLE ENGINEERING, INC.
 ADE PROPERTY MANAGEMENT
EXPLORATION LOCATION PLAN

Proposed Building 1, 2 and 3
 125 Presumpscot Street
 Portland, Maine

NOW OR FORMERLY
ATLANTIC & ST. LAWRENCE RR
(FORMERLY CANADIAN NATIONAL RAILROAD)
425-A-1



NOW OR FORMERLY
CITY OF PORTLAND, ME

NOW OR FORMERLY
CITY OF PORTLAND, ME
CCRD 2638-208
(PRESUMPSCOT SCHOOL LOT)

Not a residential

Indus. Sch. lot

*Presumpsco + S
Pres. here*