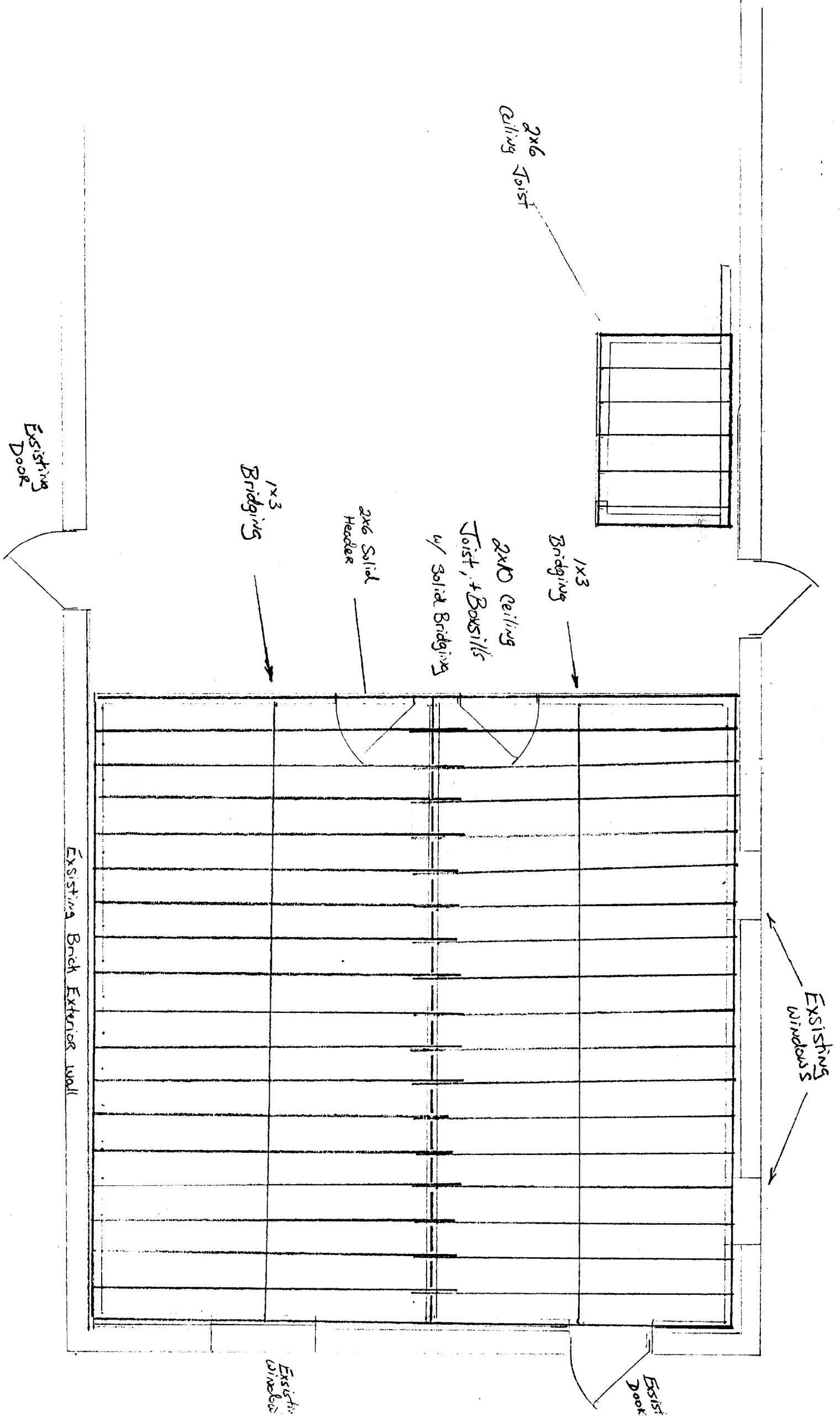
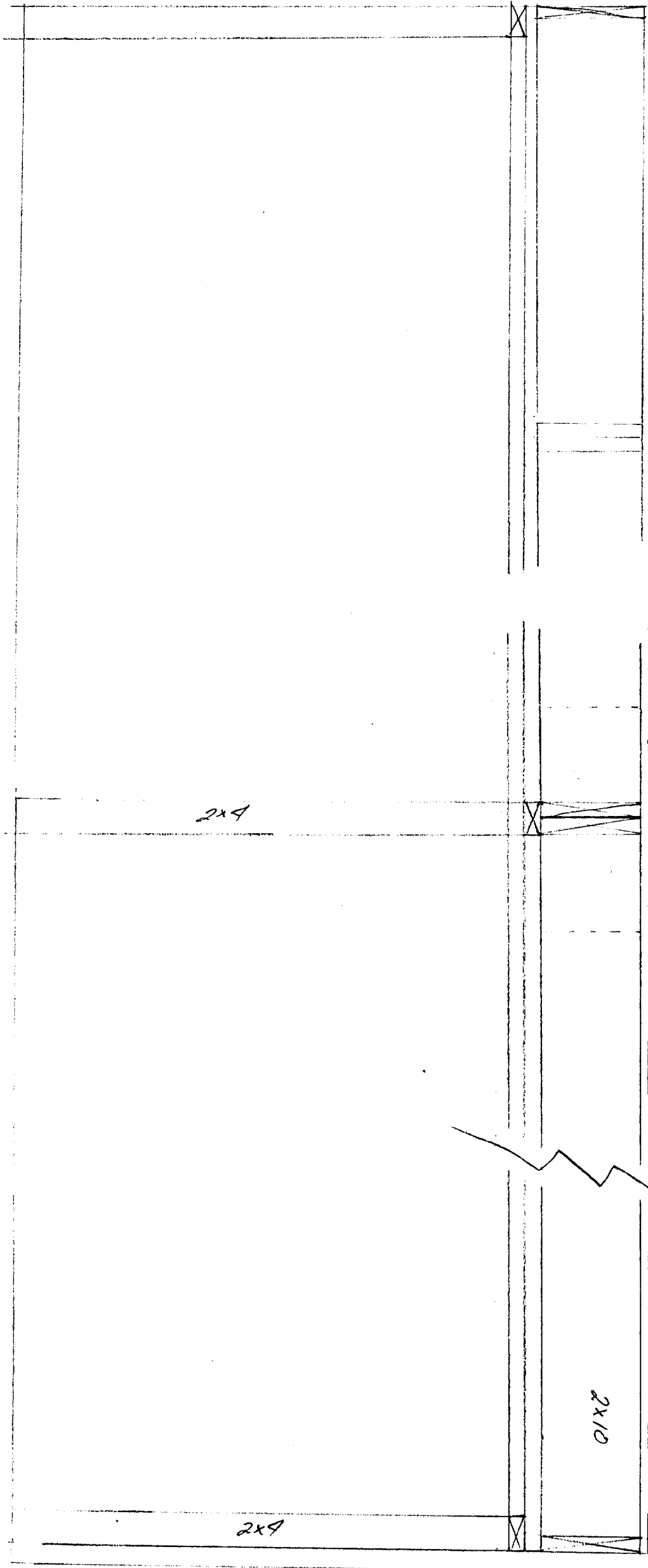


QTY.	DOORS : TYPE	R.O.
1	Construction Grade	30/60
1	Steel Door w/ Half Glass	30/60
1	CSG Steel door 6 panel	30/60
1	CSG Steel door 6 panel	28/60
1	LAUNDRY Flush 4 1/8 Tamb Return	26/60
	Existing Door	
1	Commercial Glass w/ steel frame 30/60	
	Existing Windows	
2	Brosco, Wood, Double Hung	
1	Wood, Double Hung	
	Sash opening 3' 2 1/2" x 3' 4 1/2" H	
	Sash opening 3' 8 1/4" x 5' 4 1/2" H	





Bridging Strapping
1/8" in the Joist
Length

Solid Bridging
Staggered

2x4

2x10

2x9

Section 1-1

125 PRESUMPTOR 57

1/4" SCALE

