



REV. DATE	STATUS

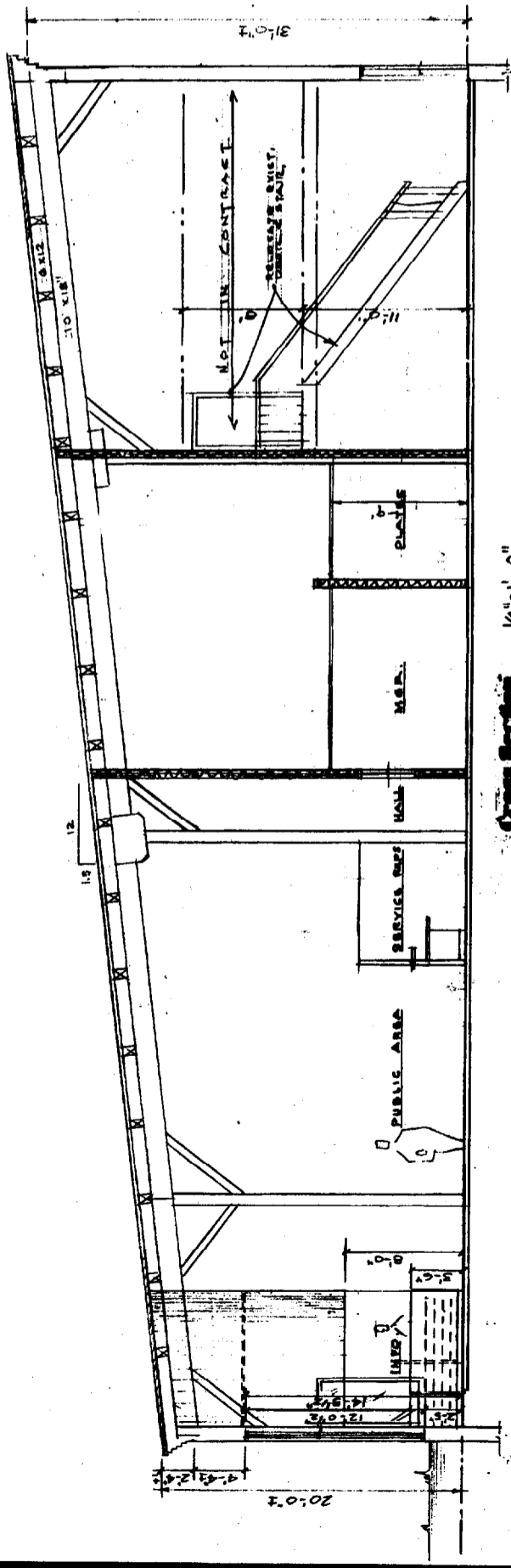
JOHN H. LEASURE ARCHITECT, INC.  
SIX O STREET  
SOUTH PORTLAND, MAINE 04106



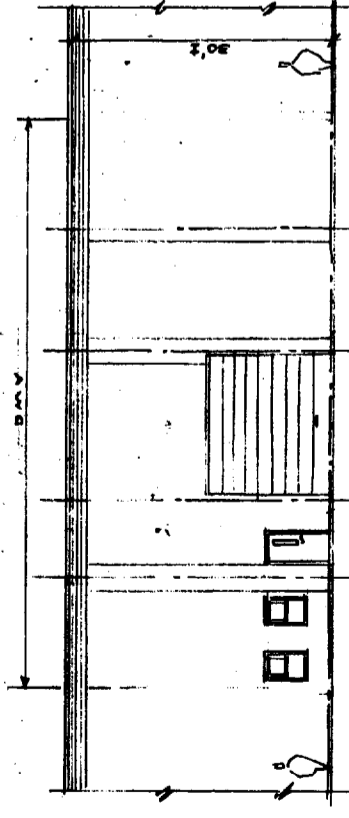
**A 2**

Portland Motor Vehicle Division  
Fremont Street  
Portland, Maine

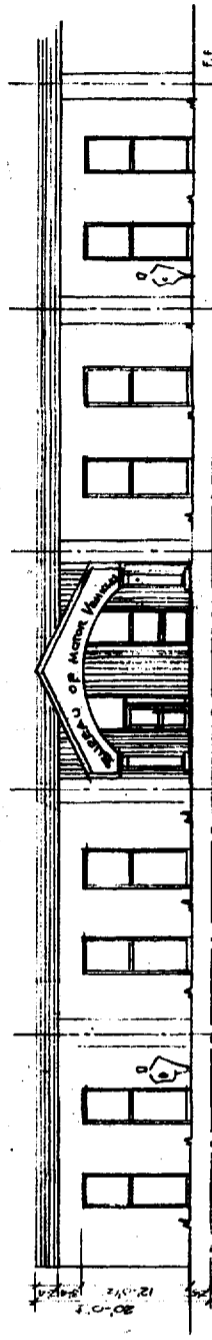
REV. MARCH 5, 2003



Cross Section 1/4"=1'-0"

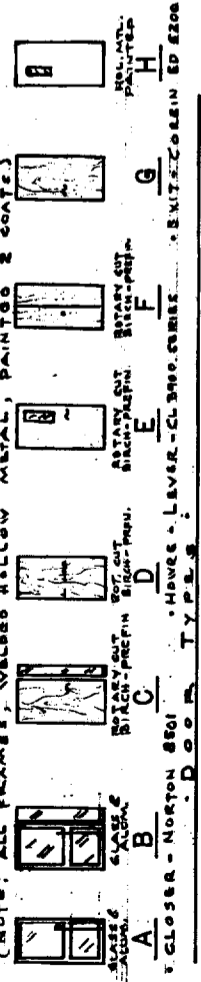


Door Elevation 1/8"=1'-0"



West Elevation 1/8"=1'-0"

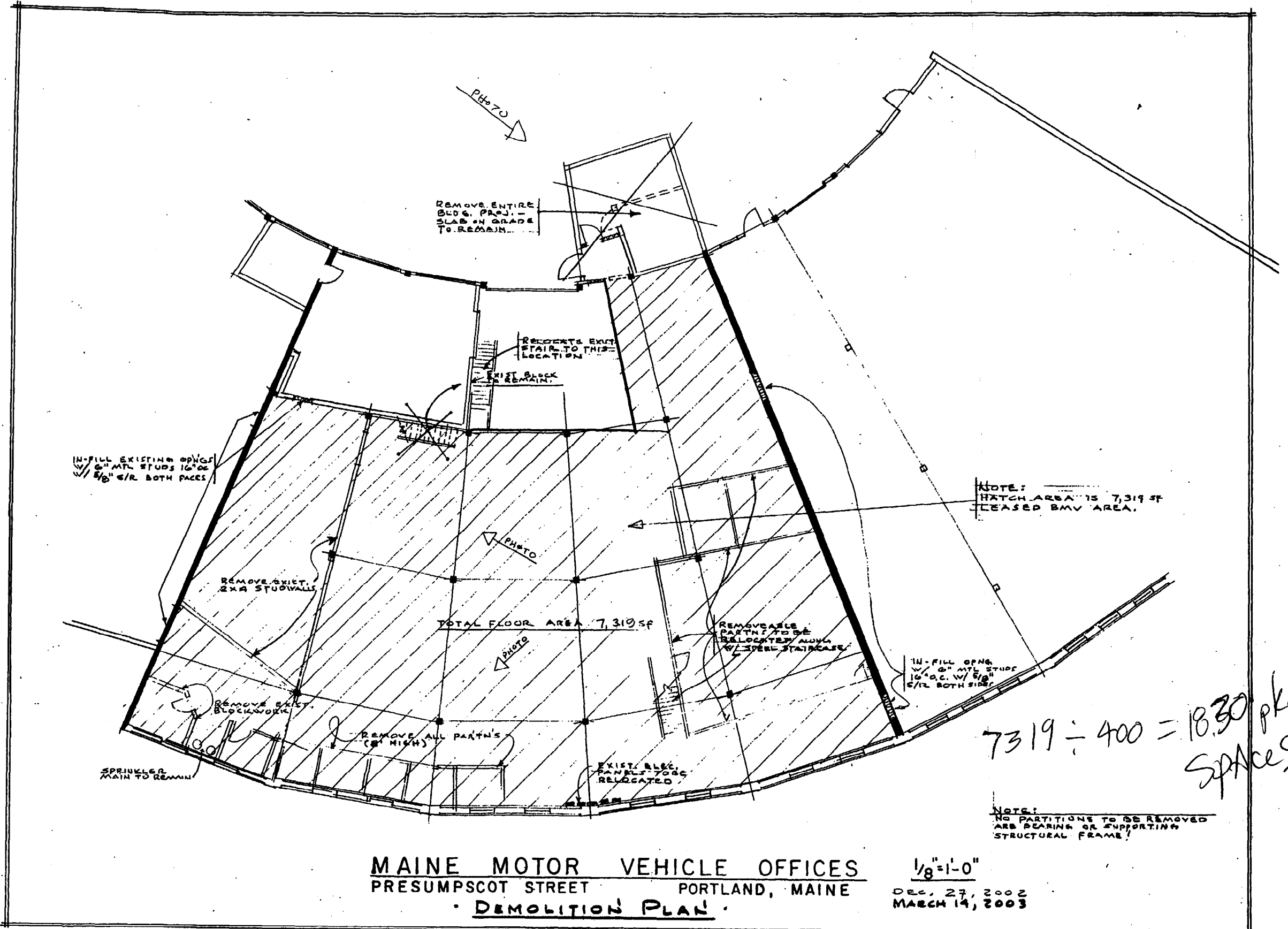
NO.	SIZE	TYPE/H'DWR	JAMB/FINISH	REMARKS
1	3/0 x 7/8	B	PANIC/BRONZ	PULL TRIM (4/8 x 5/8) - CLOSER
2	3/0 x 7/8	A		SEE INT. ELEV.
3	3/0 x 7/8	A		3/8 x 7/8 SIBELITE
4	3/8 x 3/8	D		PREFIN. THUMB LATCH - DEL. ACT. HINGE
5	3/8 x 7/8 x 1/4	D		
6	3/0 x 7/8 x 1/4	D		
7	3/0 x 7/8	F		
8	3/0 x 7/8	E		
9	3/0 x 7/8	D		
10	3/0 x 7/8	D		
11	3/0 x 7/8	D		
12	3/0 x 7/8	E		
13	3/0 x 7/8	E		
14	3/0 x 7/8	D		
15	3/0 x 7/8	D		
16	3/0 x 7/8	D		
17	3/0 x 7/8	E		
18	3/0 x 7/8	E		
19	3/0 x 7/8	D		
20	3/0 x 7/8	D		
21	3/0 x 7/8	C		
22	3/4 x 7/8	H		
23	3/0 x 7/8	C		
24	3/0 x 7/8	D		
25	3/0 x 7/8	D		
26	3/0 x 7/8	E		
27	3/0 x 7/8	E		
28	3/0 x 7/8	A		
29	3/0 x 7/8	C		
30	3/0 x 7/8	D		
31	3/0 x 7/8	D		
32	3/0 x 7/8	C		



NO.	NAME	FLOOR	BASE	CEILING	WALLS	REMARKS
100	COV. ENTRY	4 CONC.		1 1/2" T&G		V-GROOVE CLR. PTD
101	STAIR	CARPET	VINYL	ACT 15'		MUD CLEANING LANDING
102	INFORMATION					3' WAINWRIGHT BRICK ASV
103	PUBLIC AREA					3' WAINWRIGHT BRICK ASV
104	SERVICE REPS					CURBS BY LEASURE/ALSO PHOTO
105	MINI	VGT				
106	LOUNGE	VGT				
107	CONFERENCE	VGT				
108	OFFICE	VGT				
109	OFFICE	VGT				
110	OFFICE	VGT				
111	OFFICE	VGT				
112	OFFICE	VGT				
113	OFFICE	VGT				
114	OFFICE	VGT				
115	OFFICE	VGT				
116	OFFICE	VGT				
117	OFFICE	VGT				
118	OFFICE	VGT				
119	OFFICE	VGT				
120	OFFICE	VGT				
121	OFFICE	VGT				
122	OFFICE	VGT				
123	OFFICE	VGT				
124	OFFICE	VGT				
125	OFFICE	VGT				
126	OFFICE	VGT				
127	OFFICE	VGT				
128	OFFICE	VGT				
129	OFFICE	VGT				
130	OFFICE	VGT				
131	OFFICE	VGT				
132	OFFICE	VGT				
133	OFFICE	VGT				
134	OFFICE	VGT				
135	OFFICE	VGT				
136	OFFICE	VGT				
137	OFFICE	VGT				
138	OFFICE	VGT				
139	OFFICE	VGT				
140	OFFICE	VGT				
141	OFFICE	VGT				
142	OFFICE	VGT				
143	OFFICE	VGT				
144	OFFICE	VGT				
145	OFFICE	VGT				
146	OFFICE	VGT				
147	OFFICE	VGT				
148	OFFICE	VGT				
149	OFFICE	VGT				
150	OFFICE	VGT				
151	OFFICE	VGT				
152	OFFICE	VGT				
153	OFFICE	VGT				
154	OFFICE	VGT				
155	OFFICE	VGT				
156	OFFICE	VGT				
157	OFFICE	VGT				
158	OFFICE	VGT				
159	OFFICE	VGT				
160	OFFICE	VGT				
161	OFFICE	VGT				
162	OFFICE	VGT				
163	OFFICE	VGT				
164	OFFICE	VGT				
165	OFFICE	VGT				
166	OFFICE	VGT				
167	OFFICE	VGT				
168	OFFICE	VGT				
169	OFFICE	VGT				
170	OFFICE	VGT				
171	OFFICE	VGT				
172	OFFICE	VGT				
173	OFFICE	VGT				
174	OFFICE	VGT				
175	OFFICE	VGT				
176	OFFICE	VGT				
177	OFFICE	VGT				
178	OFFICE	VGT				
179	OFFICE	VGT				
180	OFFICE	VGT				
181	OFFICE	VGT				
182	OFFICE	VGT				
183	OFFICE	VGT				
184	OFFICE	VGT				
185	OFFICE	VGT				
186	OFFICE	VGT				
187	OFFICE	VGT				
188	OFFICE	VGT				
189	OFFICE	VGT				
190	OFFICE	VGT				
191	OFFICE	VGT				
192	OFFICE	VGT				
193	OFFICE	VGT				
194	OFFICE	VGT				
195	OFFICE	VGT				
196	OFFICE	VGT				
197	OFFICE	VGT				
198	OFFICE	VGT				
199	OFFICE	VGT				
200	OFFICE	VGT				

NOTE: ALL BRK. BACKWALK LEFT NATURAL - (2" HIGH WAINWRIGHT) - 4" MIN. STUCCO - (6" MIN. WY. 1/2" 5/8" FACE, PTD.

H. M. JAMES 1/2"=1'-0"



REMOVE ENTIRE BLDG. PROJ. - SLAB IN GRADE TO REMAIN

RELOCATE EXIST. STAIR TO THIS LOCATION

EXIST. BLOCK REMAIN

IN-FILL EXISTING OPNGS W/ 2" MTL STUDS 16" O.C. W/ 5/8" C/R BOTH SIDES

NOTE: HATCH AREA IS 7,319 SF LEASED BMV AREA.

TOTAL FLOOR AREA 7,319 SF

REMOVABLE PARTNS TO BE RELOCATED ALONG W/ STAIR STAIRCASE

IN-FILL OPNG W/ 2" MTL STUDS 16" O.C. W/ 5/8" C/R BOTH SIDES

REMOVE EXIST. 2X4 STUD WALLS

REMOVE EXIST. BLOCKWORK

REMOVE ALL PARTNS (8' HIGH)

EXIST. BLEG PANELS TO BE RELOCATED

SPRINKLER MAIN TO REMAIN

$7319 \div 400 = 18.30$  pkg spaces

NOTE: NO PARTITIONS TO BE REMOVED ARE BEARING OR SUPPORTING STRUCTURAL FRAME!

**MAINE MOTOR VEHICLE OFFICES**  
 PRESUMPCOT STREET PORTLAND, MAINE  
 • **DEMOLITION PLAN** •

1/8"=1'-0"  
 DEC. 27, 2002  
 MARCH 14, 2003