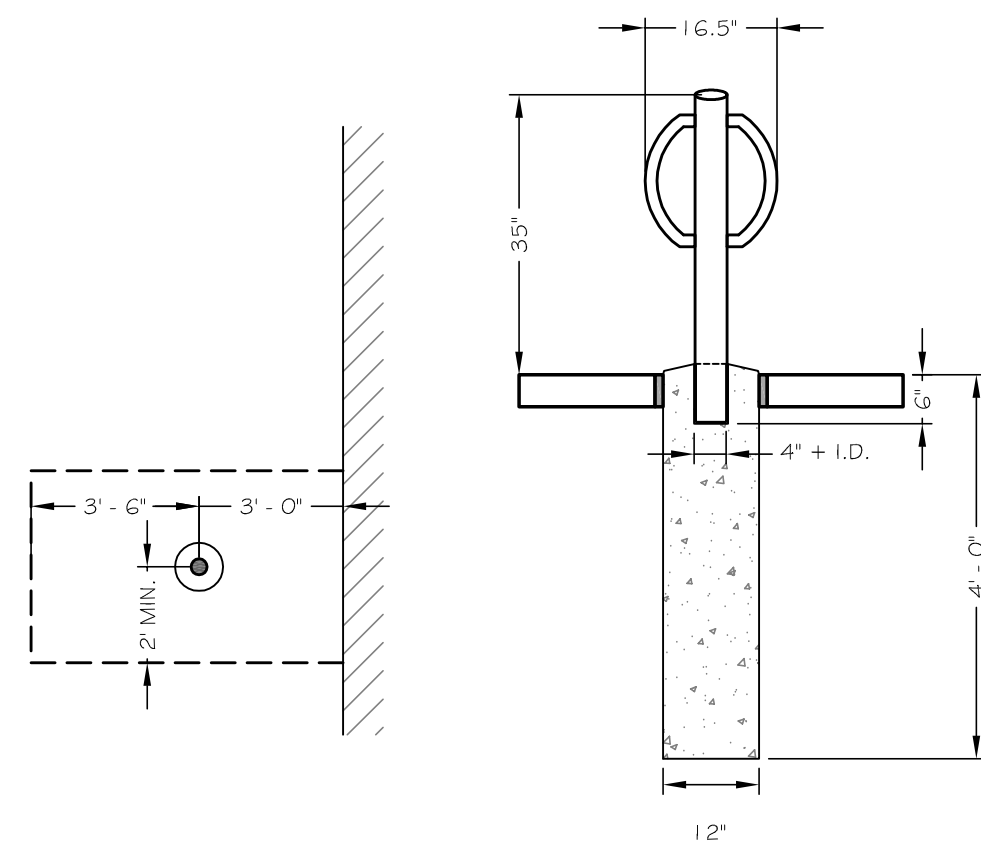
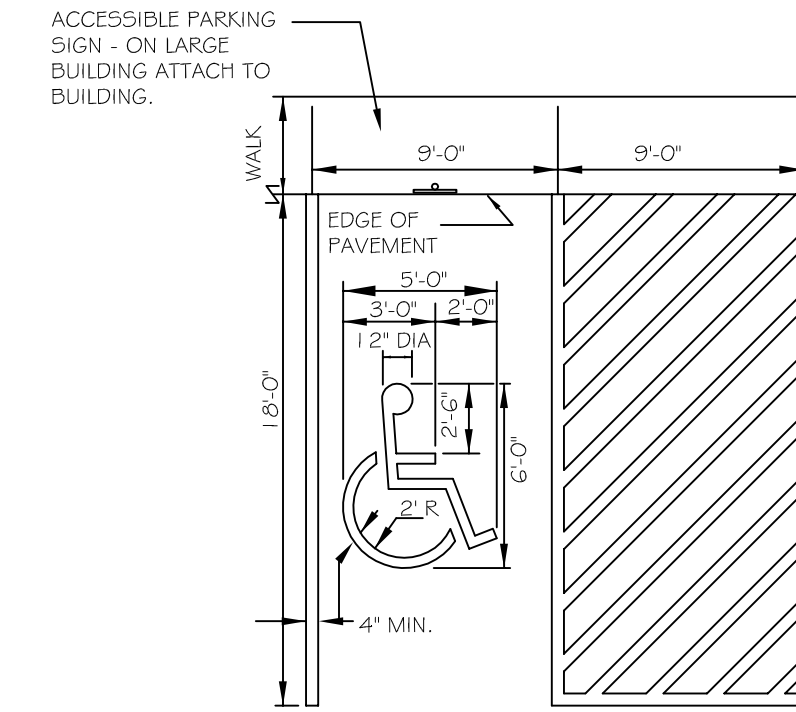


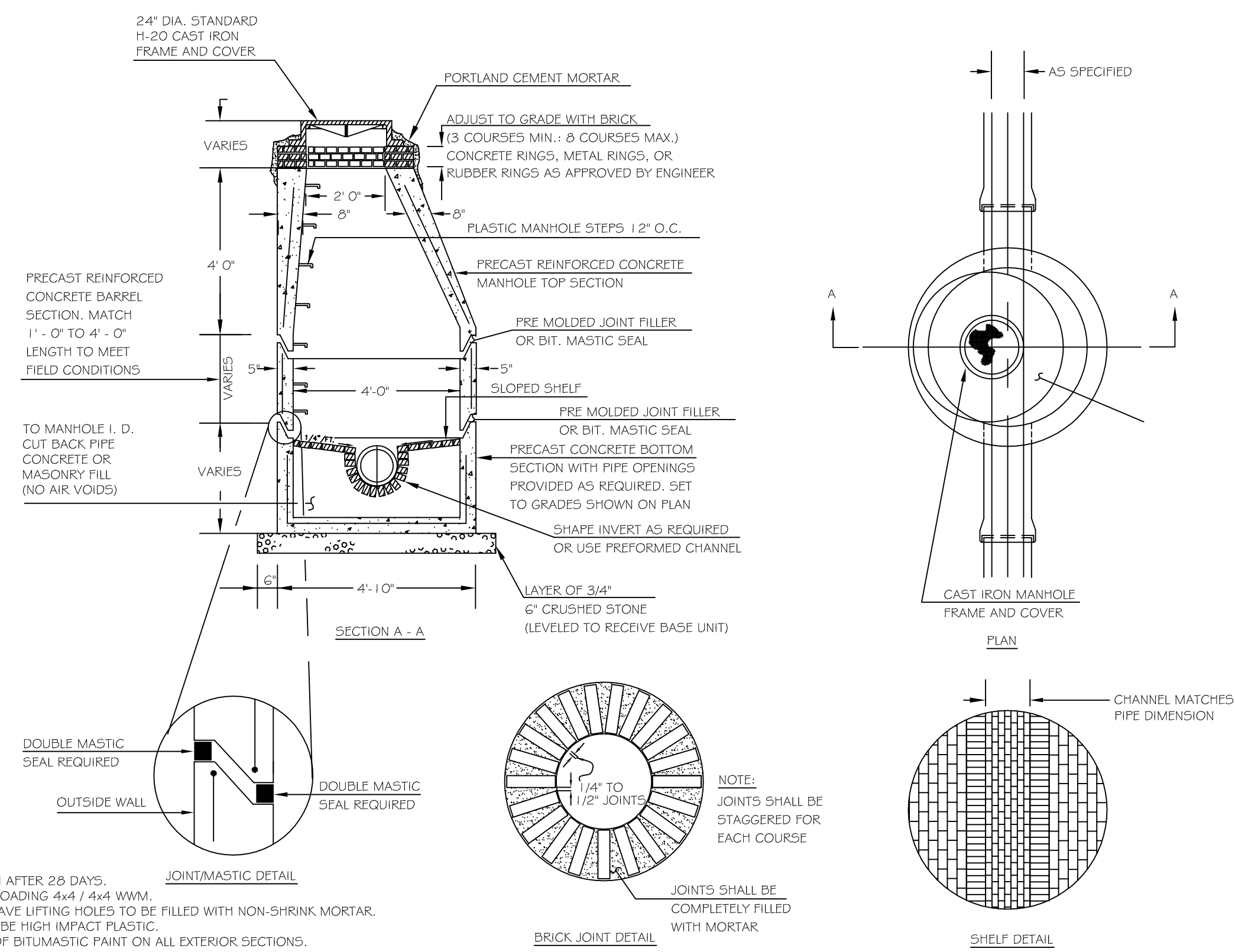
1 SEWER/STORM DRAIN CLEANOUT  
C-203 NOT TO SCALE



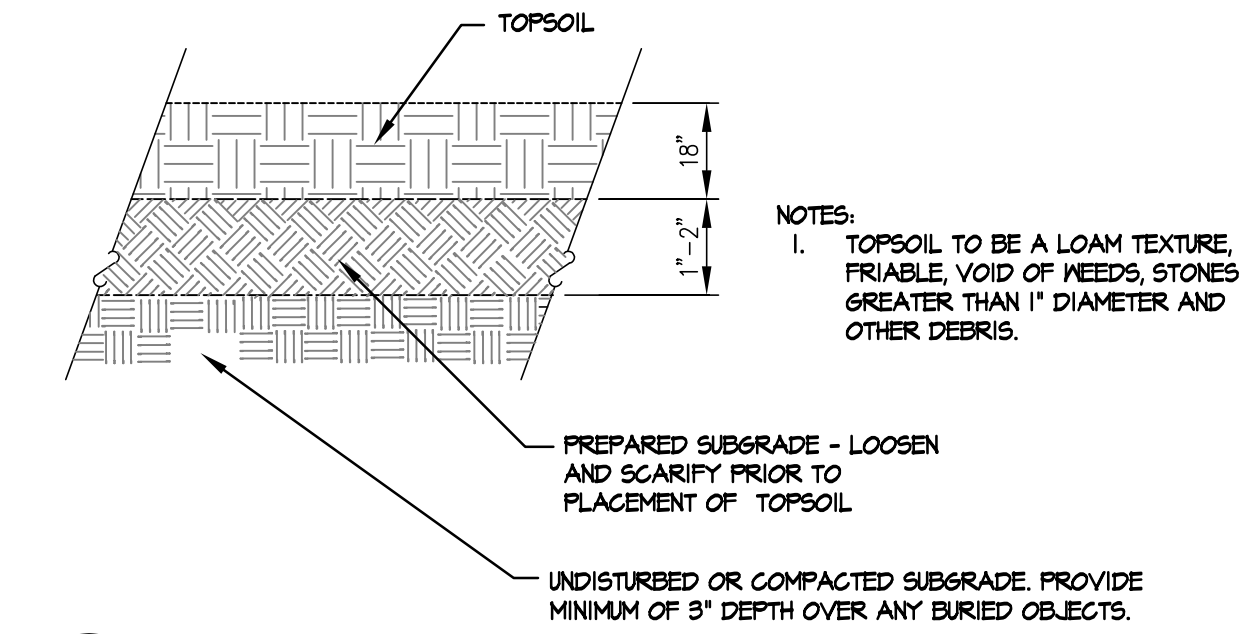
2 BIKE HITCH MOUNTING DETAIL  
C-203 NOT TO SCALE



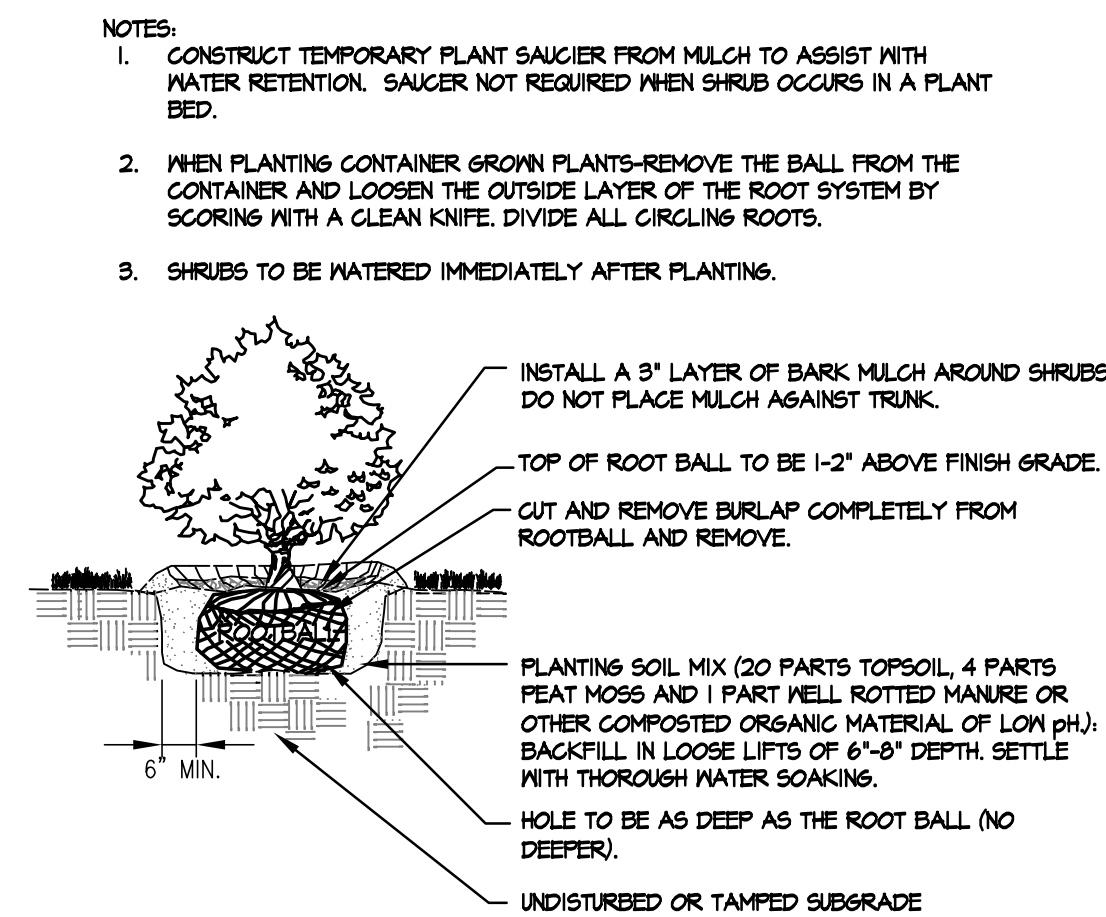
3 ACCESSIBLE PARKING STALL DETAIL  
C-203 NOT TO SCALE



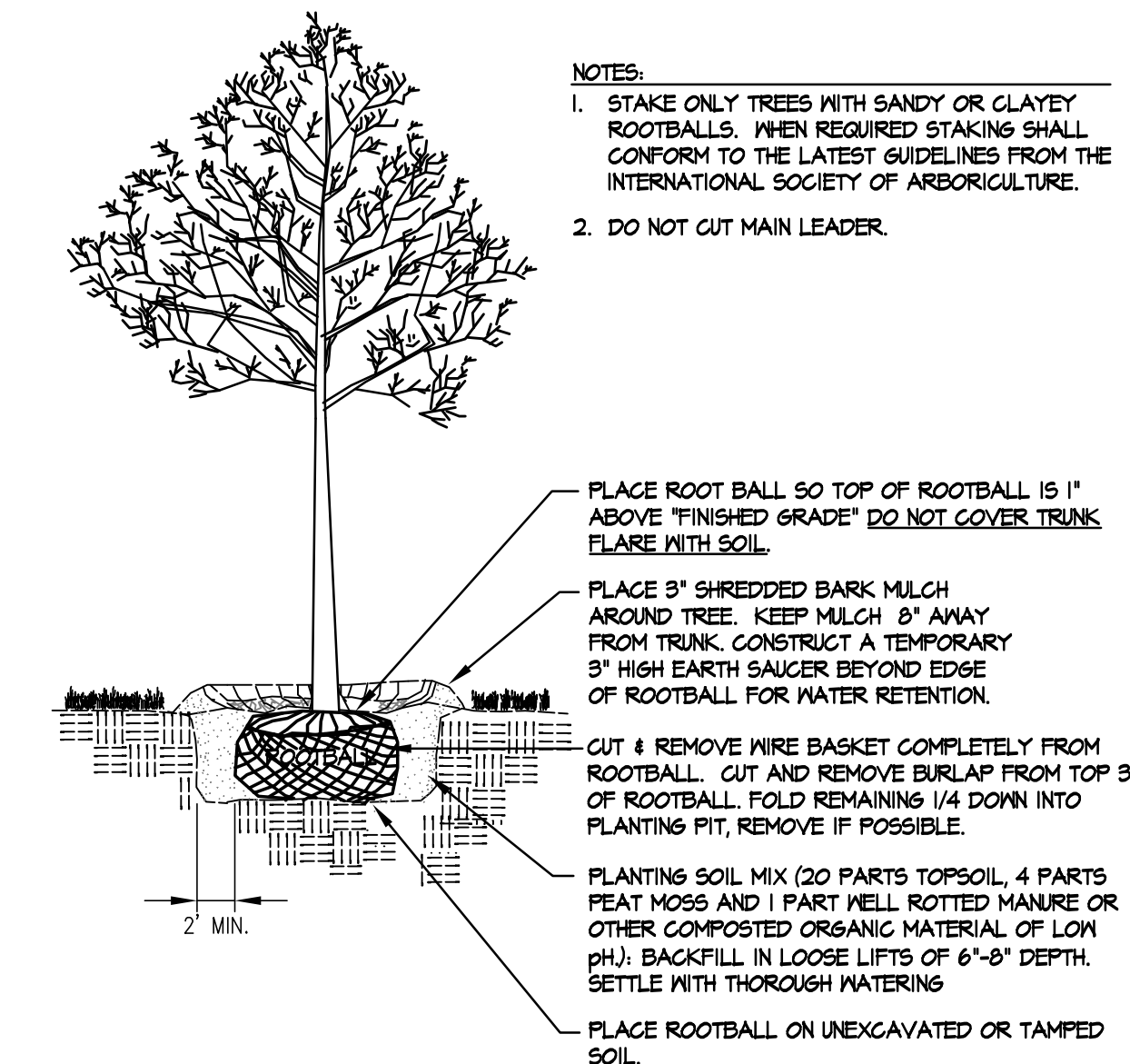
4 TYPICAL SANITARY MANHOLE  
C-203 NOT TO SCALE



5 PLANT BED DETAIL  
C-203 NOT TO SCALE



6 SHRUB PLANTING DETAIL  
C-203 NOT TO SCALE



7 TREE PLANTING DETAIL  
C-203 NOT TO SCALE

														<b>LAND DESIGN SOLUTIONS</b> LAND PLANNING, SITE PLANNING & LANDSCAPE ARCHITECTURE P.O. Box 316, 160 Longwoods Road, Cumberland, ME 04021 tel: (207) 494-1171		DESIGN: PBB DRAWN: DEPT. CHKD: PBB		<b>PROPOSED PRESUMPSCOT STREET BUSINESS PARK</b> 314-316 PRESUMPSCOT STREET, PORTLAND, MAINE		
										APPLICANT & OWNER: <b>JAKE'S DEVELOPMENT, INC.</b> 30 LEDGEWOOD DRIVE, FALMOUTH, MAINE 04105		DATE: NOV. 2017 SCALE: N.T.S.		<b>SITE DETAILS</b>		PROJ. NO. 16-115 DWG. NO. C-203				
A	11/30/17	SUBMITTED TO THE CITY OF PORTLAND FOR LEVEL 2 SITE PLAN APPLICATION			DEPT.	SWC	PBB													
REV.	DATE	STATUS			BY	CHKD.	APPD.	REV.	DATE	STATUS			BY	CHKD.	APPD.					