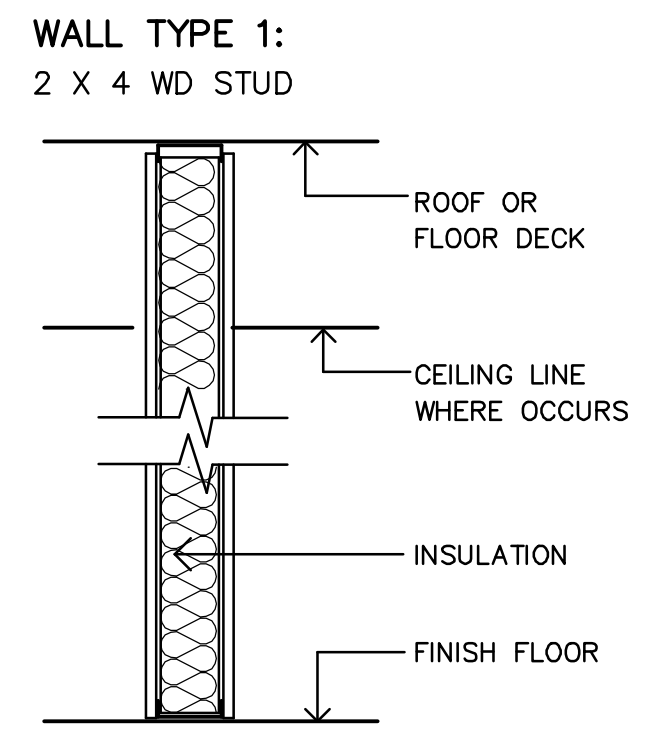
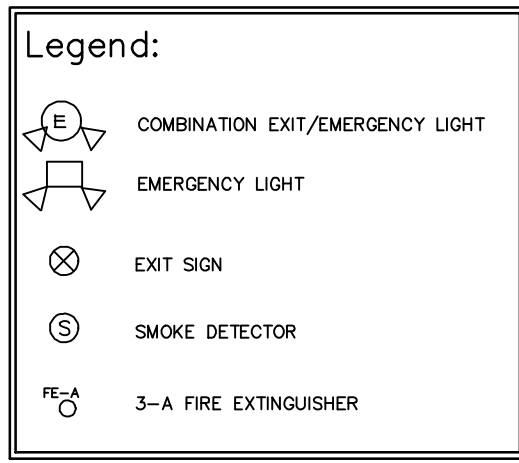
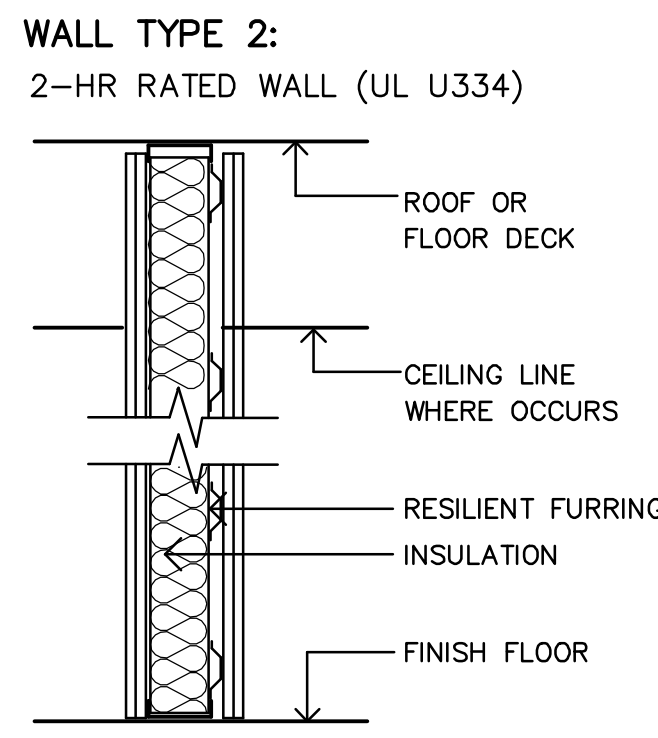


Window Schedule										
Number	Label	Qty	Floor	Size	Width	Height	R/O	Description	Header	U VALUE
A	2840DH	4	1	2840DH	32"	48"	33"x49"	Double Hung	2x10x36" (3)	0.28
B	2840DH	13	2	2840DH	32"	48"	33"x49"	Double Hung	2x10x36" (3)	0.28

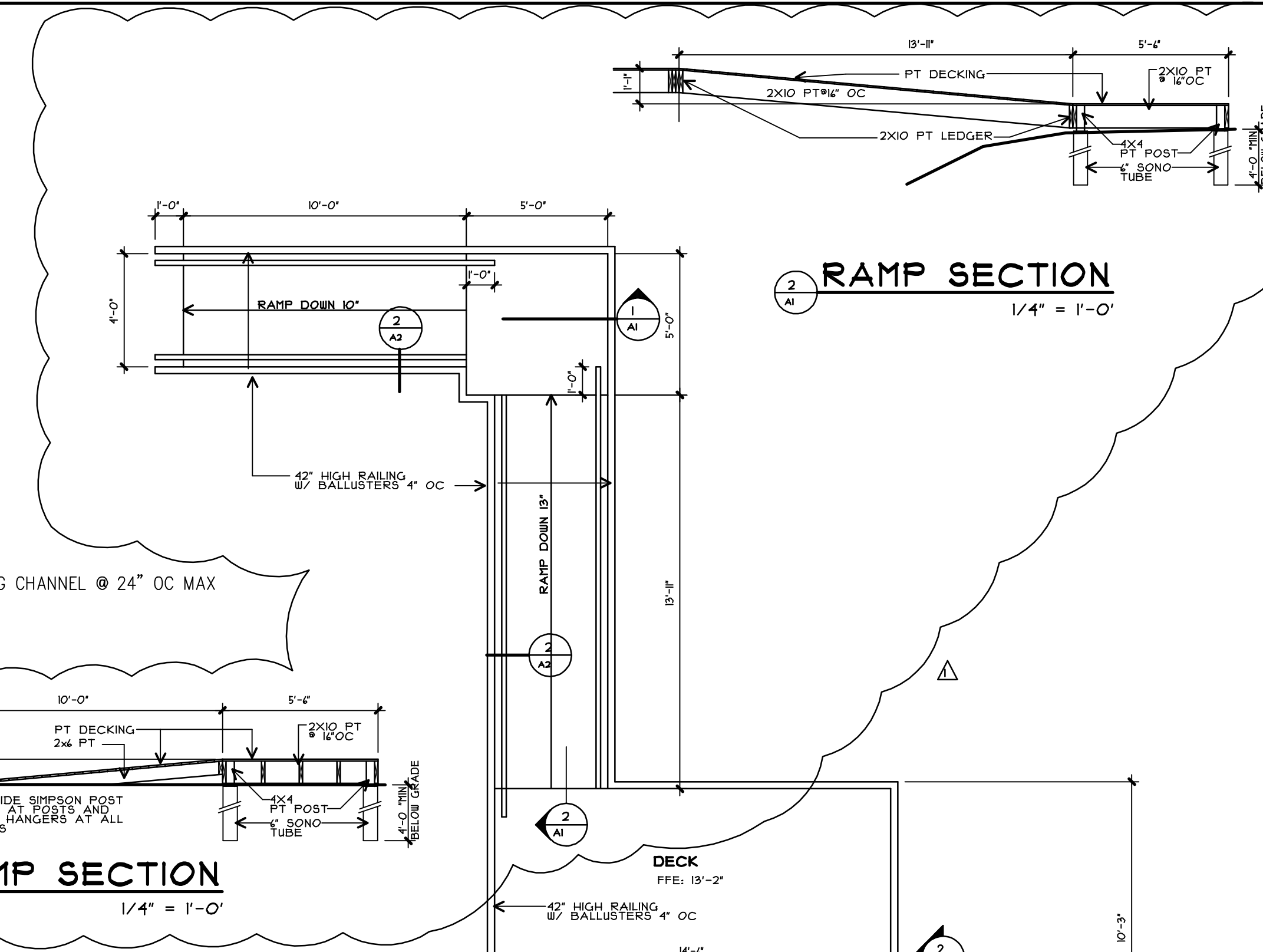
Door Schedule										
Number	Qty	Floor	Width	Height	Description	Header	Thickness	Code	Comments	
D01	2	1	120"	144"	Garage-Panel	5 1/4x11 7/8LVL	1 3/4"			
D02	1	2	24"	84"	Hinged-Door P04	2x6x29" (2)	1 3/8"			
D03	1	1	36"	84"	Hinged-Door P04	2x6x39" (2)	1 3/8"	90MIN	CLOSER	
D04	1	1	30"	84"	Hinged-Door P04	2x6x35" (2)	1 3/8"			
D05	1	1	36"	84"	ext. Hinged-Door E15	2x6x46 1/2" (3)	1 3/4"		CLOSER	
D06	1	1	36"	84"	Hinged-Door E15	2x6x41" (2)	1 3/4"	90MIN	CLOSER	
D07	1	1	36"	84"	ext. Hinged-Door E15	5 1/4x11 7/8LVL	1 3/4"		CLOSER	
D08	1	2	36"	84"	ext. Hinged-Door E01	2x6x41" (3)	1 3/4"		CLOSER	
D09	2	2	36"	84"	Hinged-Door P04	2x6x41" (2)	1 3/8"			
D10	1	2	36"	84"	Hinged-Slab	2x6x41" (2)	1 3/8"	90MIN	CLOSER	
D11	2	2	36"	84"	Hinged-Door P04	2x6x41" (2)	1 3/8"			



TYPE	DESCRIPTION
1	5/8" GPDW 2X4 WOOD STUDS @ 16" OC 3.5" KRAFT 15" INSULATION 5/8" GPDW



TYPE	DESCRIPTION
2	(2) LAYERS 5/8" TYPE-X GPDW 2 1/2" W X 1/2" D RESILIENT FURRING CHANNEL @ 24" OC MAX 2X4 WOOD STUDS @ 16" OC 2" THICK MINERAL WOOL INSULATION (2) LAYERS 5/8" TYPE-X GPDW



GENERAL NOTES:

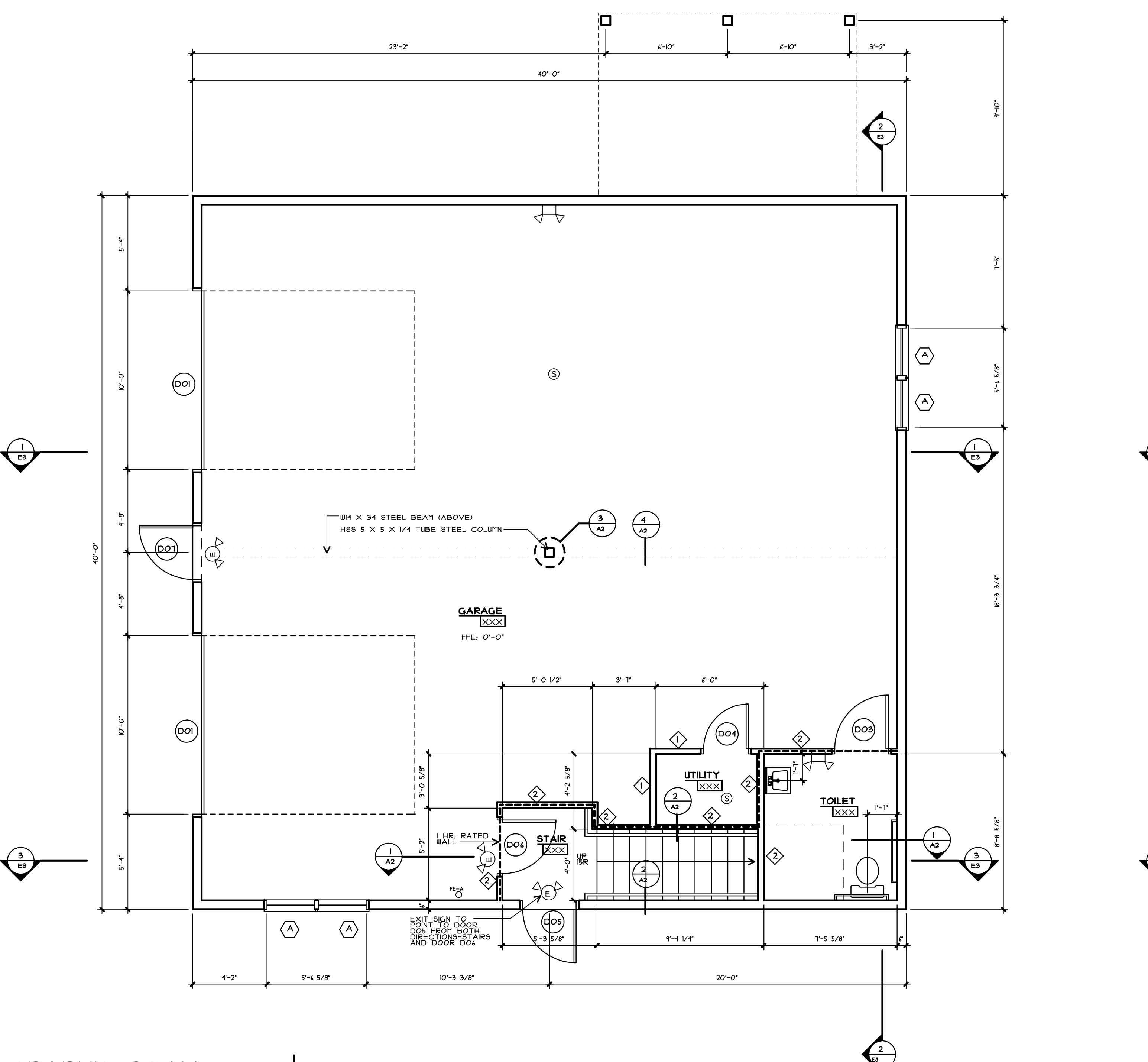
- ALL HAN DOORS TO HAVE LEVER HANDLES
- GC TO PROVIDE BLOCKING FOR FUTURE GRAB BARS IN TOILETS
- ALL DIMENSIONS ARE TO FACE OF STUD
- MECHANICAL, ELECTRICAL AND PLUMBING ARE DESIGN/BUILD

CODE REVIEW NOTES:

100 SF BUSINESS GROUP B - OCCUPANT LOAD 16 PEOPLE 100 SF/PERSON
TRAVEL DISTANCE LESS THAN 100' TO EXIT, ONE EXIT REQUIRED

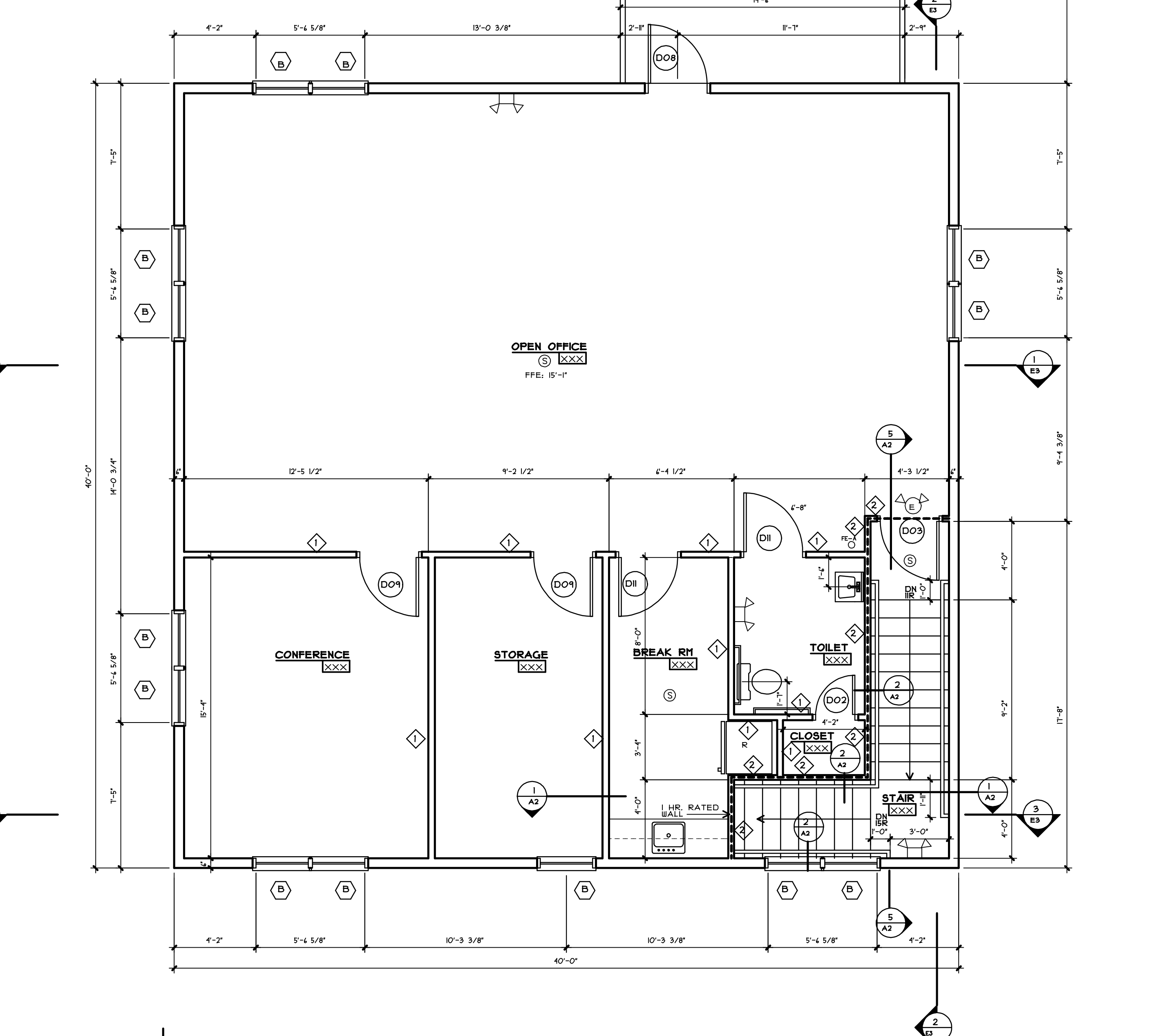
100 SF GARAGE GROUP U - OCCUPANT LOAD 8 PEOPLE (200 SF/PERSON)
NO SPRINKLER OR FIRE ALARM SYSTEMS REQUIRED

2 HOUR FIRE RATED SEPARATION BETWEEN STORAGE AND BUSINESS OCCUPANCIES
INSULATION R VALUES: ROOF R-49 5" BLOWN CELLULOSE, EXTERIOR WALLS R-23 5.5" ROXUL, STORAGE CEILING R-38 12" KRAFT 1"
EXTERIOR DOORS HAVE U VALUE OF 0.14 AT GLAZING

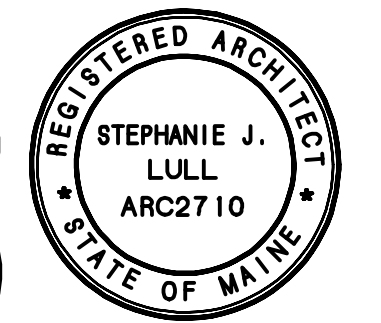


GRAPHIC SCALE
0' 5' 10'

FIRST FLOOR PLAN
1/4" = 1'-0"



SECOND FLOOR PLAN
1/4" = 1'-0"



Reviewed for Code Compliance
Permitting and Inspections Department
Approved with Conditions
01/31/2019

CASCO BAY ELECTRIC OFFICE
316 PRESUMPSCOT STREET
PORTLAND, MAINE

AMENDMENT 1/15/19



93 Pitt Street
Portland, ME 04103
207.747-5975 voice

822 Grover Hill Rd.
Bethel, ME 04217
207.824.7237 voice/fax
info@smithreuter.com

FIRST FLOOR PLAN

291-1
08/3/18
A1