

SYMBOL	SIZE (L x Th x W)	REINF. REQ'D	COMMENTS
F4	4'-0" x 1'-0" x 4'-0"	6 - #4 E.W.	BOTTOM REINF.
F5	5'-0" x 1'-0" x 5'-0"	7 - #4 E.W.	BOTTOM REINF.
F6.5	5'-6" x 1'-0" x 5'-6"	8 - #4 E.W.	TOP & BOTTOM REINF.
F6	6'-0" x 1'-0" x 6'-0"	8 - #4 E.W.	TOP & BOTTOM REINF.
F6.5	6'-6" x 1'-1" x 6'-6"	7 - #5 E.W.	BOTTOM REINF.
F10	10'-0" x 1'-7" x 10'-0"	8 - #7 E.W.	TOP & BOTTOM REINF.

FOOTING SCHEDULE

SCALE: 1/8"=1'-0"
 NOTES:
 1. REFER TO ARCHITECTURAL, MECHANICAL, AND ELECTRICAL PLANS FOR WALL AND SLAB BONDOUTS
 2. REFER TO SITE/CIVIL AND ARCH'L DRAWINGS FOR ALL PIPE BOLLARDS REQ'D.

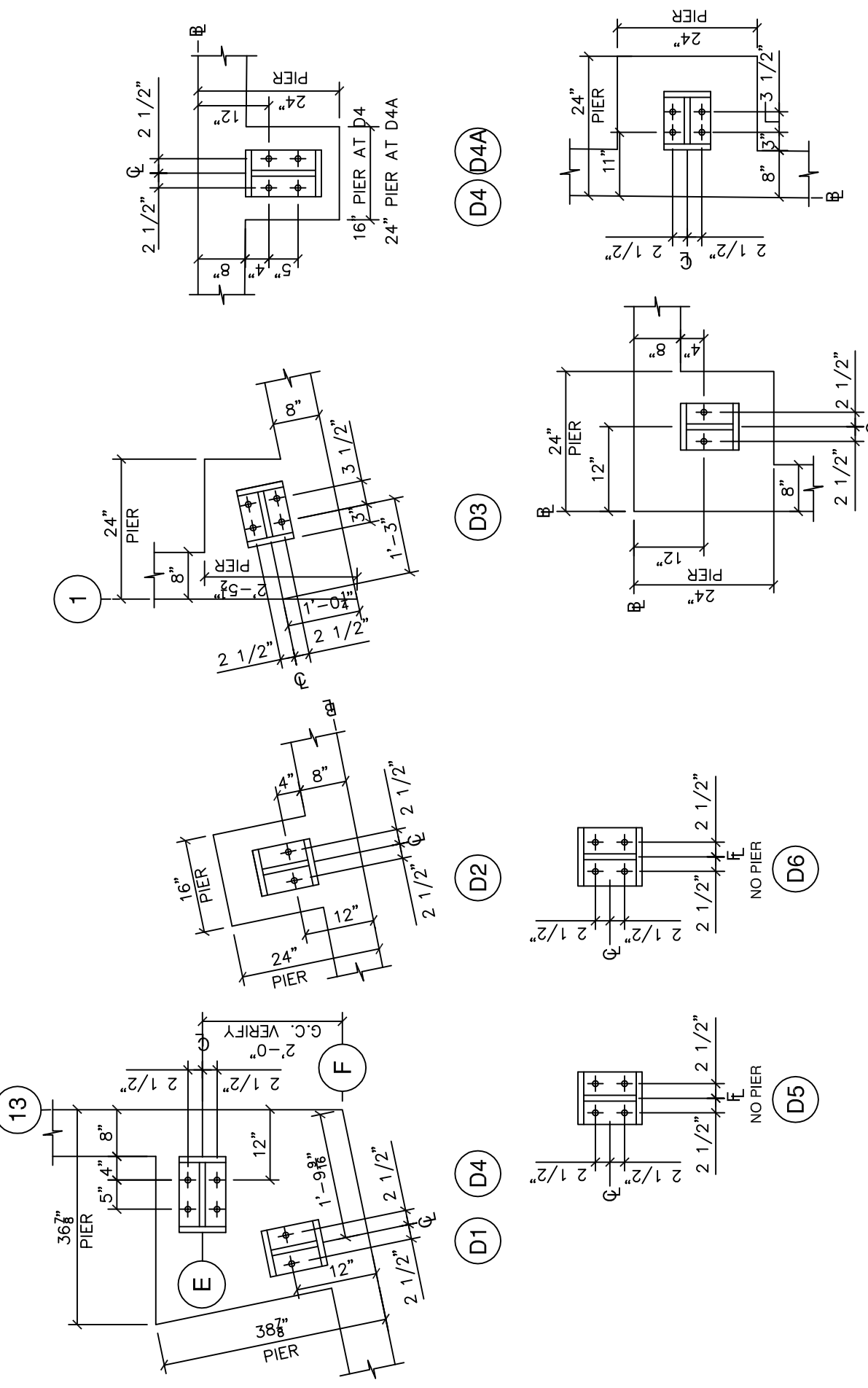
FOUNDATION PLAN

SCALE: 1/8"=1'-0"
 NOTES:
 1. REFER TO ARCHITECTURAL, MECHANICAL, AND ELECTRICAL PLANS FOR WALL AND SLAB BONDOUTS
 2. REFER TO SITE/CIVIL AND ARCH'L DRAWINGS FOR ALL PIPE BOLLARDS REQ'D.

TYPICAL ALL AREAS:
 CONCRETE SHALL BE DESIGNED TO BE REDESIGNED BY OTHERS PER CONTRACTOR. (SLAB THICKNESS & REINF. PER CONTRACTOR.)
 SLAB CONTROL CONSTRUCTION, AND ISOLATION JOINTS TO BE DESIGNED BY OTHERS
 SUBGRADE PREPARATION, SUB-SLAB STRUCTURAL FILL REQUIREMENTS TO BE DESIGNED BY OTHERS
 REF. F.F.E. = 100.0 FT

CONTRACTOR NOTE:
 CONTRACTOR TO CONFIRM PIER SIZE/LOCATIONS, AND TOP OF CONCRETE ELEVATIONS WITH FINAL "VARCO PRUDEN" (VP) BUILDING PLANS.

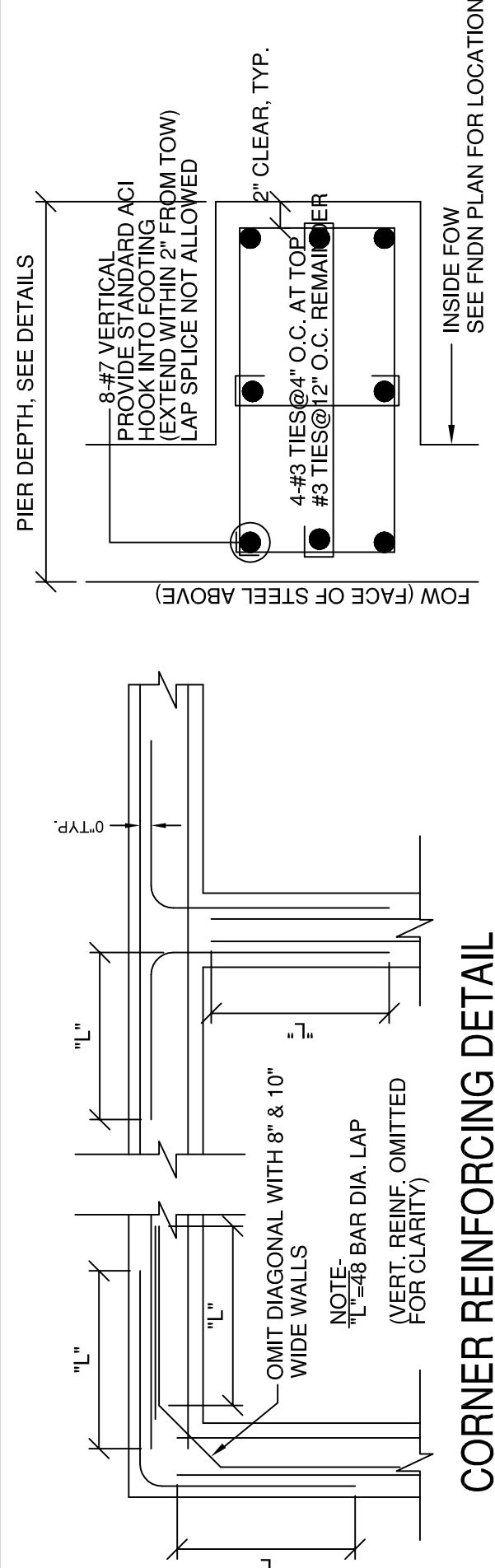
****CONTRACTOR NOTE:**
 ALL COLUMN PIERS ARE DESIGNED FOR HORIZONTAL LOADS. AS A RESULT, INDICATORS FROM BOTTOM OF COLUMN TO TOP OF FOOTING ARE NOT ACCEPTABLE. CONTRACTOR SHALL VERIFY SO ALL FOUNDATIONS CAN BE REDESIGNED SHOULD ELEVATION BOTTOM OF FOOTING(S) NEED TO BE LOWER.



DIAMETER	SHAPE	LOCATION
3/4" ASTM A307 (OR A307)	1.5" EMBEDDED PROJECTION	SEE PIER DETAILS

ANCHOR BOLT NOTES:
 1. CONTRACTOR TO CONFIRM ANCHOR ROD LAYOUT WITH METAL BUILDING MANUF. PRIOR TO SETTING ANCHOR BOLTS.
 2. ANCHOR RODS TO MEET ASTM F1554 SPECIFICATION.
 3. EMBEDMENT SHOWN IS MIN. TO TOP OF NUT.
 4. SEE "RS" PLANS FOR 1/2" DIA. BOLT RODS AT FRAMED OPENINGS.

PIER DETAILS
 N.T.S.
 (ALL ANCHOR RODS TO BE 3/4" DIAMETER, UNLESS NOTED OTHERWISE)



CORNER REINFORCING DETAIL
 N.T.S.

LAP SPACING OF VERTICAL REINFORCING IS NOT ALLOWED.
 SEE PIER DETAILS FOR DIMENSIONS (SIMILAR AT CORNER PIER LOCATIONS)

TYPICAL PLAN VIEW OF PIER REINF.
 N.T.S.

ISSUED FOR CONSTRUCTION

FOUNDATION NOTES:

- DESIGN MAXIMUM ASSUMED SOIL BEARING PRESSURE=2,000 PSF. TO BE VERIFIED BY THE PROJECT GEOTECHNICAL ENGINEER.
- CONCRETE: WALLS & FOOTINGS: F=5,000 P.S.I., 3/4" AGGREGATE, MAX. W/C=0.50, TYPE I OR II CEMENT, SLUMP MIN. 1", MAX. 4". INTERIOR SLABS: PER PATCO CONSTRUCTION, NOT BY SRG.
- EXTERIOR SLABS: F=4,500 P.S.I., 3/4" AGGREGATE, MAX. W/C=0.40, 4%-6% TOTAL AIR, TYPE I OR II CEMENT, SLUMP MIN. 1", MAX. 3". (USE A MID-RANGE WATER REDUCER IF MORE WORKABILITY IS DESIRED.)
- CONCRETE SUPPLIER IS TO SUBMIT MIX DESIGNS TO ENGINEER OF RECORD FOR EACH TYPE OF CONCRETE TO BE USED.
- REINFORCING TO BE GRADE 60, NEW DEFORMED BARS.
- ALL FOUNDATION WALLS ARE 8" WIDE, UNLESS NOTED OTHERWISE ON PLANS.
- UNLESS NOTED ON PIER DETAILS, ALL ANCHOR RODS ARE 3/4" DIA. ASTM F1554 A38 THREADED ROD WITH NUT EACH END, SEE DETAILS.
- G.C. TO VERIFY AND COORDINATE ALL LOCATIONS OF OVERHEAD DOORS (OHD), PEOPLE DOORS, AND LOADING DOCKS.
- REF. ELEV. TOP OF FOUNDATION WALL = 100.0 FT. TYP. UNLESS NOTED OTHERWISE THUS "TOW".
- REF. ELEV. TOP OF PIER = 100.0 FT. TYP. UNLESS NOTED OTHERWISE THUS "TOP".
- REFERENCE BOTTOM OF WALL FOOTING ELEVATION = 95.17 FT. TYPICAL U.N.O. THUS "BOF"
- *ALL EXTERIOR FOOTINGS SHALL EXTEND 4'-6" BELOW FINISH GRADE (SEE NOTE THIS SHEET).
- ALL FOOTINGS TO BE CENTERED BELOW COLUMN BASE ABOVE.
- SEE "VP" PLANS FOR ANCHOR ROD LOCATION, ORIENTATION, AND SIZE.
- REFER TO PROJECT GEOTECHNICAL ENGINEERING REPORT FOR ALL FOUNDATION, DRAINAGE, COMPACTION, BACKFILL, AND SUB-GRADE PREPARATION REQUIREMENTS.
- G.C. TO DETERMINE SLAB PITCH REQUIREMENTS AND FIELD COORDINATE.
- ALL STRUCTURAL FILL TO BE COMPACTED TO A MINIMUM OF 95% AS DETERMINED BY ASTM D-1557.
- UNLESS SPECIFIED DIFFERENTLY BY PROJECT GEOTECHNICAL ENGINEER.
- CONTRACTOR TO COMPLY WITH LATEST PROVISIONS OF ACI 305 AND ACI 308 FOR HOT AND COLD WEATHER CONCRETING.
- CONTRACTOR TO COMPLY WITH LATEST PROVISIONS OF ACI 304 FOR CONCRETE PLACEMENT.
- CONTRACTOR TO SUBMIT DETAILED REINFORCING SHOP DRAWINGS TO SRG FOR REVIEW PRIOR TO CONSTRUCTION. NO EXCEPTION.
- CALCIUM CHLORIDE IS NOT ALLOWED IN ANY CONCRETE AND WILL BE REJECTED IF IT IS ALLOWED IN CONCRETE MIX.
- EACH CONCRETE TRUCK TO PROVIDE BATCH TICKET TO MATERIALS TESTING AGENCY BEFORE PLACEMENT. NO EXCEPTIONS.
- PROVIDE SUPPORTS FOR REINFORCEMENT INCLUDING BOLSTERS, CHAIRS, SPACERS, AND OTHER DEVICES FOR SPACING.
- CONCRETE SHALL BE PLACED AND FINISHED IN ACCORDANCE WITH THE REQUIREMENTS OF THE "WET STICKING" OF FINISH REINFORCING IS NOT ALLOWED (EXCEPT FOR CMU STRAIGHT BAR DOWELS) AND WILL BE REJECTED.

REV.	DATE	STATUS

SRG ENGINEERING, INC.
 CONSULTING STRUCTURAL ENGINEERS
 P.O. BOX 295
 GRAY, ME 04039
 PORTLAND, MAINE
 SANFORD, MAINE
 PATCO CONSTRUCTION

PROJECT NO. EOR
 TEL: (207) 652-7323
 FAX: (207) 652-7342
 EMAIL: SRG@SRGENG.COM

REV: 06-062 SRC
 06-062 SRC
 DESIGN SRC
 CHKD SRC
 DRAWN SRC