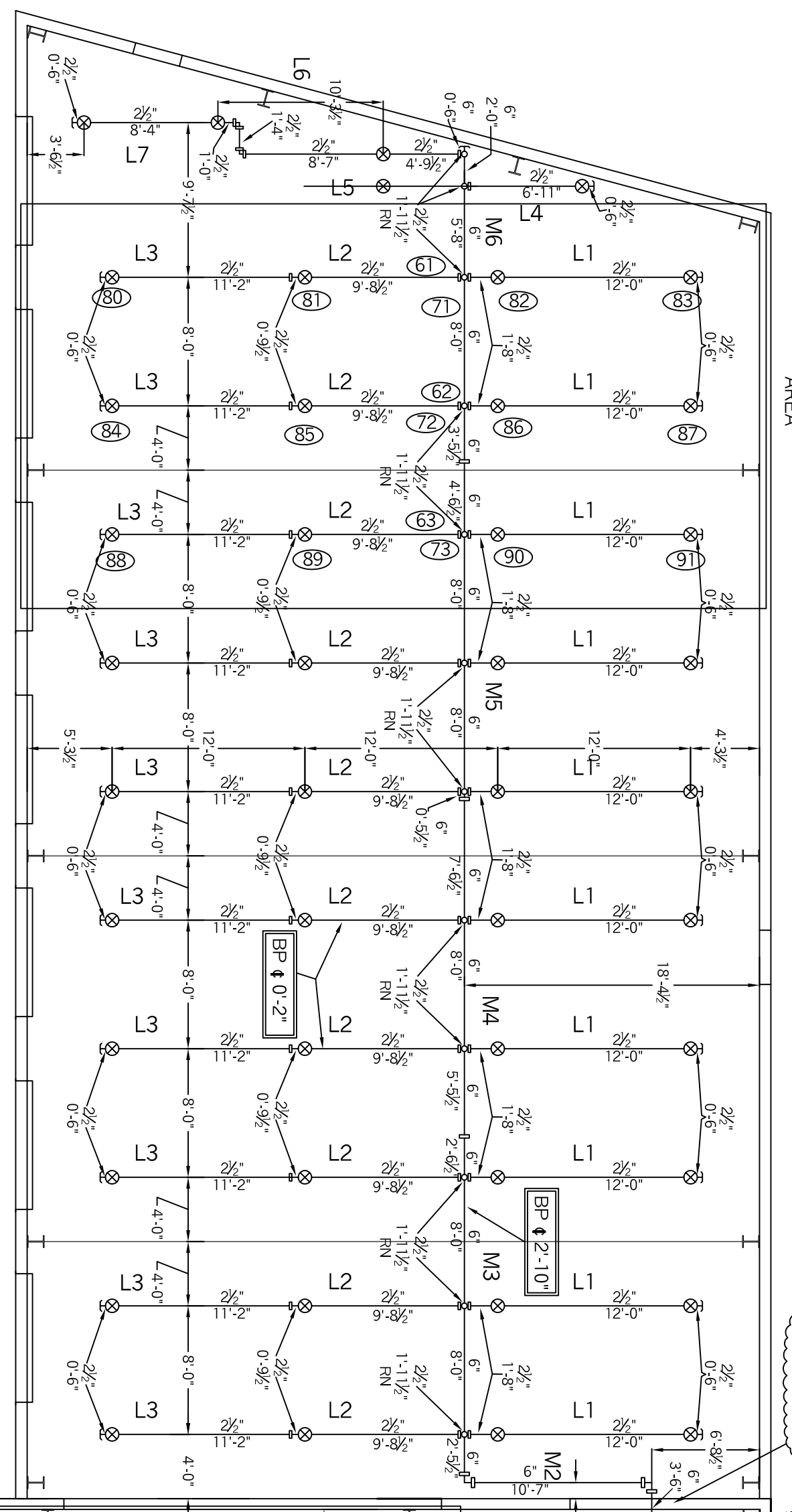


RELOCATE
AREA
4,056 SQ. FT.

ADDITION
4,056 SQ. FT.

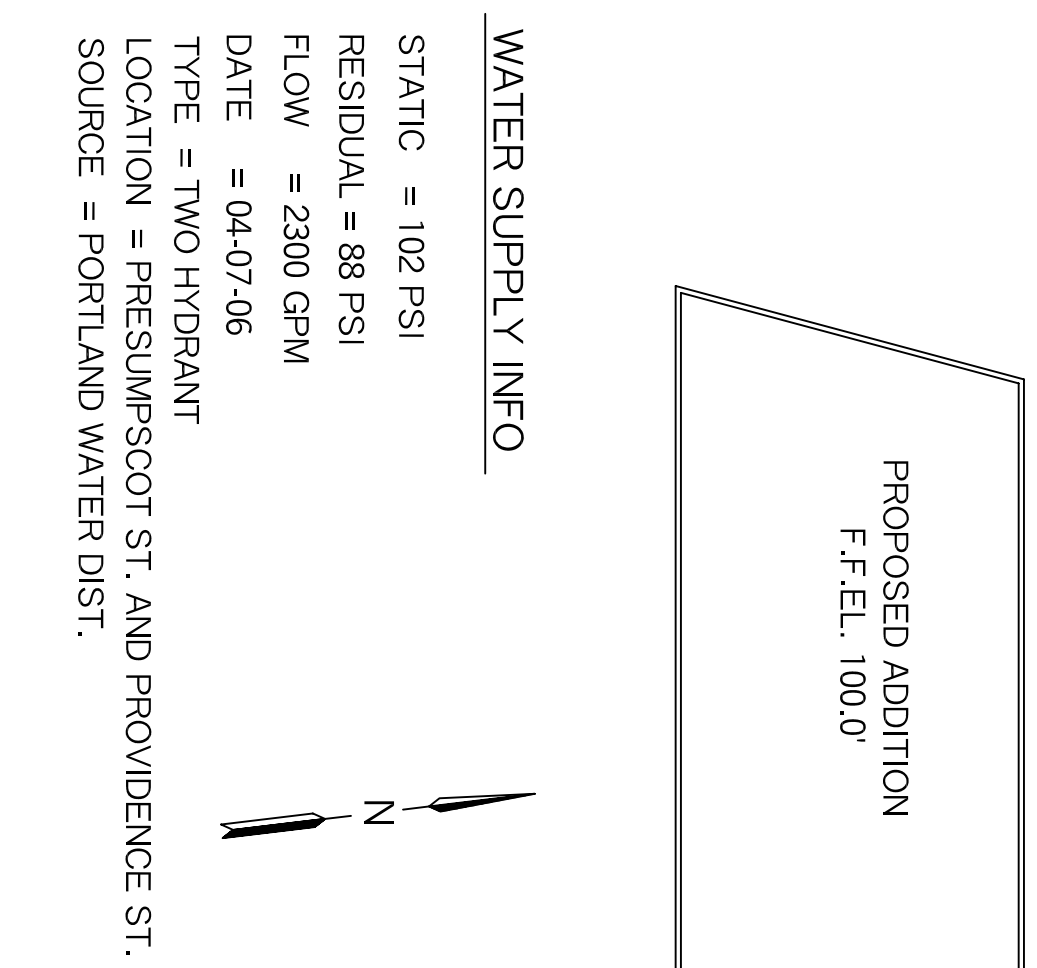
EXISTING BUILDING

PLAN NORTH



HYDRAULIC DATA:
BASIS OF DESIGN (NFPA 13)
DENSITY AREA OF COVERAGE
12 HEADS
TOTAL THREAD TEMP
SPRINKLERS 12 1/2" 155
SYSTEM DEMAND AT BASE OF RISER:
PIPE SIZE HEAD NO.
30.55 1400 250
SAFETY MARGIN: 15.13%
OCCUPANCY: WAREHOUSE

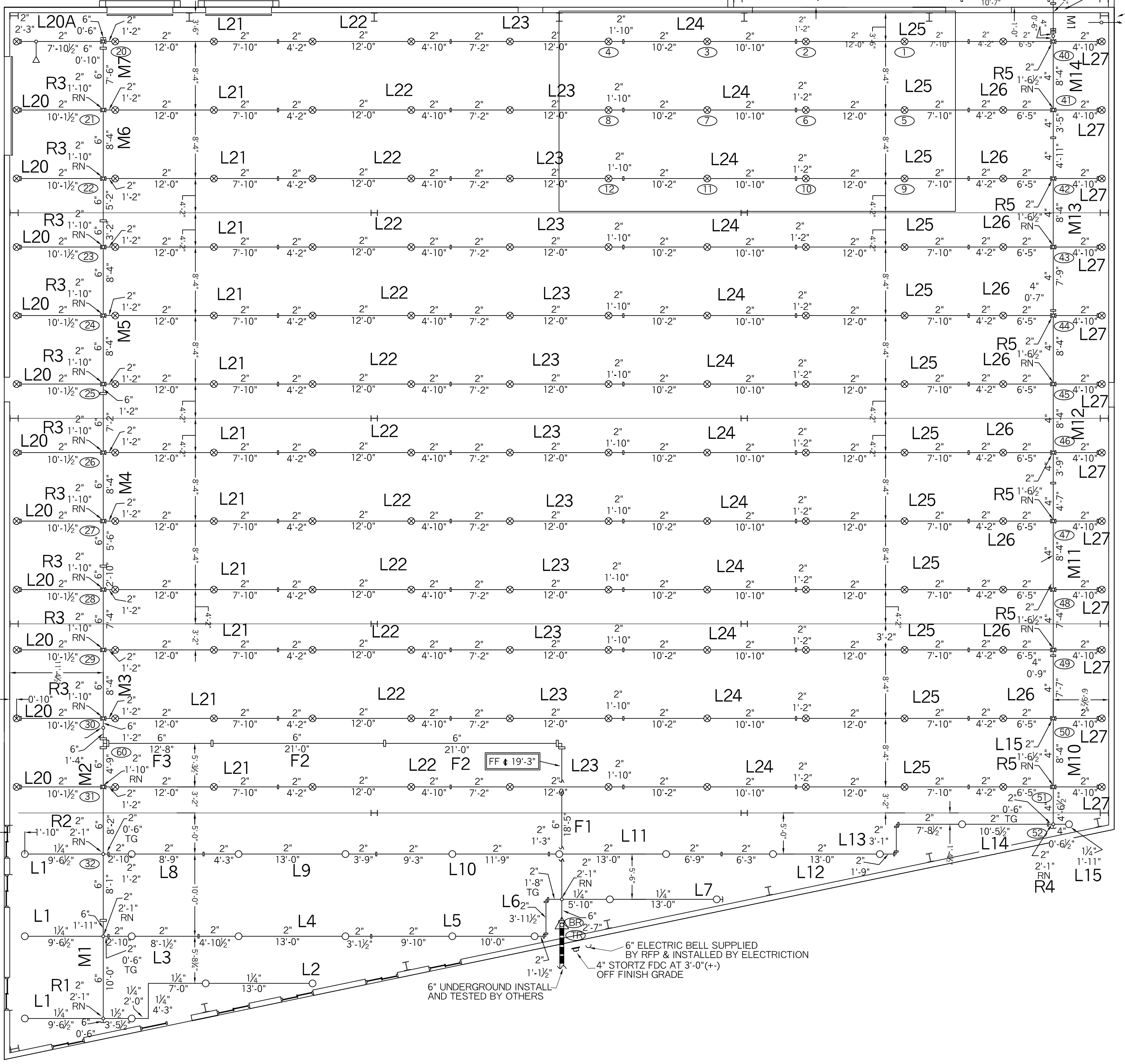
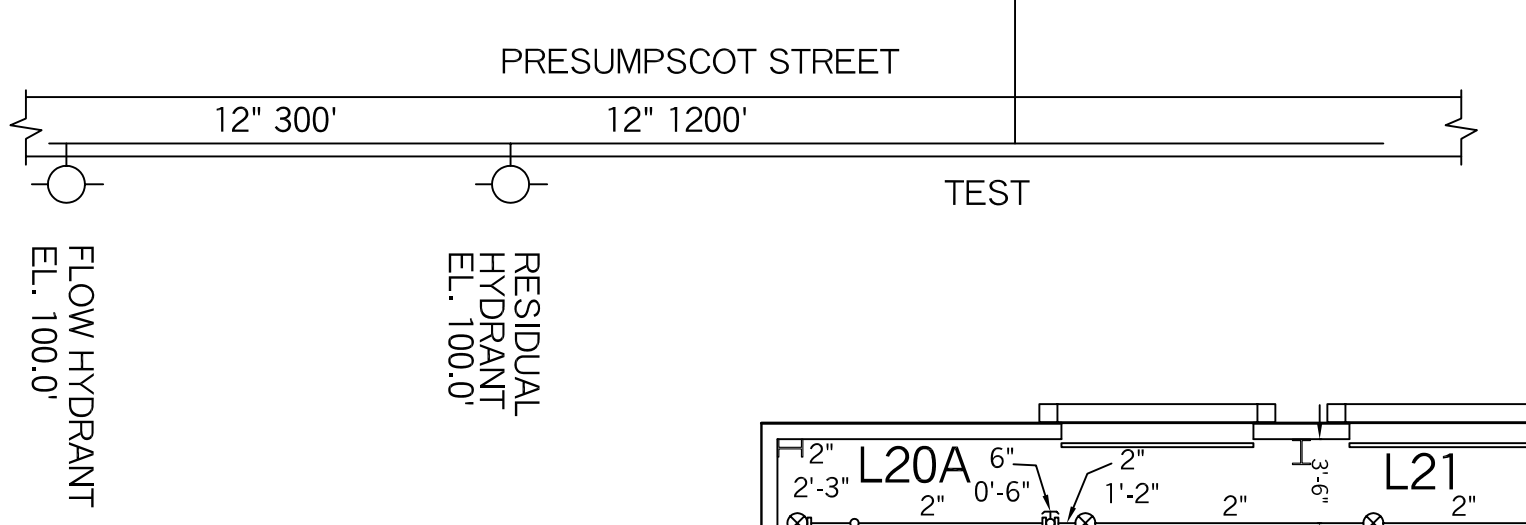
OVERHEAD DOORS
UP, NO SIDEWALLS
NECESSARY



WATER SUPPLY INFO

STATIC = 102 PSI
RESIDUAL = 88 PSI
FLOW = 2300 GPM
DATE = 04.07.06
TYPE = TWO HYDRANT
LOCATION = PRESUMPSCOT ST. AND PROVIDENCE ST.
SOURCE = PORTLAND WATER DIST.

PLOT PLAN
NOT TO SCALE



RELOCATE
1.14' LOW POINT DRAIN
OUT TO FITTING
IN FROM 6'-9"

EXISTING BUILDING

LEGEND

- ▷ 155F OR 1/2" WHITE SIDEWALL
- 155F 1/2 BRASS PENDENT
- 155F 1/2 BRASS UPRIGHT
- ⊗ 155F QR 1/2" WHITE RECESSED PENDENT
- 200F OR 1/2" BRASS UPRIGHT
- HANGER
- RISE OR DROP NIPPLE
- VICTAULIC COUPLING

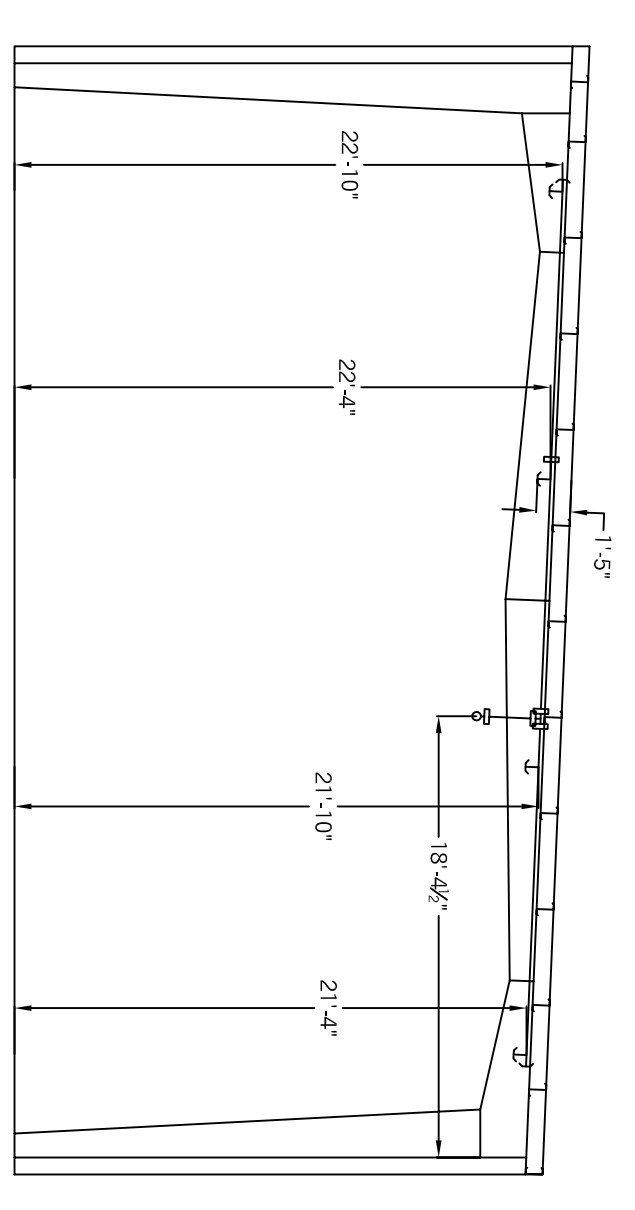
- FF K=XX FIN FLR TO CENTERLINE OF PIPE
- C K=XX CEILING TO CENTERLINE OF PIPE
- TU K=TOP OF JOIST TO CENTERLINE OF PIPE
- BU K=BOTTOM OF JOIST TO CENTERLINE OF PIPE
- BB K=BOTTOM OF BEAM TO CENTERLINE OF PIPE
- ELEV K=CIVIL ELEVATION OF CENTERLINE OF PIPE

GENERAL NOTES
ALL DIMENSIONS ARE CENTER TO CENTER U/N
ALL THREADED PIPE TO BE SCH. 40 BLACK STEEL
ALL SCREWED FITTINGS TO BE STD. WT. CL. BLACK U/N
ALL GROOVED PIPE TO BE SCH. 10 BLACK STEEL

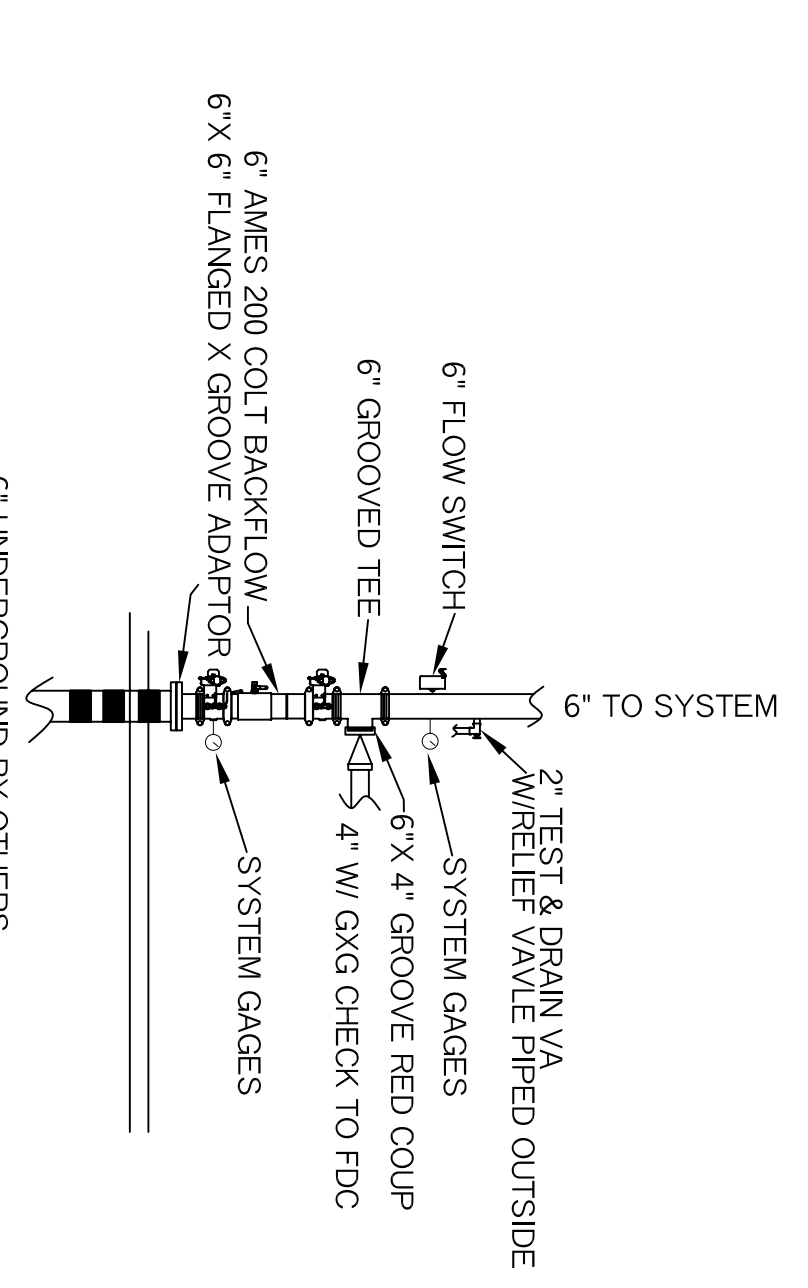
DESIGN CRITERIA FOR ADDITION ESFR SYSTEM

SPRINKLER DESIGN CRITERIA PER NFPA #13-2010 EDITION, TABLE 16.2.3.1, CLASS 1 THROUGH 4, SINGLE ROW, DOUBLE ROW AND MULTIPLE ROW RACK STORAGE (NO OPEN TOP CONTAINERS), NON-RESPULSANT OR ENCAPSULATED, NO SOLID SHELVEYS, STORED HEIGHT OF 20 FEET, AND CEILING HEIGHT OF 25 FEET. A MAXIMUM STORAGE CALCULATING THE HYDRAULIC MOST REMOTE 12 HEADS @ 15 PSI EHP PLUS 250 GPM HOSE DEMAND. THE MAXIMUM SPACING BETWEEN THE ESFR K25.2 SPRINKLERS TO BE 100 SQ.FT. COMMODITIES ARE CARBONBOND AND PLASTIC ON CONVENTIONAL PALLETS

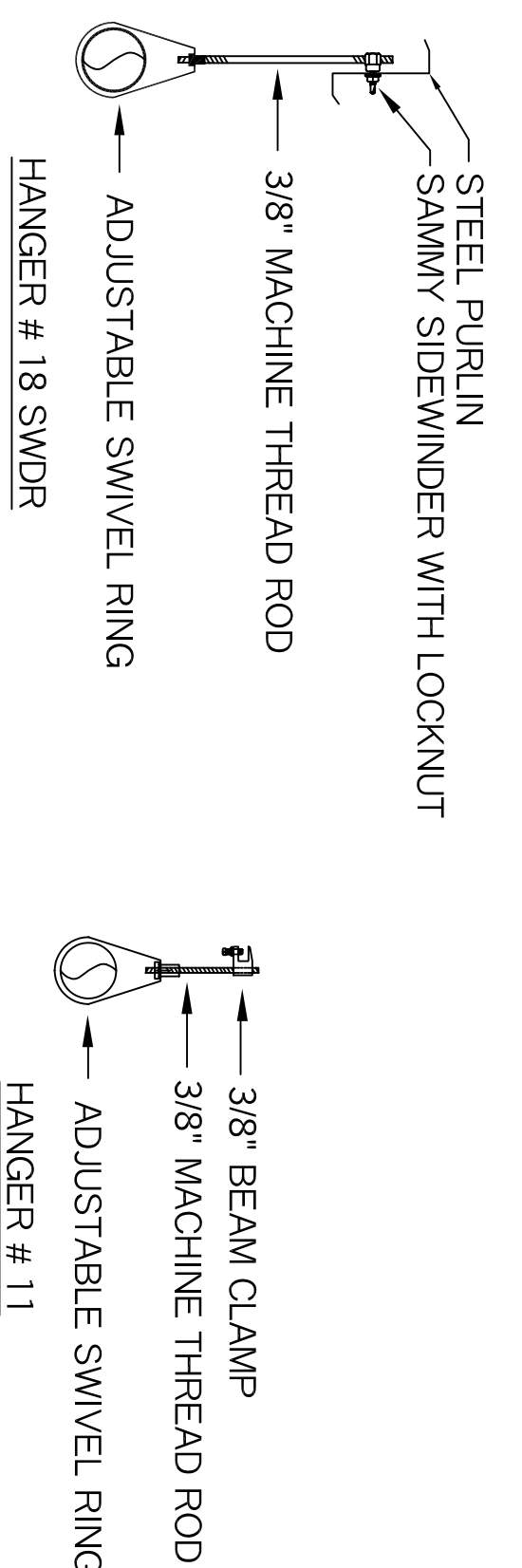
- = INDICATES HYDRAULIC REFERENCE POINTS.
- DN INDICATES VERTICAL PIPE DOWN
- FN INDICATES VERTICAL PIPE TO CENTERLINE OF PIPE
- BP INDICATES BOTTOM PURIN TO CENTERLINE OF PIPE
- C INDICATES BOTTOM PURIN TO CENTERLINE OF PIPE



ADDITION CROSS SECTION



EXISTING RISER DETAIL
NOT TO SCALE



HANGER DETAILS
NOT TO SCALE

ALL HANGERS TO BE PROVIDED AND INSTALLED AS PER NFPA # 13
3/8" ROD FOR 1" TO 4" PIPE
NOTE: BEAM CLAMP TO BE ATTACHED TO ANGLE OF STEEL JOIST AND/OR BEAM FLANGES

44 KING WKS10
165F ESFR OR BRASS PENDENT
1" K=25.2

SYSTEM DESIGN

A EXTENSION OF A WET PIPE SYSTEM OF AUTOMATIC SPRINKLERS TO BE DESIGNED AND INSTALLED PER NFPA 13. HAZARD IS ORDINARY GRP II
ALL SPRINKLERS FOR ADDITION TO BE EARLY SUPPRESSION FAST RESPONSE SPRINKLERS

REVISION NUMBER	DATE	SUBMITTED BY	DATE	DATE	SCALE	NO. OF SHEETS	NO. OF SHEETS
1	04.07.2011	STANLEY A. CAMM	04.07.2011	04.07.2011	1/8" = 1'-0" U/N	44	44
2	07.23.11	NICET III - #78085	07.23.11	07.23.11	1/8" = 1'-0" U/N	44	44
3	07.23.11		07.23.11	07.23.11	1/8" = 1'-0" U/N	44	44

PACK EDGE ADDITION
340 PRESUMPSCOTT ST
PORTLAND, MAINE
C13020

RESIDENTIAL FIRE
PHONE: (207) 946-3473 FAX: (207) 946-3474
64 DAGGETT HILL ROAD
PROTECTION, LLC
GREENE, MAINE 04236