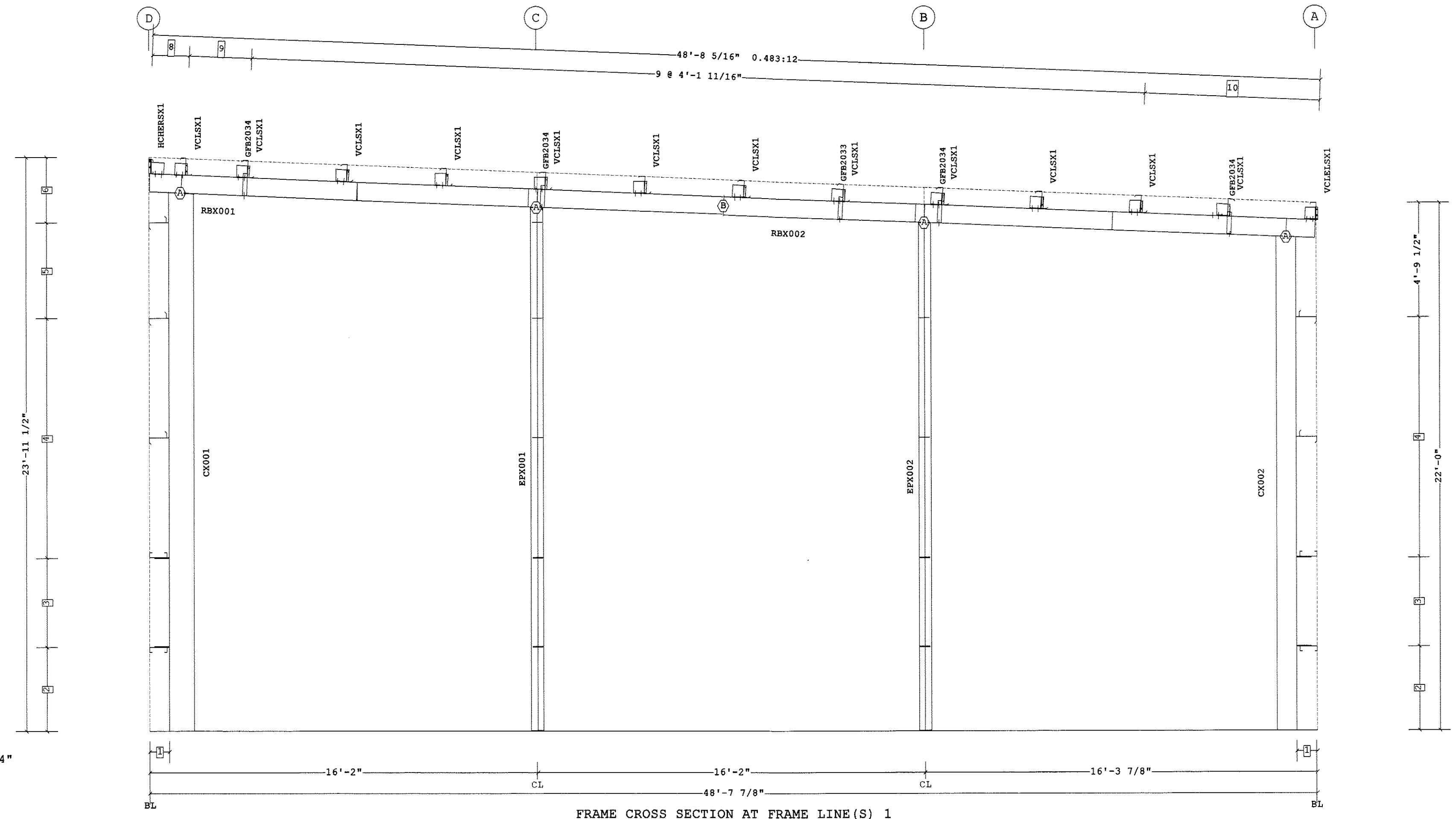


Frame Member Schedule									
Part	Mem	Width	Thick	WebThk.	Depth1	Depth2	Approx.Lgth	Approx.Weight	Detail
CX001	1	6.0000	.2500	.1345	1'-0"	1'-0"	22'-5 1/2"	380#	
RBX001	2	5.0000	.1345	.1345	9"	9"	23'-11 9/16"	217#	
	3	5.0000	.1345	.1345	9"	9"			
	4	5.0000	.1345	.1345	9"	9"			
RBX002	5	5.0000	.1345	.1345	9"	9"	24'-8 5/16"	223#	
	6	5.0000	.1345	.1345	9"	9"			
	7	5.0000	.1345	.1345	9"	9"			
CX002	8	6.0000	.2500	.1345	10"	10"	20'-7 3/16"	328#	
EPX001	9	6.0000	.2500	.1345	9"	9"	21'-10 1/4"	245#	BR25A3
EPX002	10	6.0000	.2500	.1345	9"	9"	21'-2 7/16"	237#	BR25CA

Bolt Connection & Plate Schedule									
Id	Qty	Grade	Bolt	Bolt	Plate	Rows	Rows	PartNo	
			Dia.	Length	Thick.	Out	In		
A	4	A325	1/2"	1 1/2"	3/8"	1	1	49080	
B	6	A325	1/2"	1 1/2"	1/4"	1	2	49080	

Frame Clearances
 Horiz. Clearance between members 1(CX001) and 8(CX002): 45'-1 7/8"
 Vert. Clearance at member 1(CX001): 22'-5 1/16"
 Vert. Clearance at member 8(CX002): 20'-7 1/4"
 Vert. Clearance at member 9(EPX001): 21'-10 1/8"
 Vert. Clearance at member 10(EPX002): 21'-2 5/16"
 Finished Floor Elevation = 100'-0" (Unless Noted Otherwise)



10	2 @ 3'-7 3/4"
9	2'-7 1/16"
8	1'-6 5/8"
7	0'-0"
6	2'-9"
5	4'-0"
4	2 @ 5'-0"
3	3'-8 1/2"
2	3'-6"
1	10"

Dimension Key

FRAME CROSS SECTION AT FRAME LINE(S) 1

Shape Name = Pack Edge Wall 4, Frame 1

1. USE 1/2 X 1 1/2 A325 SNUG TIGHTENED BOLTS FOR ALL SECONDARY CONNECTIONS, SECONDARY CLIP CONNECTIONS, AND FLANGE BRACE CONNECTIONS, UNLESS NOTED OTHERWISE.
 2. SLOT REINFORCEMENT PLATES NEED NOT BE LOCATED ON THE SAME SIDE OF THE WEB AS THE HILLSIDE WASHER.

THE VP ENGINEER'S SEAL APPLIES ONLY TO THE WORK PRODUCT OF VP AND DESIGN AND PERFORMANCE REQUIREMENTS SPECIFIED BY VP. THE VP ENGINEER'S SEAL DOES NOT APPLY TO THE PERFORMANCE OR DESIGN OF ANY OTHER PRODUCT OR COMPONENT FURNISHED BY VP EXCEPT TO ANY DESIGN OR PERFORMANCE REQUIREMENTS SPECIFIED BY VP.

THIS DRAWING, INCLUDING THE INFORMATION HEREON, REMAINS THE PROPERTY OF VP BUILDINGS. IT IS PROVIDED SOLELY FOR ERECTING THE BUILDING DESCRIBED IN THE APPLICABLE PURCHASE ORDER AND SHALL NOT BE MODIFIED, REPRODUCED OR USED FOR ANY OTHER PURPOSE WITHOUT PRIOR WRITTEN APPROVAL OF VP BUILDINGS.
 THE GENERAL CONTRACTOR AND/OR ERECTOR IS SOLELY RESPONSIBLE FOR ACCURATE GOOD QUALITY WORKMANSHIP IN ERECTING THIS BUILDING IN ACCORDANCE WITH THIS DRAWING, DETAILS REFERENCED IN THIS DRAWING, ALL APPLICABLE VP BUILDINGS ERECTION GUIDES, AND INDUSTRY STANDARDS PERTAINING TO PROPER ERECTION, INCLUDING THE CORRECT USE OF TEMPORARY BRACING.

VP Buildings			
3200 Players Club Circle Memphis TN 38125			
REV	DATE	BY	DESCRIPTION
NTS			

FRAME CROSS SECTION AT FRAME LINE(S) 1			
BUILDER	Patco	JOB #	12-4084
CUSTOMER		DATE	3/14/2013
LOCATION	Portland, Maine	DRAWN/CHECK	COOP DC
PROJECT	Pack Edge	PAGE	6
BUILDERS PO#		A BlueScope Steel Company VPC VERSION: 2012.3d	
FILENAME: Pack Edge addition BO		a division of BlueScope Buildings North America, Inc.	