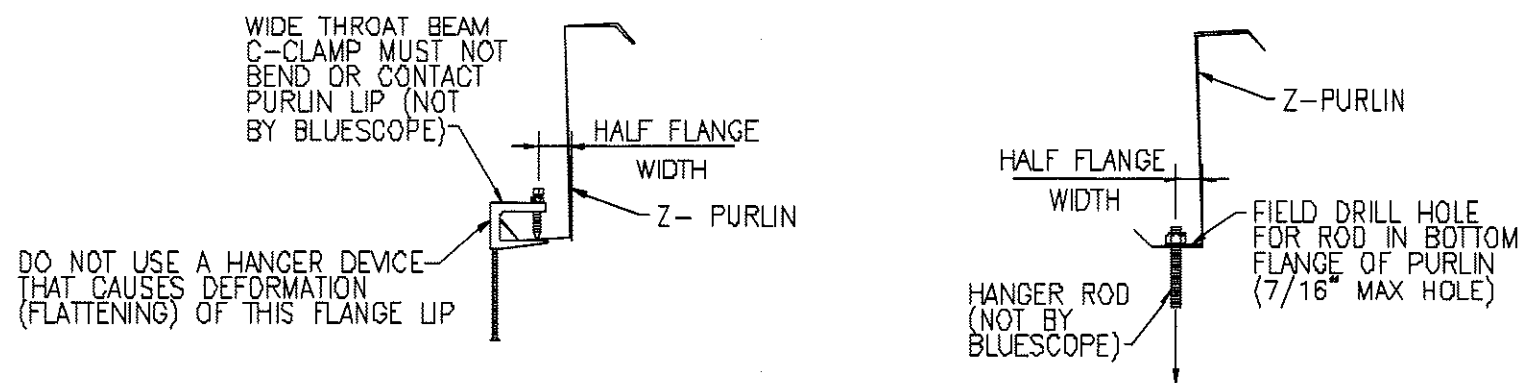


WEB HANGERS

FOR 1/2" DIAM. BOLT TO PURLIN CONNECTION-- MAX HANGER LOAD=1500lbs
PURLIN MUST BE SPECIFICLY DESIGNED FOR LOADS GREATER THAN 500 LB. SEE NOTE #2.



VERIFY OVERALL PURLIN DESIGN CAN TAKE APPLIED LOADS. SEE NOTE #2

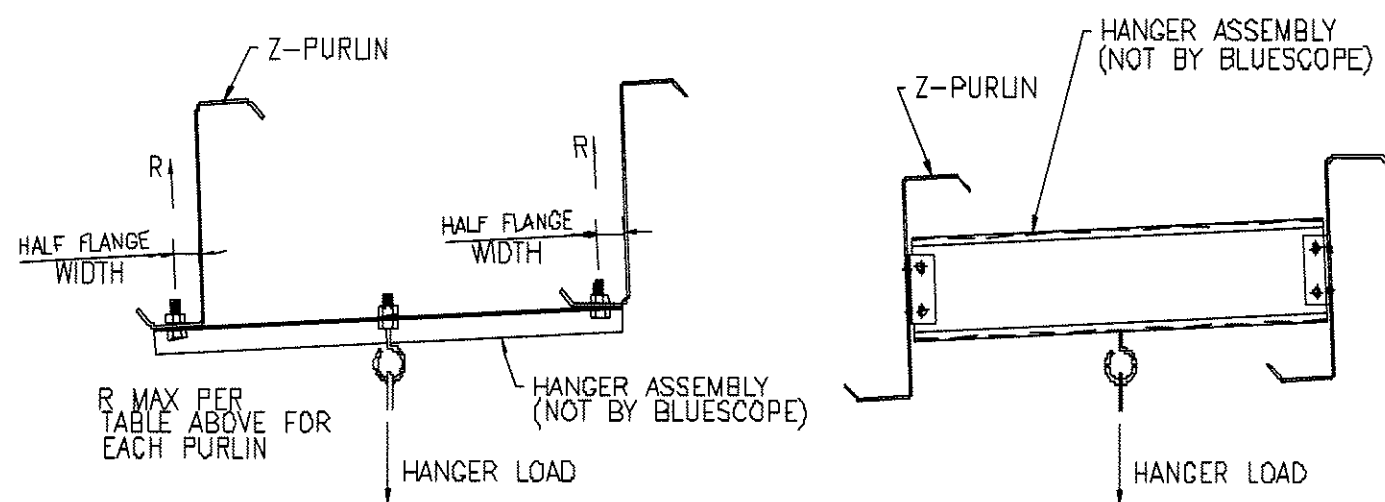
MAXIMUM LOAD SUSPENDED FROM BOTTOM FLANGE (LOCATED AT HALF-FLANGE WIDTH)			
THICKNESS	MAX LOAD	THICKNESS	MAX LOAD
0.060"	110lbs	0.088"	200lbs
0.068"	120lbs	0.098"	250lbs
0.073"	140lbs	0.113"	250lbs
0.079"	180lbs		

FOR LOADS LOCATED MORE THAN HALF FLANGE WIDTH
FROM WEB, USE HALF OF THE LOADS SHOWN ABOVE.

**BOTTOM FLANGE CLAMP HANGER
(TOP FLANGE SIMILAR)**

**BOTTOM FLANGE ROD HANGER
(TOP FLANGE SIMILAR)**

DO NOT USE ANY OF THE DETAILS ABOVE IF ROOF SLOPE IS GREATER THAN 4:12

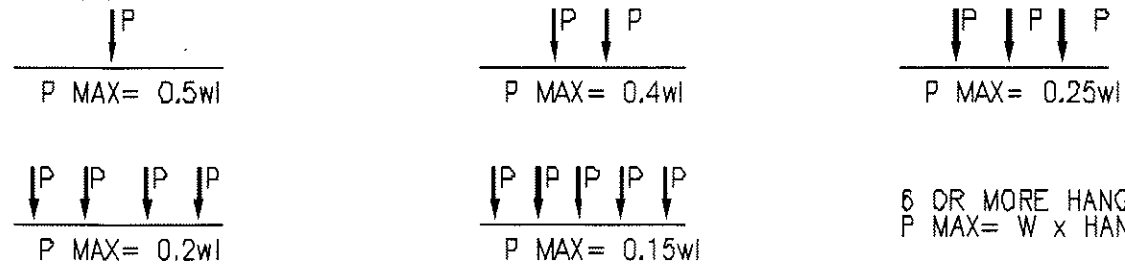


DOUBLE PURLIN HANGERS

VERIFY OVERALL PURLIN DESIGN CAN SUPPORT APPLIED LOADS.

GENERAL NOTES

1. CONCENTRATED LOADS GREATER THAN 500lbs ON ANY SINGLE PURLIN MUST BE EXPLICITLY LOCATED AND DESIGNED FOR DURING DESIGN OF BUILDING SYSTEM.
2. SPECIFIED COLLATERAL LOADS MAY BE CONVERTED TO SAFE CONCENTRATED LOADS AS FOLLOWS, WHERE P = MAX CONCENTRATED LOAD(lbs); W = UNIFORM COLLATERAL LOAD (PSF) x PURLIN SPACING (ft) = lbs/ft; L = PURLIN SPAN (ft). HANGERS SHOULD BE SPACED APPROX. EQUAL.



EXAMPLE: A PIPE IS SUSPENDED FROM A PURLIN AT 3 LOCATIONS EQUALLY SPACED
BAY SPACING = 24'-0" PURLIN SPACING = 5'-0"
SPECIFIED COLLATERAL LOAD = 5 PSF
W = 5 PSF x 5 FT = 25 PLF L = 24'-0"
P MAX = 0.25 x 25 PLF x 24'-0" = 150 LBS AT EACH LOCATION
THE PURLIN CAN SUPPORT 3 LOADS UP TO 150 LBS EACH. PICK A HANGER CONNECTION CAPABLE OF SUPPORTING ACTUAL APPLIED LOADS.

3. FOR LOADS GREATER THAN 250 lbs, PURLINS MUST BE "BLOCKED" AT LOCATION OF LOAD TO PREVENT PURLIN ROTATION.
4. EQUIPMENT LOADS SHOULD BE OBTAINED FROM CERTIFIED EQUIPMENT DRAWINGS AND MANUFACTURER'S DATA.
5. Z-PURLINS WILL DEFLECT UNDER SNOW AND WIND LOADS. ITEMS THAT MAY BE DAMAGED DUE TO DEFLECTIONS, (EX. GAS LINES), VERIFY THAT PIPES OR SUSPENDED EQUIPMENT ARE COMPATIBLE WITH EXPECTED DEFLECTION RANGES ($\pm L/180$).
6. THE NATIONAL FIRE PROTECTION ASSOCIATION (NFPA) REQUIRES SPRINKLER HANGERS TO BE DESIGNED FOR A MINIMUM LOAD OF FIVE TIMES THE WEIGHT OF THE WATER-FILLED PIPE PLUS 250 POUNDS. THE HANGER ITSELF MUST BE ABLE TO SUPPORT THIS LOADING. IT IS NOT NECESSARY TO DESIGN THE SUPPORTING MEMBER FOR THIS LOAD IN COMBINATION WITH THE DESIGN LOADS.
7. SUSPENDED LOADS WILL NEED TO BE BRACED (TO THE PRIMARY FORCE RESISTING SYSTEM) FOR LATERAL STABILITY DUE TO EARTHQUAKES.
8. HANGER DESIGN IS NOT THE RESPONSIBILITY OF BLUESCOPE.
9. TOP FLANGE HANGERS SHOULD BE AVOIDED ON BUILDINGS WITHOUT INSULATION SPACER BLOCKS ON TOP OF THE TOP FLANGE. IF TOP FLANGE HANGERS ARE REQUIRED, PLACE THE HANGERS AT THE ROOF PANEL MAJOR CORRUGATION LOCATION TO AVOID DAMAGING THE ROOF PANEL WITH THE HANGER WHEN THE ROOF PANEL IS LOADED OR WALKED ON.
10. WHEN BEAM C-CLAMPS OR OTHER ROD HANGERS ARE USED ON THE TOP FLANGE, THE ROD SHOULD NOT EXTEND ABOVE THE TOP OF THE CLAMP TO AVOID DAMAGING THE ROOF PANEL WITH THE ROD WHEN THE ROOF PANEL IS LOADED OR WALKED ON.
11. DO NOT HANG ANY TYPE OF CRANE, HOIST, CONVEYOR OR ANY MOVING LOADS FROM THE Z-PURLINS.
12. DO NOT HANG ANY LOAD FROM BBNA SUPPLIED PURLIN BRACES OR BRIDGING.
13. DO NOT WELD ANY PART OF THE Z-PURLIN.
14. HOLES MUST NOT EXCEED 9/16" DIAMETER UNLESS AUTHORIZED BY BBNA ENGINEER. DRILL OR REAM HOLES WHEN REQUIRED- DO NOT FLAME CUT

**CONCENTRATED LOADS ON ROOF
Z-PURLIN HANGER DETAILS**

DRAWN BY: REVERITT	CHECKED BY: RBENTON	GROUP NUMBER: 80-054-01
FIRST RELEASE DATE: 02/28/10	REVISION DATE:	B P-081465 05

THE VP ENGINEER'S SEAL APPLIES ONLY TO THE WORK PRODUCT OF VP AND DESIGN AND PERFORMANCE REQUIREMENTS SPECIFIED BY VP. THE VP ENGINEER'S SEAL DOES NOT APPLY TO THE PERFORMANCE OR DESIGN OF ANY OTHER PRODUCT OR COMPONENT FURNISHED BY VP EXCEPT TO ANY DESIGN OR PERFORMANCE REQUIREMENTS SPECIFIED BY VP.

THIS DRAWING, INCLUDING THE INFORMATION HEREON, REMAINS THE PROPERTY OF VP BUILDINGS. IT IS PROVIDED SOLELY FOR ERRECTING THE BUILDING DESCRIBED IN THE APPLICABLE PURCHASE ORDER AND SHALL NOT BE MODIFIED, REPRODUCED OR USED FOR ANY OTHER PURPOSE WITHOUT PRIOR WRITTEN APPROVAL OF VP BUILDINGS.

THE GENERAL CONTRACTOR AND/OR ERECTOR IS SOLELY RESPONSIBLE FOR ACCURATE GOOD QUALITY WORKMANSHIP IN ERRECTING THIS BUILDING IN ACCORDANCE WITH THIS DRAWING, DETAILS REFERENCED IN THIS DRAWING, ALL APPLICABLE VP BUILDINGS ERRECTION GUIDES, AND INDUSTRY STANDARDS PERTAINING TO PROPER ERRECTION, INCLUDING THE CORRECT USE OF TEMPORARY BRACING.

VP Buildings 3200 Players Club Circle Memphis TN 38125			
REV	DATE	BY	DESCRIPTION
NTS			

CUSTOM SED'S

BUILDER: Patco
CUSTOMER:
LOCATION: Portland, Maine
PROJECT: Pack Edge
BUILDERS POW:

JOB # 12-4084	DATE 3/14/2013	DRAWN/CHECK COOP DC	PAGE 25
---------------	----------------	---------------------	---------

