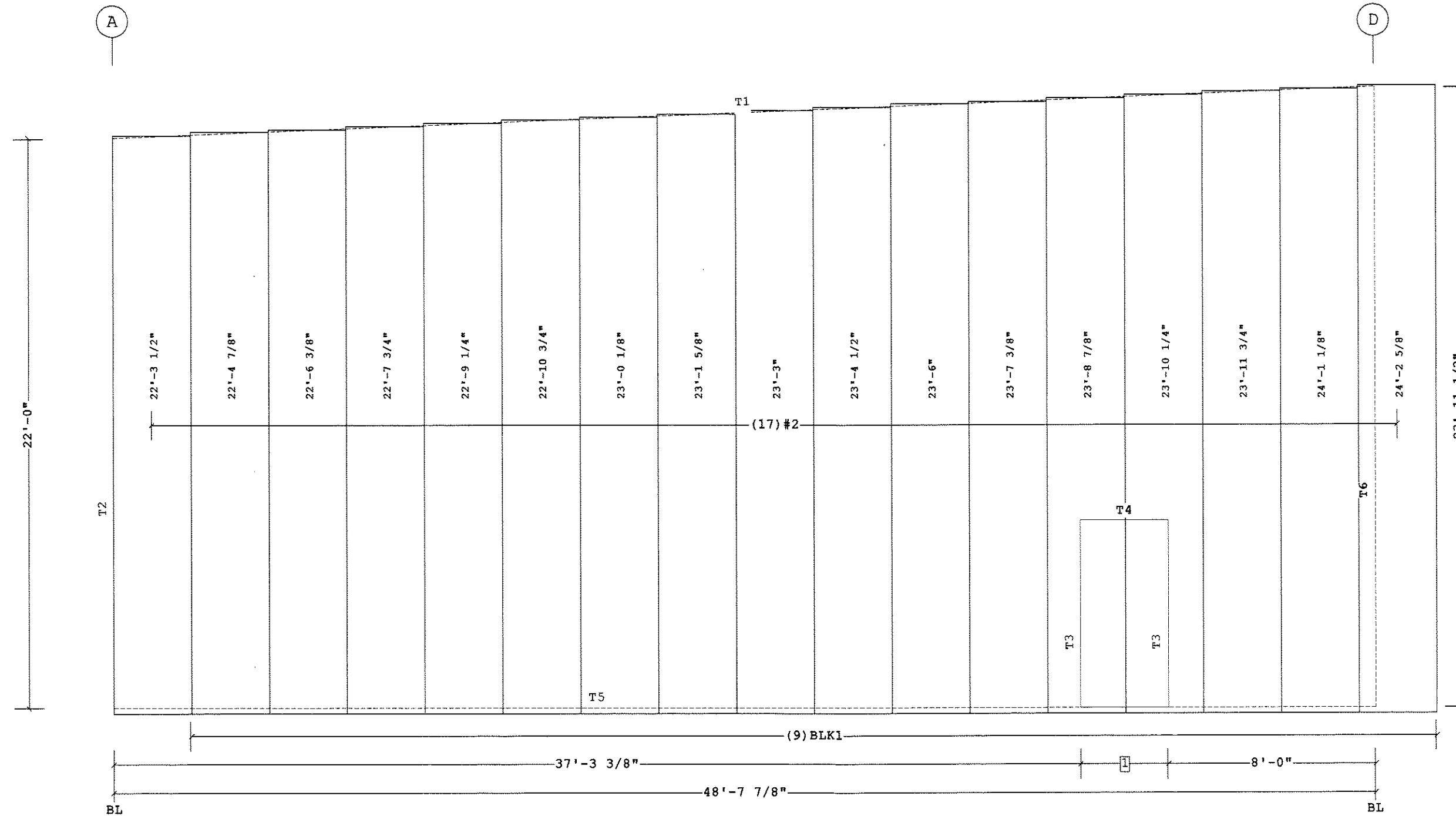


Covering Schedule
 Id Qty Type Start Length Gage OP Fin. Color Increment Direction
 #2 17 PR 22'-3 1/2" 26 F K GG 1 7/16" Left to Right
 Oper. Code:F=CR,SQ
 Finish:K=KXL (Kynar)
 Color:GG=Cool Granite Gray

Insulation Schedule (Install in same direction as Covering)
 Id Qty Type Start Run Last Run Thick. Facing Increment
 BLK1 9 IB 23'-6" 25'-6" 6.00 PS 2 7/8"
 Starter Width= 6'-0", Interm. Width= 6'-0", End Width= 6'-0"
 Location =Outside Secondary Structural
 Direction =Across Secondary Structural
 Type:IB=Fiberglass Blanket
 Facing:PS=Polypropylene Scrim Kraft, Standard Duty
 Shape Name = Pack Edge, Wall = 1

Trim Schedule
 Id Parts
 T1 (2)EF20A,EF12A,(5)RFR10,(4.9)GAGLN001
 T2 (2.2)TRMX02
 T3 DFT10,JT07
 T4 DFT05,HTS05
 T5 (1.8)BA125
 T6 (2.4)TRMX03

Color
 Cool Imperial Blue
 Match Wall Color
 Cool Granite Gray WC24A1
 Cool Granite Gray WC24A2
 Match Wall Color EN52A1,RC00A1,WC01D9,WC04G1
 Match Wall Color



1 3'-4 1/2"
 Dimension Key

COVERING ELEVATION AT 2

Fastener Schedule
 Part Description
 0097597-112 (T-2) #17/#12-14 x 1 7/8" Stand-Off, 5/16" Hex Hd, SS Cap w/Washer
 0097585-112 (T-2) #12-14 x 1 1/2", 5/16" Hex Hd, SS Cap w/Washer
 0097581-112 (T-1) 1/4-14 x 7/8", 5/16" Hex Hd, SS Cap w/Washer

Shape Name = Pack Edge, Wall = 1

1. PRE-DRILLING 1/8 DIAMETER HOLES FOR STRUCTURAL FASTENERS MAY BE REQUIRED FOR HEAVY GAGE NESTED ZEE'S AND/OR FASTENERS TO STRUCTURAL BEAMS
 2. STEEL PANELS ARE AN INTEGRAL PART OF THE STRUCTURAL SYSTEM. REMOVAL OR ALTERATION WITHOUT PRIOR AUTHORIZATION IS PROHIBITED.
 3. PANELS SHOWN WITH A LENGTH LESS THAN 6 FT MAY HAVE TO BE FIELD CUT.
 4. SEE JOB DETAILS FOR COVERING AND TRIM FASTENER SPECIFICATION.

THE VP ENGINEER'S SEAL APPLIES ONLY TO THE WORK PRODUCT OF VP AND DESIGN AND PERFORMANCE REQUIREMENTS SPECIFIED BY VP. THE VP ENGINEER'S SEAL DOES NOT APPLY TO THE PERFORMANCE OR DESIGN OF ANY OTHER PRODUCT OR COMPONENT FURNISHED BY VP EXCEPT TO ANY DESIGN OR PERFORMANCE REQUIREMENTS SPECIFIED BY VP.

THIS DRAWING, INCLUDING THE INFORMATION HEREON, REMAINS THE PROPERTY OF VP BUILDINGS. IT IS PROVIDED SOLELY FOR ERECTING THE BUILDING DESCRIBED IN THE APPLICABLE PURCHASE ORDER AND SHALL NOT BE MODIFIED, REPRODUCED OR USED FOR ANY OTHER PURPOSE WITHOUT PRIOR WRITTEN APPROVAL OF VP BUILDINGS.

THE GENERAL CONTRACTOR AND/OR ERECTOR IS SOLELY RESPONSIBLE FOR ACCURATE GOOD QUALITY WORKMANSHIP IN ERECTING THIS BUILDING IN ACCORDANCE WITH THIS DRAWING, DETAILS REFERENCED IN THIS DRAWING, ALL APPLICABLE VP BUILDINGS ERECTION GUIDES, AND INDUSTRY STANDARDS PERTAINING TO PROPER ERECTION, INCLUDING THE CORRECT USE OF TEMPORARY BRACING.

VP Buildings			
3200 Players Club Circle Memphis TN 38125			
REV	DATE	BY	DESCRIPTION
NTS			

COVERING ELEVATION AT 2	
BUILDER	Patco
CUSTOMER	
LOCATION	Portland, Maine
PROJECT	Pack Edge
BUILDERS POW	
VP BUILDINGS	VARCO PRUDEN
A BlueScope Steel Company	VPC VERSION: 2012.3d
JOB #	12-4084
DATE	3/14/2013
DRAWN/CHECK	COOP DC
PAGE	16