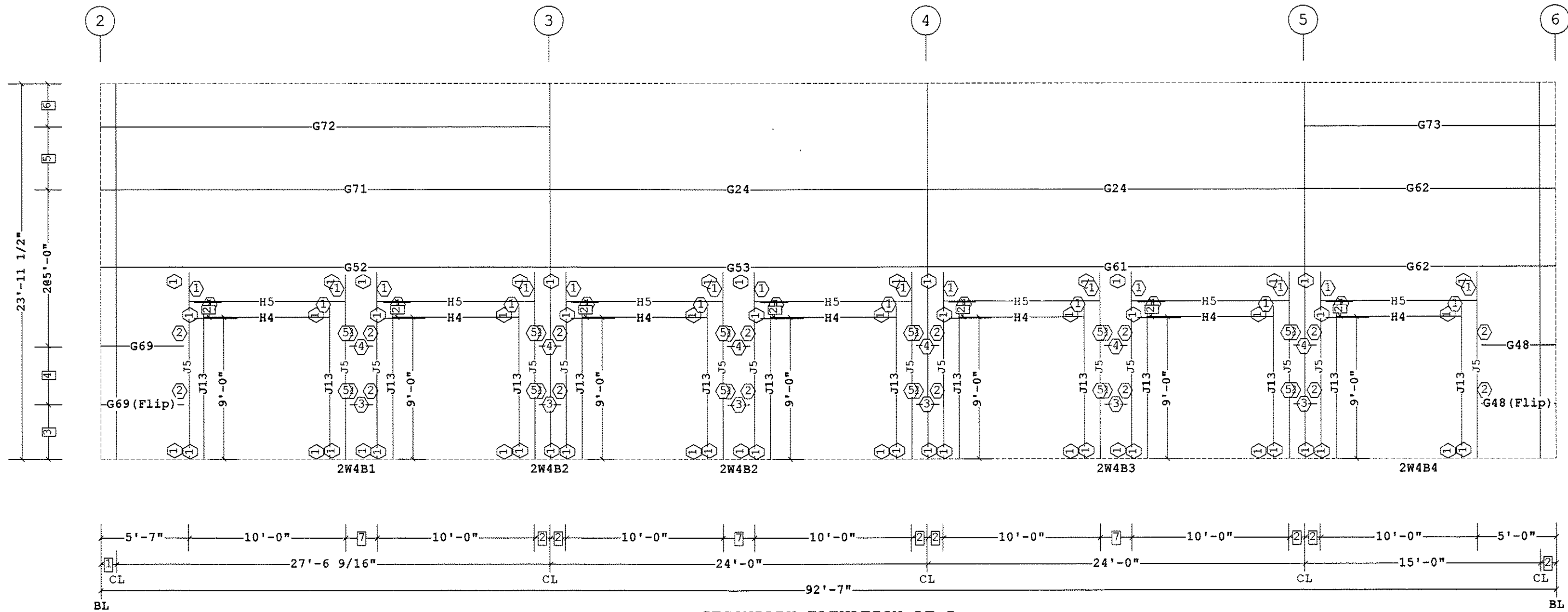


Secondary Part Schedule

Mark	Part	Thick.	Depth	Lap	Detail
G24	08Z29114174400	0.0600	8 1/2"	2'-10 1/2"	WS01G3
G46	JCP051170	0.0600	8 1/2"		WS20F2
G48	08C0408417AG00	0.0600	8 1/2"		WS20F2
G52	00208ZS320641100	0.1130	8 1/2"	3'-10 1/2"	WS01G3
G53	08Z29114134400	0.0880	8 1/2"	2'-10 1/2"	WS01G3
G61	08Z29114154400	0.0730	8 1/2"	2'-10 1/2"	WS01G3
G62	08Z1705417A200	0.0600	8 1/2"	1'-4 1/2"	WS01G3
G69	00408CS050341700	0.0600	8 1/2"		WS20F2
G71	00308ZS320641600	0.0680	8 1/2"	3'-10 1/2"	WS01G3
G72	00408ZS280641300	0.0880	8 1/2"		WS01G2
G73	08Z1511417AD00	0.0600	8 1/2"		WS01G2
H4	00408JS0800017	0.0600	8 1/2"		WS20F9
H5	00508JS1000017	0.0600	8 1/2"		WS20F9
J13	00308JS0908217	0.0600	8 1/2"		WS20F9, WS20F2, WS20B2, WS20B8
J5	00208JS1110617	0.0600	8 1/2"		WS20F9, WS20F2, WS20B2, WS20B8

Part Mark Key

- 1 PG1
- 2 JTG1
- 3 G46(Flip)
- 4 G46
- 5 GFA206



SECONDARY ELEVATION AT D

- 7 2'-0"
- 6 2'-9"
- 5 4'-0"
- 4 3'-8 1/2"
- 3 3'-6"
- 2 1'-0"
- 1 1'-0 7/16"

Dimension Key

Shape Name = Pack Edge, Wall = 4

1. UNLESS NOTED, USE 1/2 X 1 1/2 A-325 SNUG TIGHTENED BOLTS FOR ALL SECONDARY CONNECTIONS.  
 2. FLANGE BRACES ARE AN INTEGRAL PART OF THE STABILITY OF THE STRUCTURAL SYSTEM AND MUST BE PROPERLY INSTALLED PRIOR TO ERECTION OF WALL AND ROOF SHEETS.  
 3. REMOVAL OR ALTERATION OF ANY COMPONENT IS PROHIBITED.


THE VP ENGINEER'S SEAL APPLIES ONLY TO THE WORK PRODUCT OF VP AND DESIGN AND PERFORMANCE REQUIREMENTS SPECIFIED BY VP. THE VP ENGINEER'S SEAL DOES NOT APPLY TO THE PERFORMANCE OR DESIGN OF ANY OTHER PRODUCT OR COMPONENT FURNISHED BY VP EXCEPT TO ANY DESIGN OR PERFORMANCE REQUIREMENTS SPECIFIED BY VP.

THIS DRAWING, INCLUDING THE INFORMATION HEREON, REMAINS THE PROPERTY OF VP BUILDINGS. IT IS PROVIDED SOLELY FOR ERECTING THE BUILDING DESCRIBED IN THE APPLICABLE PURCHASE ORDER AND SHALL NOT BE MODIFIED, REPRODUCED OR USED FOR ANY OTHER PURPOSE WITHOUT PRIOR WRITTEN APPROVAL OF VP BUILDINGS.

THE GENERAL CONTRACTOR AND/OR ERECTOR IS SOLELY RESPONSIBLE FOR ACCURATE GOOD QUALITY WORKMANSHIP IN ERECTING THIS BUILDING IN ACCORDANCE WITH THIS DRAWING, DETAILS REFERENCED IN THIS DRAWING, ALL APPLICABLE VP BUILDINGS ERECTION GUIDES, AND INDUSTRY STANDARDS PERTAINING TO PROPER ERECTION, INCLUDING THE CORRECT USE OF TEMPORARY BRACING.

VP Buildings			
3200 Players Club Circle Memphis TN 38125			
REV	DATE	BY	DESCRIPTION
NTS			

SECONDARY ELEVATION AT D

BUILDER	Patco	JOB #	12-4084
CUSTOMER		DATE	3/14/2013
LOCATION	Portland, Maine	DRAWN/CHECK	COOP DC
PROJECT	Pack Edge	PAGE	14
BUILDERS PC#			
A BlueScope Steel Company VPC VERSION: 2012.3d		a division of BlueScope Buildings North America, Inc.	