

Secondary Part Schedule

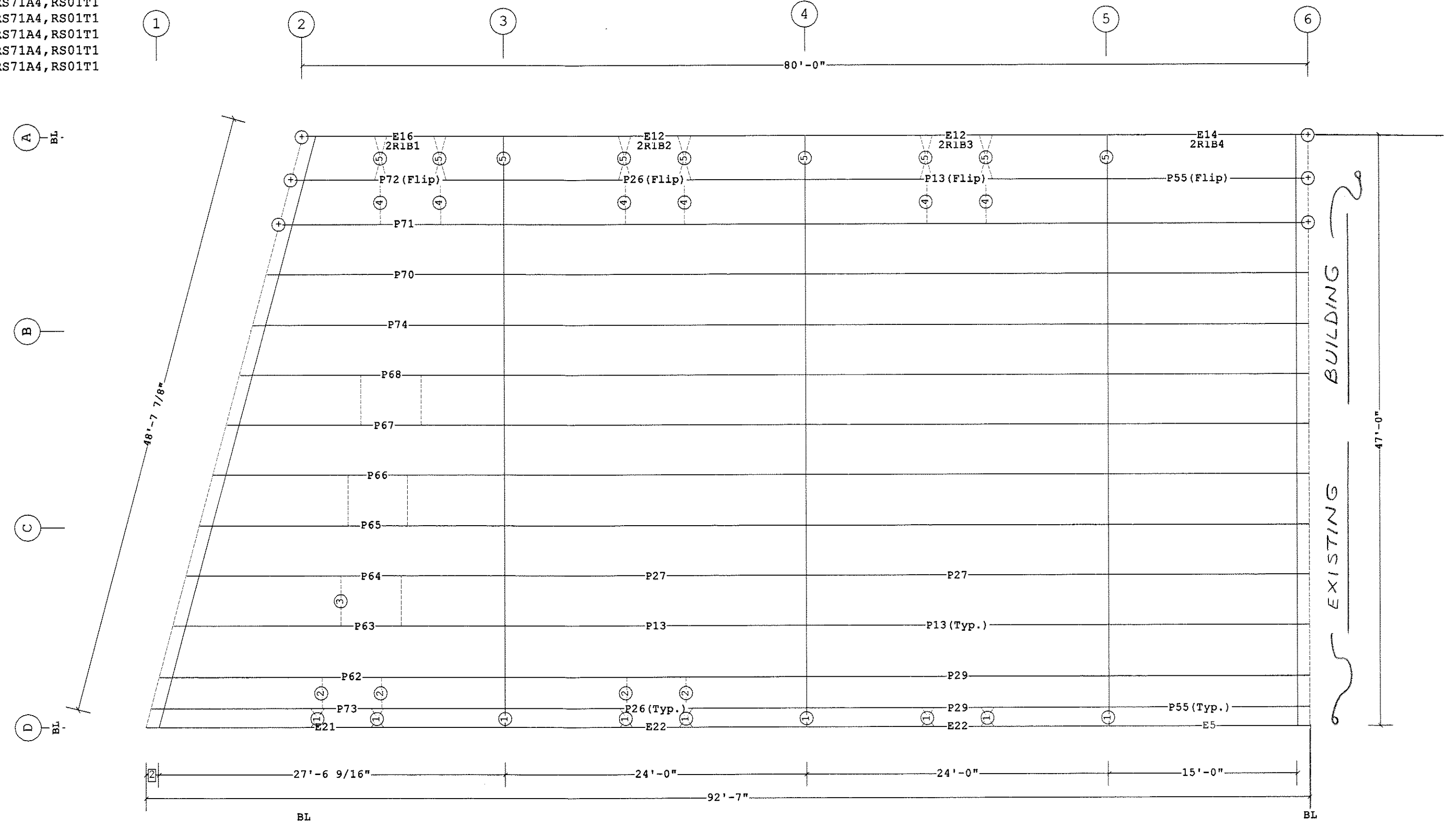
Mark	Part	Thick.	Depth	Lap	Detail
E12	08E2311414DDB00	0.0790	8 1/2"		RS12PE
E14	08E1511414ADA00	0.0790	8 1/2"		RS12PH, RS12PA
E16	00108ES1510714A00	0.0790	8 1/2"		RS12PE
E21	00107HS2806615B00	0.0730	7"		BR09W2, BR09Y2
E22	07H2311415DDB00	0.0730	7"		BR09W2, BR09Y2
E5	07H1511415ADA00	0.0730	7"		BR09W2, BR09Y2
P13	08Z291141444B0	0.0790	8 1/2"	2'-10 1/2"	RS01T1
P26	08Z291141344B0	0.0880	8 1/2"	2'-10 1/2"	RS01T1
P27	08Z291141544B0	0.0730	8 1/2"	2'-10 1/2"	RS01T1
P29	08Z291141644B0	0.0680	8 1/2"	2'-10 1/2"	RS01T1
P55	08Z1705417A2A0	0.0600	8 1/2"	1'-4 1/2"	RS02T1, RS01T1
P62	00608ZS3004711B0	0.1130	8 1/2"	2'-10 1/2"	RS71A4, RS01T1
P63	00708ZS3004111B0	0.1130	8 1/2"	3'-10 1/2"	RS71A4, RS01T1
P64	00808ZS2903212B0	0.0980	8 1/2"	3'-10 1/2"	RS71A4, RS01T1
P65	00908ZS2702311B0	0.1130	8 1/2"	2'-10 1/2"	RS71A4, RS01T1
P66	01008ZS2601413B0	0.0880	8 1/2"	2'-10 1/2"	RS71A4, RS01T1
P67	01108ZS2500613B0	0.0880	8 1/2"	2'-10 1/2"	RS71A4, RS01T1
P68	01208ZS2311713B0	0.0880	8 1/2"	2'-10 1/2"	RS71A4, RS01T1
P70	01408ZS2110115A0	0.0730	8 1/2"	2'-10 1/2"	RS71A4, RS01T1
P71	01508ZS1909316A0	0.0680	8 1/2"	1'-10 1/2"	RS71A4, RS01T1
P72	01608ZS1810017A0	0.0600	8 1/2"	1'-10 1/2"	RS71A4, RS01T1
P73	00508ZS3100711B0	0.1130	8 1/2"	2'-10 1/2"	RS71A4, RS01T1
P74	01308ZS2211011A0	0.1130	8 1/2"	2'-10 1/2"	RS71A4, RS01T1

Purlin Brace Schedule

Id	Qty	Mark No	Spacing
1	15	PBA0109	1'-6"
2	4	CPBB020708	2'-6"
3	6	CPBB040108 (Typ.)	4'-0"
4	6	CPBA030514	3'-6 1/4"
5	15	PBA0310	3'-6 1/4"

See SED:
BR09K5, BR09JG, BR09RY, BR09RZ, BR09JR
BR09K2

Part Mark Key
(+) SSR Fixed Clip Location



ROOF SECONDARY PLAN FOR Pack Edge

2 1'-0 7/16"
1 1'-0"
Dimension Key

Shape Name = Pack Edge

1. UNLESS NOTED, USE 1/2 X 1 1/2 A-325 SNUG TIGHTENED BOLTS FOR ALL SECONDARY CONNECTIONS.
2. FLANGE BRACES ARE AN INTEGRAL PART OF THE STABILITY OF THE STRUCTURAL SYSTEM AND MUST BE PROPERLY INSTALLED PRIOR TO ERECTION OF WALL AND ROOF SHEETS.
3. REMOVAL OR ALTERATION OF ANY COMPONENT IS PROHIBITED.

THE VP ENGINEER'S SEAL APPLIES ONLY TO THE WORK PRODUCT OF VP AND DESIGN AND PERFORMANCE REQUIREMENTS SPECIFIED BY VP. THE VP ENGINEER'S SEAL DOES NOT APPLY TO THE PERFORMANCE OR DESIGN OF ANY OTHER PRODUCT OR COMPONENT FURNISHED BY VP EXCEPT TO ANY DESIGN OR PERFORMANCE REQUIREMENTS SPECIFIED BY VP.

THIS DRAWING, INCLUDING THE INFORMATION HEREON, REMAINS THE PROPERTY OF VP BUILDINGS. IT IS PROVIDED SOLELY FOR ERECTING THE BUILDING DESCRIBED IN THE APPLICABLE PURCHASE ORDER AND SHALL NOT BE MODIFIED, REPRODUCED OR USED FOR ANY OTHER PURPOSE WITHOUT PRIOR WRITTEN APPROVAL OF VP BUILDINGS.

THE GENERAL CONTRACTOR AND/OR ERECTOR IS SOLELY RESPONSIBLE FOR ACCURATE GOOD QUALITY WORKMANSHIP IN ERECTING THIS BUILDING IN ACCORDANCE WITH THIS DRAWING, DETAILS REFERENCED IN THIS DRAWING, ALL APPLICABLE VP BUILDINGS ERECTION GUIDES, AND INDUSTRY STANDARDS PERTAINING TO PROPER ERECTION, INCLUDING THE CORRECT USE OF TEMPORARY BRACING.

VP Buildings			
3200 Players Club Circle Memphis TN 38125			
REV	DATE	BY	DESCRIPTION
NTS			

ROOF SECONDARY PLAN FOR Pack Edge			
BUILDER	Patco		
CUSTOMER			
LOCATION	Portland, Maine		
PROJECT	Pack Edge		
BUILDERS POW			
JOB #	12-4084		
DATE	3/14/2013		
DRAWN/CHECK	COOP DC		
PAGE	11		

