

PACK EDGE WAREHOUSE ADDITION

340 PRESUMPCOT STREET
PORTLAND, MAINE

APPLICANT:

PACK EDGE, INC.
340 PRESUMPCOT STREET
PORTLAND, MAINE 04103

OWNER:

J & H PROPERTIES, LLC
88 WINDING WAY
PORTLAND, MAINE 04102

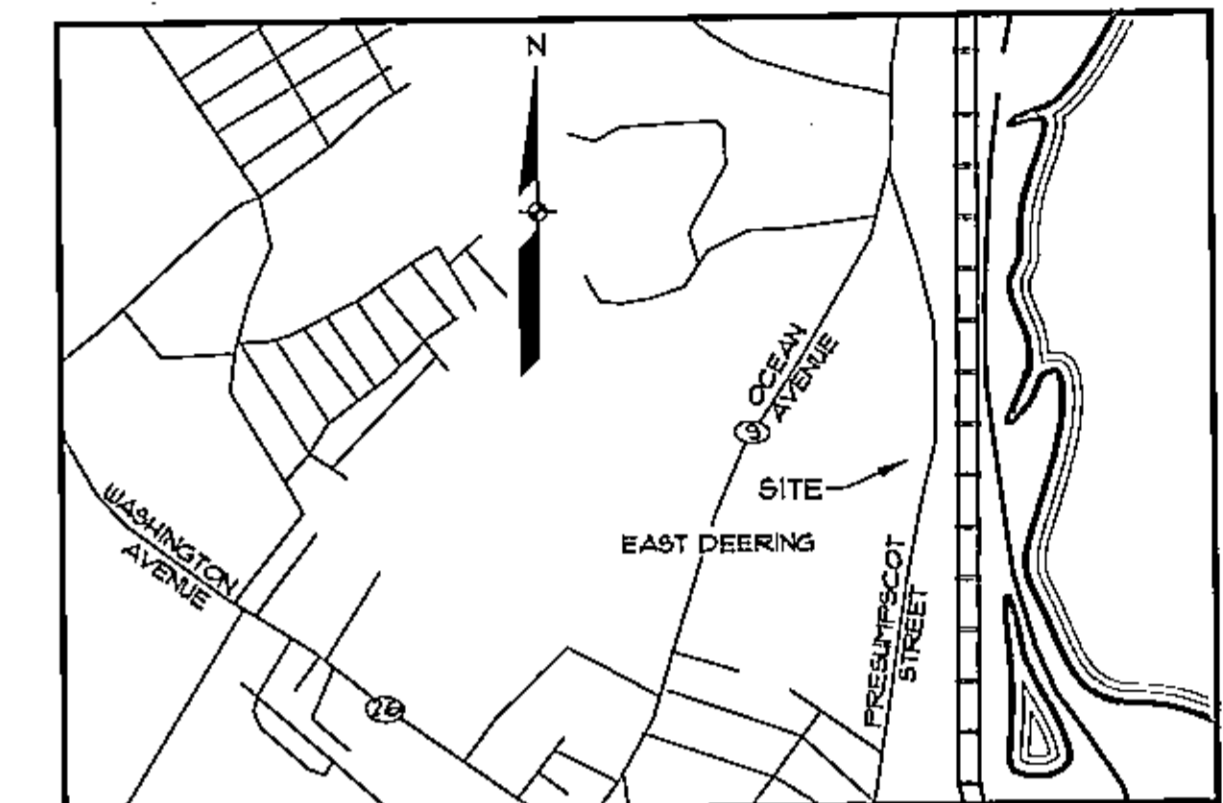
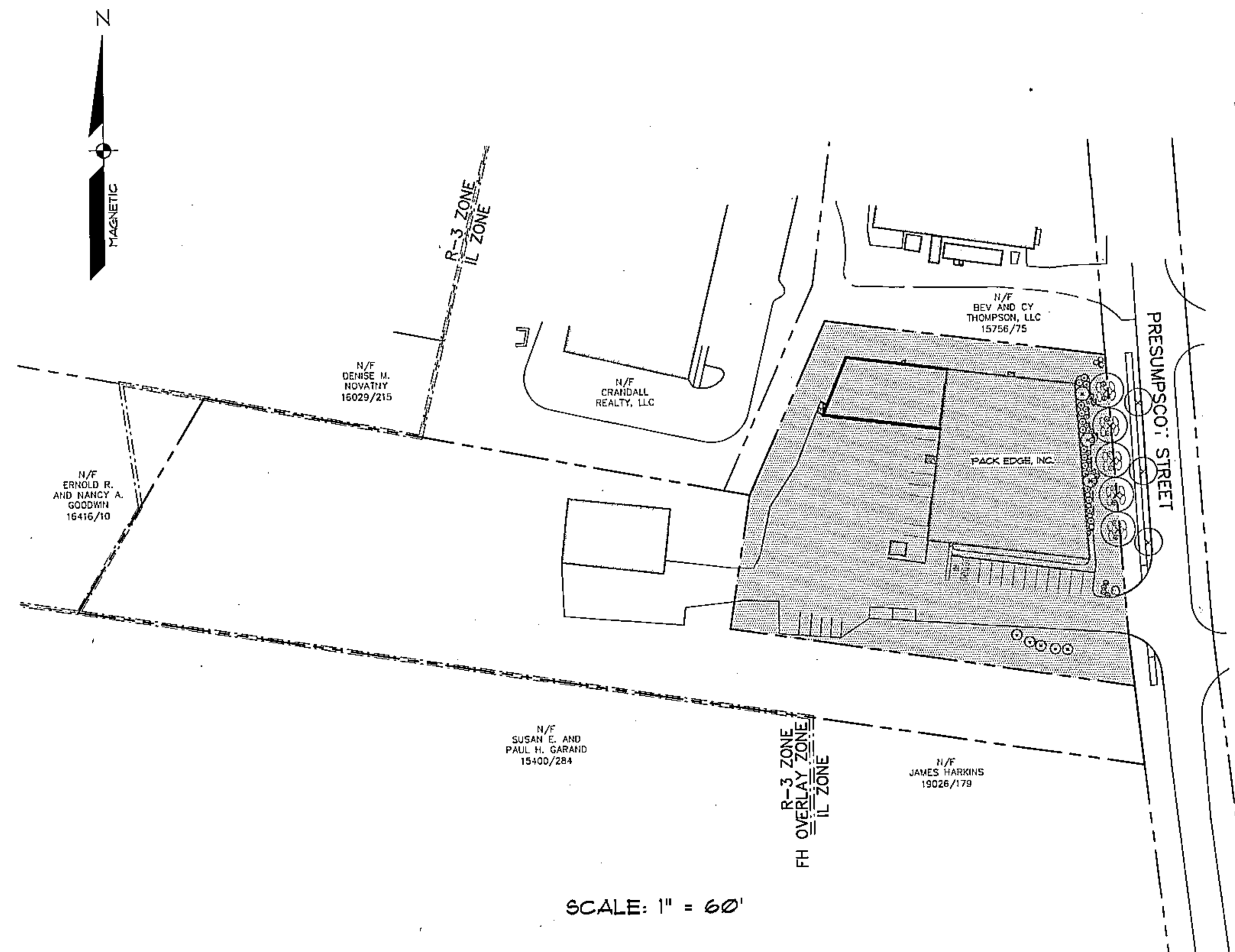
GENERAL CONTRACTOR:

PATCO CONSTRUCTION, INC.
1293 MAIN STREET
SANFORD, MAINE 04073

ENGINEER / SURVEYOR:

SEBAGO
TECHNICS

WWW.SEBAGOTECHNICS.COM
75 John Roberts Rd. - Suite 1A - South Portland, ME 04106
250 Goddard Rd. - Suite B - Lewiston, ME 04240
Tel. 207-200-2100 Tel. 207-783-6666



LOCATION MAP

N.T.S.

SHEET INDEX:

SHEET	DESCRIPTION
1	COVER SHEET
2	EXISTING CONDITIONS PLAN
3	SITE PLAN
4	GRADING AND UTILITY PLAN
5	DETAILS
6	DETAILS

REV.	BY:	DATE:	STATUS:
B	SMF	04-16-13	REVISED PER STAFF COMMENTS & RESUBMIT
A	SMF	04-01-13	SITE PLAN SUBMISSION TO CITY

THIS PLAN SHALL NOT BE MODIFIED WITHOUT WRITTEN PERMISSION FROM SEBAGO TECHNICS, INC. ANY ALTERATIONS, AUTHORIZED OR OTHERWISE, SHALL BE AT THE USER'S SOLE RISK AND WITHOUT LIABILITY TO SEBAGO TECHNICS, INC.

02370.dwg, TAB: 02370