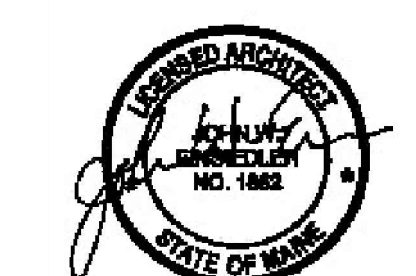


**PATCO**  
CONSTRUCTION INC

1293 MAIN STREET  
SANFORD, ME 04073  
TEL: (207)324-5574  
FAX: (207)324-1643  
www.patco.com  
or www.patcocommercial.com

**John W. Einsiedler, R.A.**  
Architecture  
148 Sea Road Kennebunk, Maine 04043  
Phone: 207-985-7900 Facsimile: 207-985-8818  
www.jweinsiedler.com www.jweinsiedler.com  
Architecture • Interior Design • Universal Design



REV.	DESCRIPTION	DATE	BY

PROPOSED BUILDING FOR:  
**PACK EDGE**  
352 PRESUMPCOTT STREET  
PORTLAND, ME  
**LIFE SAFETY PLAN**

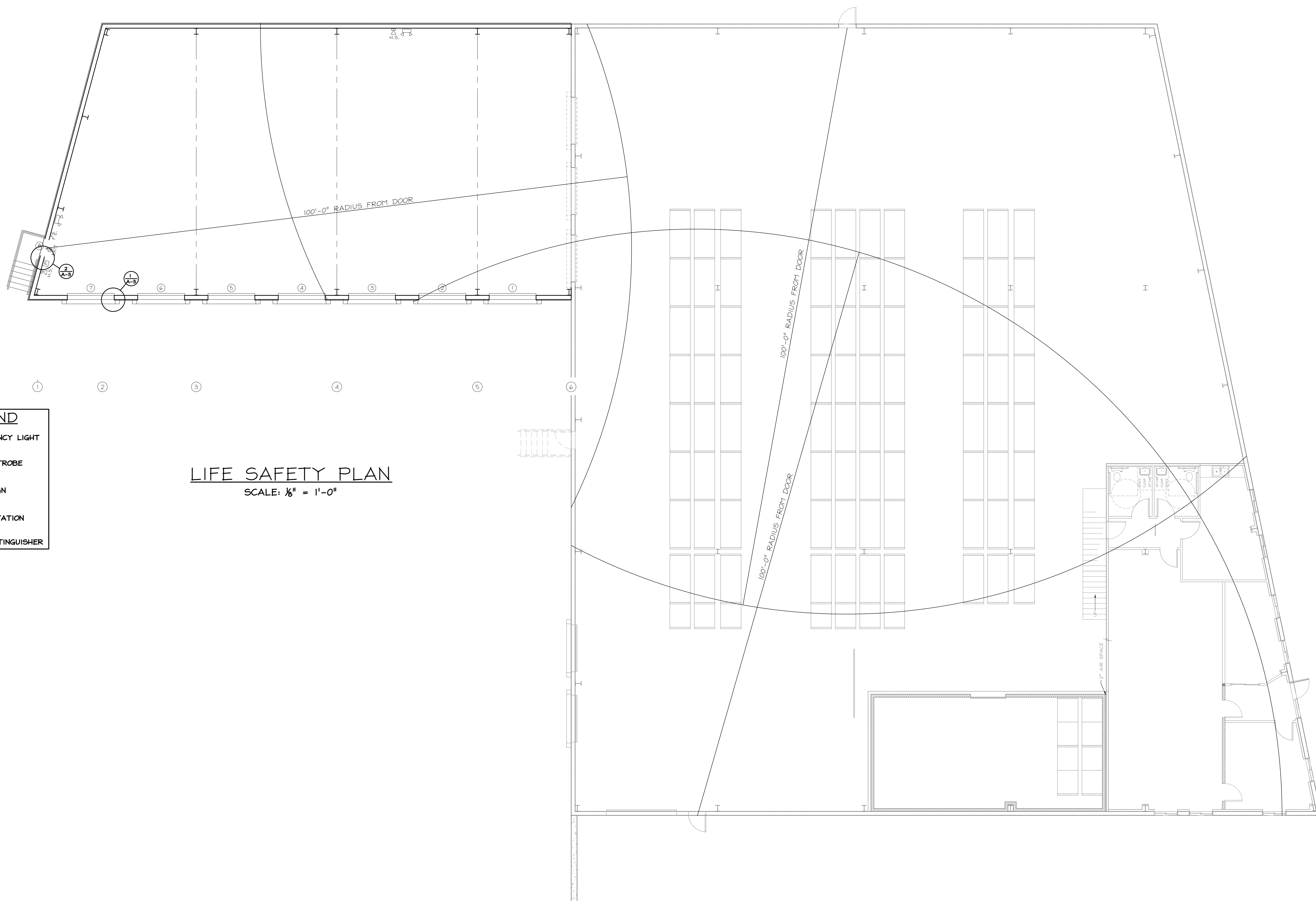
DATE: 4-1-13  
SCALE: AS SHOWN  
DRAWN BY: RMA/JDB  
CHECKED BY:  
JOB NUMBER:  
SHEET:

A-6

← ADDITION BUILDING  
EXISTING BUILDING →

1 2 3 4 5 6

A  
B  
C  
D



**LEGEND**

	EMERGENCY LIGHT
	HORN/STROBE
	EXIT SIGN
	PULL STATION
	FIRE EXTINGUISHER

**LIFE SAFETY PLAN**  
SCALE: 1/8" = 1'-0"